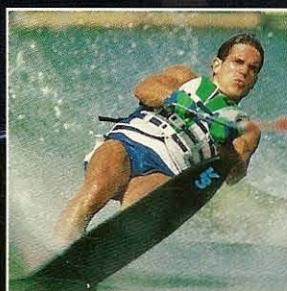
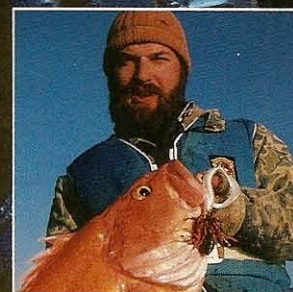


1988 MICHIGAN WHEEL OUTBOARD  
AND STERN DRIVE CATALOG



**WE MAKE  
YOUR PROP!**





# WHATEVER THE BOAT, WHATEVER THE ENGINE, WHATEVER THE SPEED, MICHIGAN WHEEL MAKES THE PROP THAT FITS THE NEED.

For waterskiing...for fishing...for cruising...Michigan Wheel has a prop that matches your specific performance needs. Because nobody makes more kinds of props for more kinds of boats than us. And every Michigan Wheel prop meets—and often exceeds—original equipment standards.

With over 80 years of experience, Michigan Wheel is universally recognized as the leading manufacturer of propellers.

## MICHIGAN WHEEL PROPS ARE CUSTOM-CRAFTED FOR THESE ENGINES:

Outboard	Page
<input type="checkbox"/> Aero	8
<input type="checkbox"/> Archimedes	13
<input type="checkbox"/> Chrysler	5
<input type="checkbox"/> Elgin	12
<input type="checkbox"/> Eska	12
<input type="checkbox"/> Evinrude	6
<input type="checkbox"/> Force	5
<input type="checkbox"/> Honda	11
<input type="checkbox"/> Johnson	6
<input type="checkbox"/> Mariner	9
<input type="checkbox"/> McCulloch	8
<input type="checkbox"/> Mercury	10
<input type="checkbox"/> Nissan	8
<input type="checkbox"/> Scott	8

Outboard (Continued)	Page
<input type="checkbox"/> Sears	12
<input type="checkbox"/> Spirit	12
<input type="checkbox"/> Suzuki	12
<input type="checkbox"/> Tohatsu	8
<input type="checkbox"/> U.S. Marine	5
<input type="checkbox"/> Volvo-Penta	13
<input type="checkbox"/> Ward's Sea King	13
<input type="checkbox"/> Yamaha	13

Stern Drive	Page
<input type="checkbox"/> BMW	17
<input type="checkbox"/> Chrysler	17
<input type="checkbox"/> Eaton	19
<input type="checkbox"/> Enfield	19
<input type="checkbox"/> Marine Drive Systems	17
<input type="checkbox"/> Mercruiser Stern Drive	18
<input type="checkbox"/> Mercury Mercruiser	18
<input type="checkbox"/> Muncie	19
<input type="checkbox"/> Muncie Turbomarine	17
<input type="checkbox"/> OMC Cobra	15
<input type="checkbox"/> OMC Sea Drive	16
<input type="checkbox"/> OMC Saildrive	17
<input type="checkbox"/> Outboard Marine	19
<input type="checkbox"/> Perkins Z	19
<input type="checkbox"/> Volvo-Penta	19
<input type="checkbox"/> Miscellaneous	15

If you are replacing a prop and don't find the part number listed in this catalog, your Michigan Wheel dealer can help. Ask him to consult the Michigan Wheel Index of Outboard and Stern Drive Propellers (available on page 4).

From this index (which provides part numbers for every Michigan Wheel prop produced since we began in 1903), your dealer can provide the specs you need.

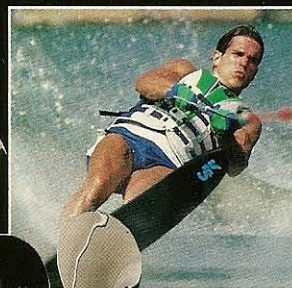
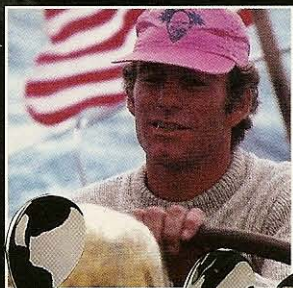
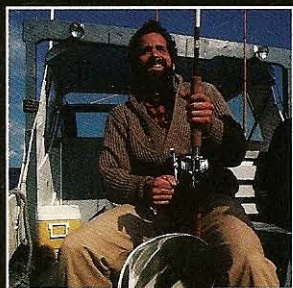
## OUR EXCLUSIVE, HIGH-STRENGTH ALLOYS MEAN LONGER PROP LIFE.

	Michigan Wheel Exclusive Alloys
MICHIGAN Aluminum props	MICHALLUM®
MICHIGAN Stainless steel props	MICHALLOY-S™
MICHIGAN Bronze props	MICHALLOY-K®

*The specially-formulated alloys contained in each Michigan Wheel prop mean superior resistance against damage.*

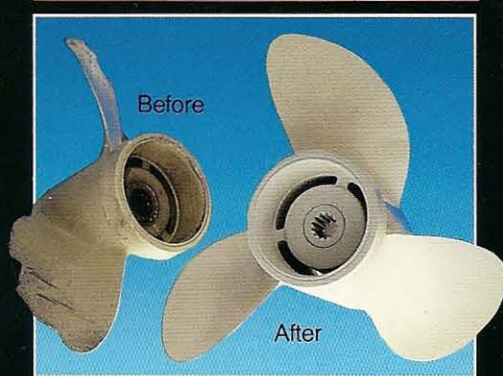
The quality of any product can be no better than the quality of the materials put into it. While others skimp by using lower-grade metal alloys, our expert metallurgists use only the finest-grade virgin alloys. They will settle for nothing less. This is why Michigan Wheel aluminum props are *stronger* than even original equipment props. And the magnified photos shown here prove it.

The first photo shows the metal used in a Michigan Wheel aluminum prop. The



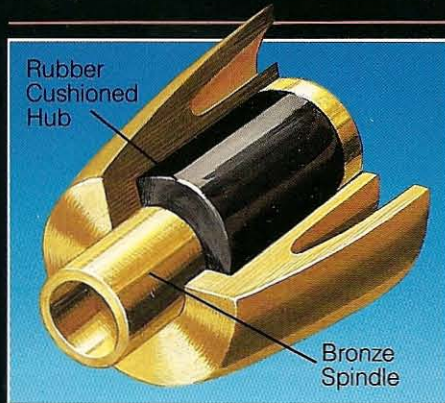


second photo shows the metal used in a typical aluminum prop. See how the metal in the typical prop has larger grains and a looser fit? Now, note the tighter grain structure of the metal in the Michigan Wheel photo. Because of this tighter fit, the Michigan Wheel prop is stronger; it has a tensile strength almost twice that of the competitive prop.



*Our exclusive alloys make Michigan Wheel props easier to repair—saving you money. A Michigan Wheel prop can be repaired at approximately 1/2 to 1/3 the cost of a new propeller.*

Another source of strength on every Michigan Wheel prop is our cushioned hubs. Most modern gearshift motors are subject to shock when shifting. To protect them, a built-in shock-absorbing cushion is built into the hub of the propeller to help prevent breakage. With a Michigan propeller, you get the strongest cushion hubs in the industry.



*Michigan Wheel's cushioned hub includes a special bronze spindle for superior strength.*

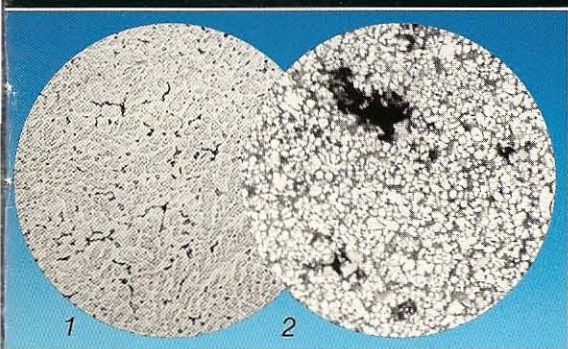
At Michigan Wheel we understand the beating your props take. That's why we make Michigan Wheel props this tough. The whole idea is to give you more time for boating fun.

## SELECTING THE RIGHT PROP.

The prop that came with your new engine isn't necessarily the one that's best suited for your needs. This is because many original equipment props, understandably, must meet a range of average conditions for many kinds of boats, hull styles and loads. This can limit their performance.



Your Michigan Wheel dealer is well qualified to assist you in finding the best prop for your boat. He is backed by a team of distributor experts who draw upon the largest body of propeller knowledge and research in the world, all with a single goal in mind—to provide you with the Michigan Wheel propeller that will give you the greatest enjoyment on the water.

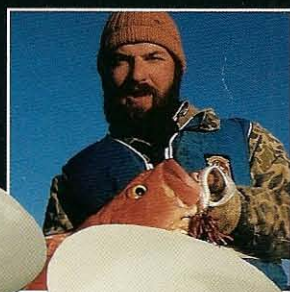


1. Michigan Wheel Michallum® aluminum prop. Tensile strength: 40,000 lbs. psi—results in longer prop life.

2. Typical aluminum prop. Tensile strength: 22,000 lbs. psi—highly susceptible to damage.

Sure, our high-strength alloys cost us a little more. But they give Michigan Wheel customers a lot more benefits than ordinary props. Just look at the chart below.

MICHALLUM® Aluminum Prop	Ordinary Aluminum Prop
Less brittle	More brittle
Blades flex under impact	Blades tend to break and tear under impact
Easy to repair	Difficult to repair
• Easy to weld	• Difficult to weld
• Easy to change pitch	• Breaks easily in straightening process





# WE SERVICE WHAT EVERYBODY ELSE SELLS.

When something happens to your original equipment propeller, you take it to your boat dealer. Regardless of manufacturer, what most dealers do is rely upon the international network of authorized Michigan Wheel service stations. There are over 70 such stations throughout the United States, Canada and overseas. So even your original equipment propeller will probably be repaired by Michigan Wheel.



Our exclusive *Machined Pitch™* process allows Michigan Wheel to repair your prop to pinpoint accuracy.

Authorized Michigan Wheel service stations are operated by highly skilled and factory trained workers. Welding is handled by certified welders. But most importantly to Michigan propeller owners is the added fact that their propellers are indexed, which means that each repair station with their same matching pitch blocks can custom repair your Michigan propeller to its original specifications. This also applies to the repair and replacement of cushioned-hub propellers for gearshift engines.



Michigan Wheel motor brackets feature strong, sand cast aluminum brackets; skegs help lower engine repair costs.

## FACTORY REPAIR

Repair prices effective August 1, 1987.

### OUTBOARD/STERN DRIVE Suggested factory list prices.

Diameter	Price	Cupped
6" -11"	\$19.00	\$25.00
11¼" -13¼"	25.00	31.00
13½" -15¾"	34.00	42.00
16" -19"	45.00	56.00
19¼" & larger	49.00	61.00
Cupping thru 14"	9.00 Net	
Cupping 14¼" & larger	13.00 Net	
Cupped & Ni-Bral add 25%		
Dia. reduction thru 13" dia.	16.00 Net	
Dia. reduction 13¼" & larger	29.00 Net	
Blade thinning	18.00 Net	
Hub replacement only:		
thru 49 h.p.	25.00 Net	
50-95 h.p.	31.00 Net	
100 h.p. & over	38.00 Net	
Hub replacement in addition to prop repair:		
thru 25 h.p.	13.00 Net	
26-49 h.p.	25.00 Net	
50-95 h.p.	27.00 Net	
100 h.p. & over	31.00 Net	
(Stainless Steel 100% extra)		

### INBOARD Suggested factory list prices.

Dia.	Price	Dia.	Price	Dia.	Price	Dia.	Price
10"	\$31.00	14"	\$45.00	18"	\$ 72.00	24"	\$132.00
11"	34.00	15"	51.00	19"	86.00	26"	156.00
12"	35.00	16"	59.00	20"	96.00	28"	162.00
13"	38.00	17"	65.00	22"	114.00	29" & up per quote	

(2-3 blade Manganese bronze) (Ni-Bral, cupped, 4 blades—25% extra. Stainless Steel—100% extra) (above 28" on quotation) All welding net extra—time and material basis. Pitch change—new or undamaged at repair price. Pitch alterations must be accomplished at the owner's risk and knowledge that breakage can occur.

**ALL REPAIRS PERFORMED AT OWNER'S RISK.**

## ACCESSORIES

**No. 530 SLIDING MOTOR BRACKET.** For standard transoms. For trolling or auxiliary motors on high transom boats. Bracket width 11". Natural mahogany finish, with sand-cast aluminum brackets.

	Price	Numeric
#530 (motors to 25 h.p.) 18" rails	\$141.00	301003
#530A (motors to 25 h.p.) 24" rails	\$153.00	301004

**No. 525 & 527 MOTOR BRACKET.** Permanent mount for auxiliary or trolling motors. Natural hard maple finish, sand-cast aluminum brackets.

#525 (motors to 10 h.p.) 8½" width	\$ 63.00	301001
#527 (motors to 25 h.p.) 11" width	\$ 90.00	301002

### REPLACEMENT ALUMINUM SKEGS (OUTBOARD/STERN DRIVE)

Evinrude-Johnson-OMC	Part No.	Price	Numeric
50 h.p. (2 Cyl.)	SKO76	\$19.00	300001
V-4 Outboard Model 400 Stern drive	SKO77	16.00	300002
V-6 Outboard Model 800 Stern drive	SKO78	19.00	300003
<b>Mercury-Mercruiser</b>			
In line 6 Cyl.—Outboards	SKO83	19.00	300004
V-6 Outboard & Mercruiser (1983)	SKO84	19.00	300005
Mercruiser I (Thru 82)	SKO85	19.00	300006

**MICHIGAN WHEEL OUTBOARD AND STERN DRIVE INDEX.** This two-document set lists every prop Michigan Wheel has produced and the corresponding specs. The first uses an alpha numeric index; the second uses the new, numeric index. Cost: \$6/set.



Motor & Model	Year	Boat Size & Recommendation	Blks.	Dia. & Pitch	ALUMINUM				STAINLESS STEEL			
					Nearest US Marine Equiv.	Michigan Part No.	Price	Numeric	Nearest US Marine Equiv.	Michigan Part No.	Price	Numeric
3.5-3.6 HP	69-76	Standard Replacement	2	7 1/2 x 4 1/2	P-19	G20	\$ 30.00	072017				
3.5 HP	68-80	Standard Replacement	2	7 x 4 3/4	P-317	PC4	40.00	072020				
4,4.4,5,6,6.6, 7,7.5,8 HP Splined Shaft		Standard Replacement	2	7 1/2 x 6 1/4	P-318	PC6	40.00	072021				
5 HP	75-77	Standard Replacement	2	8 x 5	P-409(P-75)	PC9	40.00	072022				
5 1/2-6 HP	56-59	Standard Replacement	2	7 1/2 x 5 1/2		G30	30.00	152014				
6 HP	64-67	Standard Replacement	2	7 1/2 x 7		GC54	40.00	072018				
6-10 HP Sailor Sailor 180-250	76-78 79 Thru	Sailboats	3	10 3/8 x 10	P-278	AMC308	65.00	072014				
		Sailboats	3	10 1/2 x 7	P-296	SMC46	65.00	072074				
6, 7.5, 9.2 HP	56-67	12'-14' Bts.—Light Loads	2	8 x 8		GC55	40.00	072019				
9.9 HP	68 Thru	Light Runabouts—Light Loads	2	8 x 8 3/4	P-70	PC14	40.00	072025				
10 HP	74-78	Standard Replacement	2	8 1/4 x 8 1/4	P-286	PC12	40.00	072024				
12 HP	78-79	Standard Replacement	2	8 1/4 x 8		PC10	40.00	072023				
12.9 HP	All Yrs.	14'-16' Bts.—All Loads, Skis	2	8 1/4 x 8		PC10	40.00	072023				
15 HP Splined Shaft	80 Thru	Standard Replacement	3	8 1/2 x 8 1/4	P-408	PC20	43.00	072026				
20-25 HP Splined Shaft	68-78	Standard Replacement	3	8 1/2 x 8 1/2	P-324	AMC490	59.00	152002				
		14'-16' Bts.—All Loads, Skis	3	8 1/2 x 8		PR4	61.00	072027				
		12'-14' Bts.—Light Loads	3	8 1/2 x 10	P-346	PR8	61.00	072028				
		12'-14' Bts.—Light Loads	3	8 1/2 x 11	P-461	PR10	61.00	072029				
20-25 HP	79-81	Cruisers, Houseboats, Sailboats	3	10 1/2 x 7	P-296	SMC46	65.00	072074				
40-50 HP Pin Shaft	61-65	16'-17' Bts.—All Loads, Skis	3	10 1/2 x 12	P-90	SMC715	69.00	152038				
		14'-16' Bts.—All Loads, Skis	3	10 1/2 x 13		SMC713	69.00	152037				
30 HP	66 Thru	Cruisers, Houseboats, Sailboats	3	10 3/8 x 10	P-278	AMC308	65.00	072014				
35 HP	66 Thru	17'-19' Bts.—All Loads, Skis	3	10 1/4 x 11	P-287	PR130	67.00	072035				
45 HP	66 Thru	16'-17' Bts.—All Loads, Skis	3	10 1/4 x 12	P-293	PR132	67.00	072036				
Splined Shaft		14'-16' Bts.—All Loads, Skis	3	10 1/4 x 13	P-273	PR134	67.00	072037				
55-60 HP 2-piece lower unit	66 Thru	14'-16' Bts.—Light Loads	3	10 1/4 x 14		PR136	67.00	072038				
		Light Runabouts—Light Loads	3	10 1/4 x 15	P-275	PR138	67.00	072039				
55-60 HP 1-piece lower unit	74-79	16'-17' Bts.—All Loads, Skis	3	11 3/4 x 12	P-475	PR432	79.00	072114				
		14'-16' Bts.—All Loads, Skis	3	11 1/4 x 13	P-474	PR434	79.00	072068				
55,60,65 HP Splined Shaft 1-piece lower unit	78-78 & 81 Thru	16'-17' Bts.—All Loads, Skis	3	10 x 12	PS-522(P-522)	PR552	92.00	072069				
		14'-16' Bts.—All Loads, Skis	3	10 x 13	PS-493(P-493)	PR553	92.00	072070				
		14'-16' Bts.—Light Loads	3	10 x 14	PS-494(P-494)	PR554	92.00	072071	P-496	SSC614C	\$314.00	073006
		12'-14' Bts.—Light Loads	3	10 x 15	PS-495(P-495)	PR555	92.00	072072				
80 HP 2-piece lower unit	61-65	Cruisers, Houseboats, Sailboats	3	13 x 8		PJ51	88.00	012034				
		16'-17' Bts.—All Loads, Skis	3	12 1/8 x 14	P-84	PJ50	70.00	012033				
70 HP (1.73:1)	70-79	19'-22' Bts.—All Loads	3	13 1/8 x 11	P-381	PR74	109.00	072030				
75, 85, 105 HP (1.73:1) Splined Shaft 2-piece lower unit		15'-18' Bts.—All Loads, Skis	3	13 1/8 x 13	P-391	PR76	109.00	072031				
		16'-17' Bts.—All Loads, Skis	3	13 1/8 x 15	P-389	PR78	109.00	072032				
		14'-16' Bts.—All Loads, Skis	3	13 1/8 x 17	P-372	PR80	109.00	072033	P-520	SSC117C	321.00	073001
		Light Runabouts—Light Loads	3	13 1/8 x 19	P-383	PR82	109.00	072034				
75,700 Skier (2:1) 1-piece lower unit	79-80	Cruisers, Houseboats	3	13 1/8 x 11	P-381	PR74	109.00	072030				
		17'-19' Bts.—All Loads, Skis	3	13 1/8 x 13	P-391	PR76	109.00	072031				
75 HP 2-piece lower unit	70-79	15'-18' Bts.—All Loads, Skis	3	13 1/8 x 15	P-389	PR78	109.00	072032				
105-120 HP (1.73:1) Splined Shaft 2-piece lower unit	70-77	16'-17' Bts.—All Loads, Skis	3	13 1/8 x 17	P-372	PR80	109.00	072033	P-520	SSC117C	321.00	073001
		14'-16' Bts.—All Loads, Skis	3	13 1/8 x 19	P-383	PR82	109.00	072034				
		14'-16' Bts.—Light Loads	3	13 1/8 x 21	P-489	PR884	109.00	072073				
75 HP+ 1-piece lower unit	80-84	17'-19' Bts.—All Loads, Skis	3	14 x 13	PS-501(P-501)	PR276	110.00	072054				
85 HP+ 1-piece lower unit	78 Thru	16'-17' Bts.—All Loads, Skis	3	13 3/4 x 15	PS-519(P-519)	PR278	106.00	072055				
		16'-17' Bts.—All Loads, Skis	3	13 3/4 x 15			115.00	071022		SSC315-II-C	299.00	073002
		14'-16' Bts.—All Loads, Skis	3	13 1/4 x 17	PS-623	SPC180	104.00	072107				
		14'-16' Bts.—All Loads, Skis	3	13 1/4 x 17			115.00	071023	P-539	SSC317-II-C	299.00	073003
		14'-16' Bts.—Light Loads	3	13 x 19	PS-625265	SPC182	104.00	072108				
		14'-16' Bts.—Light Loads	3	13 x 19			115.00	071024	P-540	SSC319-II-C	299.00	073004
		Hi-Performance Racing	3	13 x 21	PS-526(P-526)	SPC184	104.00	072109				
		Hi-Performance Racing	3	13 x 21			115.00	071025		SSC321-II-C	299.00	073005
90 HP (2:1) 1-piece lower unit	73-77	Cruisers, Houseboats	3	13 1/8 x 11	P-381	PR74	109.00	072030				
130-135 HP (1.73:1) 2-piece lower unit	73-77	19'-22' Bts.—All Loads	3	13 1/8 x 13	P-391	PR76	109.00	072031				
		17'-19' Bts.—All Loads, Skis	3	13 1/8 x 15	P-389	PR78	109.00	072032				
		15'-18' Bts.—All Loads, Skis	3	13 1/8 x 17	P-372	PR80	109.00	072033	P-520	SSC117C	321.00	073001
		16'-17' Bts.—All Loads, Skis	3	13 1/8 x 19	P-383	PR82	109.00	072034				
		14'-16' Bts.—All Loads, Skis	3	13 1/8 x 21	P-489	PR884	109.00	072073				
90 HP Charger 1-piece lower unit	84 Thru	19'-22' Bts.—All Loads	3	14 x 13	PS-501(P-501)	PR276	110.00	072054				
105, 120 HP	77-78	17'-19' Bts.—All Loads	3	13 3/4 x 15	PS-519(P-519)	PR278	106.00	072055				
135 HP+		17'-19' Bts.—All Loads	3	13 3/4 x 15			115.00	071022		SSC315-II-C	299.00	073002
1-piece lower unit		16'-17' Bts.—All Loads, Skis	3	13 1/4 x 17	PS-623	SPC180	104.00	072107				
100, 115 HP	78 Thru	16'-17' Bts.—All Loads, Skis	3	13 1/4 x 17			115.00	071023	P-539	SSC317-II-C	299.00	073003
140 HP+		14'-16' Bts.—All Loads, Skis	3	13 x 19	PS-625	SPC182	104.00	072108				
1-piece lower unit		14'-16' Bts.—All Loads, Skis	3	13 x 19			115.00	071024	P-540	SSC319-II-C	299.00	073004
125 HP	85 Thru	14'-16' Bts.—Light Loads	3	13 x 21	PS-626	SPC184	104.00	072109				
1-piece lower unit		14'-16' Bts.—Light Loads	3	13 x 21			115.00	071025	P-527	SSC321-II-C	299.00	073005

\*†These propellers require a spacer (normally furnished with engine) between prop hub and shaft nut. Spacer Part Number—\*PSF-65(302002)—†PSF-105(302003)



Motor & Model	Year	Boat Size & Recommendation	Blds.	Dia. & Pitch	Nearest OMC Equiv.	ALUMINUM			SUPER-PROP STAINLESS STEEL			
						Michigan Part No.	Price	Numeric	Nearest OMC Equiv.	Michigan Part No.	Price	Numeric
3-4 HP Weedless	52-73	Standard Replacement	3	6 1/2 x 4 1/2	203919	PJ3	\$ 23.00	012001				
3-4 HP Right Angle Drive	64-72	Standard Replacement	3	8 x 4 1/2	310208	PJ5	23.00	012002				
2.5, 4 HP	73 Thru	Light Runabouts—Light Loads	3	8 x 5 1/2	315858	PJ6	23.00	012003				
4-4 1/2-6-7 1/2-8 HP	80-83 80 Thru	Heavy Bts., Sailboats	3	8 x 7	391096	PJ47	41.00	012031				
		Standard Replacement	3	8 1/2 x 9	390237	PJ49	41.00	012032				
5 1/2-6 HP	54-65	14'-16' Bts.—Light Loads	3	7 3/4 x 6 1/2		AM431	37.00	012067				
5 HP	65-68	12'-14' Bts.—Light Loads	2	8 x 7 1/4	376968	PJ300	23.00	012060				
		12'-14' Bts.—Light Loads	3	8 x 7 1/2	380104	PJ7	25.00	012004				
6 HP	66-75	12'-14' Bts.—Light Loads	2	8 x 7 1/4	386955	PJ8	28.00	012005				
6 HP	76-79	Sailboats	3	8 x 4 1/2		AMC424	38.00	012069				
		14'-16' Bts.—Light Loads	3	7 3/4 x 6 1/2		AMC422	38.00	012068				
9 1/2-10 HP	64-73	20'-24' Bts.—Sailboats	3	8 1/4 x 6 1/2		SMC12	48.00	012100				
*10-12-14 HP Commercial & Workhorse	82 Thru	14'-16' Bts.—All Loads, Skis	3	8 1/4 x 8	383315	PJ11	34.00	012008				
		14'-16' Runabouts	3	8 1/4 x 9	391534	SMC18	42.00	012101				
		12'-14' Bts.—Light Loads	3	8 1/4 x 8 1/2	377635	PJ10	34.00	012007				
9.9-15 HP Thru Hub Exhaust	74 Thru	Heavy Bts., Sailboats	3	10 x 5	386669	PJ28	57.00	012020				
		14'-16' Bts.—All Loads, Skis	3	10 x 7	398126	PJ26	57.00	012018				
		Standard Replacement	3	9 1/2 x 10	386118	PJ25	57.00	012017	SMC7	\$121.00	016010	
		Weedless	2	9 x 10	386670	PJ27	57.00	012019				
10 HP	51-57	12'-14' Bts.—All Loads	3	9 x 8	277595	PJ9	40.00	012006				
15 HP	53-56	Cruisers, Houseboats, Sailboats	3	9 1/4 x 7	388294	SMC39	52.00	012102				
18 HP	57-73	16'-18' Bts.—Heavy Loads	3	9 x 8		PJ21	39.00	012014				
20 HP	69-73	16'-17' Bts.—All Loads, Skis	4	9 x 9		AMC448	71.00	012072				
25 HP Pin Drive	69-77	Weedless	3	9 x 10	592959	EWC19	50.00	012076				
		16'-17' Bts.—All Loads, Skis	3	8 3/4 x 11		PR20	50.00	012079				
		14'-16' Bts.—All Loads, Skis	3	8 3/4 x 12		PR22	50.00	012080				
		14'-16' Bts.—Light Loads	3	8 3/4 x 13		PR24	50.00	012081				
		14'-16' Bts.—Heavy Loads	3	9 x 9	379717	PJ19	39.00	012109				
		12'-14' Bts.—Light Loads	3	8 3/4 x 14		PR26	50.00	012082				
		12'-14' Bts.—Heavy Loads	3	9 x 10	383629	PJ16	39.00	012011				
		12'-14' Bts.—Light Loads	3	9 1/4 x 11	388088	PJ18	40.00	012013				
		12'-14' Bts.—Light Loads	3	9 1/4 x 12		PJ15	40.00	012010				
		Light Runabouts—Light Loads	2	9 1/4 x 12		AJC418	55.00	012064	AJC417	79.00	016013	
25 HP	51-55	Barges, Extra Heavy Boats	3	10 1/2 x 8		SMC47	66.00	012063				
28 HP	62-64	Cruisers, Houseboats, Sailboats	3	10 1/2 x 10		PJ41	50.00	012027				
30 HP	56	20'-24' Cruisers—One Engine	3	10 1/4 x 10		PR90	68.00	012083				
33 HP	65-70	20'-24' Bts.—One Engine	3	11 x 10		AMC384	52.00	012110				
35 HP	57-59	17'-19' Bts.—All Loads, Skis	3	10 3/8 x 11 1/2	378581	PJ31	50.00	012023				
40 HP	60-76	17'-19' Bts.—All Loads, Skis	3	10 1/4 x 11		PR92	68.00	012084				
40 HP Commercial & Workhorse Pin Drive	78-85	17'-19' Bts.—All Loads, Skis	4	10 x 11		AMC444	79.00	012070				
		16'-17' Bts.—All Loads, Skis	3	10 1/4 x 12		PR94	68.00	012085	PR95	101.00	016004	
		16'-17' Bts.—All Loads, Skis	4	10 x 12		AMC445	79.00	012071				
		14'-16' Bts.—All Loads, Skis	3	10 1/4 x 13		PR96	68.00	012086	PR97	101.00	016005	
		14'-16' Bts.—All Loads, Skis	3	10 3/8 x 12 1/2	378580	PJ30	50.00	012022				
		14'-16' Bts.—All Loads, Skis	3	10 1/2 x 12	380637	PJ32	50.00	012024				
		14'-16' Bts.—Light Loads	3	10 3/8 x 13 1/4	378579	PJ35	50.00	012025				
		14'-16' Bts.—Light Loads	3	10 1/2 x 13	384460	PJ42	50.00	012028				
		12'-14' Bts.—Light Loads	3	10 3/8 x 14	378571	PJ40	50.00	012026				
		12'-14' Bts.—Light Loads	2	10 1/2 x 16		AJC469	71.00	012065				
25 HP	78-84	Cruisers, Houseboats, Sailboats	3	9 1/4 x 7	389067	PJ13	40.00	012009	SMC34	79.00	016011	
25 HP Commercial & Workhorse Spline Drive	78 Thru	17'-19' Bts.—All Loads, Skis	3	9 x 8		PJ44	40.00	012029				
		16'-18' Bts.—Heavy Loads	3	9 x 9	389068	PJ29	40.00	012021				
		Weedless	3	9 x 10		EWC29	50.00	012078				
		16'-17' Bts.—All Loads, Skis	3	8 3/4 x 11		PR420	50.00	012095	PR421	77.00	016006	
		15'-17' Bts.—All Loads, Skis	3	9 x 10	389069	PJ22	40.00	012015				
		14'-17' Bts.—All Loads, Skis	3	9 1/4 x 11	388883	PJ24	40.00	012016				
		14'-17' Bts.—Light Loads	3	9 1/4 x 12	389944	PJ45	40.00	012030				
		14'-16' Bts.—All Loads, Skis	3	8 3/4 x 12		PR422	50.00	012096	PR423	77.00	016007	
		14'-16' Bts.—Light Loads	3	8 3/4 x 13		PR424	50.00	012097	PR425	77.00	016008	
		12'-14' Bts.—Light Loads	3	8 3/4 x 14		PR426	50.00	012098				
		Light Runabouts—Light Loads	2	9 1/4 x 12		AJC318	55.00	012062	AJC317	79.00	016002	
20 HP	84 Thru	Cruisers, Houseboats	3	11 1/4 x 7	387320	PJ94	65.00	012053				
25 HP	84 Thru	17'-20' Bts.—All Loads, Skis	3	11 x 9	386317	PJ95	65.00	012054				
28 HP	84 Thru	16'-18' Bts.—All Loads, Skis	3	10 1/2 x 11	386637	PJ96	65.00	012055				
30 HP	84 Thru	15'-17' Bts.—All Loads, Skis	3	10 x 13	386933	PJ97	65.00	012056				
35 HP Thru Hub Exhaust	76-83	13'-15' Bts.—All Loads, Skis	3	10 x 15	390380	PJ98	65.00	012057				

\* If currently using uncupped prop, use cupped prop having 2" less pitch. Boats with power trim use same pitch. \* Engines being offered in European market only.

Continued on next page



**(EVINRUDE, JOHNSON CONTINUED)**

Motor & Model	Year	Boat Size & Recommendation	Blids.	Dia. & Pitch	ALUMINUM				SUPER-PROP STAINLESS STEEL					
					Nearest OMC Equiv.	Michigan Part No.	Price	Numeric	Nearest OMC Equiv.	Michigan Part No.	Price	Numeric		
50 HP V-4 Pin Drive	58-59	Cruisers, Houseboats, Sailboats	3	13 x 8		PJ51	\$ 88.00	012034						
		20'-24' Bts.—All Loads	3	13 x10		PJ53	88.00	012035						
		14'-16' Bts.—All Loads, Skis	3	12½x14	278155	PJ50	70.00	012033						
40 HP 2 Cyl. 48 HP 50 HP 2 Cyl. 55 HP 2 Cyl. 60 HP 2 Cyl. 75 HP 3 Cyl. Sprint, Formula E Small Gear Case Thru Hub Exhaust	84 Thru 87 Thru 75 Thru 76-79 80-85 75-85	Cruisers, Houseboats	3	13 x11	386907	PJ58	79.00	012036						
		15'-18' Bts.—All Loads, Skis	3	12½x13	386909	PJ59	79.00	012037						
		14'-17' Bts.—All Loads, Skis	3	12¼x15	386786	PJ60	79.00	012038	390850	SS0315C	\$309.00	013010		
		13'-15' Bts.—Light Loads	3	11¾x17	386841	PJ61	79.00	012039						
		12'-14' Bts.—Light Loads	3	11½x19	386908	PJ62	79.00	012040						
45 HP Commercial & Workhorse 50 HP 2 Cyl. 50 HP 2 Cyl.* 55 HP 2 Cyl.* Commercial & Workhorse 55 HP 3 Cyl. 60 HP 3 Cyl. 60 HP 3 Cyl. 65 HP 3 Cyl. 65 HP Commercial & Workhorse 70 HP 75 HP Lg. Gear Case All Thru-Hub Exhaust	86 Thru 71-74 77-79 80 Thru 68-69 70-71 86 Thru 72-73 84 Thru 74 Thru 75-84	Cruisers, Houseboats	4	14 x10		DQ320	124.00	012074						
		Cruisers, Houseboats	3	14 x11	382761	PJ87	83.00	012047						
		Cruisers, Houseboats	3	14 x13	382762	PJ79	83.00	012048						
		Cruisers, Houseboats	3	14 x13	391668	*PJ88C	92.00	011001						
		19'-22' Bts.—All Loads	4	14 x12		DQ328	124.00	012075						
		17'-19' Bts.—All Loads, Skis	3	13¾x15	382763	PJ80	83.00	012049						
		17'-19' Bts.—All Loads, Skis	3	13¾x15	391198	*PJ89C	92.00	011002	389949	SS0515-II-C	294.00	013011		
		15'-18' Bts.—All Loads, Skis	3	13¼x17	382764	PJ81	83.00	012050						
		15'-18' Bts.—All Loads, Skis	3	13¼x17	391199	*PJ90C	92.00	011003	389948	SS0517-II-C	294.00	013012		
		14'-16' Bts.—All Loads, Skis	3	13 x19	382765	PJ82	83.00	012051						
		14'-16' Bts.—All Loads, Skis	3	13 x19	390896	*PJ91C	92.00	011004	389510	SS0519-II-C	294.00	013013		
		14'-16' Bts.—Light Loads	3	13 x21	389788	*PJ83C	92.00	011005	389512	SS0521-II-C	294.00	013014		
		60,65,75,80, V-4 85, 90, HP V-4 †Small Hub Prop —uses special small nut— Part No. NP74 \$11.00 Pin Drive	60-68	20'-24' Bts.—One Engine	3	10½x 8		SMC864	67.00	012107				
				17'-19' Bts.—All Loads, Skis	3	10 x 9¼	379260	†PJ74	52.00	012042				
				17'-19' Bts.—All Loads, Skis	3	9½x10	593437	PJ78	56.00	012046				
17'-19' Bts.—All Loads, Skis	3			10¼x 9		SMC862	67.00	012106						
17'-19' Bts.—All Loads, Skis	3			10¼x10	378040	PJ75	56.00	012043						
16'-17' Bts.—All Loads, Skis	3			10 x11	381446	†PJ73	52.00	012041						
16'-17' Bts.—All Loads, Skis	3			10 x11	377978	PJ76	54.00	012044						
14'-16' Bts.—All Loads, Skis	3			10 x12	378039	PJ77	54.00	012045						
100 HP V-4 Pin Drive	66-68			20'-24' Bts.—One Engine	3	14 x11	382676	PR115	131.00	012089				
				20'-24' Bts.—One Engine	3	14 x12	382017	PR118	131.00	012090				
		17'-19' Bts.—All Loads, Skis	3	13 x14	381442	PR105	131.00	012087						
		14'-16' Bts.—All Loads, Skis	3	12½x16	381020	PR109	131.00	012088						
85 HP V-4 88 HP 90 HP V-4 100 HP V-4 100 HP V-4 110 HP 115 HP V-4 120 HP V-4 125 HP V-4 135 HP V-4 140 HP V-4 140 HP V-4 Thru-Hub Exhaust	69-80 81 Thru 81 Thru 79-80 86 Thru 86 Thru 73-85 86 Thru 71-72 73-76 77-84 86 Thru	Cruisers, Houseboats	4	14 x10		DQ320	124.00	012074						
		Cruisers, Houseboats	4	14 x12		DQ328	124.00	012075						
		Cruisers, Houseboats	3	14 x11	382761	PJ87	83.00	012047						
		Cruisers, Houseboats	3	14 x13	382762	PJ79	83.00	012048						
		Cruisers, Houseboats	3	14 x13	391668	*PJ88C	92.00	011001						
		20'-24' Bts.	3	13¾x15	382763	PJ80	83.00	012049						
		20'-24' Bts.	3	13¾x15	391198	*PJ89C	92.00	011002	389949	SS0515-II-C	294.00	013011		
		19'-22' Bts.—All Loads	3	13¼x17	382764	PJ81	83.00	012050						
		19'-22' Bts.—All Loads	3	13¼x17	391199	*PJ90C	92.00	011003	389948	SS0517-II-C	294.00	013012		
		17'-19' Bts.—All Loads, Skis	3	13 x19	382765	PJ82	83.00	012051						
		17'-19' Bts.—All Loads, Skis	3	13 x19	390896	*PJ91C	92.00	011004	389510	SS0519-II-C	294.00	013013		
		15'-18' Bts.—All Loads, Skis	3	13 x21	389788	*PJ83C	92.00	011005	389512	SS0521-II-C	294.00	013014		
		100 HP V-4 Commercial & Workhorse 120-140 HP V-4 150 HP V-6 155 HP V-6 Commercial & Workhorse 175 HP V-6 185 HP V-6 200 HP V-6 225 HP V-6 235 HP V-6 2.6L V-6 275 HP V-8 3.6L V-8 Thru-Hub Exhaust	84 Thru 85 78 Thru 84 Thru 77 Thru 84-85 76 Thru 86 Thru 78-85 85 Thru	Cruisers, Houseboats	3	15½x10		*PJ199C	151.00	011015				
				Cruisers, Houseboats	3	15¾x13	387158	PJ200	108.00	012059				
				Cruisers, Houseboats	3	15¾x13	391536	PJ200C	108.00	011016				
Cruisers, Houseboats	3			15½x15	391535	PJ201C	108.00	011006						
20'-26' Bts.—All Loads, Skis	3			15 x17	391200	PJ202C	108.00	011007						
20'-26' Bts.—All Loads, Skis	3			14½x17					391290	SS0647C	346.00	013002		
18'-22' Bts.—All Loads, Skis	3			14½x19	391201	PJ203C	108.00	011008						
18'-22' Bts.—All Loads, Skis	3			14 x19					389924	SS0649C	346.00	013003		
17'-19' Bts.—All Loads, Skis	3			14½x21	391202	PJ204C	108.00	011009						
17'-19' Bts.—All Loads, Skis	3			13¾x21					389923	SS0651C	346.00	013004		
15'-18' Bts.—All Loads, Skis	3			14½x23	391203	PJ205C	108.00	011010						
15'-18' Bts.—All Loads, Skis	3			13½x23					389019	SS0653C	346.00	013005		

\* If currently using uncupped prop, use cupped prop having 2" less pitch. Boats with power trim use same pitch. \* Engines being offered in European market only.  
 • 2½" of skeg must be removed for proper fit. Use thrust washer 333592.

Continued on next page

**Why Stainless Steel?** For the ultimate in longevity, choose a Michigan Wheel stainless steel prop. A Michigan Wheel stainless steel prop is five times stronger than aluminum props. And only Michigan Wheel provides a bright mirror finish on every stainless steel prop, for beauty as well as corrosion-resistance.



# (EVINRUDE, JOHNSON CONTINUED)

## OMC OUTBOARD ("Heavy-Duty Special" Hard to Plane Boats)

Motor & Model	Year	Boat Size (Speed MPH)	Mat'l.	No. of Blades	Dia. & Pitch	Part No.	Price	Numeric
120-140 HP V-4 Thru-Hub Exhaust	86 Thru	24'-26' Twin (36-45)	S.S.	3	15 x19	SSO819C	\$386.00	013016
		22'-24' Single (33-40)	S.S.	3	15 1/4x17	SSO817C	386.00	013015
		22'-24' Twin (36-45)	S.S.	3	15 x19	SSO819C	386.00	013016
		20'-22' Single (36-45)	S.S.	3	15 x19	SSO819C	386.00	013016
		20'-22' Twin (39-50)	S.S.	3	14 1/2x21	SSO821C	386.00	013017
		18'-21' Single (39-50)	S.S.	3	14 1/2x21	SSO821C	386.00	013017
150-235 HP V-6 Thru-Hub Exhaust	78 Thru	32'+ Twin (35-45)	S.S.	3	15 1/4x17	SSO817C	386.00	013015
		24'-28' Single (35-45)	S.S.	3	15 1/4x17	SSO817C	386.00	013015
		24'-28' Twin (40-48)	S.S.	3	15 x19	SSO819C	386.00	013016
		22'-24' Single (40-48)	S.S.	3	15 x19	SSO819C	386.00	013016
		22'-24' Twin (45-53)	S.S.	3	14 1/2x21	SSO821C	386.00	013017
		20'-22' Single (45-53)	S.S.	3	14 1/2x21	SSO821C	386.00	013017
		275 HP-3.6 GT V-8 Thru-Hub Exhaust	85 Thru	32'+ Twin (38-45)	S.S.	3	15 1/4x17	SSO817C
		26'-30' Single (38-45)	S.S.	3	15 1/4x17	SSO817C	386.00	013015
		24'-28' Twin (43-45)	S.S.	3	15 x19	SSO819C	386.00	013016
		22'-24' Single (43-45)	S.S.	3	15 x19	SSO819C	386.00	013016
		24'-28' Twin (48-60)	S.S.	3	14 1/2x21	SSO821C	386.00	013017
		20'-22' Single (48-60)	S.S.	3	14 1/2x21	SSO821C	386.00	013017

## THE EDGE™ (High Performance Propellers)

### STAINLESS STEEL

Model	Year	Boat Speed (MPH)	Nearest Equiv. Part No.	Mat'l.	No. of Blades	Dia. & Pitch	Part No.	Price	Numeric
150-235 HP V-6 XP150, GT150	76 Thru	42-52	394753	S.S.	3	14 1/4x20	SSO922C	\$390.00	013006
		46-57	394754	S.S.	3	14 1/4x22	SSO922C	390.00	013007
		50-63	394755	S.S.	3	14 1/4x24	SSO924C	390.00	013008
		54-70	394756	S.S.	3	14 1/4x26	SSO926C	390.00	013009
2.6 XP 2.6 GT	84 Thru	51-63	394754	S.S.	3	14 1/4x22	SSO922C	390.00	013007
		55-66	394755	S.S.	3	14 1/4x24	SSO924C	390.00	013008
		60-72+	394756	S.S.	3	14 1/4x26	SSO926C	390.00	013009

# TOHATSU, NISSAN

Motor & Model	Year	Boat Size & Recommendation	Blids.	Dia. & Pitch	ALUMINUM			STAINLESS STEEL		
					Michigan Part No.	Price	Numeric	Michigan Part No.	Price	Numeric
40 HP	84 Thru	20'-24' Bts.—All Loads	3	10 1/4x10	PR333C	\$ 85.00	031006			
		17'-19' Bts.—All Loads	3	10 1/4x11	PR335C	85.00	031007			
		16'-17' Bts.—All Loads	3	10 1/4x12	PR337C	85.00	031008			
		14'-16' Bts.—All Loads	3	10 1/4x13	PR339C	85.00	031009			
		14'-16' Bts.—All Loads	3	10 1/4x15	PR343C	85.00	031010			
		12'-14' Bts.—All Loads	3	10 3/4x17	PR345C	85.00	031011			
55-70 HP	84 Thru	Cruisers, Houseboats	3	13 x11	PJ58C	87.00	011018			
		15'-18' Bts.—All Loads, Skis	3	12 1/2x13	PJ59C	87.00	011019			
		14'-17' Bts.—All Loads, Skis	3	12 1/4x15	PJ60C	87.00	011020	SS0315C	\$309.00	013010
		13'-15' Bts.—All Loads, Skis	3	11 3/4x17	PJ61C	87.00	011021			
		12'-14' Bts.—All Loads, Skis	3	11 1/2x19	PJ62C	87.00	011022			

# McCULLOCH, SCOTT, AERO

Motor & Model	Year	Boat Size & Recommendation	Blids.	Dia. & Pitch	ALUMINUM			BRONZE		
					Michigan Part No.	Price	Numeric	Michigan Part No.	Price	Numeric
3 1/2-4 HP	46-73	Standard Replacement	2	7 3/8 x 6	SA10	\$ 36.00	152030			
7 1/2 HP Weedless	60-73	12'-14' Bts.—Light Loads	3	6 x 6	SAC371	52.00	152034			
		Light Runabouts—Light Loads	2	6 x 8	AJC63	38.00	152001			
12-14.1 HP	60-67	Standard Replacement	3	8 1/4 x 8 1/2	AMC535	41.00	152003			
22-25-27.7-28 HP	58-67	14'-16' Bts.—Light Loads	3	9 x10	PS25	59.00	152020			
40-43.7-45 HP Right-Hand Prop	59-69	17'-19' Bts.—All Loads, Skis	3	10 x10	SMC635	67.00	152035			
		16'-17' Bts.—All Loads, Skis	3	10 x11	SMC637	67.00	152036			
		14'-16' Bts.—All Loads, Skis	3	10 x12	PS40	63.00	152021			
60-75.2 HP	58-69	20'-24' Bts.—One Engine	3	11 1/2x10	PS74	75.00	152026			
		17'-19' Bts.—All Loads, Skis	3	11 1/2x11	PS73	75.00	152025			
		16'-17' Bts.—All Loads, Skis	3	11 1/2x12	PS71	75.00	152023			
		14'-16' Bts.—All Loads, Skis	3	11 1/2x13	PS72	75.00	152024			



Motor & Model	Year	Boat Size & Recommendation	Blids.	Dia. & Pitch	ALUMINUM				SUPER-PROP STAINLESS STEEL							
					Nearest Mariner Equiv.	Michigan Part No.	Price	Numeric	Nearest Mariner Equiv.	Michigan Part No.	Price	Numeric				
8 HP	76-84	20'-24' Bts.—Sailboats	3	8¼x 6½	48-11674M	<b>SMC12</b>	\$ 48.00	<b>012100</b>								
		14'-16' Bts.—All Loads, Skis	3	8¼x 8	48-11672M	<b>PJ11</b>	34.00	<b>012008</b>								
		14'-16' Bts.—Light Loads	3	8¼x 9		<b>SMC18</b>	42.00	<b>012101</b>								
15A 20 HP 25 HP	76-77 76-78 77-78	Houseboats, Sailboats	3	9¼x 7	48-82767	<b>SMC39</b>	52.00	<b>012102</b>								
		12'-14' Bts.—Heavy Loads	3	9 x10	48-82768	<b>PJ16</b>	39.00	<b>012011</b>								
		12'-14' Bts.—All Loads, Skis	3	9¼x11	48-82769	<b>PJ18</b>	40.00	<b>012013</b>								
20-25 HP Thru-Hub Exhaust	85 Thru	15'-19' Bts.	3	10¾x11	48-43584A40	<b>PM24C</b>	74.00	<b>031049</b>								
		13'-17' Bts.	3	10¾x13	48-43586A40	<b>PM23C</b>	74.00	<b>031048</b>								
		Up to 14' Bts.	3	10¼x14½	48-43590A40	<b>PM22C</b>	74.00	<b>031047</b>								
25 HP 28 HP 30 HP Flow-Thru Exhaust	80-84 76-78 79 Thru	16'-18' Bts.—All Loads, Skis	3	9¾x 9	48-81647	<b>PM39</b>	61.00	<b>022001</b>								
		14'-17' Bts.—All Loads, Skis	3	9¾x10½	48-81649	<b>PM40</b>	61.00	<b>022002</b>								
		13'-16' Bts.—Light Loads	3	9¾x12	48-82826	<b>PM42</b>	61.00	<b>022003</b>								
W40 HP For Non "Thru-Prop" Exhaust	77-78	18'-20' Bts.—All Loads	3	11¾x 8¾	48-83573	<b>PM62</b>	76.00	<b>022006</b>								
		16'-17' Bts.—All Loads, Skis	3	11¾x10	48-83552	<b>PM61</b>	76.00	<b>022005</b>								
		15'-17' Bts.—Light Loads	3	11½x12	48-83535	<b>PM60</b>	76.00	<b>022004</b>								
40 HP W48 HP 60 HP 70 HP All Thru-Hub Exhaust	79 Thru All Yrs. 77 Thru 78-83	19'-22' Bts.—All Loads	3	11¼x10	48-73132A4	<b>PM600C</b>	92.00	<b>031015</b>								
		15'-18' Bts.—All Loads, Skis	3	10¾x12	48-73134A4	<b>PM612C</b>	92.00	<b>031016</b>								
		15'-18' Bts.—All Loads, Skis	3	10¼x12						48-79792A4	<b>SSM212C</b>	\$267.00	<b>033001</b>			
		16'-17' Bts.—All Loads, Skis	3	10¾x13	48-73136A4	<b>PM613C</b>	92.00	<b>031017</b>								
		14'-16' Bts.—Light Loads	3	10¼x14	48-73138A4	<b>PM614C</b>	92.00	<b>031018</b>								
		13'-15' Bts.—Light Loads	3	10¾x15	48-73140A4	<b>PM615C</b>	92.00	<b>031019</b>								
		12'-15' Bts.—Light Loads	3	10 x17	48-73144A4	<b>PM617C</b>	92.00	<b>031020</b>								
60 HP	76	19'-22' Bts.—All Loads	3	12¼x10	48-61812A1	<b>PM530</b>	92.00	<b>032045</b>								
		17'-19' Bts.—All Loads, Skis	3	12 x11	48-61814A1	<b>PM527</b>	92.00	<b>032044</b>								
		15'-18' Bts.—All Loads, Skis	3	11¾x12	48-61816A1	<b>PM524</b>	92.00	<b>032043</b>								
		16'-17' Bts.—All Loads, Skis	3	11½x13	48-61818A1	<b>PM521</b>	92.00	<b>032042</b>								
		14'-16' Bts.—Light Loads	3	11¼x14	48-61820A1	<b>PM518</b>	92.00	<b>032041</b>								
		13'-15' Bts.—Light Loads	3	11 x15	48-61822A1	<b>PM515</b>	92.00	<b>032040</b>								
		12'-14' Bts.—Light Loads	3	10¾x16	48-61824A1	<b>PM513</b>	92.00	<b>032039</b>								
		20'-24' Bts.	3	13 x13	48-58826	<b>PR153</b>	94.00	<b>032090</b>								
		19'-22' Bts.—All Loads	3	13 x15	48-32390	<b>PR155</b>	94.00	<b>032091</b>								
		19'-22' Bts.—All Loads	3	13 x15		<b>PR155C</b>	101.00	<b>031001</b>								
80 HP **Use Thrust Washer 65091 *Use Thrust Washer 75282 †Requires High Performance Trim Tab C46399A1 For Proper Fit	77	19'-22' Bts.—All Loads	3	13¾x15												
		17'-19' Bts.—All Loads, Skis	3	13 x17	48-65022	<b>PR157</b>	94.00	<b>032092</b>								
		17'-19' Bts.—All Loads, Skis	3	13 x17		<b>PR157C</b>	101.00	<b>031002</b>								
		17'-19' Bts.—All Loads, Skis	3	13¼x17						48-72764A4	† <b>SSM617-II-C</b>	305.00	<b>033017</b>			
		16'-17' Bts.—All Loads, Skis	3	13 x19	48-65024	<b>PR159</b>	94.00	<b>032093</b>								
		16'-17' Bts.—All Loads, Skis	3	13 x19		<b>PR159C</b>	101.00	<b>031003</b>			48-72762A4	<b>SSM619-II-C</b>	305.00	<b>033018</b>		
		15'-18' Bts.—All Loads, Skis	3	13 x21	48-62780	<b>PR161</b>	94.00	<b>032094</b>								
		15'-18' Bts.—All Loads, Skis	3	13 x21		<b>PR161C</b>	101.00	<b>031004</b>			48-72500A4	<b>SSM621-II-C</b>	305.00	<b>033019</b>		
		14'-16' Bts.—All Loads, Skis	3	13 x23	48-65736	<b>PR163</b>	94.00	<b>032095</b>								
		14'-16' Bts.—All Loads, Skis	3	13 x23	48-65736	<b>PR163C</b>	101.00	<b>031005</b>								
		75 HP In Line 4 Cyl.	84 Thru 78-83	20'-24' Bts.—All Loads, Skis	3	13¾x15	48-77342A4	<b>PM315C</b>	100.00	<b>031041</b>						
		17'-19' Bts.—All Loads, Skis		3	13¼x17	48-77344A4	<b>PM317C</b>	100.00	<b>031042</b>		48-72764A4	† <b>SSM617-II-C</b>	305.00	<b>033017</b>		
		80 HP In Line 4 Cyl.	78-79 82 Thru 78 Thru	16'-18' Bts.—All Loads, Skis	3	13 x19	48-77346A4	<b>PM319C</b>	100.00	<b>031043</b>			48-72762A4	<b>SSM619-II-C</b>	305.00	<b>033018</b>
		80-140 HP 90 HP 115 HP In Line 6 Cyl. *Use Thrust Washer 75282		15'-18' Bts.—All Loads, Skis	3	12¾x21	48-77348A4	<b>PM321C</b>	100.00	<b>031044</b>						
135 HP V-6 150 HP V-6 175 HP V-6 200 HP V-6 220 HP Magnum EFI *Use Thrust Washer 77987	86 Thru 79 Thru 78-81 79 Thru 87 Thru	30'+(40-45MPH) Sgl. or Twin	3	15¼x17												
		28'-30'(45-50MPH) Sgl. or Twin	3	15 x19												
		24'-28'(50-55MPH) Sgl. or Twin	3	14½x21												
		Cruisers, Houseboats	3	16 x11	48-78112A4	<b>PM211C</b>	114.00	<b>031021</b>								
		Cruisers, Houseboats	3	16 x13	48-78114A4	<b>PM213C</b>	114.00	<b>031022</b>								
		Cruisers, Houseboats	3	15¼x15	48-78116A4	<b>PM215C</b>	114.00	<b>031023</b>								
		Cruisers, Houseboats	3	14½x15						48-93272A4	<b>SSM245C</b>	337.00	<b>033002</b>			
		Cruisers, Houseboats	3	14½x17	48-78118A4	<b>PM217C</b>	114.00	<b>031024</b>		48-79794A4	<b>SSM247C</b>	337.00	<b>033003</b>			
		Cruisers, Houseboats	3	14 x19	48-78120A4	<b>PM219C</b>	114.00	<b>031025</b>		48-73980A4	<b>SSM249C</b>	337.00	<b>033004</b>			
		19'-20' Bts.—All Loads, Skis	3	13¾x21	48-78122A4	<b>PM221C</b>	114.00	<b>031026</b>		48-73982A4	<b>SSM251C</b>	337.00	<b>033005</b>			
18'-20' Bts.—All Loads, Skis	3	13½x23	48-78124A4	<b>PM223C</b>	114.00	<b>031027</b>		48-75724A4	<b>SSM253C</b>	337.00	<b>033006</b>					

### THE EDGE™ (High Performance Propellers)

### STAINLESS STEEL

Model	Year	Boat Speed (MPH)	Nearest Equiv. Part No.	Mat'l.	No. of Blades	Dia. & Pitch	Part No.	Price	Numeric
150 HP V-6	76 Thru	42-52		<b>SS</b>	3	14¼x20		\$386.00	<b>033012</b>
		46-57	48-11070-A4	<b>SS</b>	3	14¼x22	<b>SSM822C</b>	386.00	<b>033013</b>
		50-63	48-11074-A4	<b>SS</b>	3	14¼x24	<b>SSM824C</b>	386.00	<b>033014</b>
		54-70	48-11078-A4	<b>SS</b>	3	14¼x26	<b>SSM826C</b>	386.00	<b>033015</b>
200 HP V-6	78 Thru	53-58	48-11070-A4	<b>SS</b>	3	14¼x22	<b>SSM822C</b>	386.00	<b>033013</b>
		57-63	48-11074-A4	<b>SS</b>	3	14¼x24	<b>SSM824C</b>	386.00	<b>033014</b>
		62-70	48-11078-A4	<b>SS</b>	3	14¼x26	<b>SSM826C</b>	386.00	<b>033015</b>

†Requires High Performance Trim Tab C46399A1 For Proper Fit.



Motor & Model	Year	Boat Size & Recommendation	Blids.	Dia. & Pitch	ALUMINUM				SUPER-PROP STAINLESS STEEL			
					Nearest Merc. Equiv.	Michigan Part No.	Price	Numeric	Nearest Merc. Equiv.	Michigan Part No.	Price	Numeric
40 45	73-75 73-81	Standard Replacement	2	8 1/4 x 6	48-63494A1	PM8	\$ 40.00	032014				
39-40	68-72	Standard Replacement	2	8 1/4 x 6	48-47940A1	PM16	50.00	032017				
39	64-67	Standard Replacement	2	8 x 6	48-31214A1	PM4	42.00	032012				
60	68	Standard Replacement	2	7 7/8 x 8	48-47938A1	PM18	47.00	032018				
60	61-67	14'-16' Bts.—All Loads	2	8 x 6	48-31214A1	PM4	42.00	032012				
		Standard Replacement	2	8 x 8	48-31105A1	PM6	42.00	032013				
Mark 28, 28A, 200-250	58-62	14'-16' Bts.—All Loads, Skis	3	9 1/4 x 9	48-28037A1	PM27	61.00	032025				
		14'-16' Bts.—Light Loads	2	9 1/2 x 11	48-28036A1	PM28	61.00	032027				
		12'-14' Bts.—Light Loads	2	9 1/2 x 12	48-28038A1	PM29	61.00	032028				
Mark 30	56-58	14'-16' Bts.—All Loads, Skis	3	9 1/2 x 10		AMC506	88.00	032074				
Merc 7.5, 9.8, 110	68 Thru 68-79	Standard Replacement	2	9 x 9	48-47922A1	PM21	37.00	032021				
		Light Runabouts—Light Loads	2	9 x 10	48-47926A1	PM19	37.00	032019				
		14'-16' Bts.—All Loads, Skis	3	9 x 7	48-47670A1	PM20	55.00	032020				
Merc 110	62-67	14'-16' Bts.—All Loads, Skis	2	9 x 9	48-32364A1	PM11	41.00	032016				
		12'-14' Bts.—Light Loads	2	9 x 10	48-31504A1	PM10	41.00	032015				
Merc 20	63-81	14'-16' Bts.—All Loads, Skis	3	9 1/4 x 9	48-33482A1	PM26	55.00	032111				
		Standard Replacement	2	10 x 11		PM30	54.00	032112				
18 HP 20 HP 25 HP Thru-Hub Exhaust	80-85 86 Thru 80 Thru	15'-19' Bts.	3	10 3/8 x 11	48-89852A4	PM24C	74.00	031049				
		13'-17' Bts.	3	10 3/8 x 13	48-86848A4	PM23C	74.00	031048				
		Up to 14' Bts.	3	10 1/4 x 14 1/2	48-89854A4	PM22C	74.00	031047				
Mark 35A, Mark 50, 55, Mark 58, 58A, 300, 350, 400, 500, All 11 Spline	56-61	16'-17' Bts.—All Loads, Skis	3	10 x 10	48-22575A2	AMC580S	95.00	032077				
		14'-16' Bts.—All Loads, Skis	3	10 x 11		AMC577S	95.00	032075				
		14'-16' Bts.—All Loads, Skis	2	10 1/4 x 10	48-29985A2	PM56	72.00	032035				
		14'-16' Bts.—Light Loads	2	10 1/4 x 12	48-22914A2	PM55	72.00	032034				
		12'-14' Bts.—Light Loads	2	10 1/4 x 13	48-29986A2	PM54	72.00	032033				
300, 350 400, 450, 500 Prop Exhaust	62-69	Cruisers, Houseboats, Sailboats	3	10 1/4 x 9	48-32194A1	PR31	77.00	032083				
		17'-19' Bts.—All Loads, Skis	3	10 1/4 x 10	48-33774A1	PR33	77.00	032084				
		16'-17' Bts.—All Loads, Skis	3	10 1/4 x 11	48-38098A1	PR35	77.00	032085				
		14'-16' Bts.—All Loads, Skis	3	10 1/4 x 12	48-38094A1	PR37	77.00	032086				
		14'-16' Bts.—Light Loads	3	10 1/4 x 13	48-38090A1	PR39	77.00	032087				
		12'-14' Bts.—Light Loads	3	10 1/4 x 15	48-38086A1	PR43	77.00	032088				
400-402-500 Prop Exhaust	70-73	20'-24' Bts.—All Loads	3	10 1/4 x 10	48-56246A1	PR333	78.00	032096				
		17'-19' Bts.—All Loads, Skis	3	10 1/4 x 11	48-56244A1	PR335	78.00	032097				
		16'-17' Bts.—All Loads, Skis	3	10 1/4 x 12	48-56240A1	PR337	78.00	032098				
		14'-16' Bts.—All Loads, Skis	3	10 1/4 x 13	48-56236A1	PR339	78.00	032099				
		14'-16' Bts.—Light Loads	3	10 1/4 x 15	48-56232A1	PR343	78.00	032100				
		12'-14' Bts.—Light Loads	3	10 3/4 x 17	48-56230A1	PR345	78.00	032101				
402-500 650	74-76 72-76	19'-22' Bts.—All Loads	3	12 1/4 x 10	48-61812A1	PM530	92.00	032045				
		17'-19' Bts.—All Loads, Skis	3	12 x 11	48-61814A1	PM527	92.00	032044	48-63548A1	SMC439	\$136.00	036009
		16'-17' Bts.—All Loads, Skis	3	11 3/4 x 12	48-61816A1	PM524	92.00	032043	48-63546A1	SMC438	136.00	036008
		15'-18' Bts.—All Loads, Skis	3	11 1/2 x 13	48-61818A1	PM521	92.00	032042	48-63544A1	SMC437	136.00	036007
		14'-16' Bts.—Light Loads	3	11 1/4 x 14	48-61820A1	PM518	92.00	032041	48-63542A1	SMC436	136.00	036006
		13'-15' Bts.—Light Loads	3	11 x 15	48-61822A1	PM515	92.00	032040	48-63540A1	SMC435	136.00	036005
		12'-14' Bts.—Light Loads	3	10 3/4 x 16	48-61824A1	PM513	92.00	032039	48-63538A1	SMC434	136.00	036004
402-500-700 (Use 1" less Pitch for 402)	77-78	17'-19' Bts.—All Loads, Skis	3	11 1/4 x 10	48-73132A4	PM600C	92.00	031015				
35 HP 40 HP 45 HP 50 HP 60 HP 70 HP Thru-Hub Exhaust	84 Thru 79-83 86 Thru 79 Thru 79-83 Thru 84	16'-18' Bts.—All Loads, Skis	3	10 3/8 x 12	48-73134A4	PM612C	92.00	031016				
		16'-18' Bts.—All Loads, Skis	3	10 1/4 x 12					48-79792A4	SSM212C	267.00	033001
		15'-17' Bts.—All Loads, Skis	3	10 3/8 x 13	48-73136A4	PM613C	92.00	031017				
		14'-17' Bts.—All Loads	3	10 1/4 x 14	48-73138A4	PM614C	92.00	031018				
		14'-16' Bts.—Light Loads	3	10 1/8 x 15	48-73140A4	PM615C	92.00	031019				
		13'-15' Bts.—Light Loads	3	10 x 17	48-73144A4	PM617C	92.00	031020				
650 4 Cyl. (2-1)	61-70	20'-24' Bts.	4	14 x 10		**DQ430	122.00	**032078				
700 4 Cyl. 800-850 6 Cyl. 900-1150 (All 1.78:1 Gear)	Thru 70 Thru 72 77-84	20'-24' Bts.	3	13 x 11	48-35936A3	**PR151	94.00	**032089				
		19'-22' Bts.	3	13 x 13	48-32392A3	**PR153	94.00	**032090				
		17'-19' Bts.—All Loads, Skis	3	13 x 15	48-32390A3	**PR155	94.00	**032091				
		17'-19' Bts.—All Loads, Skis	3	13 3/4 x 15		**PR155C	101.00	**031001			† SSM615-II-C	305.00 *033016
		16'-18' Bts.—All Loads, Skis	3	13 x 17	48-32264A3	**PR157	94.00	**032092				
		16'-17' Bts.—All Loads, Skis	3	13 1/4 x 17		**PR157C	101.00	**031002	48-72764A4	† SSM617-II-C	305.00 *033017	
		15'-18' Bts.—All Loads, Skis	3	13 x 19	48-32750A3	**PR159	94.00	**032093				
		15'-18' Bts.—All Loads, Skis	3	13 x 19		**PR159C	101.00	**031003	48-72762A4	*SSM619-II-C	305.00 *033018	
		14'-16' Bts.—All Loads, Skis	3	13 x 21	48-32746A3	**PR161	94.00	**032094				
		14'-16' Bts.—All Loads, Skis	3	13 x 21		**PR161C	101.00	**031004	48-72500A4	*SSM621-II-C	305.00 *033019	

†Requires High Performance Trim Tab C46399A1 For Proper Fit.

Continued on next page



**(MERCURY CONTINUED)**

Motor & Model	Year	Boat Size & Recommendation	Blids.	Dia. & Pitch	ALUMINUM				SUPER-PROP STAINLESS STEEL				
					Nearest Merc. Equiv.	Michigan Part No.	Price	Numeric	Nearest Merc. Equiv.	Michigan Part No.	Price	Numeric	
650 3 Cyl. (2.3:1 Gear) 800-850 4 Cyl. (2.3:1 Gear) 1000-1100 (2.1:1 Gear) 1150-1250 (2.1 Gear) 1350 (1.78:1 Gear) *Use Thrust Hub 65091 *Use Thrust Washer 75282	Thru 71	Cruisers, Houseboats	4	14 x10		**DQ430	\$122.00	**032078					
	72-77	Cruisers, Houseboats	3	13 x11	48-35936A3	**PR151	94.00	**032089					
		20'-24' Bts.	3	13 x13	48-32392A3	**PR153	94.00	**032090					
	Thru 77	19'-22' Bts.	3	13 x15	48-32390A3	**PR155	94.00	**032091					
		19'-22' Bts.	3	13 3/4x15		**PR155C	101.00	**031001		†SSM615-II-C	\$305.00	**033016	
	Thru 77	17'-19' Bts.—All Loads, Skis	3	13 x17	48-32264A3	**PR157	94.00	**032092					
		17'-19' Bts.—All Loads, Skis	3	13 1/4x17		**PR157C	101.00	**031002	48-72764A4	†SSM617-II-C	305.00	**033017	
		16'-17' Bts.—All Loads, Skis	3	13 x19	48-32750A3	**PR159	94.00	**032093					
		16'-17' Bts.—All Loads, Skis	3	13 x19		**PR159C	101.00	**031003	48-72762A4	*SSM619-II-C	305.00	**033018	
		15'-18' Bts.—All Loads, Skis	3	13 x21	48-32746A3	**PR161	94.00	**032094					
		15'-18' Bts.—All Loads, Skis	3	13 x21		**PR161C	101.00	**031004	48-72500A4	*SSM621-II-C	305.00	**033019	
	Mark 78, 78A, 75, 75A, 600	57-60	14'-16' Bts.—All Loads, Skis	3	12 1/2x15	48-65736A1	**PR163	94.00	**032095				
						SMC885	99.00	082035					
	75 HP In Line 4 Cyl. 80 HP In Line 4 Cyl. 90 HP 115 HP In Line 6 Cyl. *Use Thrust Washer 75282	84 Thru	19'-24' Bts.—All Loads	3	13 3/4x15	48-77342A4	*PM315C	100.00	*031041		†SSM615-II-C	305.00	**033016
78-83		17'-20' Bts.—All Loads, Skis	3	13 1/4x17	48-77344A4	*PM317C	100.00	*031042	48-72764A4	†SSM617-II-C	305.00	**033017	
		16'-19' Bts.—All Loads, Skis	3	13 x19	48-77346A4	*PM319C	100.00	*031043	48-72762A4	*SSM619-II-C	305.00	**033018	
78 Thru		15'-18' Bts.—All Loads, Skis	3	12 3/4x21	48-77348A4	*PM321C	100.00	*031044					
78 Thru		15'-18' Bts.—All Loads, Skis	3	13 x21					48-72500A4	*SSM621-II-C	305.00	**033019	
		Light Runabouts—Light Loads	3	12 1/2x23	48-77350A4	*PM323C	100.00	*031045					
1400-1500 (2.1 Gear) In Line 6 Cyl. *Use Thrust Hub 65091 *Use Thrust Washer 75282	Thru 77	Cruisers, Houseboats	3	13 x13	48-32392A3	**PR153	94.00	**032090					
		20'-24' Bts.	3	13 x15	48-32390A3	**PR155	94.00	**032091					
	Thru 77	20'-24' Bts.	3	13 x15		**PR155C	101.00	**031001		†SSM615-II-C	305.00	**033016	
		19'-22' Bts.—All Loads	3	13 x17	48-32264A3	**PR157	94.00	**032092					
	Thru 77	19'-22' Bts.—All Loads	3	13 1/4x17		**PR157C	101.00	**031002	48-72764A4	†SSM617-II-C	305.00	**033017	
		17'-19' Bts.—All Loads, Skis	3	13 x19	48-32750A3	**PR159	94.00	**032093					
	Thru 77	17'-19' Bts.—All Loads, Skis	3	13 x19		**PR159C	101.00	**031003	48-72762A4	*SSM619-II-C	305.00	**033018	
		15'-18' Bts.—All Loads, Skis	3	13 x21	48-32746A3	**PR161	94.00	**032094					
	Thru 77	15'-18' Bts.—All Loads, Skis	3	13 x21		**PR161C	101.00	**031004	48-72500A4	*SSM621-II-C	305.00	**033019	
		16'-17' Bts.—All Loads, Skis	3	13 x23	48-65736A1	**PR163	94.00	**032095					
	87 Thru	30'+(40-45 MPH) Sgl. or Twin	3	15 1/4x17						SSM272C	386.00	033020	
	78 Thru	28'-30'(45-50 MPH) Sgl. or Twin	3	15 x19						SSM292C	386.00	033021	
	78-81	24'-28'(50-55 MPH) Sgl. or Twin	3	14 1/2x21						SSM312C	386.00	033022	
	200 HP V-6 225 HP V-6 Merc Laser XRI220 300 HP V-6 3.4 Litre *Use Thrust Washer 77987	81-82	Cruisers, Houseboats	3	16 x11	48-78112A4	PM211C	114.00	031021				
87 Thru		Cruisers, Houseboats	3	16 x13	48-78114A4	PM213C	114.00	031022					
		83	Cruisers, Houseboats	3	15 1/4x15	48-78116A4	PM215C	114.00	031023				
84 Thru		Cruisers, Houseboats	3	14 1/2x15					48-93272A4	SSM245C	337.00	033002	
		Cruisers, Houseboats	3	14 1/2x17	48-78118A4	PM217C	114.00	031024	48-79794A4	SSM247C	337.00	033003	
84 Thru		Cruisers, Houseboats	3	14 x19	48-78120A4	PM219C	114.00	031025	48-73980A4	SSM249C	337.00	033004	
		Cruisers, Houseboats	3	13 3/4x21	48-78122A4	PM221C	114.00	031026	48-73982A4	SSM251C	337.00	033005	
		19'-21' Bts.—All Loads, Skis	3	13 3/4x21						SSM253C	337.00	033006	
		18'-20' Bts.—All Loads, Skis	3	13 1/2x23	48-78124A4	PM223C	114.00	031027	48-75724A4	SSM253C	337.00	033006	

**THE EDGE™ (High Performance Propellers)**

**STAINLESS STEEL**

Model	Year	Boat Speed (MPH)	Nearest Equiv. Part No.	Mat'l.	No. of Blades	Dia. & Pitch	Part No.	Price	Numeric
150 HP V-6	76 Thru	42-52		S.S.	3	14 1/4x20		\$386.00	033012
		46-56	48-11070-A4	S.S.	3	14 1/4x22	SSM822C	386.00	033013
		51-56	48-11074-A4	S.S.	3	14 1/4x24	SSM824C	386.00	033014
		55-65	48-11078-A4	S.S.	3	14 1/4x26	SSM826C	386.00	033015
200 HP V-6	78 Thru	42-52		S.S.	3	14 1/4x20		386.00	033012
		53-58	48-11070-A4	S.S.	3	14 1/4x22	SSM822C	386.00	033013
		57-63	48-11074-A4	S.S.	3	14 1/4x24	SSM824C	386.00	033014
		62-70	48-11078-A4	S.S.	3	14 1/4x26	SSM826C	386.00	033015

†Requires High Performance Trim Tab C46399A1 For Proper Fit.

**HONDA**

Motor & Model	Year	Boat Size & Recommendation	Blids.	Dia. & Pitch	ALUMINUM			BRONZE		
					Michigan Part No.	Price	Numeric	Michigan Part No.	Price	Numeric
BF 75 BF 100	78 Thru	Sailboats	3	9 1/4x 7	SMC39	\$ 52.00	012102			
		14'-16' Bts.	3	9 x 8	PJ21	39.00	012014			
		14'-16' Bts.—Weedless	3	9 x 8	PJ9	40.00	012006			
		14'-16' Bts.—Light Load	3	9 x 9	PJ19	39.00	012109			
		12'-14' Bts.	3	9 x10	PJ16	39.00	012011			
		12'-14' Bts.—Weedless	3	9 x10	EWC19	50.00	012076			
		Very Lt. Runabouts—Lt. Loads	2	9 1/4x12	AJC418	55.00	012064	AJC417	\$ 79.00	016013



Motor & Model	Year	Boat Size & Recommendation	Blds.	Dia. & Pitch	ALUMINUM			BRONZE		
					Michigan Part No.	Price	Numeric	Michigan Part No.	Price	Numeric
4 HP	60-69	Standard Replacement	2	7 $\frac{3}{8}$ x 6	SA10	\$ 36.00	152030			
3,3.5,3.6,4,4.5	70-73	Standard Replacement	2	7 $\frac{1}{2}$ x 4 $\frac{1}{2}$	G20	30.00	072017			
5-5 $\frac{1}{2}$ -7-7 $\frac{1}{2}$ HP	60-73	Standard Replacement	2	7 $\frac{1}{2}$ x 5 $\frac{1}{2}$	G30	30.00	152014			
		Standard Replacement	3	6 $\frac{3}{4}$ x 6 $\frac{1}{2}$	G45	40.00	152016			
7 $\frac{1}{2}$ HP (Weedless)	60-69	12'-14' Bts.—Light Loads	3	6 x 6	SAC371	52.00	152034			
		Light Runabouts—Light Loads	2	6 x 8	AJC63	38.00	152001			
12-14 HP	60-70	Standard Replacement	3	8 $\frac{1}{4}$ x 8 $\frac{1}{2}$	AMC535	41.00	152003			
25-28 HP	60-70	Standard Replacement	3	9 x 10	PS25	59.00	152020			
35 HP	65	14'-16' Bts.—All Loads, Skis	3	10 $\frac{1}{2}$ x12	SMC715	69.00	152038			
40-45 HP	59-70	17'-19' Bts.—All Loads, Skis	3	10 x 10	SMC635	67.00	152035			
		16'-17' Bts.—All Loads, Skis	3	10 x 11	SMC637	67.00	152036			
		14'-16' Bts.—All Loads, Skis	3	10 x 12 $\frac{1}{2}$	PS40	63.00	152021			
60-75 HP	59-70	20'-24' Bts.—One Engine	3	11 $\frac{1}{2}$ x10	PS74	75.00	152026			
		17'-19' Bts.—All Loads, Skis	3	11 $\frac{1}{2}$ x11	PS73	75.00	152025			
		16'-17' Bts.—All Loads, Skis	3	11 $\frac{1}{2}$ x12	PS71	75.00	152023			
		14'-16' Bts.—All Loads, Skis	3	11 $\frac{1}{2}$ x13	PS72	75.00	152024			

## SPIRIT, SUZUKI

Motor & Model	Year	Boat Size & Recommendation	Blds.	Dia. & Pitch	ALUMINUM			SUPER-PROP STAINLESS STEEL BRONZE		
					Michigan Part No.	Price	Numeric	Michigan Part No.	Price	Numeric
DT 4.5-5 HP	76-83	Standard Replacement	2	8 $\frac{1}{4}$ x 5 $\frac{1}{2}$	PS1	\$ 27.00	062001			
		Sailboats	3	8 x 4	PS2	36.00	062002			
DT 6 HP DT 9.9, 25 HP DT 16 HP DT 20 HP Pin Drive	84 Thru 76-78 76-80 83 Thru	Light Runabouts—Light Loads	3	8 $\frac{3}{4}$ x10	PS7	36.00	062005			
		14'-16' Bts.—All Loads	3	8 $\frac{3}{4}$ x 9	PS6	36.00	062004			
		16'-17' Bts.—All Loads	3	9 x 8	PS5	36.00	062003			
DT 25 HP Commercial	83 Thru	17'-19' Bts.—All Loads	3	10 $\frac{1}{4}$ x10	PR333	78.00	032096			
		14'-16' Bts.—All Loads	3	10 $\frac{1}{4}$ x12	PR337	78.00	032098			
		14'-16' Bts.—Light Loads	3	10 $\frac{1}{4}$ x13	PR339	78.00	032099			
		12'-14' Bts.—All Loads	3	10 $\frac{1}{4}$ x15	PR343	78.00	032100			
		12'-14' Bts.—Light Loads	3	10 $\frac{3}{4}$ x17	PR345	78.00	032101			
DT 50 HP	77-78	15'-18' Bts.—All Loads, Skis	3	13 x 11	PJ58	79.00	012036			
		16'-17' Bts.—All Loads, Skis	3	12 $\frac{1}{2}$ x13	PJ59	79.00	012037			
		14'-16' Bts.—Light Loads	3	12 $\frac{1}{4}$ x15	PJ60	79.00	012038	SS0315C	\$309.00	013010
		13'-15' Bts.—Light Loads	3	11 $\frac{3}{4}$ x17	PJ61	79.00	012039			
		12'-14' Bts.—Light Loads	3	11 $\frac{1}{2}$ x19	PJ62	79.00	012040			
DT 40 HP DT 50 HP & Commercial	80 Thru 79-84	17'-19' Bts.—Light Loads	3	12 x 11	PS527	96.00	062011	SMC439	136.00	036009
		16'-18' Bts.—Light Loads	3	11 $\frac{3}{4}$ x12	PS524	96.00	062010	SMC438	136.00	036008
		15'-17' Bts.—Light Loads	3	11 $\frac{1}{2}$ x13	PS521	96.00	062009	SMC437	136.00	036007
		14'-16' Bts.—Light Loads	3	11 $\frac{1}{4}$ x14	PS518	96.00	062008	SMC436	136.00	036006
DT 55 HP DT 60 HP DT 65 HP (Use 1" more pitch for 65 HP)	83-84 79 Thru	13'-15' Bts.—Light Loads	3	11 x 15	PS515	96.00	062007	SMC435	136.00	036005
		12'-14' Bts.—Light Loads	3	10 $\frac{3}{4}$ x16	PS513	96.00	062006	SMC434	136.00	036004
DT 75 HP DT 85 HP	84 Thru 79-82	17'-19' Bts.—All Loads, Skis	3	13 $\frac{3}{4}$ x15		100.00	*061001	†SS0515-II-C	294.00	013011
		15'-18' Bts.—All Loads, Skis	3	13 $\frac{1}{4}$ x17		100.00	*061002	†SS0517-II-C	294.00	013012
DT 115-140 HP	84 Thru 81-82 84 Thru	14'-16' Bts.—All Loads, Skis	3	13 x 19		100.00	*061003	†SS0519-II-C	294.00	013013
		14'-16' Bts.—Light Loads	3	13 x 21		100.00	*061004	†SS0521-II-C	294.00	013014
		12'-14' Bts.—Light Loads	3	12 $\frac{1}{2}$ x23		100.00	*061005			

NOTE: All Engines Require †57635-95503 Stopper (U-Type) †57633-95500 Spacer (U-Type) †09159-18004 Nut (U-Type) †57635-95300 Washer (U-Type)  
†Supplied with Engine \*If currently using uncupped prop, use cupped prop having 2" less pitch. Boats with power trim use same pitch.

**Cupped or uncupped?** For extra speed from your prop, order it with cupped blades. Made for light, fast hulls, the cupped design increases speed on fast bottom boats, eliminates vibration and gives you acceleration like you never had before. Most of the props listed in this catalog can be purchased this way.



# VOLVO-PENTA, ARCHIMEDES

Motor & Model	Year	Boat Size & Recommendation	Blids.	Dia. & Pitch	ALUMINUM			SUPER-PROP STAINLESS STEEL		
					Michigan Part No.	Price	Numeric	Michigan Part No.	Price	Numeric
450-550-600-700 All Years	All Years	Cruisers, Houseboats	4	14 x10	DQ320	\$124.00	012074			
		Cruisers, Houseboats	3	14 x11	PJ87	83.00	012047			
		17'-19' Bts.—All Loads, Skis	4	14 x12	DQ328	124.00	012075			
		16'-17' Bts.—All Loads, Skis	3	13¾x15	PJ80	83.00	012049			
		16'-17' Bts.—All Loads, Skis	3	13¾x15	*PJ89C	92.00	011002	SSO515-II-C	\$294.00	013011
		14'-16' Bts.—All Loads, Skis	3	13¼x17	PJ81	83.00	012050			
		14'-16' Bts.—All Loads, Skis	3	13¼x17	*PJ90C	92.00	011003	SSO517-II-C	294.00	013012
		12'-14' Bts.—Heavy Loads	3	13 x19	PJ82	83.00	012051			
		12'-14' Bts.—Heavy Loads	3	13 x19	*PJ91C	92.00	011004	SSO519-II-C	294.00	013013
		Light Runabouts—Light Loads	3	13 x21	*PJ83C	92.00	011005	SSO521-II-C	294.00	013014
		60-90-140-200-250-252 All Years	All Years	Sailboats	3	9¼x 7	SMC39	52.00	012102	
16'-17' Bts.—All Loads, Skis	4			9 x 9	AMC448	71.00	012072			
Weedless	3			9 x10	EWC19	50.00	012076			
Standard Replacement	3			9 x10	PJ16	39.00	012011			
16'-17' Bts.—All Loads, Skis	3			8¾x11	PR20	50.00	012079			
14'-16' Bts.—All Loads, Skis	3			8¾x12	PR22	50.00	012080			
14'-16' Bts.—Light Loads	3			8¾x13	PR24	50.00	012081			
12'-14' Bts.—Light Loads	3			8¾x14	PR26	50.00	012082			
Light Runabouts—Light Loads	2			9¼x12	AJC418	55.00	012064	AJC417	79.00	016013

\*If currently using uncupped prop, use cupped prop having 2" less pitch. Boats with power trim use same pitch.

# WARD'S SEA KING

Motor & Model	Year	Boat Size & Recommendation	Blids.	Dia. & Pitch	ALUMINUM			BRONZE		
					Michigan Part No.	Price	Numeric	Michigan Part No.	Price	Numeric
2,3½,4.5-5 HP	70-78	Standard Replacement	2	7 x 4½	C15	\$ 36.00	152011			
3½ HP	64-69	Standard Replacement	2	7½x 4½	G20	30.00	072017			
5-6 HP	64-70	Standard Replacement	2	7½x 7	GC54	40.00	072018			
6 HP	71-80	Standard Replacement	2	8 x 5	PC9	40.00	072022			
7-7.5 HP	70-78	Standard Replacement	2	7 x 5	C18	36.00	152012			
7½ HP Full Shift	77-78	Standard Replacement	3	8¼x 8	PJ11	34.00	012008			
8-9-9.2 HP	64-69	Standard Replacement	2	8 x 8	GC55	40.00	072019			
9.6-9.9-10 HP	70 Thru	Standard Replacement	2	8¼x 8¼	PC12	40.00	072024			
		14'-16' Bts.—All Loads, Skis	2	8¼x 8	PC10	40.00	072023			
		Light Runabouts—Light Loads	2	8 x 8¾	PC14	40.00	072025			
15 HP	74-82	Standard Replacement	3	8½x 8¼	PC20	43.00	072026			
20-25 HP Splined Shaft	68-78	Standard Replacement	3	8½x 8½	AMC490	59.00	152002			
		14'-16' Bts.—All Loads, Skis	3	8½x 8	PR4	61.00	072027			
		12'-14' Bts.—Light Loads	3	8½x10	PR8	61.00	072028			
		12'-14' Bts.—Light Loads	3	8½x11	PR10	61.00	072029			
45-50 HP	64-65	16'-17' Bts.—All Loads, Skis	3	10½x12	SMC715	69.00	152038			
		14'-16' Bts.—All Loads, Skis	3	10½x13	SMC713	69.00	152037			
35-45-50-55 HP Splined Shaft	66 Thru	Cruisers, Houseboats, Sailboats	3	10¾x10	AMC308	65.00	072014			
		17'-19' Bts.—All Loads, Skis	3	10¼x11	PR130	67.00	072035			
		16'-17' Bts.—All Loads, Skis	3	10¼x12	PR132	67.00	072036			
		14'-16' Bts.—All Loads, Skis	3	10¼x13	PR134	67.00	072037			
		14'-16' Bts.—Light Loads	3	10¼x14	PR136	67.00	072038			
80 HP	64-69	Light Runabouts—Light Loads	3	10¼x15	PR138	67.00	072039			
80 HP	64-69	Cruisers, Houseboats	3	13 x 8	PJ51	88.00	012034			
		16'-17' Bts.—All Loads, Skis	3	12½x14	PJ50	70.00	012033			

# YAMAHA

Motor & Model	Year	Boat Size & Recommendation	Blids.	Dia. & Pitch	Nearest Yamaha Equiv.	ALUMINUM			SUPER-PROP STAINLESS STEEL		
						Michigan Part No.	Price	Numeric	Nearest Yamaha Equiv.	Michigan Part No.	Price
8 HP	76-83	20'-24' Bts.—Sailboats	3	8¼x 6½	48-82763	SMC12	\$ 48.00	012100			
		14'-16' Bts.—All Loads, Skis	3	8¼x 8	48-82764	PJ11	34.00	012008			
		14'-16' Bts.—Light Loads	3	8¼x 9	48-82766	SMC18	42.00	012101			
15A & W15 HP	76-83	Houseboats, Sailboats	3	9¼x 7	48-82767	SMC39	52.00	012102			
		12'-14' Bts.—Heavy Loads	3	9 x10	48-82768	PJ16	39.00	012011			
20 HP	76-78	12'-14' Bts.—Light Loads	3	9¼x11	48-82769	PJ18	40.00	012013			
		25 HP	77-79	12'-14' Bts.—All Loads, Skis	3	9¼x12	48-82770	PJ15	40.00	012010	

Continued on next page



**(YAMAHA CONTINUED)**

Motor & Model	Year	Boat Size & Recommendation	Blids.	Dia. & Pitch	ALUMINUM				SUPER-PROP STAINLESS STEEL			
					Nearest Yamaha Equiv.	Michigan Part No.	Price	Numeric	Nearest Yamaha Equiv.	Michigan Part No.	Price	Numeric
25 HP	80 Thru	16'-18' Bts.—All Loads, Skis	3	9 $\frac{1}{8}$ x 9	664-45941-01-EL	PM39	\$ 61.00	022001				
28 HP	76-78	14'-17' Bts.—All Loads, Skis	3	9 $\frac{1}{8}$ x10 $\frac{1}{2}$	664-45945-00-EL	PM40	61.00	022002				
30 HP Flow-Thru Exhaust	79 Thru	13'-16' Bts.—Light Loads	3	9 $\frac{1}{8}$ x12		PM42	61.00	022003				
W40 HP For Non "Thru-Prop" Exhaust	77-83	18'-20' Bts.—All Loads	3	11 $\frac{3}{4}$ x 8 $\frac{3}{4}$	48-83573	PM62	76.00	022006				
		16'-17' Bts.—All Loads, Skis	3	11 $\frac{3}{4}$ x10	48-83552	PM61	76.00	022005				
		15'-17' Bts.—Light Loads	3	11 $\frac{1}{2}$ x12	48-83535	PM60	76.00	022004				
40 HP	79-83	19'-22' Bts.—All Loads	3	11 $\frac{1}{4}$ x10	48-73132A4	PM600C	92.00	031015				
W48 HP	All Yrs.	15'-18' Bts.—All Loads, Skis	3	10 $\frac{5}{8}$ x12	48-73134A4	PM612C	92.00	031016				
60 HP	77-83	15'-18' Bts.—All Loads, Skis	3	10 $\frac{1}{4}$ x12					48-79792A4	SSM212C	\$267.00	033001
70 HP Thru-Hub Exhaust	78-83	16'-17' Bts.—All Loads, Skis	3	10 $\frac{3}{8}$ x13	48-73136A4	PM613C	92.00	031017				
		14'-16' Bts.—Light Loads	3	10 $\frac{1}{4}$ x14	48-73138A4	PM614C	92.00	031018				
		13'-15' Bts.—Light Loads	3	10 $\frac{1}{8}$ x15	48-73140A4	PM615C	92.00	031019				
		12'-15' Bts.—Light Loads	3	10 x17	48-73144A4	PM617C	92.00	031020				
40-50 HP	84 Thru	19'-22' Bts.—All Loads	3	12 $\frac{1}{4}$ x10		PM530	92.00	032045				
55-60 HP	76-81	17'-19' Bts.—All Loads, Skis	3	12 x11	663-45947-01-EL	PM527	92.00	032044			SMC439	136.00 036009
		15'-18' Bts.—All Loads, Skis	3	11 $\frac{3}{4}$ x12		PM524	92.00	032043			SMC438	136.00 036008
		16'-17' Bts.—All Loads, Skis	3	11 $\frac{1}{2}$ x13	663-45945-01-EL	PM521	92.00	032042			SMC437	136.00 036007
		14'-16' Bts.—Light Loads	3	11 $\frac{1}{4}$ x14	663-45958-01-EL	PM518	92.00	032041			SMC436	136.00 036006
		13'-15' Bts.—Light Loads	3	11 x15	663-45943-01-EL	PM515	92.00	032040			SMC435	136.00 036005
		12'-14' Bts.—Light Loads	3	10 $\frac{3}{4}$ x16	663-45949-01-EL	PM513	92.00	032039			SMC434	136.00 036004
80 HP	1977	20'-24' Bts.	3	13 x13	48-58826	PR153	94.00	032090				
		19'-22' Bts.—All Loads	3	13 x15	48-32390	PR155	94.00	032091				
		19'-22' Bts.—All Loads, Skis	3	13 $\frac{3}{4}$ x15		PR155C	101.00	031001			SSM615-II-C	305.00 033016
		17'-19' Bts.—All Loads, Skis	3	13 x17	48-65022	PR157	94.00	032092				
		17'-19' Bts.—All Loads, Skis	3	13 x17		PR157C	101.00	031002				
		17'-19' Bts.—All Loads, Skis	3	13 $\frac{1}{4}$ x17					48-7276A4	SSM617-II-C	305.00	033017
		15'-18' Bts.—All Loads, Skis	3	13 x19	48-65024	PR159	94.00	032093				
		15'-18' Bts.—All Loads, Skis	3	13 x19		PR159C	101.00	031003	48-72762A4	SSM619-II-C	305.00	033018
		16'-17' Bts.—All Loads, Skis	3	13 x21	48-62780	PR161	94.00	032094				
		16'-17' Bts.—All Loads, Skis	3	13 x21		PR161C	101.00	031004				
		14'-16' Bts.—All Loads, Skis	3	13 x23	48-65736	PR163	94.00	032095	48-72500A4	SSM621-II-C	305.00	033019
80-90-115 140 HP	78-83 78-79	20'-24' Bts.—All Loads, Skis	3	13 $\frac{3}{4}$ x15	48-77342A4	PM315C	100.00	031041			SSM615-II-C	305.00 033016
		17'-19' Bts.—All Loads, Skis	3	13 $\frac{1}{4}$ x17	48-77344A4	PM317C	100.00	031042	48-72764A4	SSM617-II-C	305.00	033017
		16'-18' Bts.—All Loads, Skis	3	13 x19	48-77346A4	PM319C	100.00	031043	48-72762A4	SSM619-II-C	305.00	033018
		15'-18' Bts.—All Loads, Skis	3	12 $\frac{3}{4}$ x21	48-77348A4	PM321C	100.00	031044	48-72500A4	SSM621-II-C	305.00	033019
		14'-16' Bts.—All Loads, Skis	3	12 $\frac{1}{2}$ x23	48-77350A4	PM323C	100.00	031045				
70-90-115 HP	84 Thru	20'-24' Bts.—All Loads, Skis	3	13 $\frac{3}{4}$ x15	6E5-45947-00-EL	PY315-C	100.00	101001	688-45978-60-98	SSY615-II-C	305.00	103025
		17'-19' Bts.—All Loads, Skis	3	13 $\frac{1}{4}$ x17	6E5-45945-00-EL	PY317-C	100.00	101003	688-45930-60-98	SSY617-II-C	305.00	103026
		16'-18' Bts.—All Loads, Skis	3	13 x19	6E5-45941-00-EL	PY319-C	100.00	101005	688-45970-01-98	SSY619-II-C	305.00	103027
		15'-18' Bts.—All Loads, Skis	3	12 $\frac{3}{4}$ x21	6E5-45943-00-EL	PY321-C	100.00	101007	688-45972-01-98	SSY621-II-C	305.00	103028
		14'-16' Bts.—All Loads, Skis	3	12 $\frac{1}{2}$ x23		PY323-C	100.00	101009				
150-200 HP 175 HP V-6	79-83 78-79	Cruisers, Houseboats	3	16 x11	48-78112A4	PM211C	114.00	031021				
		Cruisers, Houseboats	3	16 x13	48-78114A4	PM213C	114.00	031022				
		Cruisers, Houseboats	3	15 $\frac{1}{4}$ x15	48-78116A4	PM215C	114.00	031023				
		Cruisers, Houseboats	3	14 $\frac{1}{2}$ x15					48-93272A4	SSM245C	337.00	033002
		Cruisers, Houseboats	3	14 $\frac{1}{2}$ x17	48-78118A4	PM217C	114.00	031024	48-79794A4	SSM247C	337.00	033003
		Cruisers, Houseboats	3	14 x19	48-78120A4	PM219C	114.00	031025	48-73980A4	SSM249C	337.00	033004
		19'-21' Bts.—All Loads, Skis	3	13 $\frac{3}{4}$ x21	48-78122A4	PM221C	114.00	031026	48-73982A4	SSM251C	337.00	033005
		18'-20' Bts.—All Loads, Skis	3	13 $\frac{1}{2}$ x23	48-78124A4	PM223C	114.00	031027	48-75724A4	SSM253C	337.00	033006
V-6 150 HP	84 Thru	Cruisers, Houseboats	3	15 $\frac{1}{4}$ x15	6G5-45941-00-EL	PY415C	114.00	101010			SSY715C	337.00 103016
175 HP	84 Thru	Cruisers, Houseboats	3	14 $\frac{1}{2}$ x17	6G5-45947-00-EL	PY417C	114.00	101011	6G5-45978-00-98	SSY717C	337.00	103018
200 HP	84 Thru	Cruisers, Houseboats	3	14 x19	6G5-45945-00-EL	PY419C	114.00	101012	6G5-45974-00-96	SSY719C	337.00	103020
V-6 Special	84-85	Cruisers, Houseboats	3	14 x19	6G5-45943-00-EL	PY421C	114.00	101013			SSY721C	337.00 103022
PRO V	86 Thru	19'-21' Bts.—All Loads, Skis	3	13 $\frac{3}{4}$ x21	6G5-45943-00-EL	PY421C	114.00	101013			SSY721C	337.00 103022
EXCEL		18'-20' Bts.—All Loads, Skis	3	13 $\frac{1}{2}$ x23	6G5-45949-00-EL	PY423C	114.00	101014	6G5-45976-00-78	SSY723C	337.00	103024

**("Heavy-Duty Special" Hard to Plane Boats)**

Motor & Model	Year	Boat Size (Speed MPH)	Mat'l.	No. of Blades	Dia. & Pitch	Part No.	Price	Numeric
150 HP V-6	84 Thru	32'+ Twin (35-45)	S.S.	3	15 $\frac{1}{4}$ x17 (LH)		\$386.00	103001
200 HP V-6 (Counter-rotating)			S.S.	3	15 $\frac{1}{4}$ x17 (RH)		386.00	103002
		24'-28' Twin (40-48)	S.S.	3	15 x19 (LH)		386.00	103003
			S.S.	3	15 x19 (RH)		386.00	103004
		22'-24' Twin (45-53)	S.S.	3	14 $\frac{1}{2}$ x21 (LH)		386.00	103005
			S.S.	3	14 $\frac{1}{2}$ x21 (RH)		386.00	103006

**THE EDGE™ (High Performance Propellers)**

Model	Year	Boat Speed (MPH)	Nearest Equiv. Part No.	Mat'l.	No. of Blades	Dia. & Pitch	Part No.	Price	Numeric
V-6 Outboards	84 Thru	42-52	6E5-45970-10-00	S.S.	3	14 $\frac{1}{4}$ x20		\$386.00	103008
		45-55	6E5-45976-10-00	S.S.	3	14 $\frac{1}{4}$ x22	SSY722C 	386.00	103010
		50-60	6E5-45972-10-00	S.S.	3	14 $\frac{1}{4}$ x24	SSY724C 	386.00	103012
		54-66	6E5-45978-10-00	S.S.	3	14 $\frac{1}{4}$ x26	SSY726C 	386.00	103014
V-6 Special	84 Thru	44-54	6E5-45970-10-00	S.S.	3	14 $\frac{1}{4}$ x20		386.00	103008
		52-63	6E5-45976-10-00	S.S.	3	14 $\frac{1}{4}$ x22	SSY722C 	386.00	103010
		57-68	6E5-45972-10-00	S.S.	3	14 $\frac{1}{4}$ x24	SSY724C 	386.00	103012
		62-74	6E5-45978-10-00	S.S.	3	14 $\frac{1}{4}$ x26	SSY726C 	386.00	103014



# MISCELLANEOUS

							ALUMINUM			BRONZE					
Motor & Model	Year	Boat Size & Recommendation		Bids.	Dia. & Pitch		Michigan Part No.	Price	Numeric	Michigan Part No.	Price	Numeric			
<b>BEARCAT (HOMELITE)</b>															
55-85 HP	62-73	17'-19' Bts.—All Loads, Skis		3	11½x10		<b>PS74</b>	\$ 75.00	<b>152026</b>						
(Use Cupped Version for 85 HP Model at \$8.50 Net Extra.)		16'-17' Bts.—All Loads, Skis		3	11½x11		<b>PS73</b>	75.00	<b>152025</b>						
		14'-16' Bts.—All Loads, Skis		3	11½x12		<b>PS71</b>	75.00	<b>152023</b>						
		14'-16' Bts.—Light Loads		3	11½x13		<b>PS72</b>	75.00	<b>152024</b>						
Motor & Model	Year	Part No.	Bids.	Dia. & Pitch	Model	Price	Numeric								
<b>CHAMPION</b>								<b>MERCURY</b>							
Single & Twin	39-42	<b>P51</b>	2	7½x 6½	Al.	\$ 30.00	<b>152018</b>	3½-5 HP	49-55	<b>K70</b>	2	6¾x 6½	Al.	\$ 38.00	<b>032081</b>
<b>CLINTON</b>								6 HP	55-60	<b>K74</b>	2	7¼x 7	Al.	38.00	<b>032082</b>
3-3½-4-5 HP	60-78	<b>C15</b>	2	7 x 4½	Al.	36.00	<b>152011</b>	7½ HP Mark 7	47-55	<b>K50</b>	2	7¾x 8	Al.	38.00	<b>032080</b>
7-7.5 HP	60-78	<b>C18</b>	2	7 x 5	Al.	36.00	<b>152012</b>	10 HP KE 7	47-52	<b>K40</b>	3	7½x 9	Al.	49.00	<b>032079</b>
7.5,9.9 HP Full Shift	73-78	<b>PJ11</b>	3	8¼x 8	Al.	34.00	<b>012008</b>	Mark 20-25 KH 7	52-58	<b>AMC503</b>	3	9 x 9	Al.	87.00	<b>032073</b>
<b>ELGIN</b>								<b>WESTBEND-WIZARD (CHRYSLER)</b>							
5-5½-6 HP	47-55	<b>G40</b>	2	7½x 7½	Al.	38.00	<b>152015</b>	5-5½-6 HP	47-48	<b>G40</b>	2	7½x 7½	Al.	38.00	<b>152015</b>
5½ HP	56-59	<b>GC54</b>	2	7½x 7	Al.	40.00	<b>072018</b>	7½-8 HP	49-55	<b>G50</b>	2	7½x 8½	Al.	40.00	<b>152017</b>
7½ HP	49-55	<b>G50</b>	2	7½x 8½	Al.	40.00	<b>152017</b>								
7½ HP	56-59	<b>GC55</b>	2	8 x 8	Al.	40.00	<b>072019</b>								
<b>EVINRUDE-JOHNSON-GALE</b>															
7½ HP	50-58	<b>AM416</b>	3	8 x 8	Al.	38.00	<b>012066</b>								
<b>MUNCIE</b>															
1.2 and 1.5 HP	47-73	<b>E40</b>	2	6 x 5	Al.	39.00	<b>152013</b>								

## STERN DRIVE PROPS

Stern drives require special attention when it comes to propping because there are so many variables such as boat length, hull displacement, condition of use, etc. This selector is

your starting point but your Michigan Wheel dealer is particularly well qualified to assist you in choosing a propeller for achieving optimum operating results.

## OMC COBRA™ / MODEL 400

Motor-Model-Ratio	Year	Boat Size & Speed (MPH)	OMC Equiv.	Michigan Part No.	Mat'l.	Bids.	Dia. & Pitch	Price	Numeric
2.3 Litre (120 HP) 400 1.71:1		Workboat (6-16)	382761	<b>PJ87</b>	Alum.	3	14 x11	\$ 83.00	<b>012047</b>
2.5 Litre (120 HP) 400 (In Line 4) 1.71:1	78-84	Houseboats, Lt. Cruisers (14-26)	391668	<b>PJ88C</b>	Alum.	3	14 x13	92.00	<b>011001</b>
3.0 Litre (140 HP) 400 1.71:1		19'-22' (24-32)	391198	<b>PJ89C</b>	Alum.	3	13¾x15	92.00	<b>011002</b>
3.0 Litre (140 HP) 400 (In Line 4) 1.71:1	78-84	19'-22' (24-32)	389949	<b>SS0515-II-C</b>	<b>S.S.</b>	3	13¾x15	294.00	<b>013011</b>
2.5 Litre (120 HP) Cobra (In Line 4) 1.71:1	85 Thru	17'-20' (30-40)	391199	<b>PJ90C</b>	Alum.	3	13¼x17	92.00	<b>011003</b>
3.0 Litre (140 HP) Cobra (In Line 4) 1.71:1	85 Thru	17'-20' (30-40)	389948	<b>SS0517-II-C</b>	<b>S.S.</b>	3	13¼x17	294.00	<b>013012</b>
(All Thru-Hub Exhaust)		16'-19' (34-42)	390896	<b>PJ91C</b>	Alum.	3	13 x19	92.00	<b>011004</b>
		16'-19' (34-42)	389510	<b>SS0519-II-C</b>	<b>S.S.</b>	3	13 x19	294.00	<b>013013</b>
		15'-18' (38-46)	389788	<b>PJ83C</b>	Alum.	3	13 x21	92.00	<b>011005</b>
		15'-18' (38-46)	389512	<b>SS0521-II-C</b>	<b>S.S.</b>	3	13 x21	294.00	<b>013014</b>

## OMC COBRA™ / MODEL 800

Motor-Model-Ratio	Year	Boat Size & Speed (MPH)	OMC Equiv.	Michigan Part No.	Mat'l.	Bids.	Dia. & Pitch	Price	Numeric
3.8 Litre (170 HP) 800 V-6 1.77:1	80-84	Non-Plane Hvy. Cruisers (0-20)		<b>PJ199C</b>	Alum.	3	15½x10	\$151.00	<b>011015</b>
3.8 Litre (185 HP) 800 V-6 1.77:1	80-84	Non-Plane Hvy. Cruisers (7-23)	387158	<b>PJ200</b>	Alum.	3	15¾x13	108.00	<b>012059</b>
5.0 Litre (200 HP) 800 V-8 1.50:1	80-84	Non-Plane Hvy. Cruisers (7-23)	391536	<b>PJ200C</b>	Alum.	3	15¾x13	108.00	<b>011016</b>
5.0 Litre (230 HP) 800 V-8 1.50:1	80-84	22'-26' (22-32)	391535	<b>PJ201C</b>	Alum.	3	15½x15	108.00	<b>011006</b>
5.7 Litre (260 HP) 800 V-8 1.41:1	80-84	19'-24' (28-35)	389925	<b>SS0645C</b>	<b>S.S.</b>	3	14½x15	346.00	<b>013001</b>
4.3 Litre (175 HP) Cobra V-6 1.68:1	85 Thru	18'-24' (30-39)	391200	<b>PJ202C</b>	Alum.	3	15 x17	108.00	<b>011007</b>
4.3 Litre (205 HP) Cobra V-6 1.68:1	85 Thru	18'-24' (30-39)	391290	<b>SS0647C</b>	<b>S.S.</b>	3	14½x17	346.00	<b>013002</b>
5.0 Litre (230 HP) Cobra V-8 1.50:1	85 Thru	17'-20' (36-44)	391201	<b>PJ203C</b>	Alum.	3	14½x19	108.00	<b>011008</b>
7.5 Litre (335 HP) Cobra V-8 1.43:1		17'-20' (36-44)	389924	<b>SS0649C</b>	<b>S.S.</b>	3	14 x19	346.00	<b>013003</b>
(All Thru-Hub Exhaust)		16'-19' (40-49)	391202	<b>PJ204C</b>	Alum.	3	14½x21	108.00	<b>011009</b>
Use Thru Washer 333592		16'-19' (40-49)	389923	<b>SS0651C</b>	<b>S.S.</b>	3	13¾x21	346.00	<b>013004</b>
		15'-20' (45-56)	391203	<b>PJ205C</b>	Alum.	3	14½x19	108.00	<b>011010</b>
		15'-20' (45-56)	389019	<b>SS0653C</b>	<b>S.S.</b>	3	13½x23	346.00	<b>013005</b>

Continued on next page



**(OMC COBRA™ / MODEL 800 CONTINUED)**

Motor-Model-Ratio	Year	Boat Size & Speed (MPH)	OMC Equiv.	Michigan Part No.	Mat'l.	Blds.	Dia. & Pitch	Price	Numeric
3.8 Litre (170 HP) 800 V-6 1.77:1	80-84	Heavy Cruisers (22-30)	387158	<b>PJ200C</b>	Alum.	3	15¾x13	\$108.00	<b>011016</b>
3.8 Litre (185 HP) 800 V-6 1.77:1	80-84	24'-28' (26-36)	391535	<b>PJ201C</b>	Alum.	3	15½x15	108.00	<b>011006</b>
5.0 Litre (200 HP) 800 V-8 1.50:1	80-84	20'-27' (32-38)	289925	<b>SS0645C</b>	<b>S.S.</b>	3	14½x15	346.00	<b>013001</b>
5.7 Litre (260 HP) 800 V-8 1.50:1	80-84	20'-27' (34-44)	391200	<b>PJ202C</b>	Alum.	3	15 x17	108.00	<b>011007</b>
4.3 Litre (175 HP) Cobra V-6 1.68:1	85 Thru	20'-27' (34-44)	391290	<b>SS0647C</b>	<b>S.S.</b>	3	14½x17	346.00	<b>013002</b>
4.3 Litre (205 HP) Cobra V-6 1.68:1	85 Thru	17'-22' (39-50)	391201	<b>PJ203C</b>	Alum.	3	14½x19	108.00	<b>011008</b>
5.0 Litre (230 HP) Cobra V-8 1.50:1	85 Thru	17'-22' (39-50)	389924	<b>SS0649C</b>	<b>S.S.</b>	3	14 x19	346.00	<b>013003</b>
7.5 Litre (335 HP) Cobra V-8 1.43:1 (All Thru-Hub Exhaust)		16'-20' (44-57)	391202	<b>PJ204C</b>	Alum.	3	14½x21	108.00	<b>011009</b>
		16'-20' (44-57)	389923	<b>SS0651C</b>	<b>S.S.</b>	3	13¾x21	346.00	<b>013004</b>
		High Perf. (48-62)	391203	<b>PJ205C</b>	Alum.	3	14½x23	108.00	<b>011010</b>
		High Perf. (48-62)	389019	<b>SS0653C</b>	<b>S.S.</b>	3	13½x23	346.00	<b>013005</b>
5.7 Litre (260 HP) 800 V-8 1.41:1	78-84	Heavy Cruisers (25-32)	391536	<b>PJ200C</b>	Alum.	3	15¾x13	108.00	<b>011016</b>
5.7 Litre (200 HP) Cobra V-8 1.4:1	85 Thru	22'-28' (30-37)	391535	<b>PJ201C</b>	Alum.	3	15½x15	108.00	<b>011006</b>
		19'-26' (33-39)	389925	<b>SS0645C</b>	<b>S.S.</b>	3	14½x15	346.00	<b>013001</b>
		19'-26' (35-46)	391200	<b>PJ202C</b>	Alum.	3	15 x17	108.00	<b>011007</b>
		19'-26' (35-46)	391290	<b>SS0647C</b>	<b>S.S.</b>	3	14½x17	346.00	<b>013002</b>
		18'-24' (40-52)	391201	<b>PJ203C</b>	Alum.	3	14½x19	108.00	<b>011008</b>
		18'-24' (40-52)	389924	<b>SS0649C</b>	<b>S.S.</b>	3	14 x19	346.00	<b>013003</b>
		17'-22' (46-60)	391202	<b>PJ204C</b>	Alum.	3	14½x21	108.00	<b>011009</b>
		17'-22' (46-60)	389923	<b>SS0651C</b>	<b>S.S.</b>	3	13¾x21	346.00	<b>013004</b>
		High Perf. (51-66)	391203	<b>PJ205C</b>	Alum.	3	14½x23	108.00	<b>011010</b>
		High Perf. (51-66)	389019	<b>SS0653C</b>	<b>S.S.</b>	3	13½x23	346.00	<b>013005</b>
"Heavy-Duty Special" Hard to Plane Boats Thru-Hub Exhaust (260 HP maximum)		32'+ Twin (38-47)		<b>SS0817C</b>	<b>S.S.</b>	3	15¼x17 (RH)	386.00	<b>013015</b>
					<b>S.S.</b>	3	15¼x17 (LH)		<b>013019</b>
		24'-28' Single (38-47)		<b>SS0817C</b>	<b>S.S.</b>	3	15¼x17 (RH)	386.00	<b>013015</b>
		24'-28' Twin (44-53)		<b>SS0819C</b>	<b>S.S.</b>	3	15 x19 (RH)	386.00	<b>013016</b>
					<b>S.S.</b>	3	15 x19 (LH)		<b>013021</b>
		22'-24' Single (44-53)		<b>SS0819C</b>	<b>S.S.</b>	3	15 x19 (RH)	386.00	<b>013016</b>
		24'-28' Twin (50-58)		<b>SS0821C</b>	<b>S.S.</b>	3	14½x21 (RH)	386.00	<b>013017</b>
					<b>S.S.</b>	3	14½x21 (LH)		<b>013023</b>
		20'-22' Single (50-58)		<b>SS0821C</b>	<b>S.S.</b>	3	14½x21	386.00	<b>013017</b>

**THE EDGE™ (High Performance Propellers) OMC Model 800 & Cobra™**

**STAINLESS STEEL**

Model	Year	Boat Speed (MPH)	Nearest Equiv. Part No.	Mat'l.	No. of Blades	Dia. & Pitch	Part No.	Price	Numeric
V-6	80 Thru	40-49	394753	<b>S.S.</b>	3	14¼x20		\$390.00	<b>013006</b>
3.8, 4.3 Litre 170, 175, 185, 205 Sterndrives		45-56	394754	<b>S.S.</b>	3	14¼x22	<b>SS0922C</b>	390.00	<b>013007</b>
		50-60	394755	<b>S.S.</b>	3	14¼x24	<b>SS0924C</b>	390.00	<b>013008</b>
V-8	78 Thru	45-57	394753	<b>S.S.</b>	3	14¼x20		390.00	<b>013006</b>
5.0 Litre 185, 200, 225, 230 Sterndrives		48-62	394754	<b>S.S.</b>	3	14¼x22	<b>SS0922C</b>	390.00	<b>013007</b>
		52-66	394755	<b>S.S.</b>	3	14¼x24	<b>SS0924C</b>	390.00	<b>013008</b>
		65+	394756	<b>S.S.</b>	3	14¼x26	<b>SS0926C</b>	390.00	<b>013009</b>
V-8	78 Thru	46-60	394753	<b>S.S.</b>	3	14¼x20		390.00	<b>013006</b>
5.7 Litre 260 Sterndrives		51-66	394754	<b>S.S.</b>	3	14¼x22	<b>SS0922C</b>	390.00	<b>013007</b>
		65+	394755	<b>S.S.</b>	3	14¼x24	<b>SS0924C</b>	390.00	<b>013008</b>

**OMC SEA DRIVE ('82 Thru)**

Motor-Model-Ratio	Year	Boat Size & Speed (MPH)	OMC Equiv.	Michigan Part No.	Mat'l.	Blds.	Dia. & Pitch	Price	Numeric
2.5 Litre (150 HP) 1.86:1 V-6	82 Thru	Barges, Houseboats (10-25)	391536	<b>PJ200C</b>	Alum.	3	15¾x13	\$108.00	<b>011016</b>
2.6 Litre (205 HP) 1.86:1 V-6	82 Thru	32'-36' Twin (24-34)	391535	<b>PJ201C</b>	Alum.	3	15½x15	108.00	<b>011006</b>
2.7 Litre (225 HP) 2:1 V-6		32'-36' Twin (27-36)	389925	<b>SS0645C</b>	<b>S.S.</b>	3	14½x15	346.00	<b>013001</b>
		24'-27' Single (30-40)	391200	<b>PJ202C</b>	Alum.	3	15 x17	108.00	<b>011007</b>
		30'-33' Twin (30-40)	391290	<b>SS0647C</b>	<b>S.S.</b>	3	14½x17	346.00	<b>013002</b>
		21'-24' Single (36-47)	391201	<b>PJ203C</b>	Alum.	3	14½x19	108.00	<b>011008</b>
		27'-30' Twin (36-47)	389924	<b>SS0649C</b>	<b>S.S.</b>	3	14 x19	346.00	<b>013003</b>
		18'-22' Single (42-54)	391202	<b>PJ204C</b>	Alum.	3	14¼x21	108.00	<b>011009</b>
		25'-28' Twin (42-54)	389923	<b>SS0651C</b>	<b>S.S.</b>	3	13¾x21	346.00	<b>013004</b>
		23'-25' Twin (50-62)	391203	<b>PJ205C</b>	Alum.	3	14½x23	108.00	<b>011010</b>
		23'-25' Twin (50-62)	389019	<b>SS0653C</b>	<b>S.S.</b>	3	14 x19	346.00	<b>013005</b>
"Heavy-Duty Special Applications" (Hard to Plane Boats) Thru-Hub Exhaust (260 HP maximum)		32'+ Twin (35-45)		<b>SS0817C</b>	<b>S.S.</b>	3	15¼x17 (RH)	386.00	<b>013015</b>
					<b>S.S.</b>	3	15¼x17 (LH)		<b>013019</b>
		24'-28' Single (35-45)		<b>SS0817C</b>	<b>S.S.</b>	3	15¼x17 (RH)	386.00	<b>013015</b>
		24'-28' Twin (40-48)		<b>SS0819C</b>	<b>S.S.</b>	3	15 x19 (RH)	386.00	<b>013016</b>
					<b>S.S.</b>	3	15 x19 (LH)		<b>013021</b>
		22'-24' Single (40-48)		<b>SS0819C</b>	<b>S.S.</b>	3	15 x19 (RH)	386.00	<b>013016</b>
		22'-24' Twin (45-53)		<b>SS0821C</b>	<b>S.S.</b>	3	14½x21 (RH)	386.00	<b>013017</b>
					<b>S.S.</b>	3	14½x21 (LH)		<b>013023</b>
		20'-22' Single (45-53)		<b>SS0821C</b>	<b>S.S.</b>	3	14½x21	386.00	<b>013017</b>
1.6 Litre (115 HP) 2:1 V-4		Barges, Houseboats (1-18)	382761	<b>PJ87</b>	Alum.	3	14 x11	83.00	<b>012047</b>
1.8 Litre (140 HP) 2:1 V-4		26'+ (14-28)	391668	<b>PJ88C</b>	Alum.	3	14 x13	92.00	<b>011001</b>
		22'-26' (24-26)	391198	<b>PJ89C</b>	Alum.	3	13¾x15	92.00	<b>011002</b>
		22'-26' (24-36)	389949	<b>SS0515-II-C</b>	<b>S.S.</b>	3	13¾x15	294.00	<b>013011</b>
		19'-22' (30-42)	391199	<b>PJ90C</b>	Alum.	3	13¼x17	92.00	<b>011003</b>
		19'-22' (30-40)	389948	<b>SS0517-II-C</b>	<b>S.S.</b>	3	13¼x17	294.00	<b>013012</b>

Continued on next page



**(OMC SEA DRIVE/'82 Thru CONTINUED)**

Motor-Model-Ratio	Year	Boat Size & Speed (MPH)	OMC Equiv.	Michigan Part No.	Mat'l.	Blds.	Dia. & Pitch	Price	Numeric
1.6 Litre (115 HP) 2:1 V-4	82 Thru	17'-20' (38-50)	390896	<b>PJ91C</b>	Alum.	3	13 x19	\$ 92.00	<b>011004</b>
1.8 Litre (140 HP) 2:1 V-4	82 Thru	17'-20' (38-50)	389510	<b>SS0519-II-C</b>	<b>S.S.</b>	3	13 x19	294.00	<b>013013</b>
		15'-18' (44-56)	389788	<b>PJ83C</b>	Alum.	3	13 x21	92.00	<b>011005</b>
		15'-18' (44-56)	389512	<b>SS0521-II-C</b>	<b>S.S.</b>	3	13 x21	294.00	<b>013014</b>

**OMC SAILDRIVE**

RH Part No.	Dia. & Pitch	Blds.	Metal	Price	Numeric
<b>PJ41</b>	10 1/2x10	3	Alum.	\$ 50.00	<b>012027</b>

**BMW MODEL G-130-S, G-190-S, G-220-S (Thru 1982)**

HP Range: 130-190-220. (For twin installations increase pitch 2")						
Approx. HP	Drive Ratio	Boat Length			Price	Numeric
		Thru 17'	18'-21'	22'-25'		
130 HP	2.2:1	14x19	14x17	14x15		
190 HP	1.95:1	14x21	14x19	14x17		
220 HP	1.95:1	14x23	14x21	14x19		
LH Rot.	RH Rot.	Dia. & Pitch	Blds.	Metal	Price	Numeric
<b>SMC350</b>	<b>SMC351</b>	14x23	3	Alum.	\$150.00	<b>082036</b>

**CHRYSLER MODEL 40**

HP Range: to 80. Recom. (For twin installations increase pitch 2")						
Part No.	Dia. & Pitch	Blds.	Metal	Price	Numeric	Houseboats, Barges
						11 1/2x8
						11 1/2x9
						11 1/2x11
						11 1/2x12
<b>PS-74</b>	11 1/2x10	3	Alum.	\$ 75.00	<b>152026</b>	
<b>PS-73</b>	11 1/2x11	3	Alum.	75.00	<b>152025</b>	
<b>PS-72</b>	11 1/2x13	3	Alum.	75.00	<b>152024</b>	
<b>PS-71</b>	11 1/2x12	3	Alum.	75.00	<b>152023</b>	

**CHRYSLER DRIVE 90 MODEL 80, 81; MUNCIE TURBOMARINE FLEXIDRIVE NO. 302C, 501C, 503, 700 & 900; MARINE DRIVE SYSTEMS MODEL 80, 81, 101**

HP Range: 110 to 300. Recom. (For twin installations increase pitch 2")						
Approx. HP	Drive Ratio	Boat Length			Price	Numeric
		18'-21'	22'-25'	Houseboats, Barges		
110 HP	2:1	16 x16	15 x15	15 1/4x13		
150-155 HP	1.3:1	16 x16	15 x15	15 1/4x13		
	1.6:1	15 1/4x18	15 1/4x17	15 1/4x13		
175 HP	2:1	17 x19	17 x17	17 x14		
	1.3:1	15 1/4x17	15 x15	16 1/4x13		
200 HP	1.6:1	17 x19	17 x16	17 x12		
	1.3:1	15 1/4x18	16 x16	16 1/4x14		
225 HP	1.6:1	17 x20	17 x19	17 x15		
	1.3:1	15 1/4x18	16 x16	17 x12		
250-260 HP	1.6:1	17 x19	17 x16	17 x15		
	1.32:1	15 1/4x18	15 1/4x17	17 x13		
290-300 HP	1.6:1	17 x18	17 x16	17 x16		
	1.32:1	15 1/4x19	15 1/4x18	17 x14		
						17 x17
LH Part No.	Numeric	RH Part No.	Numeric	Dia. & Pitch	Blds.	Metal Price
<b>SMC-737</b>	<b>072091</b>	<b>SMC-721</b>	<b>072090</b>	15 1/4x17	3	Alum. \$186.00
<b>SMC-765</b>	<b>072101</b>			16 x16	3	Alum. 209.00
<b>SMC-736</b>	<b>072089</b>	<b>SMC-720</b>	<b>072088</b>	16 x15	3	Alum. 186.00
<b>SMC-735</b>	<b>072095</b>			16 1/4x13	3	Alum. 186.00
<b>SMC-744</b>	<b>072097</b>	<b>SMC-760</b>	<b>072096</b>	17 x19	3	Alum. 209.00
<b>SMC-750</b>	<b>072099</b>	<b>SMC-751</b>	<b>072098</b>	17 x17	3	Alum. 209.00
<b>SMC-768</b>	<b>072103</b>	<b>SMC-769</b>	<b>072104</b>	17 x16	3	Alum. 209.00
<b>SMC-734</b>	<b>072093</b>	<b>SMC-733</b>	<b>072092</b>	17 x15	3	Alum. 209.00
<b>SMC-773</b>	<b>072105</b>	<b>SMC-774</b>	<b>072106</b>	17 x12	3	Alum. 209.00
<b>SMC-803</b>	<b>032105</b>	<b>SMC-802</b>	<b>032106</b>	16 x25	3	Alum. 186.00
<b>SMC-805</b>	<b>032107</b>	<b>SMC-804</b>	<b>032108</b>	16 3/8x23	3	Alum. 186.00
<b>SMC-807</b>	<b>032109</b>	<b>SMC-806</b>	<b>032110</b>	16 3/4x21	3	Alum. 186.00
<b>SMC-809</b>	<b>072113</b>	<b>SMC-808</b>	<b>072112</b>	16 3/4x19	3	Alum. 186.00

**CHRYSLER MODEL 300**

HP Range: 105 to 270. Recom. (For twin engines increase pitch 2")									
Approx. HP	Drive Ratio	Boat Length					Price	Numeric	
		Thru 17'	18'-20'	21'-22'	23'-25'	26'-28'			
105@4000	2:1	14x21C	14x19C	14x17C					
140@4800	2:1	14x21C	14x19C	14x17C					
155@4450	1.75:1	14x21C	14x19C	14x17C					
195@4400	1.5:1		14x21C	14x19C	14x17C				
245@4600	1.5:1		14x21C	14x19C	14x17C				
270@4600	1.5:1			14x21C	14x19C	14x17C			
LH Part No.	Numeric	RH Part No.	Numeric	Dia. & Pitch	Blds.	Metal	Price		
		<b>AMC-104C</b>	<b>071002</b>	14x17	3	Alum.	\$146.00		
<b>AMC-107C</b>	<b>071003</b>	<b>AMC-106C</b>	<b>071004</b>	14x19	3	Alum.	146.00		
		<b>AMC-108C</b>	<b>071006</b>	14x21	3	Alum.	146.00		
		<b>AMC-110C</b>	<b>071008</b>	14x23	3	Alum.	146.00		
		<b>AMC-128C</b>	<b>071010</b>	15x15	3	Alum.	156.00		
<b>AMC-131C</b>	<b>071013</b>	<b>AMC-130C</b>	<b>071012</b>	15x17	3	Alum.	156.00		
		<b>AMC-132C</b>	<b>071014</b>	15x19	3	Alum.	156.00		
		<b>AMC-152C</b>	<b>071021</b>	16x17	3	Alum.	164.00		

**MARINE DRIVE SYSTEMS MODEL 91 (1-1/2" TAPERED SHAFT WITH KEY)\* MODEL 82, 83, 103 (SPLINED SHAFT)\*\***

Model	Dia. & Pitch	Blds.	Metal	Rotation	Numeric	Rotation	Numeric	Price
*	18x15	3	Alum.	LH	<b>132001</b>	RH	<b>132002</b>	\$207.00
*	18x16	3	Alum.	LH	<b>132003</b>	RH	<b>132004</b>	207.00
*	18x17	3	Alum.	LH	<b>132005</b>	RH	<b>132006</b>	207.00
*	18x18	3	Alum.	LH	<b>132007</b>	RH	<b>132008</b>	207.00
*	18x19	3	Alum.	LH	<b>132009</b>	RH	<b>132010</b>	207.00
*	18x20	3	Alum.	LH	<b>132011</b>	RH	<b>132012</b>	207.00
*	18x21	3	Alum.	LH	<b>132013</b>	RH	<b>132014</b>	207.00
*	19x15	3	Alum.	LH	<b>132015</b>	RH	<b>132016</b>	231.00
*	19x16	3	Alum.	LH	<b>132017</b>	RH	<b>132018</b>	231.00
*	19x17	3	Alum.	LH	<b>132019</b>	RH	<b>132020</b>	231.00
*	19x21	3	Alum.	LH	<b>132021</b>	RH	<b>132022</b>	231.00
*	19x23	3	Alum.	LH	<b>132023</b>	RH	<b>132024</b>	231.00
*	19x25	3	Alum.	LH	<b>132025</b>	RH	<b>132026</b>	231.00
*	19x27	3	Alum.	LH	<b>132027</b>	RH	<b>132028</b>	231.00
*	20x15	3	Alum.	LH	<b>132029</b>	RH	<b>132030</b>	250.00
*	20x16	3	Alum.	LH	<b>132031</b>	RH	<b>132032</b>	250.00
*	20x17	3	Alum.	LH	<b>132033</b>	RH	<b>132034</b>	250.00
*	20x18	3	Alum.	LH	<b>132035</b>	RH	<b>132036</b>	250.00
*	20x19	3	Alum.	LH	<b>132037</b>	RH	<b>132038</b>	250.00
*	20x20	3	Alum.	LH	<b>132039</b>	RH	<b>132040</b>	250.00
*	20x21	3	Alum.	LH	<b>132041</b>	RH	<b>132042</b>	250.00
**	18x15	3	Alum.	LH	<b>132057</b>	RH	<b>132058</b>	207.00
**	18x16	3	Alum.	LH	<b>132059</b>	RH	<b>132060</b>	207.00
**	18x17	3	Alum.	LH	<b>132061</b>	RH	<b>132062</b>	207.00
**	18x18	3	Alum.	LH	<b>132063</b>	RH	<b>132064</b>	207.00
**	18x19	3	Alum.	LH	<b>132065</b>	RH	<b>132066</b>	207.00
**	18x20	3	Alum.	LH	<b>132067</b>	RH	<b>132068</b>	207.00
**	18x21	3	Alum.	LH	<b>132069</b>	RH	<b>132070</b>	207.00
**	19x15	3	Alum.	LH	<b>132071</b>	RH	<b>132072</b>	231.00
**	19x16	3	Alum.	LH	<b>132073</b>	RH	<b>132074</b>	231.00
**	19x17	3	Alum.	LH	<b>132075</b>	RH	<b>132076</b>	231.00
**	19x18	3	Alum.	LH	<b>132077</b>	RH	<b>132078</b>	231.00
**	19x19	3	Alum.	LH	<b>132079</b>	RH	<b>132080</b>	231.00
**	19x20	3	Alum.	LH	<b>132081</b>	RH	<b>132082</b>	231.00
**	19x21	3	Alum.	LH	<b>132083</b>	RH	<b>132084</b>	231.00

**Weekends last longer when you carry a spare.** Remember: for the safety of you and your passengers, you should always carry a spare Michigan prop and a prop wrench on board your boat.



## MERCURY MERCRUISER™ I ( '62-'63) MERCRUISER™ 80, 90

HP Range: 80 to 140. Recom. (For twin installations increase pitch 2")

Approx. HP	Boat Length					
	Thru 17'	18'-21'	22'-25'	Houseboats, Barges		
80-90 HP	13x15	13x13	13x11	13x11	14x10	
110 HP	13x17	13x15	13x13	13x11	14x12	
140 HP	13x21	13x19	13x17	13x15	14x14	
RH Part No.	Nearest Merc. Equiv.	Dia. & Pitch	Blds.	Metal	Price	Numeric
PR151	C48-35936A3	13x11	3	Alum.	\$ 94.00	032089
PR153	C48-32392A3	13x13	3	Alum.	94.00	032090
PR155	C48-32390A3	13x15	3	Alum.	94.00	032091
PR157	C48-32264A3	13x17	3	Alum.	94.00	032092
PR159	C48-32750A3	13x19	3	Alum.	94.00	032093
PR161	C48-32746A3	13x21	3	Alum.	94.00	032094
PR163	C48-52008A3	13x23	3	Alum.	94.00	032095
DQ430		14x10	4	Alum.	122.00	032078

## MERCURY MERCRUISER™ III

HP Range: 170 to 325. Recom. (For twin installations increase pitch 2")

Approx. HP	Drive Ratio	Boat Length				
		Thru 17'	18'-21'	22'-25'	Houseboats, Barges	
170-190 HP	1.33:1	15 1/4x17	16 1/4x14	16 1/4x13	16 1/4x13	16 3/4x12
	1.78:1	16 x25	16 3/8x23	16 3/4x21	16 x16	16 x16
225 HP	1.33:1	15 1/4x18	16 x15	16 1/4x14	16 1/4x13	16 3/4x12
	1.78:1	15 3/4x27	16 x25	16 3/8x23	16 x16	16 x16
300-325 HP	1.33:1	16 3/4x19	15 1/4x18	15 1/4x17	16 1/4x13	16 3/4x12
Aluminum props only.						
LH Part No.	Nearest Merc. Equiv.	RH Part No.	Nearest Merc. Equiv.	Diameter & Pitch	Blds.	Price
SMC803 032105	48-49973	SMC802 032106	48-49974	16 x25	3	\$186.00
SMC805 032107	48-49971	SMC804 032108	48-49972	16 3/8x23	3	186.00
SMC807 032109	48-33879	SMC806 032110	48-33880	16 3/4x21	3	186.00
SMC809 072113	48-33881	SMC808 072112	48-33882	16 3/4x19	3	186.00
SMC737 072091	48-31673	SMC721 072090	48-31674	15 1/4x17	3	186.00
SMC765 072101				16 x16	3	209.00
SMC736 072089	48-31671	SMC720 072088	48-31672	16 x15	3	186.00
SMC735 072095	48-31669			16 1/4x13	3	186.00

## MERCURY MERCRUISER™ 1A, 1B, 1C, 120, 140, 145DTS, 165, 228, 470, 485, 888, 898, 225S, 233, 255TRS, 260, 280TRS (Thru 1982)

HP Range: 110 to 280. Recom. (For twin installations increase pitch 2")  
(Old style—shift plate on back of engine or transom plate thrust hub 56292)

Approx. HP	Boat Length					
	Thru 17'	18'-20'	21'-22'	23'-25'		
110-120 HP	15 x23C	15 1/4x21C	15 1/2x19	15 3/4x17C		
140 HP (1.68:1 Gear)	15 1/4x21C	15 1/2x19C	15 3/4x17C	16 x15C		
140 HP (1.98:1 Gear)	15 x23C	15 1/4x21C	15 1/2x19C	15 3/4x17C		
150-165-170 HP	15 x23C	15 1/4x21C	15 1/2x19C	15 3/4x17C		
185-188-198-225-228-233 HP	15 x23C	15 1/4x21C	15 1/2x19C	15 3/4x17C		
255-280 HP	15 x23C	15 1/4x21C	15 1/2x19C	15 3/4x17C		
RH Part No.	Nearest Merc. Equiv.	Dia. & Pitch	Blds.	Metal	Price	Numeric
SMC504C	48-36020A4	16 x13	3	Alum.	\$114.00	031034
SMC374C	48-79570A4	16 x15	3	Alum.	112.00	031035
SMC376C	48-79572A4	15 3/4x17	3	Alum.	112.00	031036
SSM350C		15 3/4x17	3	S.S.	340.00	033007
SMC378C	48-79574A4	15 1/2x19	3	Alum.	112.00	031037
SSM354C		15 1/2x19	3	S.S.	340.00	033008
SMC380C	48-79576A4	15 1/4x21	3	Alum.	112.00	031038
SSM358C		15 1/4x21	3	S.S.	340.00	033009
SMC382C	48-79578A4	15 x23	3	Alum.	112.00	031039
SMC384C	48-79580A4	15 x25	3	Alum.	112.00	031040

\*CAUTION: Standard trim tab is 34127A1; standard thrust washer 56292A1. Black Max series props used on these drives will require trim tab 31640A1 and thrust washer 77987. NOTE: All Props in above listing have Cupped Blade Edges.

## MERCURY MERCRUISER™ MODEL O

HP Range: 60 HP. Recom. (For twin installations increase pitch 2")

Part No.	Merc. Equiv. No.	Dia. & Pitch	Boat Length			Houseboats, Barges
			Thru 17'	18'-21'	22'-25'	
			10 1/4x15	10 1/4x13	10 1/4x11	10 1/8x9
PR31	48-32194A1	10 1/4x 9	3	Alum.	\$ 77.00	032083
PR33	48-33774A1	10 1/4x10	3	Alum.	77.00	032084
PR35	48-38098A1	10 1/4x11	3	Alum.	77.00	032085
PR37	48-38094A1	10 1/4x12	3	Alum.	77.00	032086
PR39	48-38090A1	10 1/4x13	3	Alum.	77.00	032087
PR43	48-38086A1	10 1/4x15	3	Alum.	77.00	032088

## MERCRUISER™ STERN DRIVE (BLACK MAX SERIES PROPS) (1983 Thru)

(New style has shift plate on side of engine or exhaust manifold)

Approx. HP	Gear	23 Pitch	21 Pitch	19 Pitch			
120 HP	1.98:1	up to 18'	up to 19'	17'-21'			
140 HP	1.98:1	up to 18'	up to 19'	17'-21'			
170 HP	1.84:1	up to 20'	18'-22'	20'-24'			
170 HP	1.65:1	up to 19'	up to 20'	18'-22'			
185 HP	1.65:1		up to 18'	up to 19'			
185 HP	1.84:1	up to 21'	18'-23'	21'-25'			
188 HP	1.65:1		up to 18'	up to 19'			
198 HP	1.50:1	up to 18'	up to 19'	18'-21'			
228 HP	1.50:1	up to 19'	up to 20'	19'-22'			
260 HP	1.32:1			up to 20'			
Approx. HP	Gear	17 Pitch	15 Pitch	13 Pitch	11 Pitch		
120 HP	1.98:1	19'-23'	21'-25'	23'-27'	24'-up		
140 HP	1.98:1	19'-23'	21'-25'	23'-27'	24'-up		
170 HP	1.84:1	21'-25'	22'-26'	23'-28'	25'-up		
170 HP	1.65:1	20'-24'	21'-25'	22'-26'	23'-28'		
185 HP	1.65:1	up to 21'	19'-23'	21'-25'	23'-26'		
185 HP	1.84:1	22'-26'	23'-27'	24'-29'	26'+		
188 HP	1.65:1	up to 21'	19'-23'	21'-25'	23'-26'		
198 HP	1.50:1	19'-23'	22'-28'	24'-30'	27'-up		
228 HP	1.50:1	21'-25'	23'-28'	25'-32'	28'-up		
260 HP	1.32:1	up to 21'	20'-23'	22'-26'	24'-31'		
RH Part No.	Nearest Merc. Equiv.	Dia. & Pitch	Blds.	Metal	Price	Numeric	
PM211C	48-78112A4	16 x11	3	Alum.	\$114.00	031021	
PM213C	48-78114A4	16 x13	3	Alum.	114.00	031022	
SSM245C	48-93272A4	14 1/2x15	3	S.S.	337.00	033002	
PM215C	48-78116A4	15 1/4x15	3	Alum.	114.00	031023	
SSM247C	48-79794A4	14 1/2x17	3	S.S.	337.00	033003	
PM217C	48-78118A4	14 1/2x17	3	Alum.	114.00	031024	
SSM249C	48-73980A4	14 x19	3	S.S.	337.00	033004	
PM219C	48-78120A4	14 x19	3	Alum.	114.00	031025	
SSM251C	48-73982A4	13 3/4x21	3	S.S.	337.00	033005	
PM221C	48-78122A4	13 3/4x21	3	Alum.	114.00	031026	
SSM253C	48-75724A4	13 1/2x23	3	S.S.	337.00	033006	
PM223C	48-78124A4	13 1/2x23	3	Alum.	114.00	031027	
Model	Part No.	Boat Size-Speed (MPH)	Dia. & Pitch	Blds.	Metal	Price	Numeric
V-8 Thru 260 HP	SSM272C	30'+ (40-45)	15 1/4x17 (RH)	3	S.S.	\$386.00	033020
Twin Engine (260 HP max.)	SSM292C	25'-30' (44-48)	15 1/4x17 (LH)	3	S.S.	386.00	033023
	SSM292C	25'-30' (44-48)	15 x19 (RH)	3	S.S.	386.00	033021
	SSM312C	22'-25' (48-55)	15 x19 (LH)	3	S.S.	386.00	033025
	SSM312C	22'-25' (48-55)	14 1/2x21 (RH)	3	S.S.	386.00	033022
	SSM312C	22'-25' (48-55)	14 1/2x21 (LH)	3	S.S.	386.00	033027

\*CAUTION: Standard trim tab is 31640A1; standard thrust washer 77987. Mercurier I props (1982 and before) on this stern drive require thrust washer 56292A1. NOTE: (For twin engines increase pitch 4").

Michigan Wheel gives you unmatched selection and variety. Over 40,000 different combinations of diameter, pitch, rotation, shaft size and metals are available.



## OUTBOARD MARINE (OMC) 80-90 HP 2 CYCLE ('68) SMALL GEAR CASE; MARINE DRIVE SYSTEMS/RANGER

HP Range: 80 to 120. Recom. (For twin installations increase pitch 2")						
Approx. HP	Thru 17'	18'-21'	Boat Length		Houseboats, Barges	
80-90 HP	10x11	10 1/4x10	10 1/4x9	10 1/4x9	10 1/2x8	
110-120 HP	10x13	10 x11	10 1/4x10	10 1/4x9		
Part No.	OMC Equiv. No.	Dia. & Pitch	Blds.	Metal	Price	Numeric
SMC862		10 1/4x9	3	Alum.	\$ 67.00	012106
SMC864		10 1/2x8	3	Alum.	67.00	012107
PJ75	378040	10 1/4x10	3	Alum.	56.00	012043
PJ76	377978	10 x11	3	Alum.	54.00	012044
PJ77	378039	10 x12	3	Alum.	54.00	012045
PJ78	593437	9 1/2x10	3	Alum.	56.00	012046
*PJ73	381446	10 x11	3	Alum.	52.00	012041
*PJ74	379260	10 x 9 1/4	3	Alum.	52.00	012042

\*Small Hub prop—uses special small nut—Part No. 302001—\$11.00

## OUTBOARD MARINE (OMC) MODEL 13 LARGE GEAR CASE ('64-'66)

HP Range: 120 to 150. Recom. (For twin installations increase pitch 2")						
Approx. HP	Thru 17'	18'-21'	Boat Length		Houseboats, Barges	
120 HP	14 1/4x20	14 1/4x18	14 1/4x16	14 1/4x16	14 1/4x14	
150 HP	14 1/4x22	14 1/4x20	14 1/4x18	14 1/4x18	14 1/4x16	
Part No.	OMC Equiv. No.	Dia. & Pitch	Blds.	Metal	Price	Numeric
SMC304	380189	14 1/4x18	3	Alum.	\$131.00	012103
SMC308	380188	14 1/4x16	3	Alum.	131.00	012104
SMC312	380074	14 1/4x14	3	Alum.	131.00	012105

## OUTBOARD MARINE (OMC) MODEL 14 LARGE GEAR CASE ('67-'77)

HP Range: 120 to 245. Recom. (For twin installations increase pitch 2")						
Approx. HP	Thru 17'	18'-21'	Boat Length		Houseboats, Barges	
100-120 HP	14x16	14x14	14x12	14x11		
140-170 HP	14x18	14x16	14x14	14x12		
185-245 HP	14x20	14x18	14x16	14x14		
Right Hand Part No.	OMC Equiv. No. (RH Only)	Dia. & Pitch	Blds.	Metal	Price	Numeric
SMC304	380189	14 1/4x18	3	Alum.	\$131.00	012103
SMC308	380188	14 1/4x16	3	Alum.	131.00	012104
SMC312	380074	14 1/4x14	3	Alum.	131.00	012105
PR105	381442	13 x14	3	Alum.	131.00	012087
PR115	382676	14 x11	3	Alum.	131.00	012089
PR118	382017	14 x12	3	Alum.	131.00	012090
PR120	381185	14 x14	3	Alum.	131.00	012091
PR122	381186	14 x16	3	Alum.	131.00	012092
PR124	381187	14 x18	3	Alum.	131.00	012093
PR126	383287	14 x20	3	Alum.	131.00	012094

## VOLVO-PENTA 80, 100; EATON MODEL A; MUNCIE 300, 500, 501; PERKINS Z; ENFIELD TRANSA-DRIVE (SPLINED SHAFT 13/16" DIA.)

HP Range: 80 to 155. (For twin installations increase pitch 2")						
Approx. HP	Drive Ratio	Thru 17'	Boat Length		Houseboats, Barges	
80-110 HP	1.1:1	12 1/2x13	12 1/2x11			
	1.5:1	14 x14	14 x12	14 x11	14x9	
	1.8:1	14 x16	14 x14	14 x12	14x9	
140-155 HP	1.1:1	12 1/2x15	12 1/2x13	12 1/2x11		
	1.5:1	14 x16	14 x14	14 x12	14x9	
	1.8:1	14 x18	14 x16	14 x14	14x12	
LH Rot. Part No.	Volvo Equiv.	Dia. & Pitch	Blds.	Metal	Price	Numeric
SMC885	804446	12 1/2x15	3	Alum.	\$ 99.00	082035
SMC900		14 x16	3	Alum.	127.00	082041
SMC898	806603	14 x14	3	Alum.	127.00	082037
SMC906	806601	14 x12	3	Alum.	127.00	082043

## VOLVO-PENTA 100-110; EATON MODEL B; (PIN DRIVE)

HP Range: 110 to 150. (For twin installations increase pitch 2")									
Drive Ratio	Thru 17'	Boat Length		Houseboats, Barges					
1.26:1	13x15	14x12	14x10	14x9					
1.47:1	14x16	14x14	14x13	14x12					
1.5:1	14x16	14x14	14x13	14x12					
LH Rot. Part No.	Volvo Equiv.	RH Rot. Part No.	Volvo Equiv.	Dia. & Pitch	Blds.	Metal	Price		
SMC929	082051	SMC944	082054	14x16	3	Al.	\$127.00		
SMC925	082049	809862	SMC940	082052	813241	14x14	3	Al.	127.00
SMC922	082047	813229		14x13	3	Al.	127.00		
SMC921	082045	813228		14x12	3	Al.	127.00		
SMC980	082057	813226		14x10	3	Al.	127.00		

## VOLVO-PENTA AQUAMATIC 200, 250, 270, 280, 290 (SPLINED SHAFT 1-1/8" DIA.)

HP Range: 110 to 290. (For twin installations increase pitch 2")									
Approx. HP	Drive Ratio	Thru 17'	Boat Length		Houseboats, Barges				
110-145 HP	1.35:1	13 x13	13x12						
	1.62:1	14 x17	14x16	14x15	15x12				
	2.15:1	14 x19	14x18	14x17	15x14				
150-185 HP	1.35:1	14 x17	14x16	15x12	15x10				
	1.61:1	14 x21	14x19	15x16	15x14				
	1.89:1	14 x19	14x17	15x14	15x12				
190-225 HP	1.35:1	14 x21	15x19	15x17					
	1.61:1	14 3/8x21	16x18	16x16	16x13				
230-260 HP	1.61:1	14 x25	14x23	15x21					
290 HP	1.61:1	14 x25	14x23	14x21					
LH Rot. Part No.	Volvo Equiv.	RH Rot. Part No.	Volvo Equiv.	Dia. & Pitch	Blds.	Mtl.	Price		
SMC556 ***	082081	813282-1	SMC566 ***	082080	813283-9	14 x12	3	Al.	\$130.00
SMC570 ***	082083	813286-2	SMC530 ***	082082	813287-0	14 x14	3	Al.	130.00
SMC338 ***	082025	814626-8	SMC339 ***	082026	814631-8	14 x15	3	Al.	150.00
SMC342 ***	082027	814627-6	SMC343 ***	082028	814632-6	14 x17	3	Al.	150.00
	†082001	814627-6		†082002	814632-6	14 x17	3	Al.	138.00
				†084006		14 x17	3	S.S.	341.00
SMC346	082031	814626	SMC347	082032	814633	14 x19	3	Al.	150.00
	†082003	814628-4		†082004	814633-4	14 x19	3	Al.	138.00
				†084008		14 x19	3	S.S.	341.00
SMC348 ***	082033	814629-2	SMC349 ***	082034	814634-2	14 x21	3	Al.	150.00
	†082009	814629-2		†082010	814634-2	14 x21	3	Al.	138.00
SMC350 ***	082053	839569-1	SMC351 ***	082036	839570-9	14 x23	3	Al.	150.00
PR248	082061		PR250	082062		14 3/8x23	3	Al.	130.00
PR256	082063		PR258	082064		14 3/8x25	3	Al.	130.00
PR260	082065					14 3/8x27	3	Al.	130.00
PR264	082067					14 3/8x29	3	Al.	130.00
SMC592 ***	082085	813296-1	SMC582 ***	082084	813297-9	15 x11	3	Al.	134.00
SMC606 ***	082087	813316-7	SMC604 ***	082086	813317-5	15 x13	3	Al.	134.00
SMC340 ***	082059	814611-0	SMC341 ***	082060	814615-1	15 x15	3	Al.	150.00
SMC344 ***	082029	814612-8	SMC345 ***	082030	814616-9	15 x17	3	Al.	150.00
	†082011	851124-8		†082012	851125-5	15 x17	3	Al.	145.00
SMC293	082021	814488	SMC292	082022	814489	15 x19	3	Al.	150.00
	†082013	850864-0		†082014	850865-7	15 x19	3	Al.	145.00
SMC295	082023	814648	SMC294	082024	814649	15 x21	3	Al.	150.00
	†082015	850866-5		†082016	850867-3	15 x21	3	Al.	145.00
PR397	082069		PR396	082068		16 x13	3	Al.	163.00
PR401	082071		PR400	082070		16 x15	3	Al.	163.00
PR405	082073		PR404	082072		16 x17	3	Al.	163.00
PR409	082075		PR408	082074		16 x19	3	Al.	163.00
PR413	082077		PR412	082076		16 x21	3	Al.	163.00
PR417	082079		PR416	082078		16 x23	3	Al.	163.00
†SSV717C **	083001	852086-8	†SSV717C **	083002	852155-1	15 1/4x17	3	S.S.	361.00
†SSV719C **	083003	852085-0	†SSV719C **	083004	852138-7	15 x19	3	S.S.	361.00
†SSV721C+ **	083005	852087-6	†SSV721C+ **	083006	852137-9	14 1/2x21	3	S.S.	361.00

NOTE: Bushings for above alum. props suggested for max. 240 HP unless marked with af.

\*\*\*Standard hub props drive serial #PZ2871719 require cone #850785-7, ring #851261-1, washer #850888-9, and bolt #850889-7 (prior drives require washer #897367-9 also).

\*\*Long hub props require cone #850785-7, washer #850888-9, and bolt #850889-7.

+Will not fit a 270 Stern Drive.

For SSV Series:

1. Designed for boats with power to weight ratios of 12:1 and below.
2. Boats must have power trim.
3. Anti-cavitation plate height 1" above boat bottom.
4. Blades cambered must run in ventilated condition.
5. Use 2" less pitch if current aluminum prop cupped, 3" less if uncupped.



# INDEPENDENT SERVICE STATIONS

• **FACTORY EQUIPPED REPAIRS THRU 36"**

★ **FACTORY EQUIPPED REPAIRS THRU 16"**

## ALASKA

- Alaska Marine Propellers, 11401 Daryl St. #3, Anchorage, AK 99515

## ARIZONA

- ★ Seth Smith Marine Dist., Inc., 3311 E. Broadway, Phoenix, AZ 85040

## CALIFORNIA

- Pitchometer Propeller Co., 2516 Blanding Ave., Alameda, CA 94501
- Shasta Propeller & Marine, 5831 Rosebud Lane, Unit R, Sacramento, CA 95841
- ★ Wilmington Propeller Service, 222 North Lagoon, Wilmington, CA 90744

## CONNECTICUT

- Essex Machine Works, 50 West Ave., Essex, CT 06426

## FLORIDA

- Anchor Boat & Supply Co., 96 S.W. 7th St., Miami, FL 33130
- Bobby Soles Propeller Service, 1730 Hill Ave.—Mangonia Park, W. Palm Beach, FL 33407
- C&B Propeller Services, Inc., 4930 Commerce St., Tampa, FL 33686
- ★ Ellis Propeller Co., Inc., 2900 Phoenix Ave., Jacksonville, FL 32206
- Frank & Jimmie's Propeller Shop, 100 S.W. 6th St., Ft. Lauderdale, FL 33301
- General Propeller Co., 1415-9th Ave. E., Bradenton, FL 33508
- Jacksonville Propeller Co., 504 E. 8th St., Jacksonville, FL 32206
- ★ Marine Wheels, Inc., 2902 W. 12th St., Panama City, FL 32401
- Miami Propeller Service Co., 3396 N.W. South River Dr., Miami, FL 33142
- West Coast Propeller Company, 1901 Honda Rd., Ft. Myers, FL 33901

## GEORGIA

- Dominey Machine & Propeller Service, 6005 Habersham St., Brunswick, GA 31520
- ★ Harry's Prop Shop, P.O. Box 184, Linwood Dr. N.W., Gainesville, GA 30501

## HAWAII

- Propellers Hawaii, c/o Keehi Marine Center, 24 Sand Island Access Rd., Honolulu, HI 96819

## INDIANA

- ★ Delaware Propeller Service, 1717 N. Walnut St., Muncie, IN 47303

## IOWA

- Lorenz & Jones Marine Dist., 1920 Delaware Ave., Ankeny (Des Moines), IA 50021

## KANSAS

- Midwest Propeller Service, P.O. Box 876, 15650 S. Lone Elm Rd., Olathe, KS 66061

## LOUISIANA

- Bonifanti, Inc., 5163 Greenwell Springs, Baton Rouge, LA 70806
- Hardie's Wagner Marine Supply, 2739 Earhart Blvd., New Orleans, LA 70113
- Houma Machine & Marine Supply, 1219-27 E. Main St., Houma, LA 70360
- Johnny's Propeller Shop, 1445 Front St., Morgan City, LA 70380

## MARYLAND

- Curtis Propeller Service, 4760 Stamp Rd., Temple Hills, MD 20748
- McClellan Bros., 122 North Langley Rd., Glen Burnie, MD 21061

## MASSACHUSETTS

- New England Propeller Inc., 68 VonHillern, Exit 17 S.E. Expy., Boston, MA 02125

## MICHIGAN

- Johnny's Boat Propeller Service, 17307 E. Warren, Detroit, MI 48224
- Marysville Propeller, Inc., 1465 Michigan Ave., Marysville, MI 48040
- McDurmon Dist., G-12238 Fenton Rd., Fenton, MI 48430

## MINNESOTA

- ★ Tribilt Mfg. Co., 811 Pillsbury Ave. S., Minneapolis, MN 55420

## MISSOURI

- Central Propeller Co., 2507 N. Hwy. 94, St. Charles, MO 63301

## NEW JERSEY

- General Marine Supply, Inc., 1602 Whitehorse Pike, Egg Harbor City, NJ 08215
- Ocean Propeller Co., 3340 E. Washington Ave., Rte. 37, Toms River, NJ 08753
- Tri State Propellers, Inc., 513 Washington Ave., Carlstadt, NJ 07072

## NEW YORK

- Morgan Recreational Supply, 7263 Victor Pittsford Rd., Victor, NY 14564

## NORTH CAROLINA

- ★ Barbour Marine Supply, 216 Front St., Beaufort, NC 28516
- ★ The Prop Shop of Wilmington, 1302 S. 5th St., Wilmington, NC 28401

## OHIO

- Delta Propeller Co., 240 College St., Village of Cleves, OH 45002
- Minderman Marine, 129 Buckeye Blvd., Port Clinton, OH 43452
- Propeller Sales & Service, P.O. Box 176, Powell, OH 43065
- Sante Marine, Inc., 13368 Madison Ave., Lakewood, OH 44107

## OKLAHOMA

- Swanson's Prop Shop, 3229 S. Harvard, Tulsa, OK 74135

## OREGON

- ★ Independent Marine Propeller Supply, 8675 N. Crawford, Portland, OR 97203
- Sheffield Marine Propeller, 10002 N. Vancouver Way, Portland, OR 97217

## PENNSYLVANIA

- ★ Keller Marine Service, Inc., Route #11 & 15, Port Trevorton, PA 17864
- Skip's II Propeller Service, 401 Madison St., Shillington, PA 19607
- Skip's Propeller Service, 109 Curry Hollow Rd., W. Mifflin, PA 15122

## SOUTH CAROLINA

- Skip's III Propeller Service, 7169 Cross County Rd., No. Charleston, SC 29418

## TENNESSEE

- ★ Ed's Marine Shop, 3291 Jackson Ave., Memphis, TN 38122

## TEXAS

- Baumann Marine Service, 2311 Macario Garcia Dr., Houston, TX 77261
- ★ James Propeller Service, 11111 Harry Hines Blvd., Dallas, TX 75229
- ★ Marine Propeller Works, P.O. Drawer G, W. Hwy. 35, Aransas Pass, TX 78336

## VIRGINIA

- Murphy's Propeller Shop, 1550 Azalea Garden Rd., Norfolk, VA 23502

## WASHINGTON

- Bird-Johnson Co., Seattle Operation—RDH Propeller Div., 4451 14th Ave., N.W., Seattle, WA 98107
- The Prop Shop, 3600 South Road, Lynnwood, WA 98037
- Western Wright Marine, 1525 Commerce, Tacoma, WA 98402

## WISCONSIN

- Marine Associates, 1651 Handley Rd., Hudson, WI 54016
- Moe's Marine Service, 2022 W. Wind Rd., Oshkosh, WI 54901



## INTERNATIONAL

### AUSTRIA

- ★ Kirschbaum Ges.m.b.H. An Der Ostbahn 46, 1100 Wien, Austria

### CANADA

- Bayview Propeller Repair (Artanus, Inc.), Northey's Bay Road, Woodview, Ontario K0L 3E0

### FRANCE

- Euro Helice S.A.R.L., Route De Giens, Le Pousset 83400 Hyeres

### GERMANY

- ★ Grover Propeller K-G, Aachner Strasse 241, 5 Koln 41, West Germany

### HOLLAND

- Federal B.V., Veilingweg 8, Zaltbommel, Netherlands

### JAPAN

- ★ OEM Supply Ltd., Salon De Chapeau 605, 4-3-1 Sendagaya, Shibuya-Ku, Tokyo 151, Japan

### PUERTO RICO

- San Juan Propeller, Inc., Isla Grande Airport, Hanger #22, San Juan, Puerto Rico

### SWEDEN

- ★ Motor & Propeller Service, Hamnvagen 1, S-14300 Varby, Sweden

### U.S. VIRGIN ISLANDS

- Antilles Yachting Service, P.O. Box 7218, Benner Bay, St. Thomas, U.S.V.I. 00801

©1988 Michigan Wheel Corporation. All rights reserved. Printed in U.S.A.