

Michigan
Wheel 
Corporation

Outboard/Stern Drive
Catalog **1992**



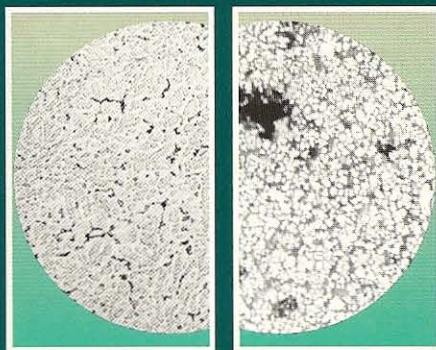
WE MAKE HUNDREDS OF PROPS TO OVER MILLIONS OF MILES

It's simple. Michigan Wheel makes more kinds of props for more kinds of boats than anyone else. We make them better. And we've been making them for more than 80 years. So no matter what you have in mind—cruising, waterskiing, fishing, whatever—Michigan Wheel has a prop to match your specific performance needs. More combinations of metal, diameter, pitch, rotation and shaft size are available from Michigan Wheel than any other manufacturer.

IMPORTANT NOTE: If you are replacing a prop and can't find the part number listed in this catalog, your Michigan Wheel dealer or distributor can help. He will consult the Michigan Wheel Index of Outboard and Stern Drive Propellers. From this index, which provides part numbers for every Michigan Wheel prop produced since we began in 1903, your dealer can determine the specifications you need. (For information on how to order your own copy of the index, see accessories on page 4.)

OUR EXCLUSIVE, HIGH-STRENGTH ALLOYS MEAN LONGER PROP LIFE.

The quality of any product begins with the materials that go into it. While some manufacturers skimp by using lower grade metal, Michigan Wheel uses only the finest grade alloys. We will settle for nothing less. That's why Michigan Wheel aluminum props are stronger than original equipment props. Other manufacturers' products may look similar on the surface, but the high magnification photos below reveal startling differences in quality.



The tighter grain and compact structure of the Michigan Wheel prop on the left make it nearly twice as strong and less susceptible to damage than the ordinary prop on the right.

Michigan Wheel Exclusive Alloys	Tensile Strength	Yield Strength	Elongation
MICHALLUM® (Aluminum)	40,000 lbs. psi	18,000	9
MICHALLOY-S™ (15-5 Stainless Steel)	80,000 lbs. psi	70,000	3
MICHALLOY-K® (Bronze)	65,000 lbs. psi	25,000	20
NIBRAL	95,000 lbs. psi	40,000	23

MICHALLUM® ALUMINUM PROP

Tensile strength: 40,000 lbs psi

Less brittle

Blades flex under impact

Easy to repair

Easy to change pitch

ORDINARY ALUMINUM PROP

Tensile strength: 22,000 psi

More brittle

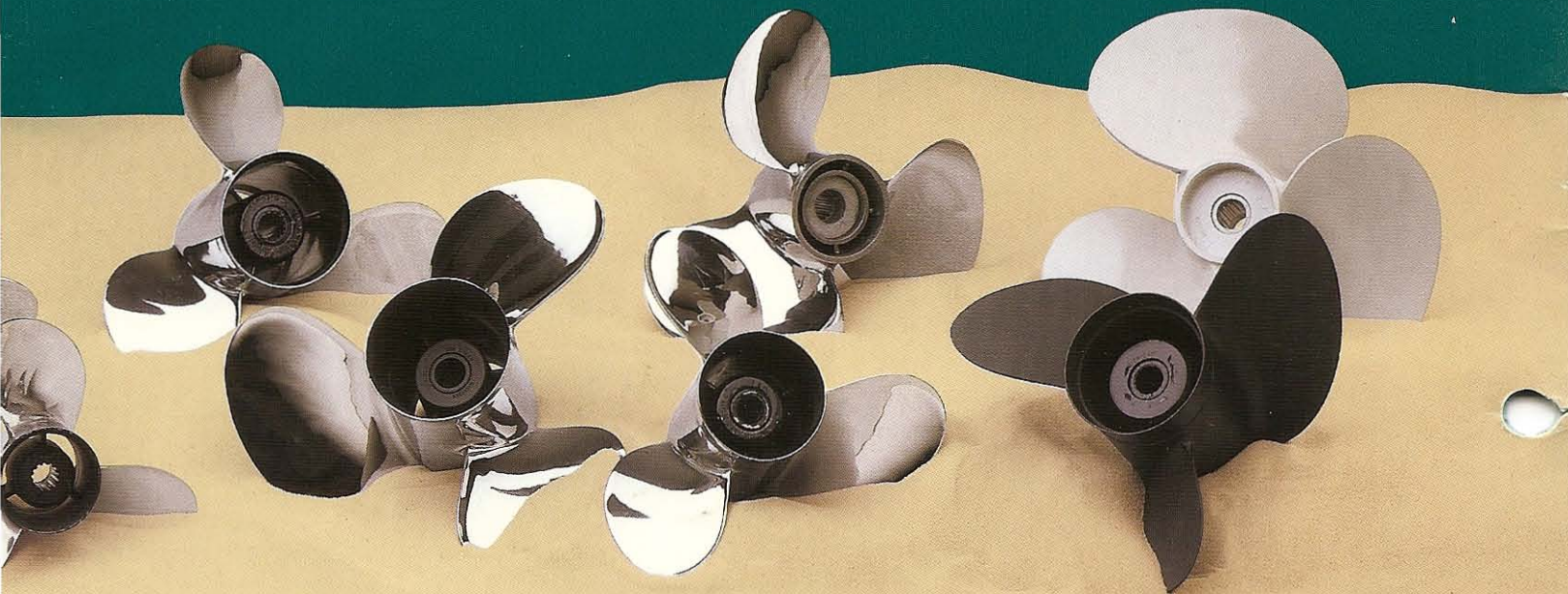
Blades tend to break and tear under impact

Difficult to repair

Breaks easily in straightening process

The photo on the left shows the metal used in a Michigan Wheel aluminum prop. The tight, uniform grain of the metal makes it nearly twice as strong as the typical aluminum prop shown on the right. Notice how the ordinary prop is powdered.

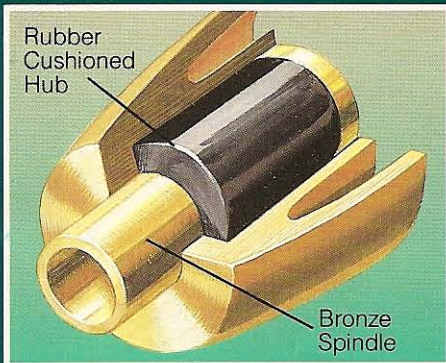
Our high-strength alloys cost us a little more. But that cost is insignificant when measured against the trouble-free service and easy repairability of Michigan Wheel props.



FIT THOUSANDS OF BOATS PROVEN

CUSHIONED HUBS PROTECT MOTORS, SHAFTS

Our cushioned hubs are another source of strength. The rubber hub bonded inside every Michigan Wheel prop helps protect expensive shafts, motors and gearboxes from damage caused by the propeller's impact with an object, and it absorbs the stress caused by shifting gears. With a Michigan Wheel prop, you get the strongest cushioned hubs in the industry.



Michigan Wheel's cushioned hub is made of a special bronze alloy for superior strength.

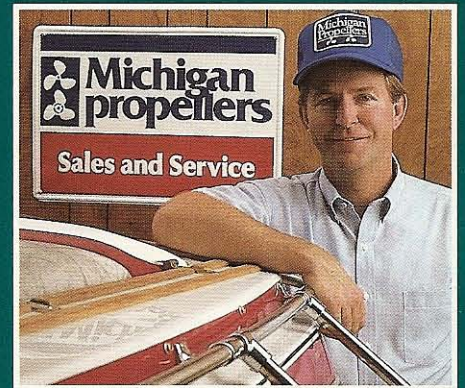
At Michigan Wheel we understand the beating your props take. That's why we make Michigan Wheel props this tough. The whole idea is to give you more time for boating fun.

WE SCIENTIFICALLY HELP YOU SELECT THE RIGHT PROP

The prop that came with your new engine isn't necessarily the one that's best suited to your needs. This is because many original equipment props, understandably, are made to meet a range of average conditions for many kinds of boats, hull styles and loads. This can limit their performance.

At Michigan Wheel, we have expertise and take the time to choose the right prop for your boat. With your input on our exclusive "Prop-It-Right" form, our distributors analyze all the variables that affect prop selection. Then they use that data to suggest a prop with the diameter, pitch, bore, material, etc., that will best fit your needs.

Your Michigan Wheel dealer is backed by a team of distributor experts who draw upon the largest body of propeller knowledge and research in the world, all with a single goal in mind—to provide you with the Michigan Wheel propeller that will give you the greatest enjoyment on the water.



WE SERVICE WHAT EVERYBODY ELSE SELLS.

When something happens to your original equipment propeller, you take it to your boat dealer. Regardless of manufacturer, what most dealers do is rely upon the international network of authorized Michigan Wheel service stations. There are over 70 such stations throughout the United States, Canada and overseas. So even your original equipment propeller will probably be repaired by Michigan Wheel.



Our exclusive Machined Pitch™ process allows Michigan Wheel to repair your prop to pinpoint accuracy.

Authorized Michigan Wheel service stations are operated by highly skilled and factory trained workers. Welding is handled by certified welders. But most important to Michigan propeller owners is the added fact that their propellers are indexed, which means that each repair station with their same matching pitch blocks can custom repair your Michigan propeller to its original specifications. This also applies to the repair and replacement of cushioned-hub propellers for gearshift engines.



Michigan Wheel motor brackets feature strong, sand cast aluminum brackets; skegs help lower engine repair costs.

FACTORY REPAIR.

Repair prices effective August 1, 1990.

OUTBOARD/STERN DRIVE Suggested factory list prices.

Diameter	Price	Cupped
6" -11"	\$21.00	\$27.00
11¼" -13¼"	27.00	34.00
13½" -15¾"	37.00	46.00
16" -19"	49.00	61.00
19¼" & larger	53.00	66.00
Cupping thru 14"	11.00 Net	
Cupping 14¼" & larger	15.00 Net	
Cupped & Nibral add 25%		
Dia. reduction thru 13" dia.	18.00 Net	
Dia. reduction 13¼" & larger	31.00 Net	
Blade thinning	20.00 Net	
Hub replacement only:		
thru 49 h.p.	27.00 Net	
50-95 h.p.	33.00 Net	
100 h.p. & over	42.00 Net	
Hub replacement in addition to prop repair:		
thru 25 h.p.	15.00 Net	
26-49 h.p.	27.00 Net	
50-95 h.p.	29.00 Net	
100 h.p. & over	33.00 Net	
(Stainless Steel 100% extra)		

INBOARD Suggested factory list prices.

Dia.	Price	Dia.	Price	Dia.	Price	Dia.	Price
10"	\$33.00	14"	\$49.00	18"	\$ 78.00	24"	\$143.00
11"	37.00	15"	55.00	19"	93.00	26"	169.00
12"	38.00	16"	64.00	20"	104.00	28"	175.00
13"	42.00	17"	71.00	22"	124.00	29" & up per quote	

(2-3 blade Manganese bronze) (Nibral, cupped, 4 blades—25% extra. Stainless Steel—100% extra) (above 28" on quotation) All welding net extra—time and material basis. Pitch change—new or undamaged at repair price. Pitch alterations must be accomplished at the owner's risk and knowledge that breakage can occur.

ALL REPAIRS PERFORMED AT OWNER'S RISK.

ACCESSORIES.

NO. 530 SLIDING MOTOR BRACKET. For standard transoms. For trolling or auxiliary motors on high transom boats. Bracket width 11". Natural mahogany finish, with sand-cast aluminum brackets.

	Price	Numeric
#530 (motors to 25 h.p.) 18" rails	\$166.00	301003
#530A (motors to 25 h.p.) 24" rails	\$182.00	301004

NO. 525 & 527 MOTOR BRACKET. Permanent mount for auxiliary or trolling motors. Natural hard maple finish, sand-cast aluminum brackets.

#525 (motors to 10 h.p.) 8½" width	\$ 75.00	301001
#527 (motors to 25 h.p.) 11" width	\$107.00	301002

REPLACEMENT ALUMINUM SKEGS (OUTBOARD/STERN DRIVE)

Evinrude-Johnson-OMC	Part No.	Price	Numeric
50 h.p. (2 Cyl.)	SK076	\$23.00	300001
V-4 Outboard Model 400 Stern drive	SK077	20.00	300002
V-6 Outboard Model 800 Stern drive	SK078	23.00	300003

Mercury-Mercruiser

In line 6 Cyl. — Outboards	SK083	23.00	300004
V-6 Outboard & Mercruiser (1983)	SK084	23.00	300005
Mercruiser (Thru 82)	SK085	23.00	300006

MICHIGAN WHEEL OUTBOARD AND STERN DRIVE INDEX. This two-document set lists every prop Michigan Wheel has produced and the corresponding specs. The first uses an alpha numeric index; the second uses the new, numeric index. Cost: \$7. Numeric No. **990041**.

Outboard

Motor	Page	Motor	Page
Aero	13	Miscellaneous	17
Archimedes	14	Nissan	13
Chrysler	6	Scott	13
Elgin	15	SeaRay	10
Eska	15	Sears	15
Evinrude	7	Suzuki	14
Force	6	Tohatsu	13
Honda	15	U.S. Marine	6
Johnson	7	Volvo-Penta	14
Mariner	12	Ward's, Sea-King	15
McCulloch	13	Yamaha	16
Mercury	10		

Stern Drive

Motor	Page	Motor	Page
BMW	22	Muncie Turbomarine	22
Chrysler	22	OMC Cobra	18
Eaton	23	OMC Sea Drive	19
Enfield	23	OMC Saildrive	19
Marine Drive Systems	19, 21, 22	Outboard Marine	19
Mercuriser Stern Drive	20	Perkins Z	23
Mercury Mercuriser	21	Volvo-Penta	23
Muncie	23	Yamaha	22

How to Read This Catalog

Example Application: 18' Runabout used mainly for skiing and cruising with the family.
1988, 120HP Johnson Outboard. Customer wants a cupped, aluminum propeller.

- 1) Determine what kind of motor you have and locate that section in the catalog.
- 2) Locate the section on the page that contains the horsepower and year of your motor.
- 3) Determine what size boat you have and how you use it. (fishing, waterskiing, cruising, etc...)
- 4) Find the boat size and use in the motor section that contains your motor and best describes your vessel and usage. You may also be able to match the part number of your original propeller as well.
- 5) Once this is located, read across to obtain the propeller that will be most suited for your application.
- 6) If stainless steel is desired, read across to the last column for the part number.
- 7) Use the Michigan Part Number to order your new propeller through the distributors listed in this catalog.

(EVINRUDE, JOHNSON CONTINUED)

OUTBOARD

Motor & Model	Year	Boat Size & Recommendation	Blids.	Dia & Pitch	Nearest OMC Equiv.	ALUMINUM		STAINLESS STEEL	
						Michigan Part No.	Nearest OMC Equiv.	Michigan Part No.	Michigan Part No.
85 HP V-4	69-80	Cruisers, Houseboats	4	14 x 10		DQ320	012074		
88 HP V-4	81 Thru	Cruisers, Houseboats	4	14 x 12		DQ328	012075		
90 HP V-4	81 Thru	Cruisers, Houseboats	3	14 x 11		PJ87	012047		
100 HP V-4	79-80	Cruisers, Houseboats	3	14 x 11		PJ79	012048		
100 HP V-4	88 Thru	Cruisers, Houseboats	3	14 x 13	382761				
110 HP V-4	86 Thru	Cruisers, Houseboats	3	14 x 13	382762	*PJ88C	011001		
115 HP V-4	73-85	24'-20' Bts.	3	13-3/4 x 15	391668	PJ80	012049		
115 HP V-4	90 Thru	24'-20' Bts.	3	13-3/4 x 15	382763	*PJ89C	011002	389949	013028
120 HP V-4	86 Thru	24'-20' Bts.	3	13-1/4 x 17	391198	PJ81	012050		
125 HP V-4	71-72	22'-19' Bts.-All Loads	3	13-1/4 x 17	382764	*PJ90C	011003	389948	013030
135 HP V-4	73-76	22'-19' Bts.-All Loads	3	13-1/4 x 17	382764	*PJ90C	011003	389948	013030
140 HP V-4	77-84	19'-17' Bts.-All Loads, Skis	3	13 x 19	391199	PJ82	012051		
140 HP V-4	86 Thru	19'-17' Bts.-All Loads, Skis	3	13 x 19	382765	*PJ91C	011004	389510	013033
Thru Hub Exhaust		18'-15' Bts.-All Loads, Skis	3	12-3/4 x 21	390896	*PJ83C	011005	389512	013034

* If currently using uncupped prop, use cupped prop having 2" less pitch. Boats with power trim use same pitch.

Numeric Part Number Definition

12 3 456		Last 3 Digits	
First 2 Digits	3rd Digit	Reserved for Part #	
01 OMC	09 Wards Sea King	1 Cup AL	
02 Mariner	10 Yamaha	2 Uncup AL	
03 Mercury	11 Honda	3 Cup SS	
04 McCulloch-Scott Aero	12 Chrysler Stern Drive	4 Uncup SS	
05 Sears-Elgin-Eska	13 Marine Drive System	5 Cup Bronze	
06 Suzuki	14 Tohatsu-Nissan	6 Uncup Bronze	
07 US Marine	15 Misc.	7 Cup Nibral	
08 Volvo-Penta-Archimedes	30 Skegs, Nuts	8 Uncup Nibral	

Motor & Model	Year	Boat Size & Recommendation	Blids.	Dia. & Pitch	ALUMINUM			STAINLESS STEEL				
					Nearest US Marine Equip.	Price	Michigan Part No.	Nearest US Marine Equip.	Price	Michigan Part No.		
3.5-3.6 HP	69-76	Standard Replacement	2	7 1/2 x 4 1/2	P-19	G20(LH)	\$42	072017				
3.5 HP	80 Thru	Standard Replacement	2	7 1/2 x 6 1/4	P-318	PC6	\$48	072021				
4, 4.4, 6, 6.6, 7, 7.5, 8 Splined Shaft	68 Thru	Standard Replacement	2	8 x 5	P-409(P-75)	PC9	\$48	072022				
5 HP	87 Thru	16'-14' Bts.-Light Loads	3	7 1/4 x 5 1/2	P-488	PC112	\$53	072123				
		Aux. - Work Boats	2	8 x 5	P-487	PC90	\$48	072126				
			2	8 x 5	P-75	PC5	\$48	072120				
5 HP	75-77	Standard Replacement	2	7 1/2 x 5 1/2		G30(LH)	\$44	152014				
5 1/2-6 HP	56-59	Standard Replacement	2	7 1/2 x 7		GC54	\$56	072018				
6 HP	64-67	Standard Replacement	2	7 1/2 x 7		GC54	\$56	072018				
6-10 HP Sailor	76-78	Sailboats	3	10 3/8 x 10	P-278	AMC308	\$74	072014				
Sailor 180-250	79 Thru	Sailboats	3	10 1/2 x 7	P-296	SMC46	\$74	072074				
6,7,5,9,2 HP	56-67	14'-12' Bts. - Light Loads	2	8 x 8		GC55	\$56	072019				
9.9 HP	68 Thru	14'-12' Bts. - Light Loads	2	8 1/4 x 8 1/4	P-70	PC12	\$49	072024				
10 HP	74-78	Standard Replacement	3	8 1/8 x 8 1/4	P-408	PC20	\$49	072026				
12 HP	78-79	Standard Replacement	2	8 1/4 x 8		PC10	\$49	072023				
12.9 HP	All Yrs.	Standard Replacement	2	8 1/4 x 8		PC10	\$49	072023				
15 HP	80 Thru	14'-12' Bts. - Light Loads	3	8 x 9	P-472	PC28	\$55	072122				
Splined Shaft		16'-14' Bts. - Light Loads	3	8 1/4 x 6	P-395	PC24	\$55	072121				
		Aux. - Work Boats	3	8 1/4 x 5	P-396	PC26	\$55	072125				
20-25 HP	68-78	Standard Replacement	3	8 1/2 x 8 1/2	P-324	AMC490	\$71	152002				
Splined Shaft		14'-12' Bts.-Light Loads	3	8 1/2 x 10	P-346	PR8	\$73	072028				
20-25 HP	79-81	Cruisers, Houseboats, Sailboats	3	10 1/2 x 7	P-296	SMC46	\$74	072074				
40-50 HP	61-65	17'-16' Bts.-All Loads, Skis	3	10 1/2 x 12	P-90	SMC715	\$83	152038				
Pin Shaft		16'-14' Bts.-All Loads, Skis	3	10 1/2 x 13		SMC713	\$83	152037				
30 HP	66 Thru	Cruisers, Houseboats, Sailboats	3	10 3/8 x 10	P-278	AMC308	\$74	072014				
35 HP	66 Thru	19'-17' Bts. - All Loads, Skis	3	10 3/8 x 11 1/2	P-287		\$76	072131	"Nibral"	\$175	078131	
45 HP	66 Thru	17'-16' Bts. - All Loads, Skis	3	10 3/8 x 12 1/2	P-293		\$76	072132				
Splined Shaft		16'-14' Bts. - All Loads, Skis	3	10 3/8 x 13 1/2	P-273		\$76	072133	"Nibral"	\$175	078133	
50 HP	82 Thru	16'-14' Bts. - All Loads, Skis	3	10 3/8 x 14 1/2			\$76	072134				
55-60 HP	66 Thru	16'-14' Bts. - Light Loads	3	10 1/2 x 15	P-275		\$76	072124				
2-piece lower unit		Light Runabouts--Light Loads	3	10 1/2 x 15			\$76	072124				
55-60 HP	74-79	17'-16' Bts. - All Loads, Skis	3	11 3/4 x 12	P-475	PR432	\$90	072114				
1-piece lower unit		16'-14' Bts. - All Loads, Skis	3	11 1/4 x 13	P-474	PR434	\$90	072068				
55,60,65 HP	78	17'-16' Bts. - All Loads, Skis	3	10 x 12	PS-522(P-522)	PR552	\$105	072069				
Splined Shaft		16'-14' Bts. - All Loads, Skis	3	10 x 13	PS-493(P-493)	PR553	\$105	072070				
1-piece lower unit	81 Thru	16'-14' Bts. - Light Loads	3	10 x 14	PS-494(P-494)	PR554	\$105	072071	P-496	SSC 614 C	\$373	073006
70 HP	91 Thru	19'-17' Bts. - All Loads, Skis	3	11 1/4 x 10	48-73132A4	PM600C	\$109	031015				
		18'-16' Bts. - All Loads, Skis	3	10 5/8 x 12	48-73134A4	PM612C	\$109	031016				
		18'-16' Bts. - All Loads, Skis	3	10 5/8 x 12					48-79792A5	SSM212C	\$304	033001
		17'-15' Bts. - All Loads, Skis	3	10 3/8 x 13	48-73136A4	PM613C	\$109	031017				
		17'-14' Bts. - All Loads	3	10 1/4 x 14	48-73138A4	PM614C	\$109	031018	48-76230A5		\$304	033028
		16'-14' Bts. - Light Loads	3	10 1/8 x 15	48-73140A4	PM615C	\$109	031019		"Nibral"	\$188	037014
		15'-13' Bts. - Light Loads	3	10 x 17	48-73144A4	PM617C	\$109	031020		"Nibral"	\$188	037015
80 HP	61-65	17'-16' Bts. - All Loads, Skis	3	12 1/8 x 14	P-84	PJ50	\$83	012033				
2-piece lower unit												
70 HP (1.73:1)	70-79	18'-15' Bts. - All Loads, Skis	3	13 1/8 x 13	P-391	PR76	\$129	072031				
75,85,105 HP (1.73:1)		17'-16' Bts. - All Loads, Skis	3	13 1/8 x 15	P-389	PR78	\$129	072032				
Splined Shaft		16'-14' Bts. - All Loads, Skis	3	13 1/8 x 17	P-372	PR80	\$129	072033	P-520	SSC 117 C	\$388	073001
2-piece lower unit		Light Runabouts-Light Loads	3	13 1/8 x 19	P-383	PR82	\$129	072034				
75,700 Skier (2:1) 1pc lower unit	79-80	19'-17' Bts. - All Loads, Skis	3	13 1/8 x 13	P-391	PR76	\$129	072031				
75 HP	70-79	18'-15' Bts. - All Loads, Skis	3	13 1/8 x 15	P-389	PR78	\$129	072032				
2-piece lower unit		17'-16' Bts. - All Loads, Skis	3	13 1/8 x 17	P-372	PR80	\$129	072033	P-520	SSC 117 C	\$388	073001
105-120 HP (1.73:1) Splined Shaft	70-77	16'-14' Bts. - All Loads, Skis	3	13 1/8 x 19	P-383	PR82	\$129	072034				
2-piece lower unit												
75 HP t	80-84	19'-17' Bts. - All Loads, Skis	3	14 x 13	PS-501(P-501)	PR276	\$130	072054				
1-piece lower unit		17'-16' Bts. - All Loads, Skis	3	13 3/4 x 15	PS-519(P-519)	PR278	\$126	072055				
85 HP t	78-87	16'-14' Bts. - All Loads, Skis	3	13 1/4 x 17	PS-623	SPC180	\$126	072107	P-539	SSC 315 IIC	\$354	073002
1-piece lower unit		16'-14' Bts. - Light Loads	3	13 x 19	PS-625	SPC182	\$126	072108	P-540	SSC 317 IIC	\$354	073003
		Hi-Performance Racing	3	13 x 21	PS-526(P-526)	SPC184	\$126	072109	P-527	SSC 319 IIC	\$354	073004
			3	13 x 21			\$126	072109	P-527	SSC 321 IIC	\$354	073005
90 HP (2:1)	73-77	22'-19' Bts. - All Loads	3	13 1/8 x 13	P-391	PR76	\$129	072031				
1-piece lower unit		19'-17' Bts. - All Loads, Skis	3	13 1/8 x 15	P-389	PR78	\$129	072032				
130-135 HP	73-77	18'-15' Bts. - All Loads, Skis	3	13 1/8 x 17	P-372	PR80	\$129	072033	P-520	SSC 117 C	\$388	073001
(1.73:1) 2-pc lower unit		17'-16' Bts. - All Loads, Skis	3	13 1/8 x 19	P-383	PR82	\$129	072034				
90 HP Charger	84-87	22'-19' Bts. - All Loads	3	14 x 13	PS-501(P-501)	PR276	\$130	072054				
105, 120, 135 HP t	77-78	19'-17' Bts. - All Loads	3	13 3/4 x 15	PS-519(P-519)	PR278	\$126	072055				
100, 115		19'-17' Bts. - All Loads	3	13 3/4 x 15						SSC 315 IIC	\$354	073002
140 HP t	78 Thru	17'-16' Bts. - All Loads, Skis	3	13 1/4 x 17	PS-623	SPC180	\$126	072107	P-539	SSC 317 IIC	\$354	073003
125 HP	85-87	16'-14' Bts. - All Loads, Skis	3	13 x 19	PS-625	(SPC182)	\$126	072108	P-540	SSC 319 IIC	\$354	073004
1-piece lower unit		16'-14' Bts. - Light Loads	3	13 x 21	PS-626	SPC184	\$126	072109	P-527	SSC 321 IIC	\$354	073005
85, 125 HP	88 - 89	22'-17' Bts. - All Loads, Skis	3	13 1/2 x 15	P-669*		\$116	*071035				
90, 120 HP	90 Thru	22'-17' Bts. - All Loads, Skis	3	13 1/2 x 15	P-692		\$111	072127				
150 HP	89 Thru	22'-17' Bts. - All Loads, Skis	3	13 3/4 x 15					P-664		\$340	073007
90 HP L-Drive	89 Thru	20'-16' Bts. - All Loads, Skis	3	13 1/2 x 17			\$116	*071036				
120 HP L-Drive	89 Thru	20'-16' Bts. - All Loads, Skis	3	13 1/2 x 17	P-685		\$111	072128				
150 HP L-Drive	91 Thru	20'-16' Bts. - All Loads, Skis	3	13 1/4 x 17			\$116	*071037	P-668		\$340	073008
		18'-16' Bts. - All Loads, Skis	3	13 x 19			\$111	072129	P-540		\$340	073009
		18'-16' Bts. - All Loads, Skis	3	13 x 19	P-686-1		\$111	072129				
* Cupped Propeller		To 16' Bts. - All Loads, Skis	3	12 5/8 x 21	P-694*		\$116	*071038				
		To 16' Bts. - All Loads, Skis	3	12 5/8 x 21	P-693		\$111	072130				
		To 16' Bts. - All Loads, Skis	3	13 x 21					P-511		\$340	073010

* These propellers require a spacer (normally furnished with engine) between prop hub and shaft nut. * If currently using uncupped propeller, use cupped propeller with 2" less pitch. Boats with power trim use same pitch.

Motor & Model	Year	Boat Size & Recommendation	Blds.	Dia & Pitch	ALUMINUM			STAINLESS STEEL		
					Nearest OMC Equiv.	Price	Michigan Part No.	Nearest OMC Equiv.	Price	Michigan Part No.
40 HP 2 Cyl.	84 Thru	Cruisers, Houseboats	3	13 x 11	386907	PJ58 \$90	012036			
48 HP	87 Thru	18'-15' Bts.-All Loads, Skis	3	12-1/2 x 13	386909	PJ59 \$90	012037	390849	\$274	013024
50 HP 2 Cyl.	75 Thru	17'-14' Bts.-All Loads, Skis	3	12-1/4 x 15	386786	PJ60 \$90	012038	390850	\$274	013010
55 HP 2 Cyl.	76-79	15'-13' Bts.-Light Loads	3	11-3/4 x 17	386841	PJ61 \$90	012039	390851	\$274	013026
60 HP 2 Cyl.	80-85	14'-12' Bts.-Light Loads	3	11-1/2 x 19	386908	PJ62 \$90	012040			
75 HP 3 Cyl.	86 Thru		3	11-1/4 x 19				390852	\$274	013032
Sprint Formula E Small Gear Case Thru Hub Exhaust	86 Thru		3							
45 HP 2 Cyl.* *Commercial	86 Thru	Cruisers, Houseboats	4	14 x 10		DQ320 \$148	012074			
50 HP 2 Cyl.	71-74	Cruisers, Houseboats	3	14 x 11	382761	PJ87 \$100	012047			
50 HP 2 Cyl.*	77-79	Cruisers, Houseboats	3	14 x 13	382762	PJ79 \$100	012048			
55 HP 2 Cyl.* *Commercial	80 Thru	Cruisers, Houseboats	3	14 x 13	391668	*PJ88C \$105	011001			
		22'-19' Bts.-All Loads	4	14 x 12		DQ328 \$148	012075			
55 HP 3 Cyl.	68-69	19'-17' Bts.-All Loads, Skis	3	13-3/4 x 15	382763	PJ80 \$100	012049			
60 HP 3 Cyl.	70-71	19'-17' Bts.-All Loads, Skis	3	13-3/4 x 15	391198	*PJ89C \$105	011002	389949	\$335	013028
60 HP 3 Cyl.	86 Thru	19'-17' Bts.-All Loads, Skis	3	13-3/4 x 15	391198	*PJ89C \$105	011002			
65 HP 3 Cyl.	72-73	18'-15' Bts.-All Loads, Skis	3	13-1/4 x 17	382764	PJ81 \$100	012050			
65 HP 3 Cyl.* *Commercial	84 Thru	18'-15' Bts.-All Loads, Skis	3	13-1/4 x 17	391199	*PJ90C \$105	011003	389948 (13-3/8 x 17)	\$335	013030
		16'-14' Bts.-All Loads, Skis	3	13 x 19	382765	PJ82 \$100	012051			
70 HP 3 Cyl.	74 Thru	16'-14' Bts.-All Loads, Skis	3	13 x 19	390896	*PJ91C \$105	011004	389510	\$335	013033
75 HP 3 Cyl. Lg. Gear Case	75-84	16'-14' Bts.-All Loads, Skis	3	12-3/4 x 21	389788	*PJ83C \$105	011005	389512	\$335	013034
All Thru Hub Exhaust										
60,65,75,80, 85,90 HP V-4	60-68	24'-20' Bts.-One Engine	3	10-1/2 x 8		SMC864 \$76	012107			
		19'-17' Bts.-All Loads, Skis	3	10 x 9-1/4	379260	tPJ74 \$60	012042			
t Small Hub Prop --uses special small nut-- Part No. NP74 \$14.00 Pin Drive		19'-17' Bts.-All Loads, Skis	3	9-1/2 x 10	593437	PJ78 \$65	012046			
		19'-17' Bts.-All Loads, Skis	3	10-1/4 x 9		SMC862 \$76	012106			
		19'-17' Bts.-All Loads, Skis	3	10-1/4 x 10	378040	PJ75 \$65	012043			
		17'-16' Bts.-All Loads, Skis	3	10 x 11	381446	tPJ73 \$60	012041			
		17'-16' Bts.-All Loads, Skis	3	10 x 11	377978	PJ76 \$61	012044			
		16'-14' Bts.-All Loads, Skis	3	10 x 12	378039	PJ77 \$61	012045			
100 HP V-4 Pin Drive	66-68	24'-20' Bts.-One Engine	3	14 x 11	382676	PR115 \$150	012089			
		24'-20' Bts.-One Engine	3	14 x 12	382017	PR118 \$150	012090			
		19'-17' Bts.-All Loads, Skis	3	13 x 14	381442	PR105 \$150	012087			
		16'-14' Bts.-All Loads, Skis	3	12-1/2 x 16	381020	PR109 \$150	012088			
85 HP V-4	69-80	Cruisers, Houseboats	4	14 x 10		DQ320 \$148	012074			
85 HP V-4	91 Thru	Cruisers, Houseboats	4	14 x 12		DQ328 \$148	012075			
88 HP V-4	81 Thru	Cruisers, Houseboats	3	14 x 11	382761	PJ87 \$100	012047			
90 HP V-4	81 Thru	Cruisers, Houseboats	3	14 x 11	382761	PJ87 \$100	012047			
100 HP V-4	79-80	Cruisers, Houseboats	3	14 x 13	382762	PJ79 \$100	012048			
100 HP V-4	88 Thru	Cruisers, Houseboats	3	14 x 13	391668	*PJ88C \$105	011001			
110 HP V-4	86-89	24'-20' Bts.	3	13-3/4 x 15	382763	PJ80 \$100	012049			
115 HP V-4	73-85	24'-20' Bts.	3	13-3/4 x 15	391198	*PJ89C \$105	011002	389949	\$335	013028
115 HP V-4	90 Thru	24'-20' Bts.	3	13-3/4 x 15	391198	*PJ89C \$105	011002			
120 HP V-4	86 Thru	22'-19' Bts.-All Loads	3	13-1/4 x 17	382764	PJ81 \$100	012050			
125 HP V-4	71-72	22'-19' Bts.-All Loads	3	13-1/4 x 17	391199	*PJ90C \$105	011003	389948 (13-3/8 x 17)	\$335	013030
135 HP V-4	73-76	19'-17' Bts.-All Loads, Skis	3	13 x 19	382765	PJ82 \$100	012051			
140 HP V-4	77-84	19'-17' Bts.-All Loads, Skis	3	13 x 19	390896	*PJ91C \$105	011004	389510	\$335	013033
140 HP V-4 Thru Hub Exhaust	86 Thru	18'-15' Bts.-All Loads, Skis	3	12-3/4 x 21	389788	*PJ83C \$105	011005	389512	\$335	013034
100 HP V-4* 120-140 HP V-4 140 (25") V-4 V-6 Gearcase *Commercial	84 Thru 1985 89 Thru	Cruisers, Houseboats Cruisers, Houseboats Cruisers, Houseboats	3 3 3	15-1/2 x 10 15-1/2 x 13 15-1/2 x 13	387158 391536 391535	*PJ199C \$180 PJ200 \$123 PJ200C \$123	011015 012059 011016			
		Cruisers, Houseboats	3	15-1/2 x 15		PJ201C \$123	011006	174926	\$359	013052
*150 HP V-6 GT, XP 150 V-6	78 Thru 86 Thru	26'-20' Bts.-All Loads, Skis	3 3	15 x 17 15 x 17	391200	PJ202C \$123	011007	391290	\$359	013044
155 HP V-6* 175 HP V-6	84 Thru 77 Thru	22'-18' Bts.-All Loads, Skis	3 3	14-1/2 x 19 14-1/2 x 19	391201	PJ203C \$123	011008	389924	\$359	013046
GT, XP 175 V-6 *Commercial	89 Thru	22'-18' Bts.-All Loads, Skis	3	14-1/2 x 19						
185 HP V-6	84-85	19'-17' Bts.-All Loads, Skis	3	14-1/4 x 21	391202	PJ204C \$123	011009			
200 HP V-6	76 Thru	19'-17' Bts.-All Loads, Skis	3	14-1/4 x 21				389923	\$359	013048
GT, XP 200 V-6	86 Thru	18'-15' Bts.-All Loads, Skis	3	14-1/4 x 23	391203	PJ205C \$123	011010			
225 HP V-6	86 Thru	18'-15' Bts.-All Loads, Skis	3	14-1/4 x 23				389019	\$359	013050
235 HP V-6	78-85									
2.6L V-6	84-85									
250 HP V-8	91 Thru									
275 HP V-8	86-90									
GT, XP300 V-8 *3.6L V-8 Thru-Hub Exhaust	86-90									
Left Hand Rotation Propellers			3	15 x 15				174927	\$359	013051
			3	15 x 17				431930	\$359	013043
All V-6 & V-8	87 Thru		3	14-1/2 x 19				390822	\$359	013045
V-4 (V-6 Gearcase)	88 Thru		3	14-1/4 x 21				390821	\$359	013047
Couter-Rotation Outboards			3	14-1/4 x 23				390823	\$359	013049

* If currently using uncupped prop, use cupped prop having 2" less pitch. Boats with power trim use same pitch.
 • 2 1/2" of skeg must be removed for proper fit. Use thrust washer 333592.

Continued on next page.

STAINLESS STEEL

OMC OUTBOARD ("Heavy-Duty Special" Hard to Plane Boats)

Motor & Model	Year	Boat Size (Speed MPH)	Mat'l.	Blds	Dia. & Pitch	Price	LH Part No.	RH Part No.
120-140 HP V-4 Thru Hub Exhaust V-6 Gearcase	86 Thru	26'-24' Twin (36-45)	S.S.	3	15 X 19	\$440	013021	013016
		24'-22' Single (33-40)	S.S.	3	15 1/4 X 17	\$440		013015
		24'-22' Twin (36-45)	S.S.	3	15 X 19	\$440		013016
		22'-20' Single (36-45)	S.S.	3	15 X 19	\$440	013023	013016
		22'-20' Twin (39-50)	S.S.	3	14 1/2 X 21	\$440		013017
21'-18' Single (39-50)	S.S.	3	14 1/2 X 21	\$440		013017		
150-235 HP V-6 Thru Hub Exhaust	78 Thru	32'+ Twin (35-45)	S.S.	3	15 1/4 X 17	\$440	013019	013015
		28'-24' Single (35-45)	S.S.	3	15 1/4 X 17	\$440		013015
		28'-24' Twin (40-48)	S.S.	3	15 X 19	\$440	013021	013016
		24'-22' Single (40-48)	S.S.	3	15 X 19	\$440		013016
		24'-22' Twin (45-53)	S.S.	3	14 1/2 X 21	\$440		013017
22'-20' Single (45-53)	S.S.	3	14 1/2 X 21	\$440		013017		
250 HP - 3.6 GT V-8 Thru Hub Exhaust	85 Thru	32'+ Twin (38-45)	S.S.	3	15 1/4 X 17	\$440	013019	013015
		30'-26' Single (38-45)	S.S.	3	15 1/4 X 17	\$440		013015
		28'-24' Twin (43-45)	S.S.	3	15 X 19	\$440	013021	013016
		24'-22' Single (43-45)	S.S.	3	15 X 19	\$440		013016
		28'-24' Twin (48-60)	S.S.	3	14 1/2 X 21	\$440		013017
22'-20' Single (48-60)	S.S.	3	14 1/2 X 21	\$440		013017		

High Performance Propellers V-4

STAINLESS STEEL

Model	Year	Boat Speed (MPH)	Nearest Equiv. Part No.	Mat'l.	Blades	Dia. & Pitch	Price	Michigan Part No.
85 HP V-4	69-80	36-46	394758	S.S.	3	13 1/4 X 17	\$399	013027
85 HP	91 Thru	42-52	394759	S.S.	3	13 1/4 X 19	\$399	013029
88 HP	81 Thru	48-58	394760	S.S.	3	13 1/4 X 21	\$399	013031
90 HP V-4	81 Thru							
100 HP V-4	79-80							
100 HP V-4	88 Thru							
110 HP V-4	86-89							
115 HP V-4	73-85							
115 HP V-4	90 Thru							
120 HP V-4	86 Thru							
125 HP V-4	71-72							
135 HP V-4	73-76							
140 HP V-4	77-84							
140 HP V-4	86 Thru							
Thru Hub Exhaust								

II™ (High Performance Propellers)

STAINLESS STEEL

Model	Year	Boat Speed (MPH)	Nearest Equiv. Part No.	Mat'l.	Blades	Dia. & Pitch	Price	Michigan Part No.
150-235 HP V-6	76 Thru	42-52	394753	S.S.	3	14 1/4 X 20	\$444	013054
		46-57	394754	S.S.	3	14 1/4 X 22	\$444	013056
XP 150		50-63	394755	S.S.	3	14 1/4 X 24	\$444	013058
GT150		54-70	394756	S.S.	3	14 1/4 X 26	\$444	013060
2.6 XP	84 Thru	51-63	394754	S.S.	3	14 1/4 X 22	\$444	013056
2.6 GT		55-66	394755	S.S.	3	14 1/4 X 24	\$444	013058
250 HP-3.6 GT V-8 Thru Hub Exhaust		60-72+	394756	S.S.	3	14 1/4 X 26	\$444	013060

High Performance Hole Shot 4-Blade Propellers

STAINLESS STEEL

Model	Year	Boat Speed (MPH)	Nearest Equiv. Part No.	Mat'l.	Blades	Dia. & Pitch	Price	Michigan Part No.
100 HP V-4*	84 Thru	50-62	431717 Shooter	S.S.	4	13 3/4 X 22	\$477	**013036
120-140 HP V-4	1985	55-67	431718 Shooter	S.S.	4	13 3/4 X 24	\$477	**013038
140 (25") V-4 V-6 Gearcase *Commercial	89 Thru	60-72	431719 Shooter	S.S.	4	13 3/4 X 26	\$477	**013040
150 HP V-6	78 Thru							
GT, XP 150 V-6	86 Thru							
155 HP V-6*	84 Thru							
175 HP V-6	77 Thru							
GT, XP 175 V-6 *Commercial	89 Thru							
185 HP V-6	84-85							
200 HP V-6	76 Thru							
GT, XP 200 V-6	86 Thru							
225 HP V-6	86 Thru							
235 HP V-6	78-85							
2.6L V-6	84-85							
250 HP V-8	91 Thru							
275 HP V-8	86-90							
GT, XP300 V-8	86-90							
3.6L V-8 Thru-Hub Exhaust								

**Forward Thrust Washer A-9500-111 comes with propeller and replaces OMC Forward Thrust Washer.

Motor & Model	Year	Boat Size & Recommendation	Blds. Dia. & Pitch	ALUMINUM				STAINLESS STEEL							
				Nearest Merc. Equiv.	Price	Michigan Part No.	Nearest Merc. Equiv.	Price	Michigan Part No.						
40	73-75	Standard Replacement	2 8-1/4 x 6	48-63494A10	PM 8	\$49	032014								
45	73-81														
39-40	68-72	Standard Replacement	2 8-1/4 x 6	48-47944A1	PM 16	\$64	032017								
39	64-67	Standard Replacement	2 8 x 6	48-45890A1	PM 4	\$58	032012								
60	68	Standard Replacement	2 7-7/8 x 8	48-47938A1	PM 18	\$56	032018								
60	61-67	16'-14' Bts. - All Loads	2 8 x 6	48-45890A1	PM 4	\$58	032012								
		Standard Replacement	2 8 x 8	48-31105A1	PM 6	\$58	032013								
Mark 28, 28A 200-250	58-62	16'-14' Bts. - All Loads, Skis	3 9-1/4 x 9	48-28037A1	PM 27(LH)	\$74	032025								
		16'-14' Bts. - Light Loads	2 9-1/2 x 11	48-28036A1	PM 28(LH)	\$74	032027								
		14'-12' Bts. - Light Loads	2 9-1/2 x 12	48-28038A1	PM 29(LH)	\$74	032028								
Merc 7.5, 9.8, 110	68-85	Standard Replacement	2 9 x 9	48-47922A10	PM 21	\$42	032021								
	68-79	Light Runabouts - Light Loads	2 9 x 10	48-47926A10	PM 19	\$42	032019								
Merc 110	62-67	16'-14' Bts. - All Loads, Skis	3 9 x 7	48-47670A10	PM 20	\$66	032020								
		14'-12' Bts. - Light Loads	2 9 x 10	48-32364A1	PM 11	\$49	032016								
Merc 20	63-81	16'-14' Bts. - All Loads, Skis	3 9-1/4 x 9	48-31504A1	PM 10	\$49	032015								
		Standard Replacement	2 10 x 11	48-86962A4	PM 26	\$68	032111								
6 HP 8 HP 9.9 HP 15 HP	86-87	Houseboat, Workboat	3 9-3/4 x 5-1/2	48-42518A11		\$63	032130								
	86 Thru	14'-20' Bts. - All Loads	3 9-1/4 x 7	48-42520A11		\$63	032131								
	86 Thru	Standard Replacement	3 9 x 9	48-42522A11		\$63	032132								
	89 Thru	14'-16' Bts. - All Loads	3 9 x 10-1/2	48-17874A12		\$63	032133								
18 HP	80-85	19'-15' Bts.	3 10-3/8 x 11	48-19638A40	PM 24C	\$87	031049								
20 HP	86 Thru	17'-13' Bts.	3 10-3/8 x 13	48-19640A40	PM 23C	\$87	031048								
25 HP	80 Thru	Up to 14' Bts.	3 10-1/4 x 14-1/2	48-19642A40	PM 22C	\$87	031047								
Thru Hub Exhaust															
Mark 35A, Mark 50, 55, Mark 58, 58A 300, 350, 400, 500 All 11 Spline	56-61	17'-16' Bts. - All Loads, Skis	3 10 x 10	48-22575A2	AMC 580S	\$114	032077								
		16'-14' Bts. - All Loads, Skis	3 10 x 11		AMC 577S	\$114	032075								
		16'-14' Bts. - All Loads, Skis	2 10-1/4 x 10	48-29985A2	PM 56	\$87	032035								
		16'-14' Bts. - Light Loads	2 10-1/4 x 12	48-22914A2	PM 55	\$87	032034								
300, 350 400, 450, 500 Prop Exhaust	62-69	Cruisers, Houseboats, Sailboats	3 10-1/4 x 9	48-32194A1	PR 31	\$99	032083								
		19'-17' Bts. - All Loads, Skis	3 10-1/4 x 10	48-33774A1	PR 33	\$99	032084								
		17'-16' Bts. - All Loads, Skis	3 10-1/4 x 11	48-38098A1	PR 35	\$99	032085								
		16'-14' Bts. - All Loads, Skis	3 10-1/4 x 12	48-38094A1	PR 37	\$99	032086								
		16'-14' Bts. - Light Loads	3 10-1/4 x 13	48-38090A1	PR 39	\$99	032087								
14'-12' Bts. - Light Loads	3 10-1/4 x 15	48-38086A1	PR 43	\$99	032088										
400-402-500 Prop Exhaust	70-73	24'-20' Bts. - All Loads	3 10-1/4 x 10	48-56246A1	PR333	\$97	032096								
		19'-17' Bts. - All Loads, Skis	3 10-1/4 x 11	48-56244A1	PR335	\$97	032097								
		17'-16' Bts. - All Loads, Skis	3 10-1/4 x 12	48-56240A1	PR337	\$97	032098								
		16'-14' Bts. - All Loads, Skis	3 10-1/4 x 13	48-56236A1	PR339	\$97	032099								
		16'-14' Bts. - Light Loads	3 10-1/4 x 15	48-56232A1	PR343	\$97	032100								
		14'-12' Bts. - Light Loads	3 10-3/4 x 17	48-56230A1	PR345	\$97	032101								
402-500 650	74-76	22'-19' Bts. - All Loads	3 12-1/4 x 10	48-61812A1	PM530	\$105	032045								
	72-76	19'-17' Bts. - All Loads, Skis	3 12 x 11	48-61814A1	PM527	\$105	032044	48-63548A1	SMC439(br)	\$164	036009				
402-500-700 HP 35 HP (2 Cyl. In Line) 40 HP (2 Cyl. In Line) (4 Cyl. In Line) 45 HP (4 Cyl. In Line) 50 HP (4 Cyl. In Line) 50 HP (3 Cyl. In Line) 60 HP (3 Cyl. In Line) 70 HP (3 Cyl. In Line)	77-84 84-89	19'-17' Bts. - All Loads, Skis	3 11-1/4 x 10	48-61816A1	PM524	\$105	032043	48-61818A1	PM521	\$105	032042	48-63544A1	SMC437(br)	\$164	036007
		17'-16' Bts. - All Loads, Skis	3 11-3/4 x 12	48-61818A1	PM518	\$105	032041	48-61820A1	PM515	\$105	032040	48-63542A1	SMC436(br)	\$164	036006
		18'-15' Bts. - All Loads, Skis	3 11-1/2 x 13	48-61822A1	PM515	\$105	032040	48-61824A1	PM513	\$105	032039	48-63540A1	SMC435(br)	\$164	036005
		16'-14' Bts. - Light Loads	3 11 x 15	48-61824A1	PM513	\$105	032039	48-61824A1	PM513	\$105	032039	48-63538A1	SMC434(br)	\$164	036004
		15'-13' Bts. - Light Loads	3 10-3/4 x 16	48-73132A4	PM600C	\$109	031015	48-73134A4	PM612C	\$109	031016		"Nibral"	\$188	037010
		14'-12' Bts. - Light Loads	3 10-5/8 x 12	48-73136A4	PM613C	\$109	031017	48-73138A4	PM614C	\$109	031018	48-79792A5	SSM212C	\$304	033001
		17'-15' Bts. - All Loads, Skis	3 10-3/8 x 13	48-73138A4	PM614C	\$109	031018	48-73140A4	PM615C	\$109	031019	48-76230A5		\$304	033028
		17'-14' Bts. - All Loads	3 10-1/4 x 14	48-73140A4	PM615C	\$109	031019	48-73144A4	PM617C	\$109	031020		"Nibral"	\$188	037014
650 4 Cyl. (2:1) 800-850 6 Cyl. 900-1150 (All 1.78:1 Gear) ** Use Thrust Washer 65091 * Use Thrust Washer 13191A1	61-70 Thru 72 Thru 77	24'-20' Bts.	3 13 x 11	48-35936A3	**PR151	\$111	**032089								
		22'-19' Bts.	3 13 x 13	48-32392A3	**PR153	\$111	**032090								
		19'-17' Bts. - All Loads, Skis	3 13 x 15	48-32390A3	**PR155	\$111	**032091								
		19'-17' Bts. - All Loads, Skis	3 13 x 15		**PR155C	\$119	**031001								
		19'-17' Bts. - All Loads, Skis	3 13-3/4 x 15												
		17'-16' Bts. - All Loads, Skis	3 13 x 17	48-32264A3	**PR157	\$111	**032092								
		17'-16' Bts. - All Loads, Skis	3 13 x 17		**PR157C	\$119	**031002								
		17'-16' Bts. - All Loads, Skis	3 13-1/4 x 17												
		18'-15' Bts. - All Loads, Skis	3 13 x 19	48-32750A3	**PR159	\$111	**032093								
		18'-15' Bts. - All Loads, Skis	3 13 x 19		**PR159C	\$119	**031003								
		16'-14' Bts. - All Loads, Skis	3 13 x 21	48-32746A3	**PR161	\$111	**032094								
		16'-14' Bts. - All Loads, Skis	3 13 x 21		**PR161C	\$119	**031004								

† Requires High Performance Trim Tab C46399A1 for Proper Fit.

Continued on next page.

Motor & Model	Year	Boat Size & Recommendation	Blds. Dia. & Pitch	ALUMINUM			STAINLESS STEEL		
				Nearest Merc. Equiv.	Price	Michigan Part No.	Nearest Merc. Equiv.	Price	Michigan Part No.
650 3 Cyl. (2.3:1 Gear)	Thru 71	Cruisers, Houseboats	3 13 x 11	48-35936A3	**PR151	\$111	**032089		
800-850 4 Cyl. (2.3:1 Gear)	72-77	24'-20' Bts.	3 13 x 13	48-32392A3	**PR153	\$111	**032090		
1000-1100 1150-1250 (2:1 Gear)	Thru 77	22'-19' Bts.	3 13 x 15	48-32390A3	**PR155	\$111	**032091		
1350 (1.78:1 Gear)	Thru 77	22'-19' Bts.	3 13-3/4 x 15		**PR155C	\$119	**031001	t*SSM615IIC	\$361 t*033016
** Use Thrust Hub 65091		19'-17' Bts. - All Loads, Skis	3 13 x 17	48-32264A3	**PR157	\$111	**032092		
* Use Thrust Washer 13191A1		19'-17' Bts. - All Loads, Skis	3 13 x 17		**PR157C	\$119	**031002		
		19'-17' Bts. - All Loads, Skis	3 13-1/4 x 17					t*SSM617IIC	\$361 t*033017
		17'-16' Bts. - All Loads, Skis	3 13 x 19	48-32750A3	**PR159	\$111	**032093		
		17'-16' Bts. - All Loads, Skis	3 13 x 19		**PR159C	\$119	**031003	*SSM619IIC	\$361 *033018
		18'-15' Bts. - All Loads, Skis	3 13 x 21	48-32746A3	**PR161	\$111	**032094		
		18'-15' Bts. - All Loads, Skis	3 13 x 21		**PR161C	\$119	**031004	*SSM621IIC	\$361 *033019
		16'-14' Bts. - All Loads, Skis	3 13 x 23	48-65736A1	**PR163	\$111	**032095		
Mark 78, 78A 75,75A, 600	57-60	16'-14' Bts. - All Loads, Skis	3 12-1/2 x 15		SMC 885	\$110	082035		
70 HP 3 Cyl.	87-89	24'-19' Bts. - All Loads	3 13-3/4 x 15	48-77342A4	t*PM315C	\$118	t*031041	t*SSM615IIC	\$361 t*033016
75 HP 3 Cyl.	90 Thru	20'-17' Bts. - All Loads, Skis	3 13-1/4 x 17	48-77344A4	t*PM317C	\$118	t*031042	t*SSM617IIC	\$361 t*033017
75 HP In Line 4	84-86	19'-16' Bts. - All Loads, Skis	3 13 x 19	48-77346A4	*PM319C	\$118	*031043	*SSM619IIC	\$361 *033018
80 HP In Line 4	78-83	18'-15' Bts. - All Loads, Skis	3 12-3/4 x 21	48-77348A4	*PM321C	\$118	*031044		
80 HP 3 Cyl.	87-89	18'-15' Bts. - All Loads, Skis	3 13 x 21					*SSM621IIC	\$361 *033019
90 HP In Line 6	78-86	Light Runabouts - Light Loads	3 12-1/2 x 23	48-77350A4	*PM323C	\$118	*031045		
90 HP 3 Cyl.	87 Thru								
100 HP In Line 4	88 Thru								
115 HP In Line 6	78-89								
115 HP In Line 4	88 Thru								
* Use Thrust Washer 13191A1									
1400-1500 (2:1 Gear)	Thru 77	Cruisers, Houseboats	3 13 x 13	48-32392A3	**PR153	\$111	**032090		
In Line 6 Cyl.		24'-20' Bts.	3 13 x 15	48-32390A3	**PR155	\$111	**032091		
** Use Thrust Hub 65091		24'-20' Bts.	3 13-3/4 x 15		**PR155C	\$119	**031001		
* Use Thrust Washer 13191A1		22'-19' Bts. - All Loads	3 13 x 17	48-32264A3	**PR157	\$111	**032092	t*SSM615IIC	\$361 t*033016
		22'-19' Bts. - All Loads	3 13 x 17		**PR157C	\$119	**031002		
		22'-19' Bts. - All Loads	3 13-1/4 x 17					t*SSM617IIC	\$361 t*033017
		19'-17' Bts. - All Loads, Skis	3 13 x 19	48-32750A3	**PR159	\$111	**032093		
		19'-17' Bts. - All Loads, Skis	3 13 x 19		**PR159C	\$119	**031003	*SSM619IIC	\$361 *033018
		18'-15' Bts. - All Loads, Skis	3 13 x 21	48-32746A3	**PR161	\$111	**032094		
		18'-15' Bts. - All Loads, Skis	3 13 x 21		**PR161C	\$119	**031004	*SSM621IIC	\$361 *033019
		17'-16' Bts. - All Loads, Skis	3 13 x 23	48-65736A1	**PR163	\$111	**032095		
135 HP	87 Thru	30'+(40-45MPH) Sgl. or Twin	3 15-1/4 x 17					SSM 272C	\$458 033020-1
150 HP V-6	78 Thru	30'-28'(45-50 MPH) Sgl. or Twin	3 15 x 19					SSM 292C	\$458 033021-1
175 HP V-6	78-81	28'-24'(50-55 MPH) Sgl. or Twin	3 14-1/2 x 21					SSM 312C	\$458 033022-1
175 HP V-6	85 Thru								
200 HP V-6	78 Thru	Cruisers, Houseboats	3 16 x 11	48-78112A4	PM 211C	\$136	031021		
220 HP V-6	87-88	Cruisers, Houseboats	3 16 x 13	48-78114A4	PM 213C	\$136	031022		
225 HP V-6	81-82	Cruisers, Houseboats	3 15-1/4 x 15	48-78116A4	PM 215C	\$136	031023		
Merc Laser									
200 HP XRI	87 Thru	Cruisers, Houseboats	3 14-1/2 x 15					48-16312A5	SSM 245C \$407 033002-1
300 HP V-6	83	Cruisers, Houseboats	3 14-1/2 x 17	48-78118A4	PM 217C	\$136	031024	48-16314A5	SSM 247C \$407 033003-1
3.4 Litre	84-86	Cruisers, Houseboats	3 14 x 19	48-78120A4	PM 219C	\$136	031025	48-16316A5	SSM 249C \$407 033004-1
*Use Thrust Washer 13171		21'-19' Bts. - All Loads, Skis	3 13-3/4 x 21	48-78122A4	PM 221C	\$136	031026	48-16318A5	SSM 251C \$407 033005-1
		20'-18' Bts. - All Loads, Skis	3 13-1/2 x 23	48-78124A4	PM 223C	\$136	031027	48-16320A5	SSM 253C \$407 033006-1
250,275 HP WAVE™	90 Thru	21'-24' Bts.-All Loads, Skis	3 15 1/4 x 19					48-13700-A41	\$446 033030
Performance Propellers		18'-22' Bts.-All Loads, Skis	3 14 3/4 x 21					48-13702-A41	\$446 033032
		18'-21' Bts.-All Loads, Skis	3 14 5/8 x 23					48-13704-A41	\$446 033034
		18'-20' Bts.-All Loads, Skis	3 14 1/2 x 25					48-13706-A41	\$446 033036

t Requires High Performance Trim Tab C46399A1 For Proper Fit.

EDGE II™ (High Performance Propellers)

Model	Year	Boat Speed (MPH)	Nearest Equiv. Part No.	Mat'l.	Blades	Dia. & Pitch	Price	Michigan Part No.
150-175 HP V-6	76 Thru	42-52	48-16546A40	S.S.	3	14 1/4 X 20	\$457	033060
		46-56	48-16548A40	S.S.	3	14 1/4 X 22	\$457	033062
		51-56	48-16550A40	S.S.	3	14 1/4 X 24	\$457	033064
		55-65	48-16552A40	S.S.	3	14 1/4 X 26	\$457	033066
200-225 HP V-6	78 Thru	42-52	48-16546A40	S.S.	3	14 1/4 X 20	\$457	033060
		53-58	48-16548A40	S.S.	3	14 1/4 X 22	\$457	033062
		57-63	48-16550A40	S.S.	3	14 1/4 X 24	\$457	033064
		62-70	48-16552A40	S.S.	3	14 1/4 X 26	\$457	033066

High Performance Hole Shot 4-Blade Propellers

Model	Year	Boat Speed (MPH)	Nearest Equiv. Part No.	Mat'l.	Blades	Dia. & Pitch	Price	Michigan Part No.
135 HP	87 Thru	50-62		S.S.	4	13 3/4 X 22	\$477	033038
150 HP V-6	78 Thru	55-67		S.S.	4	13 3/4 X 24	\$477	033040
175 HP V-6	78-81	60-72		S.S.	4	13 3/4 X 26	\$477	033042
200 HP V-6	78 Thru			S.S.	4	13 3/4 X 26	\$477	033042
220 HP V-6	87-88							
225 HP V-6	81-82							
Merc Laser								
200 HP XRI	87 Thru							
300 hp V-6	83							
3.4 Litre	84-86							

‡ Forward Thrust Washer A-9500-110 comes with propeller and replaces Mercury Forward Thrust Washer.

Motor & Model	Year	Boat Size & Recommendation	Blids. Dia. & Pitch	ALUMINUM			STAINLESS STEEL				
				Nearest Mariner Equiv.	Price	Michigan Part No.	Nearest Mariner Equiv.	Price	Michigan Part No.		
8 HP	76-84	24'-20' Bts. - Sailboats 16'-14' Bts. - All Loads, Skis 16'-14' Bts. - Light Loads	3 8-1/4 x 6-1/2 3 8-1/4 x 8 3 8-1/4 x 9	48-82763 48-82764 48-82766	SMC12 PJ11 SMC18	\$57 \$44 \$48	012100 012008 012101				
8 HP 9.9 HP 15 HP	87 Thru 87 Thru 89 Thru	Houseboat, Workboat 14'-20' Bts. - All Loads Standard Replacement 14'-16' Bts. All Loads	3 9-3/4 x 5-1/2 3 9-1/4 x 7 3 9 x 9 3 9 x 10-1/2	48-42518A11 48-42520A11 48-42522A11 48-17874A12		\$63 \$63 \$63 \$63	032130 032131 032132 032133				
15A, 15 W15 20 HP 25 HP	76-82 76-84 76-79 77-79	Houseboats, Sailboats 14'-12' Bts. - Heavy Loads 14'-12' Bts. - All Loads, Skis 14'-12' Bts. - Light Loads	3 9-1/4 x 7 3 9 x 10 3 9-1/4 x 11 3 9-1/4 x 12	48-82767 48-82768 48-82769 48-82770	SMC39 PJ16 PJ18 PJ15	\$59 \$48 \$48 \$48	012102 012011 012013 012010	"Nibrall"	\$104 \$104	018001 018003	
20-25 HP Thru Hub Exhaust	85 Thru	19'-15' Bts. 17'-13' Bts. Up to 14' Bts.	3 10-3/8 x 11 3 10-3/8 x 13 3 10-1/4 x 14-1/2	48-19638A4 48-19640A4 48-19642A4	PM24C PM23C PM22C	\$87 \$87 \$87	031049 031048 031047	"Nibrall"	\$175	037002	
25 HP 28 HP 30 HP Flow-Thru Exhaust	80-84 76-79 79-90	18'-16' Bts. - All Loads, Skis 17'-14' Bts. - All Loads, Skis 16'-13' Bts. - Light Loads	3 9-7/8 x 9 3 9-7/8 x 10-1/2 3 9-3/8 x 12	48-81647 48-81649	PM39 PM40 PM42	\$79 \$79 \$79	022001 022002 022003				
W40 HP For Non "Thru Prop" Exhaust	77-78	20'-18' Bts. - All Loads 17'-16' Bts. - All Loads, Skis 17'-15' Bts. - Light Loads	3 11-3/4 x 8-3/4 3 11-3/4 x 10 3 11-1/2 x 12	48-83573 48-83552 48-83535	PM62 PM61 PM60	\$97 \$97 \$97	022006 022005 022004				
40 HP 2 Cyl. 40 HP 4 Cyl. 45 HP 4 Cyl. 48 HP 50 HP 4 Cyl. 50 HP 3 Cyl. 60 HP 3 Cyl. 70 HP 3 Cyl. All Thru-Hub Exhaust	78-90 86 Thru All Years Thru 85 86 Thru 84 Thru Thru 83	22'-19' Bts. - All Loads 18'-15' Bts. - All Loads, Skis 18'-15' Bts. - All Loads, Skis 17'-16' Bts. - All Loads, Skis 16'-14' Bts. - Light Loads 15'-13' Bts. - Light Loads 15'-12' Bts. - Light Loads	3 11-1/4 x 10 3 10-5/8 x 12 3 10-5/8 x 12 3 10-3/8 x 13 3 10-1/4 x 14 3 10-1/8 x 15 3 10 x 17	48-73132A4 48-73134A4 48-73136A4 48-73138A4 48-73140A4 48-73144A4	PM600C PM612C PM613C PM614C PM615C PM617C	\$109 \$109 \$109 \$109 \$109 \$109	031015 031016 031017 031018 031019 031020	"Nibrall"	\$188	037010	
60 HP	76	22'-19' Bts. - All Loads 19'-17' Bts. - All Loads, Skis 18'-15' Bts. - All Loads, Skis 17'-16' Bts. - All Loads, Skis 16'-14' Bts. - Light Loads 15'-13' Bts. - Light Loads 14'-12' Bts. - Light Loads	3 12-1/4 x 10 3 12 x 11 3 11-3/4 x 12 3 11-1/2 x 13 3 11-1/4 x 14 3 11 x 15 3 10-3/4 x 16	48-61812A1 48-61814A1 48-61816A1 48-61818A1 48-61820A1 48-61822A1 48-61824A1	PM530 PM527 PM524 PM521 PM518 PM515 PM513	\$105 \$105 \$105 \$105 \$105 \$105 \$105	032045 032044 032043 032042 032041 032040 032039	48-63548A1	SMC439 (br)	\$164	036009
80 HP ** Use Thrust Washer 65091 * Use Thrust Washer 13191A1	77	24'-20' Bts. 22'-19' Bts. - All Loads 22'-19' Bts. - All Loads 22'-19' Bts. - All Loads 19'-17' Bts. - All Loads, Skis 19'-17' Bts. - All Loads, Skis 19'-17' Bts. - All Loads, Skis 17'-16' Bts. - All Loads, Skis 17'-16' Bts. - All Loads, Skis 18'-15' Bts. - All Loads, Skis 18'-15' Bts. - All Loads, Skis 16'-14' Bts. - All Loads, Skis 16'-14' Bts. - All Loads, Skis	3 13 x 13 3 13 x 15 3 13 x 15 3 13-3/4 x 15 3 13 x 17 3 13 x 17 3 13-1/4 x 17 3 13 x 19 3 13 x 19 3 13 x 21 3 13 x 21 3 13 x 23 3 13 x 23	48-58826 48-32390 48-65022 48-65024 48-62780 48-65736 48-65736	**PR153 **PR155 **PR155C **PR157 **PR157C **PR159 **PR159C **PR161 **PR161C **PR163 **PR163C	\$111 \$111 \$119 \$111 \$119 \$111 \$119 \$111 \$119 \$111 \$119 \$119	**032090 **032091 **031001 **032092 **031002 **032093 **031003 **032094 **031004 **032095 **031005	t*SSM615 II C	\$361	t*033016	
75 HP 4 In Line 75 HP 3 Cyl. 80 HP 4 In Line 90 HP 6 In Line 90 HP 3 Cyl. 100 HP 4 In Line 115 HP 6 In Line 115 HP 4 In Line *Use Thrust Washer 13191A1	Thru 86 87 Thru 78-83 Thru 85 87 Thru 88 Thru 78-88 89 Thru	24'-20' Bts. - All Loads, Skis 19'-17' Bts. - All Loads, Skis 18'-16' Bts. - All Loads, Skis 18'-15' Bts. - All Loads, Skis 18'-15' Bts. - All Loads, Skis 18'-15' Bts. - All Loads, Skis 16'-14' Bts. - All Loads, Skis	3 13-3/4 x 15 3 13-1/4 x 17 3 13 x 19 3 12-3/4 x 21 3 13 x 21 3 13 x 21 3 12-1/2 x 23	48-77342A4 48-77344A4 48-77346A4 48-77348A4 48-77350A4	t*PM315C t*PM317C *PM319C *PM321C *PM323C	\$118 \$118 \$118 \$118 \$118	t*031041 t*031042 *031043 *031044 *031045	t*SSM615 II C t*SSM617 II C *SSM619 II C *SSM621 II C	\$361 \$361 \$361 \$361	t*033016 t*033017 *033018 *033019	
135 HP V-6 150 HP V-6 175 HP V-6 200 HP V-6 220 HP Magnum EFI Use Thrust Washer 13171	86 Thru 79 Thru 78 Thru 79 Thru 87-88	30'+(40-45MPH) Sgl. or Twin 30'-28'(45-50 MPH) Sgl. or Tn 28'-24'(50-55 MPH) Sgl. or Tn Cruisers, Houseboats Cruisers, Houseboats Cruisers, Houseboats Cruisers, Houseboats Cruisers, Houseboats 21'-19' Bts. - All Loads, Skis 20'-18' Bts. - All Loads, Skis	3 15-1/4 x 17 3 15 x 19 3 14-1/2 x 21 3 16 x 11 3 16 x 13 3 15-1/4 x 15 3 14-1/2 x 15 3 14-1/2 x 17 3 14 x 19 3 13-3/4 x 21 3 13-1/2 x 23	48-78112A4 48-78114A4 48-78116A4 48-78118A4 48-78120A4 48-78122A4 48-78124A4	PM 211C PM 213C PM 215C PM 217C PM 219C PM 221C PM 223C	\$136 \$136 \$136 \$136 \$136 \$136 \$136	031021 031022 031023 031024 031025 031026 031027	48-16312A5 48-16314A5 48-16316A5 48-16318A5 48-16320A5	SSM 272C SSM 292C SSM 312C SSM 245C SSM 247C SSM 249C SSM 251C SSM 253C	\$458 \$458 \$458 \$407 \$407 \$407 \$407 \$407	033020-1 033021-1 033022-1 033002-1 033003-1 033004-1 033005-1 033006-1
250 HP 275 HP TM	90 91 Thru	21'-24' Bts. - All Loads, Skis 18'-22' Bts. - All Loads, Skis 18'-21' Bts. - All Loads, Skis 18'-20' Bts. - All Loads, Skis	3 15 1/4 x 19 3 14 3/4 x 21 3 14 5/8 x 23 3 14 1/2 x 25					48-13700-A41 48-13702-A41 48-13704-A41 48-13706-A41	\$446 \$446 \$446 \$446	033030 033032 033034 033036	

t Requires High Performance Trim Tab C46399A1 For Proper Fit

See Mariner Performance Propellers on Following Page.

II™ (High Performance Propellers)

Model	Year	Boat Speed (MPH)	Nearest Equiv. Part No.	Mat'l.	Blades	Dia. & Pitch	Price	Michigan Part No.
150 HP V-6	76 Thru	42-52	48-16546A40	S.S.	3	14 1/4 x 20	\$457	033060
175 HP V-6	78 Thru	46-57	48-16548A40	S.S.	3	14 1/4 x 22	\$457	033062
		50-63	48-16550A40	S.S.	3	14 1/4 x 24	\$457	033064
		54-70	48-16552A40	S.S.	3	14 1/4 x 26	\$457	033066
200 HP V-6	78 Thru	53-58	48-16548A40	S.S.	3	14 1/4 x 22	\$457	033062
225 HP V-6	87 Thru	57-63	48-16550A40	S.S.	3	14 1/4 x 24	\$457	033064
		62-70	48-16552A40	S.S.	3	14 1/4 x 26	\$457	033066

High Performance Hole Shot 4-Blade Propellers

Model	Year	Boat Speed (MPH)	Nearest Equiv. Part No.	Mat'l.	Blades	Dia. & Pitch	Price	Michigan Part No.
135 HP	86 Thru	50-62		S.S.	4	13 3/4 x 22	\$477	‡033038
150 HP V-6	79 Thru	55-67		S.S.	4	13 3/4 x 24	\$477	‡033040
175 HP V-6	78 Thru			S.S.	4	13 3/4 x 26	\$477	‡033042
200 HP V-6	79 Thru	60-72		S.S.	4			
220 HP	87-88							

Magnum EFI

‡ Forward Thrust Washer A-9500-110 comes with propeller and replaces Mariner Forward Thrust Washer.

TOHATSU, NISSAN

Motor & Model	Year	Boat Size & Recommendation	Blds.	Dia. & Pitch	ALUMINUM			STAINLESS STEEL			
					Nearest OEM Equiv.	Price	Michigan Part No.	Price	Michigan Part No.		
9.9B - 18C HP	84-86	14' - 18' Bts. - All Loads	3	9.2 x 6.9	362-64105-0	\$68	142015*				
9.9B2 - 18C2	86 Thru	12' - 16' Bts. - All Loads	3	9.2 x 8.4	362-64102-0	\$68	142017*				
		10' - 14' Bts. - All Loads	3	9.2 x 9.8	362-64108-0	\$68	142019*				
25C/30A HP	84-86	16' - 20' Bts. - All Loads	3	10.2 x 8.3	346-64105-5	\$77	142020*				
25C2/30A2 HP	86-88	14' - 18' Bts. - All Loads	3	9.8 x 10.2	346-64102-5	\$77	142022*				
25C2/30A3 HP	88 Thru	12' - 16' Bts. - All Loads	3	9.9 x 13.1	346-64104-5	\$77	142024*				
40C/35B HP	84 Thru	21'-17' Bts.-All Loads	3	10.6 x 11.3	361-64113-0	\$79	142001				
40D/50D HP	90 Thru	17'-16' Bts.-All Loads	3	10.6 x 11.7	361-64114-0	\$79	142002				
		16'-14' Bts.-All Loads	3	10.3 x 12.7	348-64102-0	\$79	142003				
		14'-12' Bts.-All Loads	3	10.2 x 13.9	348-64103-0	\$79	142004				
55B/70A HP	84-86	Cruisers, Houseboats	3	11.6 x 11	353-64103-0	\$88	142005				
50C/60A/70A2	87 Thru	18'-15' Bts.-All Loads, Skis	3	11.5 x 13	353-64105-0	\$88	142006				
		18'-15' Bts.-All Loads, Skis	3	12 1/2 x 13				\$274		013024	
		17'-14' Bts.-All Loads, Skis	3	11 x 15	353-64107-0	\$88	142007				
		17'-14' Bts.-All Loads, Skis	3	12 1/4 x 15					SSO 315C	\$274	013010
		15'-13' Bts.-All Loads, Skis	3	10.7 x 16.4	353-64108-0	\$88	142008				
		15'-13' Bts.-All Loads, Skis	3	11 3/4 x 17				\$274		013026	
		14'-12' Bts.-All Loads, Skis	3	10.9 x 17.6	353-64109-0	\$88	142009				
		14'-12' Bts.-All Loads, Skis	3	11 1/4 x 19				\$274		013032	
90 HP	87 Thru	24'-20' Bts.-All Loads, Skis	3	13.5 x 14.6	3B7-64532-0	\$109	142010				
120**, 140**	90 Thru	24'-20' Bts.-All Loads, Skis	3	13 3/4 x 15					SSY615 IIC	\$374	103025
		19'-17' Bts.-All Loads, Skis	3	13.5 x 15.7	3B7-64536-0	\$109	142011				
** (Tohatsu only)		19'-17' Bts.-All Loads, Skis	3	13 1/4 x 17					SSY617 IIC	\$374	103026
		18'-16' Bts.-All Loads, Skis	3	12.9 x 17.6	3B7-64541-0	\$109	142012				
		18'-16' Bts.-All Loads, Skis	3	13 x 19					SSY619 IIC	\$374	103027
		18'-15' Bts.-All Loads, Skis	3	12.6 x 19.9	3B7-64545-0	\$109	142013				
		18'-15' Bts.-All Loads, Skis	3	12 3/4 x 21					SSY621 IIC	\$374	103028

*Available March 1, 1992

McCULLOCH, SCOTT, AERO

Motor & Model	Year	Boat Size & Recommendation	Blds.	Dia & Pitch	ALUMINUM		
					Price	Michigan Part No.	
3 1/2 - 4 HP	46-73	Standard Replacement	2	7 3/8 x 6	SA10	\$46	152030
7 1/2 HP Weedless	60-73	14'-12' Bts.-Light Loads	3	6 x 6	SAC371	\$63	152034
		Light Runabouts-Light Loads	2	6 x 8	AJC63	\$53	152001
12 - 14.1 HP	60-67	Standard Replacement	3	8 1/4 x 8 1/2	AMC535(LH)	\$53	152003
22-25-27.7-28 HP	58-67	16'-14' Bts.-Light Loads	3	9 x 10	PS25	\$71	152020
40-43.7-45 HP	59-69	17'-16' Bts.-All Loads, Skis	3	10 x 11	SMC637	\$81	152036
Right-Hand Prop		16'-14' Bts.-All Loads, Skis	3	10 x 12	PS40	\$76	152021
60-75.2 HP	58-69	24'-20' Bts.-One Engine	3	11 1/2 x 10	PS74	\$90	152026
		19'-17' Bts.-All Loads, Skis	3	11 1/2 x 11	PS73	\$90	152025
		17'-16' Bts.-All Loads, Skis	3	11 1/2 x 12	PS71	\$90	152023

Motor & Model	Year	Boat Size & Recommendation	Blids.	Dia. & Pitch	ALUMINUM			STAINLESS STEEL		
					Nearest Suzuki Equiv.	Price	Michigan Part No.	Price	Michigan Part No.	
DT5	83	Standard Replacement	2	8-1/4 x 5-1/2	PS 1	\$47	062001			
DT6	84Thru	Sailboats	3	8 x 4	PS 2	\$60	062002			
DT8	83-87									
DT 9.9	76-78	Light Runabouts - Light Loads	3	8 3/4 x 10	PS 7	\$60	062005			
DT 16	76-78	16'-14' Bts. - All Loads	3	8 3/4 x 9	PS 6	\$60	062004			
DT 20	76-78									
DT 25	76-78	17'-16' Bts. - All Loads	3	9 x 8	PS 5	\$60	062003			
DT9.9	84-87	14'-20' Bts. - All Loads	3	9- 1/4 x 7	58100-93703-019	\$66	062015			
DT15	83-88	14'-18' Bts. - All Loads	3	9- 1/4 x 9	58100-93723-019	\$66	062016			
DT15C	89 Thru	14'-16' Bts. - All Loads	3	9- 1/4 x 11	58100-93743-019	\$66	062017			
DT20, 25	83-86	18'-16' Bts. - All Loads	3	10-1/4 x 11	58100-96420-019	\$69	062012	"Nibral"	\$149	068012
DT 20, 25	87-88	16'-14' Bts. - All Loads	3	10-1/4 x 12	58100-96430-019	\$69	062013	"Nibral"	\$149	068013
DT 25C	89 Thru							"Nibral"	\$149	068014
DT 30	83-86	16'-14' Bts. - Light Loads	3	10-1/4 x 13	58100-96440-019	\$69	062014			
DT 30/30C	87-88									
DT 30C	89 Thru									
DT 40	83Thru	21'-18' Bts. - All Loads	3	10 1/4 x 10	PM 530	\$105	032045			
DT 50 & 50M	83-84	19'-17' Bts. - Light Loads	3	12 x 11	PM 527	\$105	032044	SMC 439 (bronze)	\$164	036009
DT 55	85Thru	18'-16' Bts. - Light Loads	3	11-3/4 x 12	58100-95392-019	PM 524 \$105	032043			
DT 60	83-84	17'-15' Bts. - Light Loads	3	11-1/2 x 13	58100-94312-019	PM 521 \$105	032042	SMC 437 (bronze)	\$164	036007
DT 65	85 Thru	16'-14' Bts. - Light Loads	3	11-1/4 x 14	58100-95352-019	PM 518 \$105	032041	SMC 436 (bronze)	\$164	036006
		15'-13' Bts. - Light Loads	3	11 x 15	58100-95362-019	PM 515 \$105	032040	SMC 435 (bronze)	\$164	036005
		14'-12' Bts. - Light Loads	3	10-3/4 x 16		PM 513 \$105	032039	SMC 434 (bronze)	\$164	036004
DT 75 †	83 Thru	19'-17' Bts. - All Loads, Skis	3	13-3/4 x 15	58100-95500-019	\$113	*061001		\$349	063001
DT 85 †	79 Thru	18'-15' Bts. - All Loads, Skis	3	13-1/4 x 17	58100-95511-019	\$113	*061002		\$349	063002
DT 90 †	89 Thru	16'-14' Bts. - All Loads, Skis	3	13 x 19	58100-95521-019	\$113	*061003		\$349	063003
DT 100 †	89 Thru									
DT 115 †	81 Thru	16'-14' Bts. - Light Loads	3	13 x 21	58100-95530-019	\$113	*061004		\$349	063004
DT 140 †	81 Thru	14'-12' Bts. - Light Loads	3	12-1/2 x 23		\$113	*061005			
DT 150 V-6	86 Thru	19'-17' Bts. - All Loads, Skis	3	14-1/2 x 15					\$399	\$063005
DT 175 V-6	86 Thru	18'-15' Bts. - All Loads, Skis	3	14-1/2 x 17					\$399	\$063006
DT 200 V-6	86 Thru	16'-14' Bts. - All Loads, Skis	3	14 x 19					\$399	\$063007
DT 225 V-6	90 Thru	16'-14' Bts. - Light Loads	3	13-3/4 x 21					\$399	\$063008
		14'-12' Bts. - Light Loads	3	13-1/2 x 23					\$399	\$063010

EDGE II™ (High Performance Propellers)

Model	Year	Boat Speed (MPH)	Nearest Equiv. Part No.	Mat'l.	Blades	Dia. & Pitch	Price	Michigan Part No.
DT 150 V-6	86 Thru	42-52	99105-00200-20P	S.S.	3	14 1/4 x 20	\$423	\$ 063022
DT 175 V-6	86 Thru	46-57	99105-00200-22P	S.S.	3	14 1/4 x 22	\$423	\$ 063024
		50-63	99105-00200-24P	S.S.	3	14 1/4 x 24	\$423	\$ 063026
		54-70	99105-00200-26P	S.S.	3	14 1/4 x 26	\$423	\$ 063028
DT 200 V-6	86 Thru	53-58	99105-00200-22P	S.S.	3	14 1/4 x 22	\$423	\$ 063024
DT 225 V-6	90 Thru	57-63	99105-00200-24P	S.S.	3	14 1/4 x 24	\$423	\$ 063026
		62-70	99105-00200-26P	S.S.	3	14 1/4 x 26	\$423	\$ 063028

High Performance Hole Shot 4-Blade Propellers

Model	Year	Boat Speed (MPH)	Nearest Equiv. Part No.	Mat'l.	Blades	Dia. & Pitch	Price	Michigan Part No.
DT 150 V-6	86 Thru	50-62		S.S.	4	13 3/4 x 22	\$477	\$ 063016
DT 175 V-6	86 Thru	55-67		S.S.	4	13 3/4 x 24	\$477	\$ 063018
DT 200 V-6	86 Thru	60-72		S.S.	4	13 3/4 x 26	\$477	\$ 063020
DT 225 V-6	90 Thru							

† Requires; † 57633-95501 Spacer, † 57635-95503 Stopper, † 57635-95300 Lock Washer Supplied With Engine.

*If currently using uncupped prop,use cupped prop having 2" less pitch. Boats with power trim use same pitch.

• Use stopper 57632-96400.

§ Use spacer A9500-109 supplied with propeller on aft end of prop.

‡ Stopper 57632-87E10., 5733-95501 Spacer, 57635-95300 Washer

VOLVO-PENTA, ARCHIMEDES

Motor & Model	Year	Boat Size & Recommendation	Blids.	Dia. & Pitch	ALUMINUM			STAINLESS STEEL		
					Price	Michigan Part No.	Price	Michigan Part No.		
450-550-600-700	All	Cruisers, Houseboats	4	14 x 10	DQ320	\$148	012074			
	Years	Cruisers, Houseboats	3	14 x 11	PJ87	\$100	012047			
		19'-17' Bts. - All Loads, Skis	4	14 x 12	DQ328	\$148	012075			
		17'-16' Bts. - All Loads, Skis	3	13-3/4 x 15	PJ80	\$100	012049			
		17'-16' Bts. - All Loads, Skis	3	13-3/4 x 15	*PJ89C	\$105	011002	\$335		013028
		16'-14' Bts. - All Loads, Skis	3	13-1/4 x 17	PJ81	\$100	012050			
		16'-14' Bts. - All Loads, Skis	3	13-1/4 x 17	*PJ90C	\$105	011003	\$335		013030
		14'-12' Bts. - Heavy Loads	3	13 x 19	PJ82	\$100	012051			
		14'-12' Bts. - Heavy Loads	3	13 x 19	*PJ91C	\$105	011004	\$335		013033
		Light Runabouts - Light Loads	3	13 x 21	*PJ83C	\$105	011005	\$335		013034
60-90-140-200-250-252	All	Sailboats	3	9-1/4 x 7	SMC39	\$59	012102			
	Years	17'-16' Bts. - All Loads, Skis	4	9 x 9	AMC448	\$86	012072			
		Weedless	3	9 x 10	EW19	\$57	012076			
		Standard Replacement	3	9 x 10	PJ16	\$48	012011	"Nibral"	\$104	018001
		17'-16' Bts. - All Loads, Skis	3	8-3/4 x 11	PR20	\$57	012079			
		16'-14' Bts. - All Loads, Skis	3	8-3/4 x 12	PR22	\$57	012080			
		16'-14' Bts. - Light Loads	3	8-3/4 x 13	PR24	\$57	012081			
		14'-12' Bts. - Light Loads	3	8-3/4 x 14	PR26	\$57	012082			
		Light Runabouts - Light Loads	2	9-1/4 x 12	AJC418	\$68	012064	AJC417(bronze)	\$95	016013

*If currently using uncupped prop,use cupped prop having 2" less pitch. Boats with power trim use same pitch.

Motor & Model	Year	Boat Size & Recommendation	Blds.	Dia. & Pitch	ALUMINUM			BRONZE		
					Price	Michigan Part No.		Price	Michigan Part No.	
BF 7.5	78-87	Sailboats	3	9 1/4 x 7	SMC39	\$59	012102			
BF 100		16'-14' Bts.	3	9 x 8	PJ21	\$48	012014			
BF 8	87 Thru	16'-14' Bts. - Weedless	3	9 x 8	PJ9	\$49	012006			
		16'-14' Bts. - Light Loads	3	9 x 9	PJ19	\$48	012109			
		14'-12' Bts.	3	9 x 10	PJ16	\$48	012011	"Nibral"	\$104	018001
		14'-12' Bts - Weedless	3	9 x 10	EWC19	\$57	012076			
		Very Lt. Runabouts-Lt. Loads	2	9 1/4 x 12	AJC418	\$68	012064	AJC417 (bronze)	\$95	016013
BF 9.9	88 Thru	13'-17' Bts. - All Loads	3	9-1/4 x 8		\$58	112001			
BF 15		12'-15' Bts. - All Loads	3	9-1/4 x 9		\$58	112002			
		12'-15' Bts. - Light Loads	3	9-1/4 x 10-1/2		\$58	112003			
BF 35	91 Thru	21'-19' Bts. - All Loads, Skis	3	12 1/4 x 10	58130-ZV5-860	PM530	\$105	032045		
BF 45	91 Thru	19'-17' Bts. - All Loads, Skis	3	12 x 11		PM527	\$105	032044	SMC439 (bronze)	\$164 036009
		17'-16' Bts. - All Loads, Skis	3	11 3/4 x 12	58130-ZV5-850	PM524	\$105	032043		
		17'-15' Bts. - All Loads, Skis	3	11 1/2 x 13	58130-ZV5-000	PM521	\$105	032042	SMC437 (bronze)	\$164 036007
		16'-14' Bts. - All Loads, Skis	3	11 1/4 x 14		PM518	\$105	032041	SMC436 (bronze)	\$164 036006
		15'-13' Bts. - All Loads, Skis	3	11 x 15		PM515	\$105	032040	SMC435 (bronze)	\$164 036005
		14'-12' Bts. - All Loads, Skis	3	10 3/4 x 16	58130-ZV5-870	PM513	\$105	032039	SMC434 (bronze)	\$164 036004
		17'-14' Bts. - All Loads, Skis	3	10 5/8 x 12					Stainless Steel	\$304 113001
		16'-14' Bts. - All Loads, Skis	3	10 1/4 x 14					Stainless Steel	\$304 113002

SEARS, ELGIN, ESKA

Motor & Model	Year	Boat Size & Recommendation	Blds.	Dia. & Pitch	ALUMINUM			Michigan Part No.
					Price			
4 HP	60-69	Standard Replacement	2	7 3/8 x 6	SA10	\$46	152030	
3, 3.5, 3.6, 4, 4.5	70-73	Standard Replacement	2	7 1/2 x 4 1/2	G20(LH)	\$42	072017	
5 HP (Sears)	88 Thru	Standard Replacement	3	7 1/4 x 5 1/2	PC112	\$53	072123	
		16'-14' Bts.-Light Loads	2	7 x 6 1/4	PC90	\$48	072126	
		Aux.-Work Boats	2	8 x 5	PC5	\$48	072120	
5-51/2-7-71/2 HP	60-73	Standard Replacement	2	7 1/2 x 5 1/2	G30(LH)	\$44	152014	
		Standard Replacement	3	6 3/4 x 6 1/2	G45(LH)	\$52	152016	
7 1/2 HP (Weedless)	60-69	14'-12' Bts.-Light Loads	3	6 x 6	SAC371	\$63	152034	
		Light Runabouts-Light Loads	2	6 x 8	AJC63	\$53	152001	
7 1/2 HP (Sears)	88 Thru	14'-12' Bts.-Light Loads	3	8 x 9	PC28	\$55	072122	
9.9-15 HP (Sears)	87 Thru	Standard Replacement	2	8 x 8 3/4	PC12	\$49	072024	
		Standard Replacement	3	8 1/8 x 8 1/4	PC20	\$49	072026	
		16'-14' Bts.-Light Loads	3	8 1/4 x 6	PC24	\$55	072121	
		Aux.-Work Boats	3	8 1/4 x 4 1/2	PC26	\$55	072125	
12-14 HP	60-70	Standard Replacement	3	8 1/4 x 8 1/2	AMC535(LH)	\$53	152003	
25-28 HP	60-70	Standard Replacement	3	9 x 10	PS25	\$71	152020	
35 HP	65	16'-14' Bts.-All Loads, Skis	3	10 1/2 x 12	SMC715	\$83	152038	
40-45 HP	59-70	17'-16' Bts.-All Loads, Skis	3	10 x 11	SMC637	\$81	152036	
		16'-14' Bts.-All Loads, Skis	3	10 x 12 1/2	PS40	\$76	152021	
60-75 HP	59-70	24'-20' Bts.-One Engine	3	11 1/2 x 10	PS74	\$90	152026	
		19'-17' Bts.-All Loads, Skis	3	11 1/2 x 11	PS73	\$90	152025	
		17'-16' Bts.-All Loads, Skis	3	11 1/2 x 12	PS71	\$90	152023	

WARD'S SEA KING

Motor & Model	Year	Boat Size & Recommendation	Blds.	Dia.&Pitch	ALUMINUM			Michigan Part No.
					Price			
2, 3-1/2, 4.5-5 HP	70-78	Standard Replacement	2	7 x 4-1/2	C15(LH)	\$48	152011	
3-1/2 HP	64-69	Standard Replacement	2	7-1/2 x 4-1/2	G20(LH)	\$42	072017	
5-6 HP	64-70	Standard Replacement	2	7-1/2 x 7	GC54	\$56	072018	
6 HP	71-80	Standard Replacement	2	8 x 5	PC9	\$48	072022	
7-1/2 HP Full Shift	77-78	Standard Replacement	3	8-1/4 x 8	PJ11	\$44	012008	
8-9-9.2 HP	64-69	Standard Replacement	2	8 x 8	GC55	\$56	072019	
9.6-9.9-10 HP	70 Thru	Standard Replacement	2	8-1/4 x 8-1/4	PC12	\$49	072024	
		16'-14' Bts. - All Loads, Skis	2	8-1/4 x 8	PC10	\$49	072023	
15 HP	74-82	Standard Replacement	3	8-1/8 x 8-1/4	PC20	\$49	072026	
20-25 HP	68-78	Standard Replacement	3	8-1/2 x 8-1/2	AMC490	\$71	152002	
Splined Shaft		14'-12' Bts. - Light Loads	3	8-1/2 x 10	PR8	\$73	072028	
45-50 HP	64-65	17'-16' Bts. - All Loads, Skis	3	10-1/2 x 12	SMC715	\$83	152038	
		16'-14' Bts. - All Loads, Skis	3	10-1/2 x 13	SMC713	\$83	152037	
35-45-50-55 HP	66 Thru	Cruisers, Houseboats, Sailboats	3	10-3/8 x 10	AMC308	\$74	072014	
Splined Shaft		19'-17' Bts. - All Loads, Skis	3	10-3/8 x 11 1/2		\$76	072131	\$175 078131
		17'-16' Bts. - All Loads, Skis	3	10-3/8 x 12 1/2		\$76	072132	
		16'-14' Bts. - Light Loads	3	10-3/8 x 13 1/2		\$76	072133	\$175 078133
		16'-14' Bts. - Light Loads	3	10-3/8 x 14 1/2		\$76	072134	
		Light Runabouts - Light Loads	3	10-1/2 x 15		\$76	072124	
80 HP	64-69	17'-16' Bts. - All Loads, Skis	3	12-1/8 x 14	PJ50	\$83	012033	

Motor & Model	Year	Boat Size & Recommendation	Blds.	Dia. & Pitch	ALUMINUM			BRONZE		
					Price	Michigan Part No.		Price	Michigan Part No.	
BF 7.5	78-87	Sailboats	3	9 1/4 x 7	SMC39	\$59	012102			
BF 100		16'-14' Bts.	3	9 x 8	PJ21	\$48	012014			
BF 8	87 Thru	16'-14' Bts. - Weedless	3	9 x 8	PJ9	\$49	012006			
		16'-14' Bts. - Light Loads	3	9 x 9	PJ19	\$48	012109			
		14'-12' Bts.	3	9 x 10	PJ16	\$48	012011	"Nibral"	\$104	018001
		14'-12' Bts - Weedless	3	9 x 10	EWC19	\$57	012076			
		Very Lt. Runabouts-Lt. Loads	2	9 1/4 x 12	AJC418	\$68	012064	AJC417 (bronze)	\$95	016013
BF 9.9	88 Thru	13'-17' Bts. - All Loads	3	9-1/4 x 8		\$58	112001			
BF 15		12'-15' Bts. - All Loads	3	9-1/4 x 9		\$58	112002			
		12'-15' Bts. - Light Loads	3	9-1/4 x 10-1/2		\$58	112003			
BF 35	91 Thru	21'-19' Bts. - All Loads, Skis	3	12 1/4 x 10	58130-ZV5-860	PM530	\$105	032045		
BF 45	91 Thru	19'-17' Bts. - All Loads, Skis	3	12 x 11		PM527	\$105	032044	SMC439 (bronze)	\$164 036009
		17'-16' Bts. - All Loads, Skis	3	11 3/4 x 12	58130-ZV5-850	PM524	\$105	032043		
		17'-15' Bts. - All Loads, Skis	3	11 1/2 x 13	58130-ZV5-000	PM521	\$105	032042	SMC437 (bronze)	\$164 036007
		16'-14' Bts. - All Loads, Skis	3	11 1/4 x 14		PM518	\$105	032041	SMC436 (bronze)	\$164 036006
		15'-13' Bts. - All Loads, Skis	3	11 x 15	58130-ZV5-870	PM515	\$105	032040	SMC435 (bronze)	\$164 036005
		14'-12' Bts. - All Loads, Skis	3	10 3/4 x 16		PM513	\$105	032039	SMC434 (bronze)	\$164 036004
		17'-14' Bts. - All Loads, Skis	3	10 5/8 x 12					Stainless Steel	\$304 113001
		16'-14' Bts. - All Loads, Skis	3	10 1/4 x 14					Stainless Steel	\$304 113002

SEARS, ELGIN, ESKA

Motor & Model	Year	Boat Size & Recommendation	Blds.	Dia. & Pitch	ALUMINUM					
					Price	Michigan Part No.				
4 HP	60-69	Standard Replacement	2	7 3/8 x 6	SA10	\$46	152030			
3, 3.5, 3.6, 4, 4.5	70-73	Standard Replacement	2	7 1/2 x 4 1/2	G20(LH)	\$42	072017			
5 HP (Sears)	88 Thru	Standard Replacement	3	7 1/4 x 5 1/2	PC112	\$53	072123			
		16'-14' Bts.-Light Loads	2	7 x 6 1/4	PC90	\$48	072126			
		Aux.-Work Boats	2	8 x 5	PC5	\$48	072120			
5-5 1/2-7-7 1/2 HP	60-73	Standard Replacement	2	7 1/2 x 5 1/2	G30(LH)	\$44	152014			
		Standard Replacement	3	6 3/4 x 6 1/2	G45(LH)	\$52	152016			
7 1/2 HP (Weedless)	60-69	14'-12' Bts.-Light Loads	3	6 x 6	SAC371	\$63	152034			
		Light Runabouts-Light Loads	2	6 x 8	AJC63	\$53	152001			
7 1/2 HP (Sears)	88 Thru	14'-12' Bts.-Light Loads	3	8 x 9	PC28	\$55	072122			
9.9-15 HP (Sears)	87 Thru	Standard Replacement	2	8 x 8 3/4	PC12	\$49	072024			
		Standard Replacement	3	8 1/8 x 8 1/4	PC20	\$49	072026			
		16'-14' Bts.-Light Loads	3	8 1/4 x 6	PC24	\$55	072121			
		Aux.-Work Boats	3	8 1/4 x 4 1/2	PC26	\$55	072125			
12-14 HP	60-70	Standard Replacement	3	8 1/4 x 8 1/2	AMC535(LH)	\$53	152003			
25-28 HP	60-70	Standard Replacement	3	9 x 10	PS25	\$71	152020			
35 HP	65	16'-14' Bts.-All Loads, Skis	3	10 1/2 x 12	SMC715	\$83	152038			
40-45 HP	59-70	17'-16' Bts.-All Loads, Skis	3	10 x 11	SMC637	\$81	152036			
		16'-14' Bts.-All Loads, Skis	3	10 x 12 1/2	PS40	\$76	152021			
60-75 HP	59-70	24'-20' Bts.-One Engine	3	11 1/2 x 10	PS74	\$90	152026			
		19'-17' Bts.-All Loads, Skis	3	11 1/2 x 11	PS73	\$90	152025			
		17'-16' Bts.-All Loads, Skis	3	11 1/2 x 12	PS71	\$90	152023			

WARD'S SEA KING

Motor & Model	Year	Boat Size & Recommendation	Blds.	Dia.&Pitch	ALUMINUM					
					Price	Michigan Part No.		Price	Michigan Part No.	
2, 3-1/2, 4.5-5 HP	70-78	Standard Replacement	2	7 x 4-1/2	C15(LH)	\$48	152011			
3-1/2 HP	64-69	Standard Replacement	2	7-1/2 x 4-1/2	G20(LH)	\$42	072017			
5-6 HP	64-70	Standard Replacement	2	7-1/2 x 7	GC54	\$56	072018			
6 HP	71-80	Standard Replacement	2	8 x 5	PC9	\$48	072022			
7-1/2 HP Full Shift	77-78	Standard Replacement	3	8-1/4 x 8	PJ11	\$44	012008			
8-9-9.2 HP	64-69	Standard Replacement	2	8 x 8	GC55	\$56	072019			
9.6-9.9-10 HP	70 Thru	Standard Replacement	2	8-1/4 x 8-1/4	PC12	\$49	072024			
		16'-14' Bts. - All Loads, Skis	2	8-1/4 x 8	PC10	\$49	072023			
15 HP	74-82	Standard Replacement	3	8-1/8 x 8-1/4	PC20	\$49	072026			
20-25 HP	68-78	Standard Replacement	3	8-1/2 x 8-1/2	AMC490	\$71	152002			
Splined Shaft		14'-12' Bts. - Light Loads	3	8-1/2 x 10	PR8	\$73	072028			
45-50 HP	64-65	17'-16' Bts. - All Loads, Skis	3	10-1/2 x 12	SMC715	\$83	152038			
		16'-14' Bts. - All Loads, Skis	3	10-1/2 x 13	SMC713	\$83	152037			
35-45-50-55 HP	66 Thru	Cruisers, Houseboats, Sailboats	3	10-3/8 x 10	AMC308	\$74	072014			
Splined Shaft		19'-17' Bts. - All Loads, Skis	3	10-3/8 x 11 1/2		\$76	072131	\$175	078131	
		17'-16' Bts. - All Loads, Skis	3	10-3/8 x 12 1/2		\$76	072132			
		16'-14' Bts. - Light Loads	3	10-3/8 x 13 1/2		\$76	072133	\$175	078133	
		16'-14' Bts. - Light Loads	3	10-3/8 x 14 1/2		\$76	072134			
		Light Runabouts - Light Loads	3	10-1/2 x 15		\$76	072124			
80 HP	64-69	17'-16' Bts. - All Loads, Skis	3	12-1/8 x 14	PJ50	\$83	012033			

Motor & Model	Year	Boat Size & Recommendation	Blds.	Dia. & Pitch	ALUMINUM			STAINLESS STEEL			
					Nearest Yamaha Equiv.	Price	Michigan Part No.	Nearest Yamaha Equiv.	Price	Michigan Part No.	
6 HP	86 Thru	General Usage	3	8-1/2 x 6-1/2	6G1-45947-00-EL	\$58	102001				
8 HP	84 Thru	General Usage	3	8-1/2 x 7-1/2	6G1-45943-00-EL	\$58	102002				
8 HP	76-83	24'-20' Bts. - Sailboats	3	8-1/4 x 6-1/2		SMC12	\$57	012100			
		16'-14' Bts. - All Loads, Skis	3	8-1/4 x 8		PJ11	\$44	012008			
		16'-14' Bts. - Light Loads	3	8-1/4 x 9		SMC18	\$48	012101			
9.9 HP	84 Thru	13'-17' Bts. - Heavy Loads	3	9-1/4 x 8	683-45947-00-EL	\$58	102003				
15 HP	84 Thru	12'-15' Bts. - All Loads	3	9-1/4 x 9	683-45945-00-EL	\$58	102004				
		12'-15' Bts. - All Loads	3	9-1/4 x 10 1/2	683-45943-00-EL	\$58	102005				
15A & W15 HP	76-83	Houseboats, Sailboats	3	9-1/4 x 7	650-45943-01-36	SMC39	\$59	012102			
	76-78	14'-12' Bts. - Heavy Loads	3	9 x 10	651-45947-00-36	PJ16	\$48	012011	"Nibrat"	\$104 018001	
	77-79	14'-12' Bts. - Light Loads	3	9-1/4 x 11	653-45941-01-36	PJ18	\$48	012013			
20 HP	76-78	14'-12' Bts. - Light Loads	3	9-1/4 x 12		PJ15	\$48	012010	"Nibrat"	\$104 018003	
25-CV25 HP	80 Thru	18'-16' Bts. - All Loads, Skis	3	9-7/8 x 9	664-45941-01-EL	PM39	\$79	022001			
28 HP	76-78	17'-14' Bts. - All Loads, Skis	3	9-7/8 x 10-1/2	664-45945-00-EL	PM40	\$79	022002			
30-CV30 HP	79 Thru	16'-13' Bts. - Light Loads	3	9-3/8 x 12		PM42	\$79	022003			
W40 HP For Non "Thru-Prop" Exhaust	77-83	20'-18' Bts. - All Loads	3	11-3/4 x 8-3/4		PM62	\$97	022006			
		17'-16' Bts. - All Loads, Skis	3	11-3/4 x 10		PM61	\$97	022005			
		17'-15' Bts. - Light Loads	3	11-1/2 x 12		PM60	\$97	022004			
40-50 HP	84 Thru	22'-19' Bts. - Light Loads	3	12-1/4 x 10		PM530	\$105	032045			
55-60 HP	76-81	19'-17' Bts. - All Loads, Skis	3	12 x 11	663-45947-02-EL	PM527	\$105	032044	(bronze) SMC 439	\$164 036009	
CV 40 - CV 50		18'-15' Bts. - All Loads, Skis	3	11-3/4 x 12	6H5-45952-00-EL	PM524	\$105	032043			
PRO 50		17'-16' Bts. - All Loads, Skis	3	11-1/2 x 13	6H5-45945-00-EL	PM521	\$105	032042	(bronze) SMC 437	\$164 036007	
PRO 60		16'-14' Bts. - Light Loads	3	11-1/4 x 14	663-45958-01-EL	PM518	\$105	032041	(bronze) SMC 436	\$164 036006	
		15'-13' Bts. - Light Loads	3	11 x 15	6H5-45943-00-EL	PM515	\$105	032040	(bronze) SMC 435	\$164 036005	
		14'-12' Bts. - Light Loads	3	10-3/4 x 16	663-45949-01-EL	PM513	\$105	032039	(bronze) SMC 434	\$164 036004	
80 HP	1977	24'-20' Bts.	3	13 x 13		PR153	\$111	032090			
		22'-19' Bts. - All Loads	3	13 x 15		PR155	\$111	032091			
		22'-19' Bts. - All Loads, Skis	3	13 x 15		PR155C	\$119	031001			
		22'-19' Bts. - All Loads, Skis	3	13-3/4 x 15					SSM6151IC	\$361 033016	
		19'-17' Bts. - All Loads, Skis	3	13 x 17		PR157	\$111	032092			
		19'-17' Bts. - All Loads, Skis	3	13 x 17		PR157C	\$119	031002			
		19'-17' Bts. - All Loads, Skis	3	13-1/4 x 17					SSM6171IC	\$361 033017	
		18'-15' Bts. - All Loads, Skis	3	13 x 19		PR159	\$111	032093			
		18'-15' Bts. - All Loads, Skis	3	13 x 19		PR159C	\$119	031003			
		17'-16' Bts. - All Loads, Skis	3	13 x 21		PR161	\$111	032094			
		17'-16' Bts. - All Loads, Skis	3	13 x 21		PR161C	\$119	031004			
		16'-14' Bts. - All Loads, Skis	3	13 x 23		PR163	\$111	032095			
80-90-115 140 HP	78-83 78-79	24'-20' Bts. - All Loads, Skis	3	13-3/4 x 15		PM315C	\$118	031041	SSM6151IC	\$361 033016	
		19'-17' Bts. - All Loads, Skis	3	13-1/4 x 17		PM317C	\$118	031042	SSM6171IC	\$361 033017	
		18'-16' Bts. - All Loads, Skis	3	13 x 19		PM319C	\$118	031043	SSM6191IC	\$361 033018	
		18'-15' Bts. - All Loads, Skis	3	12-3/4 x 21		PM321C	\$118	031044	SSM6211IC	\$361 033019	
		16'-14' Bts. - All Loads, Skis	3	12-1/2 x 23		PM323C	\$118	031045			
70-90-115-130 HP CV 85		24'-20' Bts. - All Loads, Skis	3	13-3/4 x 15	6E5-45947-00-EL	PY315C	\$113	101001	SSY6151IC	\$374 103025	
		19'-17' Bts. - All Loads, Skis	3	13-1/4 x 17	6E5-45945-00-EL	PY317C	\$113	101003	688-45930-01-98 SSY6171IC	\$374 103026	
		18'-16' Bts. - All Loads, Skis	3	13 x 19	6E5-45941-00-EL	PY319C	\$113	101005	688-45970-03-98 SSY6191IC	\$374 103027	
		18'-15' Bts. - All Loads, Skis	3	12-3/4 x 21	6E5-45943-00-EL	PY321C	\$113	101007	688-45972-02-98 SSY6211IC	\$374 103028	
		16'-14' Bts. - All Loads, Skis	3	12-1/2 x 23	6E5-45952-00-EL	PY323C	\$113	101009			
150-200 HP 175 HP V-6	79-83 78-79 84 Thru	Cruisers, Houseboats	3	16 x 11		PM211C	\$136	031021			
		Cruisers, Houseboats	3	16 x 13		PM213C	\$136	031022			
		Cruisers, Houseboats	3	15-1/4 x 15		PM215C	\$136	031023			
		Cruisers, Houseboats	3	14-1/2 x 15					SSM 245C	\$407 033002-1	
		Cruisers, Houseboats	3	14-1/2 x 17		PM217C	\$136	031024	SSM 247C	\$407 033003-1	
		Cruisers, Houseboats	3	14 x 19		PM219C	\$136	031025	SSM 249C	\$407 033004-1	
21'-19' Bts. - All Loads, Skis	3	13-3/4 x 21	3	13-1/2 x 23		PM221C	\$136	031026	SSM 251C	\$407 033005-1	
20'-18' Bts. - All Loads, Skis	3	13-1/2 x 23		PM223C	\$136	031027	SSM 253C	\$407 033006-1			
V-6 150 HP	84 Thru	Cruisers, Houseboats	3	15-1/4 x 15	6G5-45941-00-98	PY415C	\$130	101010	6G5-45978-01-98	SSY717C	\$411 103018
175 HP	84 Thru	Cruisers, Houseboats	3	14-1/2 x 17	6G5-45947-01-98	PY417C	\$130	101011	6G5-45974-01-98	SSY719C	\$411 103020
200 HP	84 Thru	Cruisers, Houseboats	3	14 x 19	6G5-45945-01-98	PY419C	\$130	101012	6G5-45972-01-98	SSY721C	\$411 103022
V-6 Special	84-85	Cruisers, Houseboats	3	13-3/4 x 21	6G5-45943-00-EL	PY421C	\$130	101013	6G5-45976-01-98	SSY723C	\$411 103024
PRO V, EXCEL	86 Thru	20'-18' Bts. - All Loads, Skis	3	13-1/2 x 23							
225	89 Thru										
250	90 Thru										

("Heavy-Duty Special" Hard to Plane Boats)

Model	Year	Boat Size (MPH)	Mat'l.	Blds.	Dia. & Pitch	Price	Michigan Part No.
V-6 150 HP	84 Thru	32'+ Twin (35-45)	S.S.	3	15 1/4 x 17 (LH)	\$447	103001
175 HP	84 Thru		S.S.	3	15 1/4 x 17 (RH)	\$447	103002
200 HP	84 Thru		S.S.	3	15 x 19 (LH)	\$447	103003
V-6 Special	84-85	28'-24' Twin (40-48)	S.S.	3	15 x 19 (RH)	\$447	103004
PRO V, EXCEL	86 Thru		S.S.	3	14 1/2 x 21 (LH)	\$447	103005
225	89 Thru	24'-22' Twin (45-53)	S.S.	3	14 1/2 x 21 (RH)	\$447	103006
250	90 Thru		S.S.	3		\$447	

(Counter-Rotating)

Continued on next page

EXCEL II™ (High Performance Propellers)

Model	Year	Boat Speed (MPH)	Nearest Equiv. Part No.	Mat'l.	Blades	Dia. & Pitch	Price	Michigan Part No.
V-6 Outboards	84 Thru	42-52	6E5-45970-10-00	S.S.	3	14 1/4 x 20	\$447	103036
		45-55	6E5-45976-10-00	S.S.	3	14 1/4 x 22	\$447	103038
		50-60	6E5-45972-10-00	S.S.	3	14 1/4 x 24	\$447	103040
		54-66	6E5-45978-10-00	S.S.	3	14 1/4 x 26	\$447	103042
V-6 Special	84 Thru	44-54	6E5-45970-10-00	S.S.	3	14 1/4 x 20	\$447	103036
		52-63	6E5-45976-10-00	S.S.	3	14 1/4 x 22	\$447	103038
		67-68	6E5-45972-10-00	S.S.	3	14 1/4 x 24	\$447	103040
		62-74	6E5-45978-10-00	S.S.	3	14 1/4 x 26	\$447	103042

High Performance Hole Shot 4-Blade Propellers

Model	Year	Boat Speed (MPH)	Nearest Equiv. Part No.	Mat'l.	Blades	Dia. & Pitch	Price	Michigan Part No.
V-6 150HP	84 Thru	50-62		S.S.	4	13 3/4 x 22	\$477	103030
175 HP	84 Thru	55-67		S.S.	4	13 3/4 x 24	\$477	103032
200 HP	84 Thru	60-72		S.S.	4	13 3/4 x 26	\$477	103034
V-6 Special	84-85							
PRO V, EXCEL	86 Thru							
225	89 Thru							
250	90 Thru							

MISCELLANEOUS

Motor & Model	Year	Boat Size & Recommendation	Blds.	Dia. & Pitch	Price	Michigan Part No.
BEARCAT (HOMELITE)						
55-85 HP	62-73	19'-17' Bts.-All Loads, Skis	3	11 1/2 x 10	PS74 \$90	152026
(Use Cupped Version for 85 HP Model at \$11.00 Net Extra)		17'-16' Bts.-All Loads, Skis	3	11 1/2 x 11	PS73 \$90	152025
		16'-14' Bts.-All Loads, Skis	3	11 1/2 x 12	PS71 \$90	152023
Motor & Model	Year	Blds.	Dia & Pitch	Mtl.	Price	Michigan Part No.
CLINTON						
3-3 1/2-4-5 HP	60-78	C15(LH) 2	7 x 4 1/2	Al.	\$48	152011
7.5,9,9.9 HP	73-78	PJ11 3	8 1/4 x 8	Al.	\$44	012008
Full Shift						
ELGIN						
5-5 1/2-6 HP	47-55	G40(LH) 2	7 1/2 x 7 1/2	Al.	\$46	152015
5 1/2 HP	56-59	GC54 2	7 1/2 x 7	Al.	\$56	072018
7 1/2 HP	49-55	G50(LH) 2	7 1/2 x 8 1/2	Al.	\$49	152017
7 1/2 HP	56-59	GC55 2	8 x 8	Al.	\$56	072019
Motor & Model	Year	Blds.	Dia & Pitch	Mtl.	Price	Michigan Part No.
MERCURY						
3 1/2-5 HP	49-55	K70(LH) 2	6 3/4 x 6 1/2	Al.	\$50	032081
6 HP	55-60	K74(LH) 2	7 1/4 x 7	Al.	\$50	032082
7 1/2 HP Mark 7	47-55	K50(LH) 2	7 5/8 x 8	Al.	\$50	032080
10 HP KE 7	47-52	K40(LH) 3	7 1/2 x 9	Al.	\$59	032079
WESTBEND-WIZARD (CHRYSLER)						
5-5 1/2-6 HP	47-48	G40(LH) 2	7 1/2 x 7 1/2	Al.	\$46	152015
7 1/2-8 HP	49-55	G50(LH) 2	7 1/2 x 8 1/2	Al.	\$49	152017

Why Stainless Steel or Nibral?

For the ultimate in longevity, choose a Michigan Wheel stainless steel prop. A Michigan Wheel stainless steel prop is five times stronger than aluminum props, and only Michigan Wheel provides a bright mirror finish on every stainless steel prop, for beauty as well as corrosion-resistance. Choose Nibral propellers and get many of the same benefits as Stainless Steel but at about half the cost.

Motor-Model-Ratio	Year	Boat Size & Speed (MPH)	OMC Equip.	Mat'l.	Blds.	Dia. & Pitch	Price	Michigan Part No.
2.3 Litre (120 HP) 400 1.71:1		Workboat (6-16)	382761	PJ87	Alum.	3 14 x 11	\$100	012047
2.5 Litre (120 HP) 400 (In Line 4) 1.71:1	78-84	Houseboats, Lt. Cruisers (14-26)	391668	PJ88C	Alum.	3 14 x 13	\$105	011001
3.0 Litre (140 HP) 400 1.71:1			391198	PJ89C	Alum.	3 13-3/4 x 15	\$105	011002
3.0 Litre (140 HP) 400 (In Line 4) 1.71:1	78-84				S.S.	3 13-3/4 x 15	\$335	013028
2.3 Litre (128 HP) Cobra (In Line 4) 2.01	88 Thru	22'-19" (24-32)	389949		Alum.	3 13-1/4 x 17	\$105	011003
2.5 Litre (120 HP) Cobra (In Line 4) 1.71:1	85-87	20'-17" (30-40)	391199	PJ90C	Alum.	3 13-3/8 x 17	\$335	013030
3.0 Litre (140 HP) Cobra (In Line 4) 1.71:1	85-87				Alum.	3 13 x 19	\$105	011004
3.0 Litre (130 HP) Cobra (In Line 4) 1.86:1	88-89	19'-16" (34-42)	390896	PJ91C	S.S.	3 13 x 19	\$335	013033
		19'-16" (34-42)	389510		Alum.	3 13 x 21	\$105	011005
		18'-15" (38-46)	389788	PJ83C	Alum.	3 13 x 21	\$335	013034
		18'-15" (38-46)	389512		S.S.	3 13 x 21		

High Performance Propellers

Boat Speed (MPH)	Nearest Equiv. Part No.	Mat'l.	No. of Blades	Dia. & Pitch	Price	Michigan Part No.
High Perf. (34-42)	394758	S.S.	3	13 1/4 X 17	\$399	013027
High Perf. (38-46)	394759	S.S.	3	13 1/4 X 19	\$399	013029
High Perf. (42-52)	394760	S.S.	3	13 1/4 X 21	\$399	013031

OMC COBRA™ /MODEL 800

Motor-Model-Ratio	Year	Boat Size & Speed (MPH)	RH OMC Equip.	LH* OMC Equip.	Mat'l.	Blds.	Dia. & Pitch	Price	RH Part No.	LH* Part No.
3.0 Litre (130-150 HP) Cobra 1.86:1	90 Thru	Non-Plane Hvy. Cruisers (0-20)			PJ199C	Alum.	3 15-1/2 x 10	\$180	011015	
3.8 Litre (185-170HP) 800 V-6 1.77:1	80-84	Non-Plane Hvy. Cruisers (7-23)	387158		PJ200	Alum.	3 15-1/2 x 13	\$123	012059	
5.0 Litre (185HP) 1.59:1	89 Thru				PJ200C	Alum.	3 15-1/2 x 13	\$123	011016	
5.0 Litre (200HP) 800 V-8 1.50:1	80-84	Non-Plane Hvy. Cruisers (7-23)	391536		PJ201C	Alum.	3 15-1/2 x 15	\$123	011006	
5.0 Litre H.O. (200HP) 1.59:1	89 Thru	26'-22" (22-32)		174926		S.S.	3 15 x 15	\$359	013052	013051
5.0 Litre (230HP) 800 V-8 1.50:1	80-84	24'-19" (28-35)	174926	174927		S.S.	3 15 x 15	\$359	013052	013051
5.8 Litre (235HP) Cobra V-8 1.41:1	89 Thru	24'-18" (30-39)	391200		PJ 202C	Alum.	3 15 x 17	\$123	011007	
4.3 Litre (175HP) Cobra V-6 1.68:1	85 Thru	24'-18" (30-39)	391290	431930		S.S.	3 15 x 17	\$359	013044	013043
4.3 Litre (205HP) Cobra V-6 1.68:1	85 Thru	24'-18" (30-39)	391290			S.S.	3 14-1/2 x 19	\$123	011008	
5.0 Litre (200HP) Cobra V-8 1.50:1	88	20'-17" (36-44)	391201		PJ203C	Alum.	3 14-1/2 x 19	\$123	011008	
5.0 Litre (230HP) Cobra V-8 1.50:1	85-88	20'-17" (36-44)	389924	390821		S.S.	3 14-1/2 x 19	\$359	013046	013045
(All Thru-Hub Exhaust)Thrust Washer 333592		19'-16" (40-49)	391202		PJ204C	Alum.	3 14-1/4 x 21	\$123	011009	
		19'-16" (40-49)	389923	390822		S.S.	3 14-1/4 x 21	\$359	013048	013047
		20'-15" (45-56)	391203		PJ205C	Alum.	3 14-1/4 x 23	\$123	011010	
		20'-15" (45-56)	389019	390823		S.S.	3 14-1/4 x 23	\$359	013050	013049
3.8 Litre (170HP) 800 V-6 1.77:1	80-84	Heavy Cruisers (22-30)	391536		PJ200C	Alum.	3 15-1/2 x 13	\$123	011016	
3.8 Litre (185HP) 800 V-6 1.77:1	80-84	28'-24" (26-36)	391535		PJ201C	Alum.	3 15-1/2 x 15	\$123	011006	
5.0 Litre (185HP) 1.59:1	89 Thru	27'-20" (32-38)	174926	174927		S.S.	3 15 x 15	\$359	013052	013051
5.0 Litre (200HP) 800 V-8 1.50:1	80-84	27'-20" (32-38)	391200		PJ202C	Alum.	3 15 x 17	\$123	011007	
5.0 Litre H.O. (200HP) 1.59:1	89 Thru	27'-20" (34-44)	391200			S.S.	3 15 x 17	\$359	013044	013043
5.0 Litre (230HP) 800 V-8 1.50:1	80-84	27'-20" (34-44)	391290	431930		S.S.	3 15 x 17	\$359	013044	013043
5.8 Litre (235HP) 1.41:1	89 Thru	22'-17" (39-50)	391201		PJ203C	Alum.	3 14-1/2 x 19	\$123	011008	
4.3 Litre (175HP) Cobra V-6 1.68:1	85 Thru	22'-17" (39-50)	389924	390821		S.S.	3 14-1/2 x 19	\$359	013046	013045
4.3 Litre (205HP) Cobra V-6 1.68:1	85 Thru	22'-17" (39-50)	391202		PJ204C	Alum.	3 14-1/4 x 21	\$123	011009	
5.0 Litre (200HP) Cobra V-8 1.50:1	88	20'-16" (44-57)	391202			S.S.	3 14-1/4 x 21	\$359	013048	013047
5.0 Litre (230HP) Cobra V-8 1.50:1	85 Thru	20'-16" (44-57)	389923	390822		S.S.	3 14-1/4 x 21	\$359	013048	013047
Thru Hub Exhaust		High Perf. (48-62)	391203		PJ205C	Alum.	3 14-1/4 x 23	\$123	011010	
		High Perf. (48-62)	389019	390823		S.S.	3 14-1/4 x 23	\$359	013050	013049
5.7 Litre (260 HP) 800 V-8 1.41:1	78-84	Heavy Cruisers (25-32)	391536		PJ200C	Alum.	3 15-1/2 x 13	\$123	011016	
5.7 Litre (260 HP) Cobra V-8 1.4:1	85 Thru	28'-22" (30-37)	391535		PJ201C	Alum.	3 15-1/2 x 15	\$123	011006	
5.7 Litre (270 HP) King Cobra 1.41:1	88 Thru	26'-19" (33-39)	174926	174927		S.S.	3 15 x 15	\$359	013052	013051
7.5 Litre (335-340 HP) King Cobra	87 Thru	26'-19" (35-46)	391200		PJ202C	Alum.	3 15 x 17	\$123	011007	
7.4 Litre (370 HP) King Cobra	90 Thru	26'-19" (35-46)	391290	431930		S.S.	3 15 x 17	\$359	013044	013043
		24'-18" (40-52)	391201		PJ203C	Alum.	3 14-1/2 x 19	\$123	011008	
		24'-18" (40-52)	389924	390821		S.S.	3 14-1/2 x 19	\$359	013046	013045
		22'-17" (46-60)	391202		PJ204C	Alum.	3 14-1/4 x 21	\$123	011009	
		22'-17" (46-60)	389923	390822		S.S.	3 14-1/4 x 21	\$359	013048	013047
"Heavy-Duty Special"		High Perf. (51-66)	391203		PJ205C	Alum.	3 14-1/4 x 23	\$123	011010	
Hard to Plane Boats		High Perf. (51-66)	389019	390823		S.S.	3 14-1/4 x 23	\$359	013050	013049
Thru Hub Exhaust		32' + Twin (38-47)			SSO817C	S.S.	3 15-1/4 x 17	\$440	013015	013019
		28'-24" Single (38-47)			SSO817C	S.S.	3 15-1/4 x 17	\$440	013015	
		28'-24" Twin (44-53)			SSO819C	S.S.	3 15 x 19	\$440	013016	013021
		24'-22" Single (44-53)			SSO819C	S.S.	3 15 x 19	\$440	013016	
		28'-24" Twin (50-58)			SSO821C	S.S.	3 14-1/2 x 21	\$440	013017	013023
		22'-20" Single (50-58)			SSO821C	S.S.	3 14-1/2 x 21	\$440	013017	



(High Performance Propellers) OMC Model 800 & OMC Cobra™

Model	Year	Boat Speed (MPH)	Nearest Equiv. Part No.	Mat'l.	No. of Blades	Dia. & Pitch	Price	Michigan Part No.
V-6	80 Thru	40-49	394753	S.S.	3	14 1/4 x 20	\$444	013054
3.8, 4.3 Litre		45-56	394754	S.S.	3	14 1/4 x 22	\$444	013056
170, 175, 185, 205 Sterndrives		50-60	394755	S.S.	3	14 1/4 x 24	\$444	013058
V-8	78 Thru	45-57	394753	S.S.	3	14 1/4 x 20	\$444	013054
5.0 Litre		48-62	394754	S.S.	3	14 1/4 x 22	\$444	013056
185, 200, 225, 230 Sterndrives		52-66	394755	S.S.	3	14 1/4 x 24	\$444	013058
		65+	394756	S.S.	3	14 1/4 x 26	\$444	013060
V-8	78 Thru	46-60	394753	S.S.	3	14 1/4 x 20	\$444	013054
5.7, 7.5, 7.4, Litre Sterndrives		51-66	394754	S.S.	3	14 1/4 x 22	\$444	013056
		65+	394755	S.S.	3	14 1/4 x 24	\$444	013058

* For Twin Engine Installations, Increase pitch 4".

OMC SEA DRIVE ('82 THRU)

SEA DRIVE

Motor-Model-Ratio	Year	Boat Size & Speed (MPH)	RH OMC Equiv.	LH* OMC Equiv.	Mat'l.	Blds. Dia. & Pitch	Price	RH Part No.	LH* Part No.
2.0 Litre 140 HP (V-4) 2.25:1	89 Thru	Barges, Houseboats(10-25)	391536		PJ200C Alum.	3 15-1/2 x 13	\$123	011016	
2.5 Litre 150 HP (V-6) 1.86:1	82-87	36'-32' Twin(24-34)	391535		PJ201C Alum.	3 15-1/2 x 15	\$123	011006	
2.6 Litre 205 HP (V-6) 1.86:1	82-87	36'-32' Twin(27-36)	174926	174927	S.S.	3 15 x 15	\$359	013052	013051
2.6 Litre 190 HP (V-6) 1.86:1	87 Thru	27'-24' Single(30-40)	391200		PJ202C Alum.	3 15 x 17	\$123	011007	
2.7 Litre 225 HP (V-6) 1.86:1	87 Thru	33'-30' Twin(30-40)	391290	431930	S.S.	3 15 x 17	\$359	013044	013043
3.0 Litre 225 HP (V-6) 1.86:1	89 Thru	24'-21' Single(36-47)	391201		PJ203C Alum.	3 14-1/2 x 19	\$123	011008	
3.6 Litre 275 HP (V-8) 1.77:1	87 Thru	30'-27' Twin(36-47)	389924	390821	S.S.	3 14-1/2 x 19	\$359	013046	013045
4.0 Litre 300 HP (V-8)	89 Thru	22'-18' Single(42-54)	391202		PJ204C Alum.	3 14-1/4 x 21	\$123	011009	
		28'-25' Twin(42-54)	389923	390822	S.S.	3 14-1/4 x 21	\$359	013048	013047
		25'-23' Twin(50-62)	391203		PJ205C Alum.	3 14-1/4 x 23	\$123	011010	
		25'-23' Twin(50-62)	389019	390823	S.S.	3 14-1/4 x 23	\$359	013050	013049
"Heavy-Duty Special Applications" (Hard to Plane Boats)		32' + Twin(35-45)			SSO817C S.S.	3 15-1/4 x 17(RH)	\$440	013015	
					S.S.	3 15-1/4 x 17(LH)	\$440		013019
2.0 Litre 140 HP (V-4) 2.25:1	89 Thru	28'-24' Single(35-45)			SSO817C S.S.	3 15-1/4 x 17(RH)	\$440	013015	
2.5 Litre 150 HP (V-6) 1.86:1	82-87	28'-24' Twin(40-48)			SSO819C S.S.	3 15 x 19(RH)	\$440	013016	
2.6 Litre 205 HP (V-6) 1.86:1	82-87				S.S.	3 15 x 19(LH)	\$440		013021
2.6 Litre 190 HP (V-6) 1.86:1	87 Thru				S.S.	3 15 x 19(LH)	\$440		
2.7 Litre 225 HP (V-6) 1.86:1	87 Thru	24'-22' Single(40-48)			SSO819C S.S.	3 15 x 19(RH)	\$440	013016	
3.0 Litre 225 HP (V-6) 1.86:1	89 Thru	24'-22' Twin(45-53)			SSO821C S.S.	3 14-1/2 x 21(RH)	\$440	013017	
3.6 Litre 275 HP (V-8) 1.77:1	87 Thru				S.S.	3 14-1/2 x 21(LH)	\$440		013023
4.0 Litre 300 HP (V-8)		22'-20' Single(45-53)			SSO821C S.S.	3 14-1/2 x 21	\$440	013017	
1.6 Litre 115 HP (V-4) 2:1	82 Thru	Barges, Houseboats(1-18)	382761		PJ87 Alum.	3 14 x 11	\$100	012047	
1.8 Litre 140 HP (V-4) 2:1	87 Thru	26'+(14-28)	391668		PJ88C Alum.	3 14 x 13	\$105	011001	
		26'-22'(24-26)	391198		PJ89C Alum.	3 13-3/4 x 15	\$105	011002	
		26'-22'(24-36)	389949		S.S.	3 13-3/4 x 15	\$335	013028	
		22'-19'(30-42)	391199		PJ90C Alum.	3 13-1/4 x 17	\$105	011003	
		22'-19'(30-40)	389948		S.S.	3 13-3/8 x 17	\$335	013030	
1.6 Litre 115 HP (V-4) 2:1	82 Thru	20'-17'(38-50)	390896		PJ91C Alum.	3 13 x 19	\$105	011004	
1.8 Litre 140 HP (V-4) 2:1	87 Thru	20'-17'(38-50)	389510		S.S.	3 13 x 19	\$335	013033	
		18'-15'(44-56)	389788		Alum.	3 13 x 21	\$105	011005	
		18'-15'(44-56)	389512		S.S.	3 13 x 21	\$335	013034	

High Performance Propellers

Boat Speed (MPH)	Nearest Equiv. Part No.	Mat'l.	No. of Blades	Dia. & Pitch	Price	Michigan Part No.
High Perf. (30-42)	394758	S.S.	3	13 1/4 x 17	\$399	013027
High Perf. (38-50)	394759	S.S.	3	13 1/4 x 19	\$399	013029
High Perf. (44-56)	394760	S.S.	3	13 1/4 x 21	\$399	013031

* For Twin Engine Installation, Increase Pitch 4".

OUTBOARD MARINE (OMC) MODEL 14 LARGE GEAR CASE ('67-'77)

HP Range: 120 to 245. Recom.(For twin installations increase pitch 2")							
Approx. HP	Thru 17'	Boat Length			Metal	Price	Michigan Part No.
		18'-21'	22'-25'	Houseboats, Barges			
100-120 HP	14 x 16	14 x 14	14 x 12	14 x 11			
140-170 HP	14 x 18	14 x 16	14 x 14	14 x 12			
185-245 HP	14 x 20	14 x 18	14 x 16	14 x 14			
Right Hand Part No.	OMC Equiv. No. (RH Only)	Dia. & Pitch	Blds.				
SMC304	380189	14-1/4 x 18	3	Alum.	\$158	012103	
SMC308	380188	14-1/4 x 16	3	Alum.	\$158	012104	
SMC312	380074	14-1/4 x 14	3	Alum.	\$158	012105	
PR105	381442	13 x 14	3	Alum.	\$150	012087	
PR115	382676	14 x 11	3	Alum.	\$150	012089	
PR118	382017	14 x 12	3	Alum.	\$150	012090	
PR120	381185	14 x 14	3	Alum.	\$150	012091	
PR122	381186	14 x 16	3	Alum.	\$150	012092	
PR124	381187	14 x 18	3	Alum.	\$150	012093	
PR126	383287	14 x 20	3	Alum.	\$150	012094	

OUTBOARD MARINE (OMC) MODEL 13 LARGE GEAR CASE ('64-'66)

HP Range: 120 to 150. Recom.(For twin installations increase pitch 2")							
Approx. HP	Thru 17'	Boat Length			Metal	Price	Part No.
		18'-21'	22'-25'	Houseboats, Barges			
120 HP	14 1/4 x 20	14 1/4 x 18	14 1/4 x 16	14 1/4 x 14			
150 HP	14 1/4 x 22	14 1/4 x 20	14 1/4 x 18	14 1/4 x 16			
Part No.	OMC Equiv. No.	Dia. & Pitch	Blds.				
SMC304	380189	14 1/4 x 18	3	Alum.	\$158	012103	
SMC308	380188	14 1/4 x 16	3	Alum.	\$158	012104	
SMC312	380074	14 1/4 x 14	3	Alum.	\$158	012105	

OUTBOARD MARINE (OMC) 80- 90 HP 2 CYCLE ('68) SMALL GEARCASE; MARINE DRIVE SYSTEMS/RANGER

HP Range: 80 to 120. Recom.(For twin installations increase pitch 2")							
Approx. HP	Thru 17'	Boat Length			Metal	Price	Numeric
		18'-21'	22'-25'	Houseboats, Barges			
80-90 HP	10 x 11	10-1/4 x 10	10-1/4 x 9	10-1/2 x 8			
110-120 HP	10 x 13	10 x 11	10-1/4 x 10	10-1/4 x 9			
	OMC Equiv. No.	Dia. & Pitch	Blds.				
	SMC862	10-1/4 x 9	3	Alum.	\$76	012106	
	SMC864	10-1/2 x 8	3	Alum.	\$76	012107	
	PJ75	10-1/4 x 10	3	Alum.	\$65	012043	
	PJ76	10 x 11	3	Alum.	\$61	012044	
	PJ77	10 x 12	3	Alum.	\$61	012045	
	PJ78	9-1/2 x 10	3	Alum.	\$65	012046	
	*PJ73	10 x 11	3	Alum.	\$60	012041	
	*PJ74	10 x 9-1/4	3	Alum.	\$60	012042	

* Small Hub Prop - uses special small nut - Part No. 302001 - \$14.00

OMC SAILDRIVE

Right Hand Part No.	Dia. & Pitch	Blds.	Metal	Price	Michigan Part No.
PJ41	10-1/2 x 10	3	Alum.	\$57	012027

MERCUISER ALPHA ONE™ / MERCUISER™ STERNDRIVE (BLACK MAX SERIES PROPS) (1983 THRU)

Motor-Model-Ratio	Year	Boat Size & Speed (MPH)	Nearest Merc Equiv.	Mat'l.	Blds.	Dia. & Pitch	Price	Michigan Part No.
2.5 L (120 HP) Alpha One 1.98:1	86-89	Non-Plane Hvy. Cruisers (0-10)	48-78112A40	PM211C	Alum.	3 16 x 11	\$136	031021
3.0 L (125-140 HP) Alpha One 1.98:1	86 Thru	Non-Plane Hvy. Cruisers (8-22)	48-78114A40	PM213C	Alum.	3 16 x 13	\$136	031022
3.0 LX (145 HP) Alpha One 1.98:1	90 Thru	21'-26' (18-31)	48-16312A5	SSM245C	S.S.	3 14 1/2 x 15	\$407	033002-1
3.7 L (165-170 HP) Alpha One 1.84:1	86-89	21'-26' (18-31)	48-78116A40	PM215C	Alum.	3 15 1/4 x 15	\$136	031023
3.7 LX (180-190 HP) Alpha One 1.84:1	86-89	19'-23' (27-37)	48-16314A5	SSM247C	S.S.	3 14 1/2 x 17	\$407	033003-1
120 (120 HP) Mercruiser 1.98:1	83-85	19'-23' (27-37)	48-78118A40	PM217C	Alum.	3 14 1/2 x 17	\$136	031024
140 (140 HP) Mercruiser 1.98:1	83-85	17'-21' (33-42)	48-16316A5	SSM249C	S.S.	3 14 x 19	\$407	033004-1
170 (170 HP) Mercruiser 1.84:1	1985	17'-21' (33-42)	48-78120A40	PM219C	Alum.	3 14 x 19	\$136	031025
185 (185 HP) Mercruiser 1.84:1	1985	Up to 19' (37-46)	48-16318A5	SSM251C	S.S.	3 13 3/4 x 21	\$407	033005-1
190 (190 HP) Mercruiser 1.84:1	1985	Up to 19' (37-46)	48-78122A40	PM221C	Alum.	3 13 3/4 x 21	\$136	031026
470 (170 HP) Mercruiser 1.65:1/1.84:1	83-84	Up to 18' (40-50)	48-16320A5	SSM253C	S.S.	3 13 1/2 x 23	\$407	033006-1
488 (188 HP) Mercruiser 1.65:1/1.84:1	83-84	Up to 18' (40-50)	48-78124A40	PM223C	Alum.	3 13 1/2 x 23	\$136	031027
4.3 L (175-185 HP) Alpha One 1.84:1	86 Thru	Non-Plane Hvy. Cruisers (0-10)	48-78112A40	PM211C	Alum.	3 16 x 11	\$136	031021
4.3 LX (205 HP) Alpha One 1.84:1	86 Thru	Houseboats (8-26)	48-78114A40	PM213C	Alum.	3 16 x 13	\$136	031022
5.0 L (200 HP) Alpha One 1.65:1	86 Thru	23'-28' (19-38)	48-16312A5	SSM245C	S.S.	3 14 1/2 x 15	\$407	033002-1
5.0 LX (230 HP) Alpha One 1.5:1	86 Thru	23'-28' (19-38)	48-78116A40	PM215C	Alum.	3 15 1/4 x 15	\$136	031023
205 (205 HP) Mercruiser 1.65:1	1985	21'-26' (29-45)	48-16314A5	SSM247C	S.S.	3 14 1/2 x 17	\$407	033003-1
200 (200 HP) Mercruiser 1.65:1	1985	21'-26' (29-45)	48-78118A40	PM217C	Alum.	3 14 1/2 x 17	\$136	031024
230 (230 HP) Mercruiser 1.50:1	1985	19'-25' (35-49)	48-16316A5	SSM249C	S.S.	3 14 x 19	\$407	033004-1
898 (198 HP) Mercruiser 1.50:1	83-84	19'-25' (35-49)	48-78120A40	PM219C	Alum.	3 14 x 19	\$136	031025
228 (228 HP) Mercruiser 1.50:1	83-84	17'-23' (41-56)	48-16318A5	SSM251C	S.S.	3 13 3/4 x 21	\$407	033005-1
		17'-23' (41-56)	48-78122A40	PM221C	Alum.	3 13 3/4 x 21	\$136	031026
		Up to 20' (47-62)	48-16320A5	SSM253C	S.S.	3 13 1/2 x 23	\$407	033006-1
		Up to 20' (47-62)	48-78124A40	PM223C	Alum.	3 13 1/2 x 23	\$136	031027
		42-48 MPH	48-16546A40	"EDGE II"	S.S.	3 14 1/4 x 20	\$457	033060
		47-53 MPH	48-16548A40	"EDGE II"	S.S.	3 14 1/4 x 22	\$457	033062
		52-58 MPH	48-16550A40	"EDGE II"	S.S.	3 14 1/4 x 24	\$457	033064
		55-64 MPH	48-16552A40	"EDGE II"	S.S.	3 14 1/4 x 26	\$457	033066
5.7 L (260 HP) Alpha One 1.5:1	86 Thru	Non-Plane Hvy. Cruisers (0-10)	48-78112A40	PM211C	Alum.	3 16 x 11	\$136	031021
260 (260 HP) Mercruiser 1.32:1/1.50:1	83-85	Houseboats (8-26)	48-78114A40	PM213C	Alum.	3 16 x 13	\$136	031022
350 Magnum (270 HP) Alpha One 1.5:1	87 Thru	24'-29' (19-38)	48-16312A5	SSM245C	S.S.	3 14 1/2 x 15	\$407	033002-1
454 Magnum (330 HP) Alpha One 1.32:1	1987	24'-29' (19-38)	48-78116A40	PM215C	Alum.	3 15 1/4 x 15	\$136	031023
		22'-27' (32-47)	48-16314A5	SSM247C	S.S.	3 14 1/2 x 17	\$407	033003-1
		22'-27' (32-47)	48-78118A40	PM217C	Alum.	3 14 1/2 x 17	\$136	031024
		20'-25' (42-50)	48-16316A5	SSM249C	S.S.	3 14 x 19	\$407	033004-1
		20'-25' (42-50)	48-78120A40	PM219C	Alum.	3 14 x 19	\$136	031025
		19'-23' (47-56)	48-16318A5	SSM251C	S.S.	3 13 3/4 x 21	\$407	033005-1
		19'-23' (47-56)	48-78122A40	PM221C	Alum.	3 13 3/4 x 21	\$136	031026
		Up to 22' (52-62)	48-16320A5	SSM253C	S.S.	3 13 1/2 x 23	\$407	033006-1
		Up to 22' (52-62)	48-78124A40	PM223C	Alum.	3 13 1/2 x 23	\$136	031027
		42-52 MPH	48-16546A40	"EDGE II"	S.S.	3 14 1/4 x 20	\$457	033060
		50-58 MPH	48-16548A40	"EDGE II"	S.S.	3 14 1/4 x 22	\$457	033062
		57-65 MPH	48-16550A40	"EDGE II"	S.S.	3 14 1/4 x 24	\$457	033064
		65 + MPH	48-16552A40	"EDGE II"	S.S.	3 14 1/4 x 26	\$457	033066
V-8 Thru 260 HP Twin Engine (260 HP Max.)	83 Thru	30'+ (40-45)		SSM272C	S.S.	3 15 1/4 x 17(RH)	\$458	033020-1
					S.S.	3 15 1/4 x 17(LH)	\$458	033023-1
		25'-30' (44-48)		SSM292C	S.S.	3 15 x 19(RH)	\$458	033021-1
					S.S.	3 15 x 19(LH)	\$458	033025-1
		22'-25' (48-55)		SSM312C	S.S.	3 14 1/2 x 21(RH)	\$458	033022-1
					S.S.	3 14 1/2 x 21(LH)	\$458	033027-1

*CAUTION: Standard Trim Tab is 31640A1; standard thrust washer 13171. Mercruiser I props (1982 and before) on this stern drive require thrust washer 56292A1. NOTE: (For twin engines increase pitch 4").

MERCUISER BRAVO ONE™ / MAGNUM SERIES STERNDRIVE

THE WAVE™ High-Performance Propellers

Motor-Model	Year	Boat Size & Speed (MPH)	Nearest Merc Equiv.	Mat'l.	Blds.	Dia. & Pitch	Price	Michigan Part No.
350 Magnum*	87 Thru	22'-25' Bts.-All Loads, Skis	48-13700A41	"WAVE"	S.S.	3 15-1/4 x 19	\$446	033030
		21'-23' Bts.-All Loads, Skis	48-13702A41	"WAVE"	S.S.	3 14-3/4 x 21	\$446	033032
		Up to 22' Bts.-All Loads, Skis	48-13704A41	"WAVE"	S.S.	3 14-5/8 x 23	\$446	033034
		Up to 22' Bts.-Light Loads	48-13706A41	"WAVE"	S.S.	3 14-1/2 x 25	\$446	033036
7.4 Litre Bravo One	88 Thru	26'-30' Bts.-All Loads	48-13700A41	"WAVE"	S.S.	3 15-1/4 x 19	\$446	033030
454 Magnum (Alpha One Drive)*	1987	24'-28' Bts.-All Loads, Skis	48-13702A41	"WAVE"	S.S.	3 14-3/4 x 21	\$446	033032
454 Magnum	88 Thru	23'-26' Bts.-All Loads, Skis	48-13704A41	"WAVE"	S.S.	3 14-5/8 x 23	\$446	033034
		20'-24' Bts.-All Loads, Skis	48-13706A41	"WAVE"	S.S.	3 14-1/2 x 25	\$446	033036
502 Magnum	90 Thru	27'-33' Bts.-All Loads, Skis	48-13242A5	"WAVE"	S.S.	3 15-1/4 x 19	\$469	033052
Solid Hub Propellers, 370 HP and Above		25'-29' Bts.-All Loads, Skis	48-13244A5	"WAVE"	S.S.	3 14-3/4 x 21	\$469	033054
		24'-27' Bts.-All Loads, Skis	48-13246A5	"WAVE"	S.S.	3 14-5/8 x 23	\$469	033056
		21'-25' Bts.-All Loads, Skis	48-13248A5	"WAVE"	S.S.	3 14-1/2 x 25	\$469	033058
Counter-Rotating (LH) Propellers			48-13701A41	"WAVE"	S.S.	3 15-1/4 x 19	\$446	033029
Rubber Hub Insert Thru 370 HP			48-13703A41	"WAVE"	S.S.	3 14-3/4 x 21	\$446	033031
			48-13705A41	"WAVE"	S.S.	3 14-5/8 x 23	\$446	033033
			48-13707A41	"WAVE"	S.S.	3 14-1/2 x 25	\$446	033035
Counter-Rotating (LH) Propellers			48-13241A5	"WAVE"	S.S.	3 15-1/4 x 19	\$469	033051
Solid Hub, 370 HP and Above			48-13243A5	"WAVE"	S.S.	3 14-3/4 x 21	\$469	033053
			48-13245A5	"WAVE"	S.S.	3 14-5/8 x 23	\$469	033055
			48-13247A5	"WAVE"	S.S.	3 14-1/2 x 25	\$469	033057

* These Propellers require the use of anodic plate (76214) in place of the standard trim tab. NOTE: All recommendations are based on single engine boats. For dual engines, add 4" in pitch.

MERCURY MERCUISER™ 1A, 1B, 1C, 120, 140, 145 DTS, 165, 228, 470, 485, 888, 898, 225S, 233, 255 TRS, 260, 280 TRS (THRU 1982)

HP Range: 110 to 280. Recom.(For twin installations increase pitch 2")
(Old style-shift plate on back of engine or transom plate thrust hub 56292)

Approx. HP	Boat Length			
	Thru 17'	18'-20'	21'-22'	23'-25'
110-120 HP	15 x 23C	15-1/4 x 21C	15-1/2 x 19C	15-3/4 x 17C
140HP (1.68:1 GEAR)	15-1/4 x 21C	15-1/2 x 19C	15-3/4 x 17C	16 x 15C
140HP (1.98:1 GEAR)	15 x 23C	15-1/4 x 21C	15-1/2 x 19C	15-3/4 x 17C
150-165-170HP	15 x 23C	15-1/4 x 21C	15-1/2 x 19C	15-3/4 x 17C
185-188-198-225-228-233HP	15 x 23C	15-1/4 x 21C	15-1/2 x 19C	15-3/4 x 17C
225-280HP	15 x 23C	15-1/4 x 21C	15-1/2 x 19C	15-3/4 x 17C

RH Part No.	Nearest Merc. Equiv.	Dia. & Pitch	Blds.	Metal	Price	Part No.
SMC504C	48-36020A4	16 x 13	3	Alum.	\$136	031034
SMC374C	48-79570A4	16 x 15	3	Alum.	\$134	031035
SMC376C	48-79572A4	15-3/4 x 17	3	Alum.	\$134	031036
SSM350C		15-3/4 x 17	3	S.S.	\$403	033007
SMC378C	48-79574A4	15-1/2 x 19	3	Alum.	\$134	031037
SSM354C		15-1/2 x 19	3	S.S.	\$403	033008
SMC380C	48-79576A4	15-1/4 x 21	3	Alum.	\$134	031038
SSM358C		15-1/4 x 21	3	S.S.	\$403	033009
SMC382C	48-79578A4	15 x 23	3	Alum.	\$134	031039
SMC384C	48-79580A4	15 x 25	3	Alum.	\$134	031040

*Caution: Standard trim tab is 34127A1; standard thrust washer 56292A1. Black Max series props used on these drives will require trim tab 31640A1 and thrust washer 13171.
NOTE: All Props in above listing have Cupped Blade Edges.

MERCURY MERCUISER™ I ('62-'63) MERCUISER™ 80,90

HP Range: 80 to 140. Recom. (For twin installations increase pitch 2")

Approx. HP	Boat Length				
	Thru 17'	18'-21'	22'-25'	Houseboats, Barges	
80-90-HP	13 x 15	13 x 13	13 x 11	13 x 11	14 x 10
110 HP	13 x 17	13 x 15	13 x 13	13 x 11	14 x 12
140 HP	13 x 21	13 x 19	13 x 17	13 x 15	14 x 14

RH Part No.	Nearest Merc. Equiv.	Dia. & Pitch	Blds.	Metal	Price	Part No.
PR151	C48-35936A3	13 x 11	3	Alum.	\$111	032089
PR153	C48-32392A3	13 x 13	3	Alum.	\$111	032090
PR155	C48-32390A3	13 x 15	3	Alum.	\$111	032091
PR157	C48-32264A3	13 x 17	3	Alum.	\$111	032092
PR159	C48-32750A3	13 x 19	3	Alum.	\$111	032093
PR161	C48-32746A3	13 x 21	3	Alum.	\$111	032094
PR163	C48-52008A3	13 x 23	3	Alum.	\$111	032095

MERCURY MERCUISER™ II

HP Range: 170 to 325. Recom. (For twin installations increase pitch 2")

Approx. HP	Drive Ratio	Boat Length				Houseboats, Barges
		Thru 17'	18'-21'	22'-25'		
170-190 HP	1.33:1	15 1/4 x 17	16 1/4 x 14	16 1/4 x 13	16 1/4 x 13	16 3/4 x 12
	1.78:1	16 x 25	16 3/8 x 23	16 3/4 x 21	16 x 16	16 x 16
225 HP	1.33:1	15 1/4 x 18	16 x 15	16 1/4 x 14	16 1/4 x 13	16 3/4 x 12
	1.78:1	15 3/4 x 27	16 x 25	16 3/8 x 23	13 x 16	16 x 16
300-325 HP	1.33:1	16 3/4 x 19	15 1/4 x 18	15 1/4 x 17	16 1/4 x 13	16 3/4 x 12

Aluminum Props Only							
SMC	Part No. LH	Nearest Merc. Equiv. LH	SMC	Part No. RH	Nearest Merc. Equiv. RH	Dia. & Pitch Blds.	Price
SMC805	032107	48-49971	SMC804	032108	48-49972	16 3/8 x 23 3	\$225
SMC807	032109	48-33879				16 3/4 x 21 3	\$225
			SMC808	072112	48-33882	16 3/4 x 19 3	\$225
SMC737	072091	48-31673	SMC721	072090	48-31674	15 1/4 x 17 3	\$225
SMC765	072101					16 x 16 3	\$253
SMC736	072089	48-31671	SMC720	072088	48-31672	16 x 15 3	\$225

MERCURY BRAVO TWO™ & MERCUISER™ II (THRU 1988)

For twin installations increase pitch 2"

Merc. Equiv. No.	Dia & Pitch	Rotation	Blds.	Boat Length		
				22'-28'	25'-30'	25'-34'
				19 1/2 x 21	19 3/4 x 19	20 x 17
48-77900A10	19-1/2 x 21	RH	3	Alum.	\$471	032117
48-77901A10	19-1/2 x 21	LH	3	Alum.	\$471	032118
48-77898A10	19-3/4 x 19	RH	3	Alum.	\$471	032115
48-77899A10	19-3/4 x 19	LH	3	Alum.	\$471	032116
48-77896A10	20 x 17	RH	3	Alum.	\$471	032113
48-77897A10	20 x 17	LH	3	Alum.	\$471	032114

MERCURY MERCUISER™ MODEL O

HP Range: 60 HP. Recom.(For twin installations increase pitch 2")

Merc. Equiv. No.	Dia & Pitch	Blds.	Metal	Boat Length		
				Thru 17'	18'-21'	22'-25'
				10 1/4 x 15	10 1/4 x 13	10 1/4 x 11
PR31	48-32194A1	10 1/4 x 9	3	Alum.	\$99	032083
PR33	48-33774A1	10 1/4 x 10	3	Alum.	\$99	032084
PR35	48-38098A1	10 1/4 x 11	3	Alum.	\$99	032085
PR37	48-38094A1	10 1/4 x 12	3	Alum.	\$99	032086
PR39	48-38090A1	10 1/4 x 13	3	Alum.	\$99	032087
PR43	48-38086A1	10 1/4 x 15	3	Alum.	\$99	032088

MARINE DRIVE SYSTEMS MODEL 91 (1-1/2" TAPERED SHAFT WITH KEY)* (MODEL 82, 83, 103, 113, 1013, 260TD3 (SPLINED SHAFT))**

Model	Dia. & Pitch	Blds.	Metal	Rot.	Michigan Part No. LH	Michigan Part No. RH	Price
*	18 x 15	3	Alum.	LH	132001	RH 132002	\$244
*	18 x 16	3	Alum.	LH	132003	RH 132004	\$244
*	18 x 17	3	Alum.	LH	132005	RH 132006	\$244
*	18 x 18	3	Alum.	LH	132007	RH 132008	\$244
*	18 x 19	3	Alum.	LH	132009	RH 132010	\$244
*	18 x 20	3	Alum.	LH	132011	RH 132012	\$244
*	18 x 21	3	Alum.	LH	132013	RH 132014	\$244
*	19 x 15	3	Alum.	LH	132015	RH 132016	\$244
*	19 x 16	3	Alum.	LH	132017	RH 132018	\$244
*	19 x 17	3	Alum.	LH	132019	RH 132020	\$244
*	19 x 18	3	Alum.	LH	132021	RH 132022	\$244
*	19 x 23	3	Alum.	LH	132023	RH 132024	\$244
*	19 x 25	3	Alum.	LH	132025	RH 132026	\$244
*	19 x 27	3	Alum.	LH	132027	RH 132028	\$244
*	20 x 15	3	Alum.	LH	132029	RH 132030	\$244
*	20 x 16	3	Alum.	LH	132031	RH 132032	\$244
*	20 x 17	3	Alum.	LH	132033	RH 132034	\$244
*	20 x 18	3	Alum.	LH	132035	RH 132036	\$244
*	20 x 19	3	Alum.	LH	132037	RH 132038	\$244
*	20 x 20	3	Alum.	LH	132039	RH 132040	\$244
*	20 x 21	3	Alum.	LH	132041	RH 132042	\$244
**	18 x 15	3	Alum.	LH	132057	RH 132058	\$244
**	18 x 16	3	Alum.	LH	132059	RH 132060	\$244
**	18 x 17	3	Alum.	LH	132061	RH 132062	\$244
**	18 x 18	3	Alum.	LH	132063	RH 132064	\$244
**	18 x 19	3	Alum.	LH	132065	RH 132066	\$244
**	18 x 20	3	Alum.	LH	132067	RH 132068	\$244
**	18 x 21	3	Alum.	LH	132069	RH 132070	\$244
**	19 x 15	3	Alum.	LH	132071	RH 132072	\$244
**	19 x 16	3	Alum.	LH	132073	RH 132074	\$244
**	19 x 17	3	Alum.	LH	132075	RH 132076	\$244
**	19 x 18	3	Alum.	LH	132077	RH 132078	\$244
**	19 x 19	3	Alum.	LH	132079	RH 132080	\$244
**	19 x 20	3	Alum.	LH	132081	RH 132082	\$244
**	19 x 21	3	Alum.	LH	132083	RH 132084	\$244

Motor & Model	Year	Boat Size & Recommendation	Blds.	Dia. & Pitch	Nearest Yamaha Equiv.	ALUMINUM			STAINLESS STEEL		
						Price	Michigan Part No.	Nearest Yamaha Equiv.	Price	Michigan Part No.	
3.0 L (130 HP)	89 Thru	21'-26' Bts. (18-31)	3	15-1/4 x 15	6G5-45941-00-98	PY415C	\$130	101010			
EST/PSR		19'-23' Bts. (27-37)	3	14-1/2 x 17	6G5-45947-01-98	PY417C	\$130	101011	6G5-45978-01-98	SSY717C	\$411 103018
4.3 L (205 HP)	89 Thru	17'-21' Bts. (33-42)	3	14 x 19	6G5-45945-01-98	PY419C	\$130	101012	6G5-45974-01-98	SSY719C	\$411 103020
EST/YEMS/PSR		Up to 19' (37-46)	3	13-3/4 x 21	6G5-45943-00-EL	PY421C	\$130	101013	6G5-45972-01-98	SSY721C	\$411 103022
		Up to 18' (40-50)	3	13-1/2 x 23	6G5-45949-00-98	PY423C	\$130	101014	6G5-45976-01-98	SSY723C	\$411 103024
5.0 L (205 HP)	89 Thru	23'-28' Bts. (19-38)	3	15-1/4 x 15	6G5-45941-00-98	PY415C	\$130	101010			
EST/PSR/YEMS		21'-26' Bts. (29-45)	3	14-1/2 x 17	6G5-45947-01-98	PY417C	\$130	101011	6G5-45978-01-98	SSY717C	\$411 103018
5.7L (260HP)	89 Thru	19'-25' Bts. (35-49)	3	14 x 19	6G5-45945-01-98	PY419C	\$130	101012	6G5-45974-01-98	SSY719C	\$411 103020
EST/PSR/YEMS		17'-23' Bts. (41-56)	3	13-3/4 x 21	6G5-45943-00-EL	PY421C	\$130	101013	6G5-45972-01-98	SSY721C	\$411 103022
		Up to 20' (47-62)	3	13 1-2 x 23	6G5-45949-00-98	PY423C	\$130	101014	6G5-45976-01-98	SSY723C	\$411 103024

CHRYSLER MODEL 40

HP Range: 80 HP. Recom.(For twin installations increase pitch 2")

Thru 17'	Boat Length		Houseboats, Barges
	18'-21'	22'-25'	
11-1/2 x 12	11-1/2 x 11	11-1/2 x 9	11-1/2 x 8
Dia & Pitch	Blds.	Metal	Price
PS74 11-1/2 X 10	3	Alum.	\$90 152026
PS73 11-1/2 X 11	3	Alum.	\$90 152025
PS71 11-1/2 X 12	3	Alum.	\$90 152023

CHRYSLER MODEL 300

HP Range: 105 to 270 HP. Recom.(For twin installations increase pitch 2")

Approx. HP	Drive Ratio	Boat Length			
		Thru 17'	18'-21'	21'-22'	23'-25'
105@4000	2:1	14 x 21C	14 x 19C	14 x 17C	
140@4800	2:1	14 x 21C	14 x 19C	14 x 17C	
155@4450	1.75:1	14 x 21C	14 x 19C	14 x 17C	
195@4400	1.5:1		14 x 21C	14 x 19C	14 x 17C
245@4600	1.5:1		14 x 21C	14 x 19C	14 x 17C
270@4600	1.5:1		14 x 21C	14 x 21C	14 x 17C
LH Part No.	RH Part No.	Dia & Pitch	Blds.	Metal	Price
	AMC104C	071002	14 x 17	3 Alum.	\$173
	AMC128C	071010	15 x 15	3 Alum.	\$186
AMC131C	071013	AMC130C	071012	15 x 17	3 Alum. \$186
	AMC132C	071014	15 x 19	3 Alum.	\$186
	AMC152C	071021	16 x 17	3 Alum.	\$194

CHRYSLER DRIVE 90 MODEL 80,81; MUNCIE TURBOMARINE FLEXDRIVE NO. 302C, 501C,503, 700 & 900; MARINE DRIVE SYSTEMS MODEL 80, 81, 101, 111, 1011, 260TD1

HP Range: 110 to 300. Recom. (For twin installations increase pitch 2")

Approx. HP	Drive Ratio	Boat Length			
		18'-21'	22'-25'	Houseboats, Barges	
110 HP	2:1	16 x 16	15 x 15	15-1/4 x 13	
150-155 HP	1.3:1	16 x 16	15 x 15	15-1/4 x 13	
	1.6:1	15-1/4 x 18	15-1/4 x 17	15-1/4 x 13	
175 HP	2:1	17 x 19	17 x 17	17 x 14	
	1.3:1	15-1/4 x 17	15 x 15	16-1/4 x 13	
200 HP	1.6:1	17 x 19	17 x 16	17 x 12	
	1.3:1	15-1/4 x 18	16 x 16	16-1/4 x 14	
225 HP	1.6:1	17 x 20	17 x 19	17 x 15	
	1.3:1	15-1/4 x 18	16 x 16	17 x 12	
250-260 HP	1.6:1	17 x 19	17 x 16	17 x 15	
	1.32:1	15-1/4 x 18	15-1/4 x 17	17 x 13	
290-300 HP	1.6:1	17 x 18	17 x 16	17 x 16	
	1.32:1	15-1/4 x 19	15-1/4 x 18	17 x 14	
	1.6:1	17 x 19	17 x 17	17 x 17	
LH Part No.	RH Part No.	Dia. & Pitch	Blds.	Metal	Price
SMC-737 072091	SMC-721 072090	15-1/4 x 17	3	Alum.	\$225
SMC-765 072101		16 x 16	3	Alum.	\$253
SMC-736 072089	SMC-720 072088	16 x 15	3	Alum.	\$225
SMC-744 072097	SMC-760 072096	17 x 19	3	Alum.	\$253
SMC-750 072099	SMC-751 072098	17 x 17	3	Alum.	\$253
	SMC-769 072104	17 x 16	3	Alum.	\$253
	SMC-774 072106	17 x 12	3	Alum.	\$253
SMC-803 032105	SMC-802 032106	16 x 25	3	Alum.	\$225
SMC-805 032107	SMC-804 032108	16-3/8 x 23	3	Alum.	\$225
SMC-807 032109		16-3/4 x 21	3	Alum.	\$225
	SMC-808 072112	16-3/4 x 19	3	Alum.	\$225

BMW MODEL G-130-S, G-190-S, G-220-S (THRU 1982)

HP Range: 130-190-220 HP. Recom.(For twin installations increase pitch 2")

Approx. HP	Drive Ratio	Boat Length				
		Thru 17'	18'-21'	22'-25'		
130 HP	2.2:1	14 x 19	14 x 17	14 x 15		
190 HP	1.95:1	14 x 21	14 x 19	14 x 17		
220 HP	1.95:1	14 x 23	14 x 21	14 x 19		
LH Part No.	Dia & Pitch	Blds.	Metal	RH Part No.	LH Part No.	Price
SMC350	14 x 23	3	Alum.	082053		\$129
SMC351	14 x 23	3	Alum.		082036	\$129

Weekends last longer when you carry a spare propeller. Leisure time on your boat is too precious to risk wasting with a broken prop. You should always carry a spare Michigan prop and a prop wrench on board your boat.

VOLVO-PENTA AQUAMATIC 200, 250, 270, 275, 280, 290, SP

STERNDRIVE

VOLVO-PENTA 80, 100; EATON MODEL A; MUNCIE 300, 500, 501; PERKINS Z; ENFIELD TRANSA-DRIVE (SPLINED SHAFT 13/16" DIA.)

HP Range: 110 to 290. (For twin installations increase pitch 2")					
Approx. HP	Drive Ratio	Boat Length			Houseboats, Barges
		Thru 17'	18'-21'	22'-25'	
110-145 HP	1.35:1	13 x 13	13 x 12		
	1.62:1	14 x 17	14 x 16	14 x 15	15 x 12
	2.15:1	14 x 19	14 x 18	14 x 17	15 x 14
150-185 HP	1.35:1	14 x 17	14 x 16	15 x 12	15 x 10
	1.61:1	14 x 21	14 x 19	15 x 16	15 x 14
	1.89:1	14 x 19	14 x 17	15 x 14	15 x 12
190-225 HP	1.35:1	14 x 21	15 x 19	15 x 17	
	1.61:1	14-3/8 x 21	16 x 18	16 x 16	16 x 13
230-260 HP	1.61:1	14 x 25	14 x 23	15 x 21	
290 HP	1.61:1	14 x 25	14 x 23	14 x 21	

LH Rot. Part No.	Volvo Equiv.	RH Rot. Part No.	Volvo Equiv.	Dia & Pitch	Blds.	Mt'l.	Price
Long Hub Propellers							
**t082001	854285-4	**t082002	854286-2	14 x 17	3	Al.	\$138
		**t084006		14 x 17	3	S.S.	\$368
**t082003	854288-8	**t082004	854289-6	14 x 19	3	Al.	\$138
		**t084008		14 x 19	3	S.S.	\$368
**t082009	851138-8	**t082010	851139-6	14 x 21	3	Al.	\$138
**t082011	851124-8	**t082012	851125-5	15 x 17	3	Al.	\$139
**t082013	850864-0	**t082014	850865-7	15 x 19	3	Al.	\$139
**t082015	850866-5	**t082016	850867-3	15 x 21	3	Al.	\$139
** 082089	851035-6	** 082088	851036-4	16 x 13	3	Al.	\$140
** 082091	851037-2	** 082090	851038-0	16 x 15	3	Al.	\$140
** 082093	851039-8	** 082092	851040-6	16 x 17	3	Al.	\$140
tSSV171C	** 083001 852086-8	tSSV172C	** 083002 852155-1	15 1/4 x 17	3	S.S.	\$372
tSSV191C	** 083003 852085-0	tSSV192C	** 083004 852138-7	15 x 19	3	S.S.	\$372
tSSV211C	** 083005 852087-6	tSSV212C	** 083006 852137-9	14 1/2 x 21	3	S.S.	\$372

Standard Hub Propellers							
SMC556	***082081	813282-1	SMC566	***082080	813283-9	14 x 12	3 Al. \$125
SMC570	***082083	813286-2	SMC530	***082082	813287-0	14 x 14	3 Al. \$125
SMC338	***082025	814626-8	SMC339	***082026	814631-8	14 x 15	3 Al. \$129
SMC342	***082027	814627-6	SMC343	***082028	814632-6	14 x 17	3 Al. \$129
SMC346	***082031	854147-6	SMC347	***082032	854146-8	14 x 19	3 Al. \$129
SMC348	***082033	814629-2	SMC349	***082034	814634-2	14 x 21	3 Al. \$129
SMC350	***082053	839569-1	SMC351	***082036	839570-9	14 x 23	3 Al. \$129
PR248	***082061		PR250	***082062		14 3/8 x 23	3 Al. \$125
PR256	***082063					14 3/8 x 25	3 Al. \$125
PR260	***082065					14 3/8 x 27	3 Al. \$125
SMC592	***082085	813296-1	SMC582	***082084	813297-9	15 x 11	3 Al. \$127
SMC606	***082087	813316-7	SMC604	***082086	813317-5	15 x 13	3 Al. \$127
SMC340	***082059	814611-0	SMC341	***082060	814615-1	15 x 15	3 Al. \$129
SMC344	***082029	854149-2	SMC345	***082030	854148-4	15 x 17	3 Al. \$129
SMC293	***082021		SMC292	***082022		15 x 19	3 Al. \$129
SMC295	***082023		SMC294	***082024		15 x 21	3 Al. \$129
PR397	***082069		PR396	***082068		16 x 13	3 AL. \$132
PR401	***082071		PR400	***082070		16 x 15	3 Al. \$132
PR405	***082073		PR404	***082072		16 x 17	3 Al. \$132
PR409	***082075		PR408	***082074		16 x 19	3 Al. \$132
PR413	***082077					16 x 21	3 Al. \$132
PR417	***082079		PR416	***082078		16 x 23	3 Al. \$132

NOTE: Bushings for above alum. props suggested for max. 240 HP unless marked with a t.

***Standard Hub propeller installations from outdrive serial #PZ2877179, require a propeller cone #850785-7, spacer ring #851261-8, washer #850889-9 and allen bolt #850889-7 (prior serial number outdrives require an additional washer #897367-9). Standard Hub propellers are not for use with V-6 or 40 diesel engines.

** Long Hub propellers for use with model "275," "280," and "290" outdrives only. Long Hub propellers are for use with "275," "280," and "290" outdrives and late production "270" outdrives which have drilled propeller shaft. LONG HUB and STAINLESS STEEL propeller installations require a propeller cone #850785-7, washer #850888-9 and allen bolt #850889-7.

Attaching hardware available thru Michigan Distributors or Volvo Distributors. Note: Michigan Part No. 082001 and 082002 are Long Hub, Volvo Equiv. is Short Hub.

+Will not fit a 270 Stern Drive.

For SSV Series: 1. Designed for boats with power to weight ratios of 12:1 and below. 2. Boats must have power trim. 3. Anti-cavitation plate height 1" above boat bottom. 4. Blades cambered must run in ventilated condition. 5. Use 2" less pitch if current aluminum prop is cupped, 3" less if uncupped.

HP Range: 80 to 155. Recom. (For twin installations increase pitch 2")							
Approx. HP	Drive Ratio	Boat Length			Houseboats, Barges		
		Thru 17'	18'-21'	22'-25'			
80-110 HP	1.1:1	12-1/2 x 13	12-1/2 x 11				
	1.5:1	14 x 14	14 x 12	14 x 11	14 x 9		
	1.8:1	14 x 16	14 x 14	14 x 12	14 x 9		
140-155 HP	1.1:1	12-1/2 x 15	12-1/2 x 13	12-1/2 x 11			
	1.5:1	14 x 16	14 x 14	14 x 12	14 x 9		
	1.8:1	14 x 18	14 x 16	14 x 14	14 x 12		
	Volvo Equiv.	Dia & Pitch	Blds.	Metal	Price	Michigan Part No.	
SMC885	804446	12-1/2 x 15	3	Alum.	\$110	082035	
SMC900		14 x 16	3	Alum.	\$151	082041	
SMC898	806603	14 x 14	3	Alum.	\$151	082037	
SMC906	806601	14 x 12	3	Alum.	\$151	082043	

VOLVO-PENTA 100-110; EATON MODEL B; (PIN DRIVE)

HP Range: 110 to 150. Recom. (For twin installations increase pitch 2")							
Drive Ratio	Boat Length			Houseboats, Barges			
	Thru 17'	18'-21'	22'-25'				
1.26:1	13 x 15	14 x 12	14 x 10	14 x 9			
1.47:1	14 x 16	14 x 14	14 x 13	14 x 12			
1.5:1	14 x 16	14 x 14	14 x 13	14 x 12			
LH Part No.	Volvo Equiv.	RH Part No.	RH Volvo Equiv.	Dia & Pitch	Mtl	Price	
		SMC944	082054	14 x 16	Al.	\$151	
SMC925	082049	809862	SMC940	082052	813241	14 x 14	Al. \$151
SMC922	082047	813229				14 x 13	Al. \$151
SMC921	082045	813228				14 x 12	Al. \$151
SMC980	082057	813226				14 x 10	Al. \$151

Michigan Wheel gives you unmatched selection and variety.

One stop shopping for most outboard and sterndrive units still in existence thru an international network of distributors.

**MICHIGAN WHEEL
CORPORATION**

1501 Buchanan Ave., S.W.
Grand Rapids, MI 49507-1697
Telex: 6877077 MIMOT UW
Phone: (616) 452-6941
Fax: (616) 247-0227

August 1, 1991

