

# The ANTIQUE OUTBOARD



Dick Jones, first place winner of the Texas Nationals receives a marine speedometer from Jaynie Brannigan, Queen of the Great Race and the Knuckle Buster Cup from Val Valentine of Valentine Marine Supply.

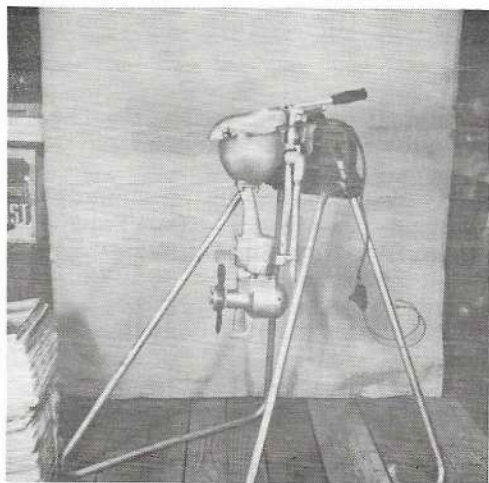
VOLUME 2

NUMBER 4

OCTOBER, 1967

## The Antique Outboard Motor Club

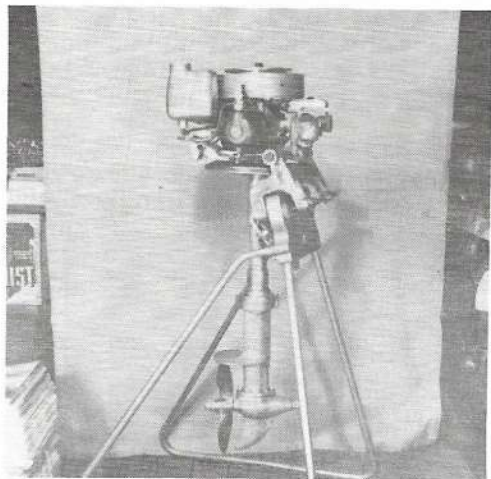
# From The Weidman Collection



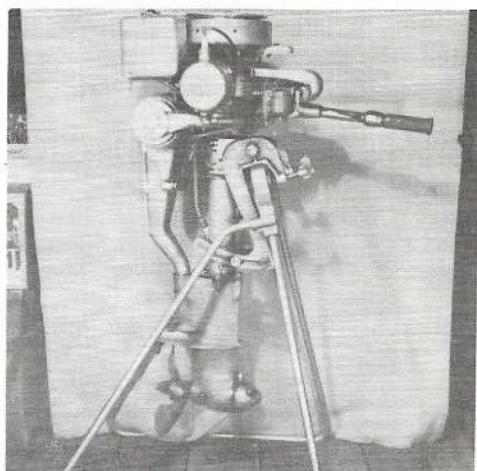
1939 CLARKE TROLLER  
1.2 H.P. SINGLE CYLINDER  
VARIABLE PITCH PROPELLER  
BATTERY IGNITION; WEIGHT 9 LBS.



1930 EVINRUDE FOLD LITE TWIN  
LOWER UNIT FOLDS UP INTO RECESS  
OF DIVIDED MUFFLER FOR EASE OF  
CARRYING AND STORAGE.



1932 MUNCIE (NEPTUNE) TWIN.  
MOTOR MOUNTS SOLID ON BOAT,  
DRIVE SHAFT HOUSING AND LOWER  
UNIT ROTATES 360 DEGREES. A  
TILLER CORD CIRCLES THE BOAT  
AND THE WHEEL UNDER THE MUFFLER  
FOR STEERING.



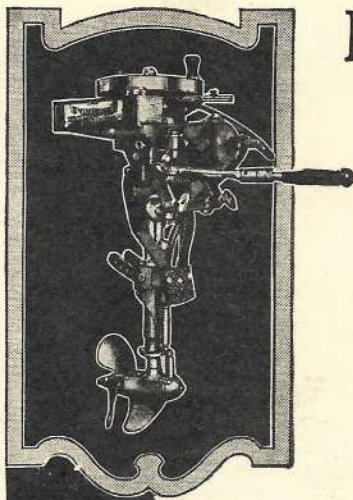
1930 INDIAN, SILVER ARROW  
20 CUBIC INCH TWIN.

# The Antique Outboard Motor Club

1107 PUEBLO, RICHARDSON, TEXAS 75080

PRINTED IN U.S.A.

Printed Matter  
No Commercial Value



## Exploring—1922 Style!

Prospecting strange waterways—seeking new fishing grounds and camping places—seasons at the waterside offer scores of added joys when there is an Evinrude in the family.

Just a twirl of the flywheel and away you go. Swiftly, too, for only heavy, built-in engines equal Evinrude's famous power and speed.

Two Evinrude models—the Standard, for rugged, year 'round service; or the sportsman's Lightweight, weighing only 50 pounds complete—are on display at your sporting goods and hardware dealers.

*See them, or write for free catalog describing the Built-in-Flywheel Magneto, Tilt-up Attachment and other Evinrude features.*

### EVINRUDE MOTOR CO.

679 Evinrude Bldg.

Milwaukee, Wis.

Distributors:  
69 Cortlandt St., New York, N. Y. 440 Market St., San Francisco, Calif.  
780 Commonwealth Ave., Boston, Mass. 211 Morrison St., Portland, Ore.

**EVINRUDE** Standard and  
Lightweight  
DETACHABLE MOTORS FOR WATERCRAFT



Evinrude Outings No. 3—Hunting the wild water lily