

APRIL, 1930

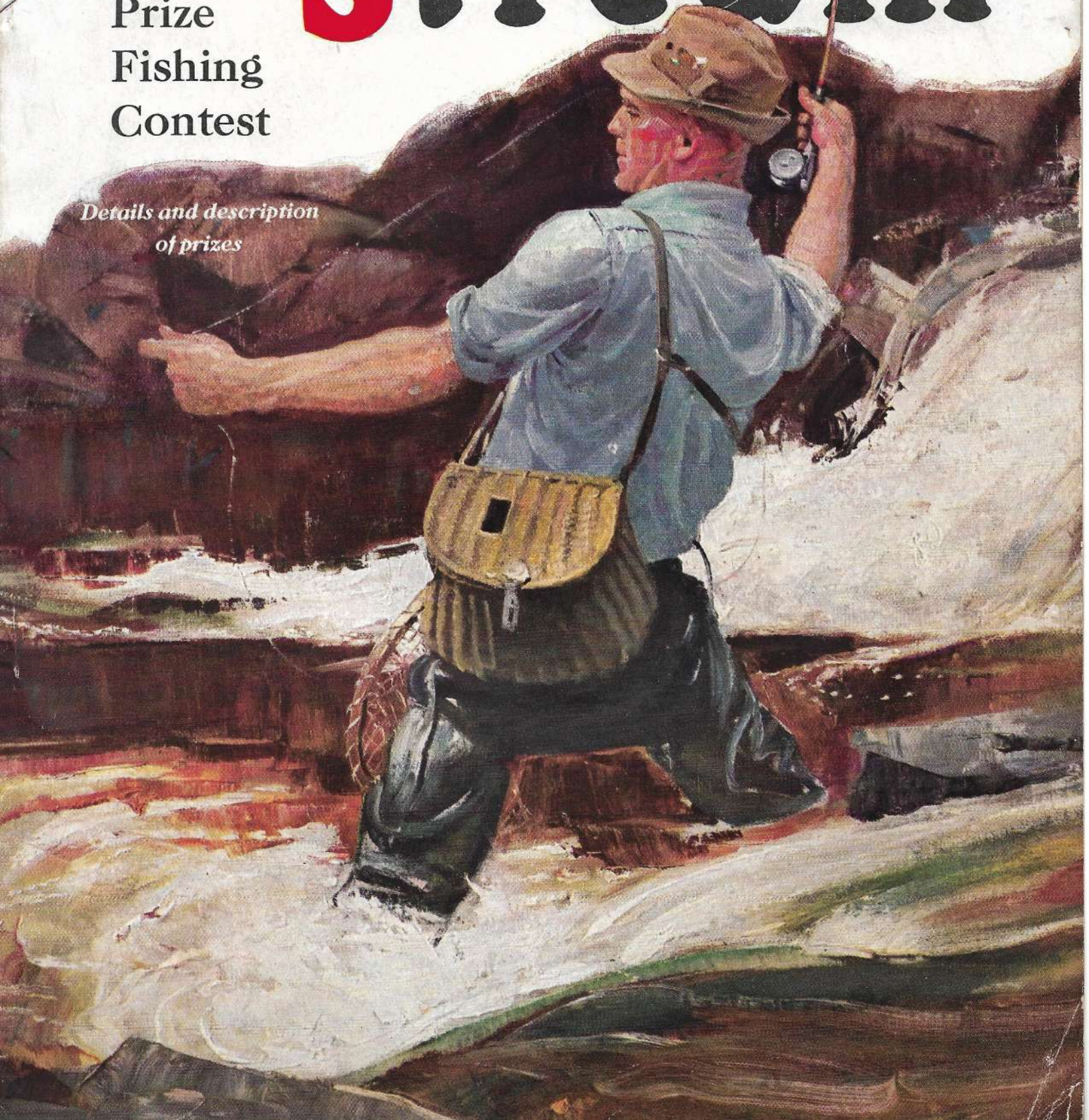
25 CENTS

★ **F**ield & **S**tream

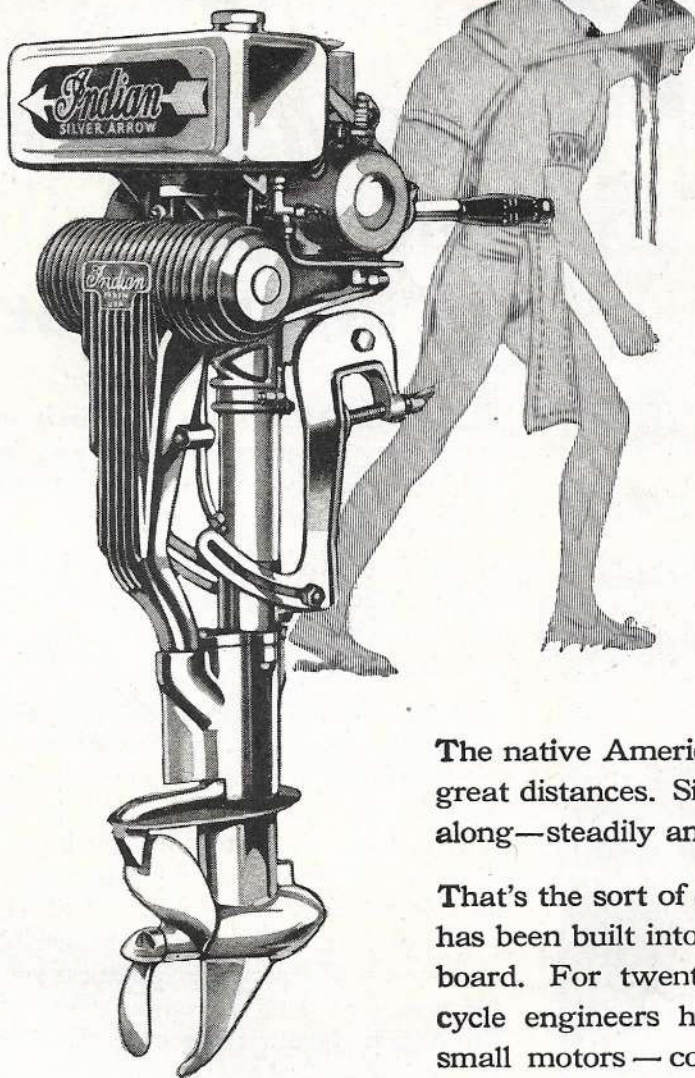
*America's
Magazine
for the
Outdoorsman*

Prize
Fishing
Contest

*Details and description
of prizes*



POWER



The native American Indian carried heavy loads great distances. Silently, rapidly, he would push along—steadily and untiringly.

That's the sort of dogged, unfailing power that has been built into the Indian Silver Arrow Outboard. For twenty-seven years Indian Motorcycle engineers have been building successful small motors—compact, powerful engines for the gruelling duties demanded of a motorcycle. Indian Motorcycles hold all records for endurance. Endurance—dependable power—is what you want in an outboard motor. See this remarkable power plant before you buy any motor.

Descriptive literature and dealers' names sent on request. Convenient service stations everywhere.

SPECIFICATIONS

Motor—High speed twin cylinder, two-stroke, three-port type. Bore $2\frac{1}{2}$ " stroke 2". Piston displacement 19.63 cu. ins. Motor speed 4500 R.P.M. Gear reduction to propeller 100 to 60.

Cylinders—Exclusive Indian Silver Arrow cast iron cylinder sleeves. Cylinder heads and water jackets of heat treated aluminum alloy. Hot Head Motor design.

Connecting Rods—Carefully balanced phosphor bronze; extra large bearings on crankshaft and piston wrist pin.

Pistons—Special Indian aluminum alloy fitted with two piston rings, designed for maximum performance with Indian Hot Head cylinder.

Crankshaft—Nickel steel forging, balanced. Hardened and ground to mirror finish. Main bearings $15/16$ " dia.; $2\frac{1}{2}$ " long. Crankshaft bearings, $15/16$ " dia.; $1\frac{3}{16}$ " long.

Ignition—Waterproof high tension Bosch flywheel magneto with cut-out button.

Carburetor—Tillotson automobile type; Indian handle grip control.

Cooling System—Indian pressure type with visible outlets. No pump or valves used with this system.

Underwater Exhaust—One-piece silencer, constructed of silicon aluminum alloy. Fitted with heat dissipating fins and cut-out.

Propeller Shaft—Stainless steel, heat treated, ground; runs on bronze and ball bearings.

Gears—Heat treated alloy steel. Pinions, twelve teeth; gears, twenty teeth.

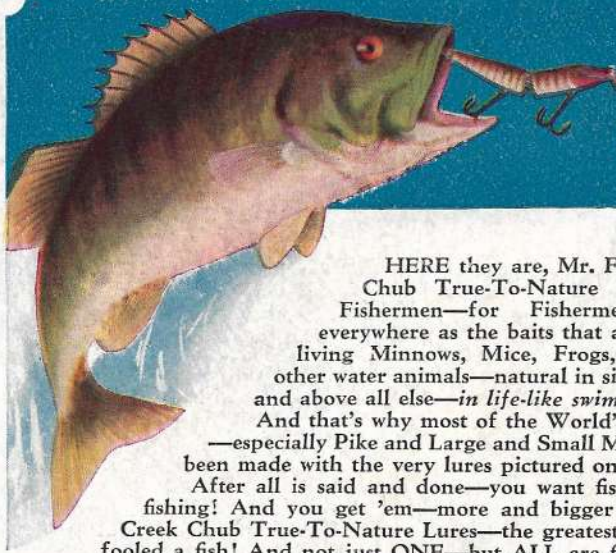
Price \$185.00

F. O. B. Springfield, Mass.



OUTBOARD MOTOR

INDIAN MOTORCYCLE CO. DEPT. F, SPRINGFIELD, MASS.



FOR BASS, PIKE OR MUSKIE CREEK CHUB TRUE-TO-NATURE LURES

HERE they are, Mr. Fisherman—Creek Chub True-To-Nature Lures—made by Fishermen—for Fishermen—and known everywhere as the baits that actually represent living Minnows, Mice, Frogs, Crawdads, and other water animals—natural in size, shape, color—and above all else—in life-like swimming movement! And that's why most of the World's Record Catches—especially Pike and Large and Small Mouth Bass—have been made with the very lures pictured on this page!

After all is said and done—you want fish—when you go fishing! And you get 'em—more and bigger fish—with these Creek Chub True-To-Nature Lures—the greatest killers that ever fooled a fish! And not just ONE—but ALL are fish getters!

THE FAMOUS PIKIE MINNOW

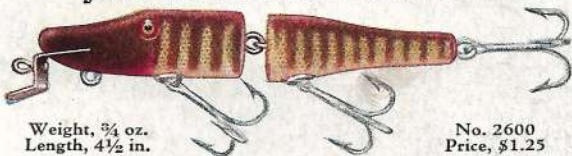


Weight, 3/4 oz.
Length, 4 1/2 in.

No. 700
Price, \$1.00

The greatest all around lure made—for salt water or fresh! It represents a natural Pike Minnow in size, shape, color and natural swimming movement! By all means, don't go to Canada or the northern waters without a supply of Pikes! Get a few with the new Silver Flash Finish No. 718. It's also a killer.

JOINTED PIKIE MINNOW



Weight, 3/4 oz.
Length, 4 1/2 in.

No. 2600
Price, \$1.25

If the water is a bit cloudy use the Jointed Pike Minnow No. 2618, Silver Flash Finish! And with its unusually lively action this lure closely resembles a silver side minnow—making it very attractive in cloudy water! And a fish getting wonder!

CRIPPLED MINNOW

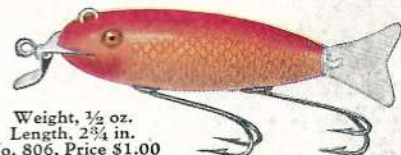


Weight, 3/4 oz.
Length, 3 3/4 in.

No. 1505
Price, \$1.00

By retrieving in slow, short jerks, this Bass getting wonder represents an injured minnow—lying on its side—but able to make a little fuss on the surface! With this lure, you get more of a thrill because you can both see and hear the strikes! Also made in Silver Flash Finish No. 1518.

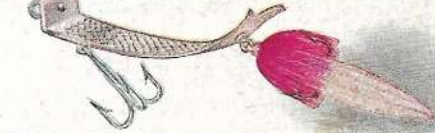
DE LUXE WAGTAIL



Weight, 1/2 oz.
Length, 2 3/4 in.
No. 806, Price \$1.00

Looks and swims like a natural, live minnow! The flash of the nicked tail swinging back and forth makes it mighty attractive—and a real fish getter! Double hooks can be turned up, making it weedless! Splendid lure for stream fishing, too!

WICKED WIGGLER

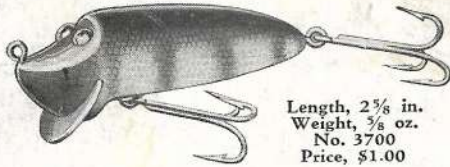


Weight 3/4 oz.
Length of body 2 1/4 inches
No. S-1—Price, \$1.00

The only spoon that does not revolve—and how it wiggles! Fast, flashy and a wicked hooker! Fast reeling makes it come to the surface. Wiggles a pork rind something awful. Bass, Pike and Pickerel eat it up!

ALSO—BLACK FINISH FOR EACH BAIT!

Every Creek Chub lure is a proven fish getter! Get them at your nearest dealer or direct. Our beautiful new colored catalog sent FREE upon request! If you get some good fish pictures—send 'em in!



THE NEW "RIVER RUSTLER"

Length, 2 5/8 in.
Weight, 3/8 oz.
No. 3700
Price, \$1.00

Just picture yourself out in a boat, Mr. Fisherman—with this snooty, impudent, little life-like lure out on the end of your line—swimming saucily along, with its peculiar erratic side to side dart—and continuous wiggle. With very little imagination, you can really see and feel those big fish lunge for it. And Man, how mad it makes 'em—so they strike it viciously—to kill it!

The New River Rustler is a proven "sure fire" fish getter—in rivers, as well as lakes! Its small, light, compact shape makes it an easy caster! Runs just deep enough to miss the weeds—and mighty effective along the shore! Ask for it at your dealers!



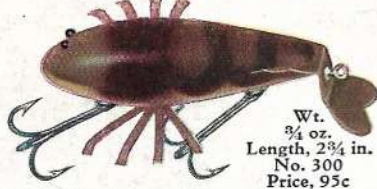
"LUCKY MOUSE"

Series No. 3600
Weight 3/8 oz.
Price \$1.00

Length 2 1/2 ins.

Positively the most life-like imitation of a swimming mouse ever produced; in size, appearance and action; strictly a top-water lure. Slow reeling gives it every appearance of a mouse and when retrieved at a moderately fast speed, produces a churning effect in the water due to a vacuum spray being produced by water striking the ears. By elevating the rod tip and twitching the lure along, it gives the effect of a small mouse frantically struggling to rise from the surface. A most wonderful bait for bass. A very popular bait for night fishing. Guaranteed a Killer.

THE CRAWDAD



Wt. 3/4 oz.
Length, 2 3/4 in.
No. 300
Price, 95c

Natural in shape and moves backwards with wiggle mostly in tail! Floats until started! A splendid deep running lure for trolling! Also casts like a bullet! No other lure like it!

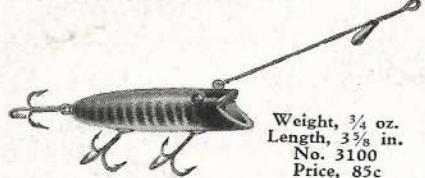
WEED FROG



Weight, 3/4 oz.
Length, 2 in.
No. 2819
Price, \$1.00

Absolutely weedless! It goes back into the weeds and pads and comes out splashing and skimming along—with the fish! A splendid lure for dark nights, too!

THE CASTROLA



Weight, 3/4 oz.
Length, 3 3/8 in.
No. 3100
Price, 85c

Representing a live minnow chasing a fly—up and down—and sideways—the Castrola has the most erratic, puzzling, teasing motion ever built into a lure! For a whale of a thrill, cast up alongside of lily pads or reeds, reel fast—then slow—and the antics this baby cuts up will tease any sly old Bass into an Excited rush and fierce strike! And it's a sure hooker!



THE CREEK CHUB BAIT CO.

134 SOUTH RANDOLPH STREET, GARRETT, INDIANA

Manufactured in Canada by Allcock, Laight & Westwood
Toronto, Ont.