

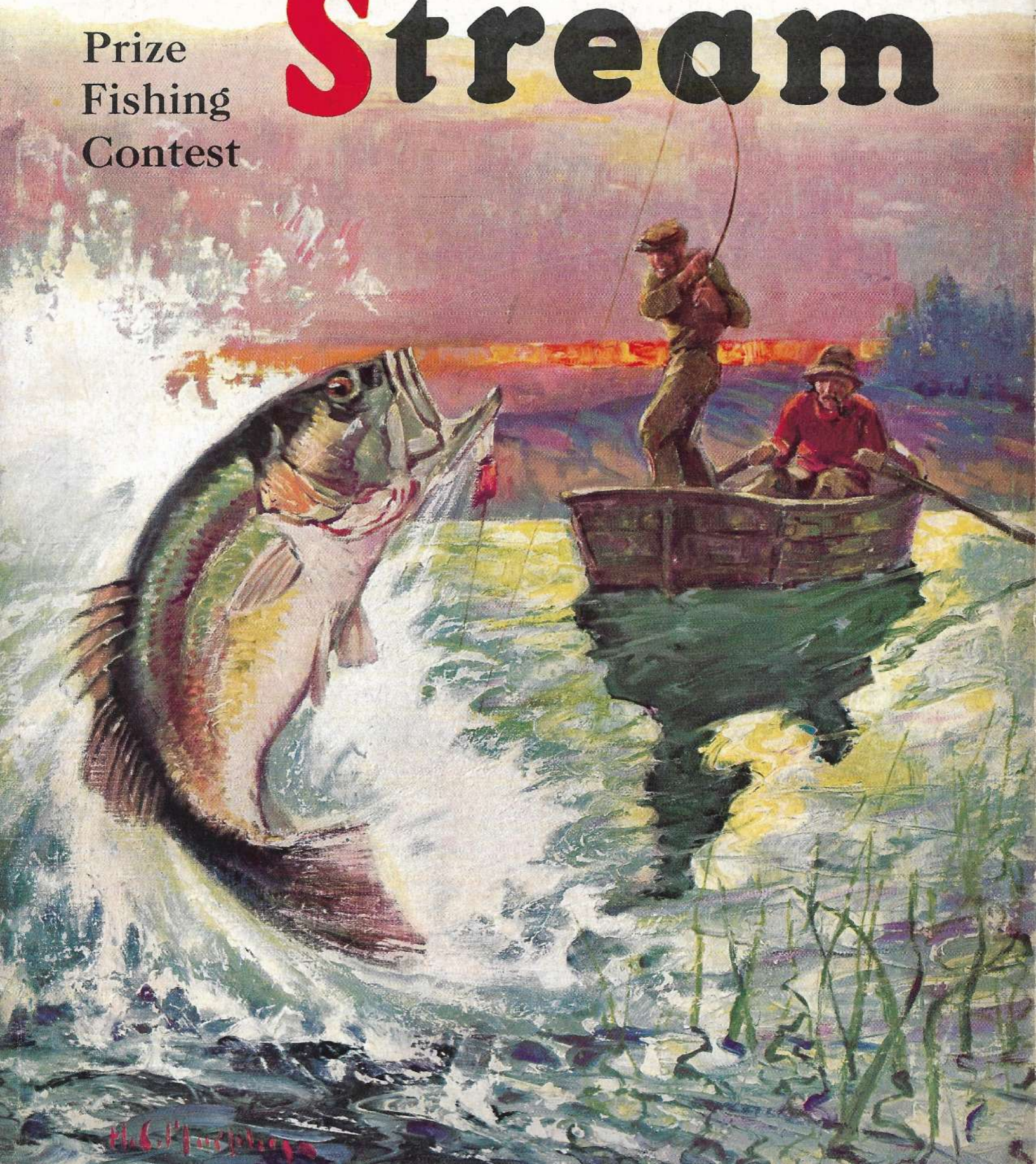
MAY, 1930

25 CENTS

# ★ **Field &** **Stream**

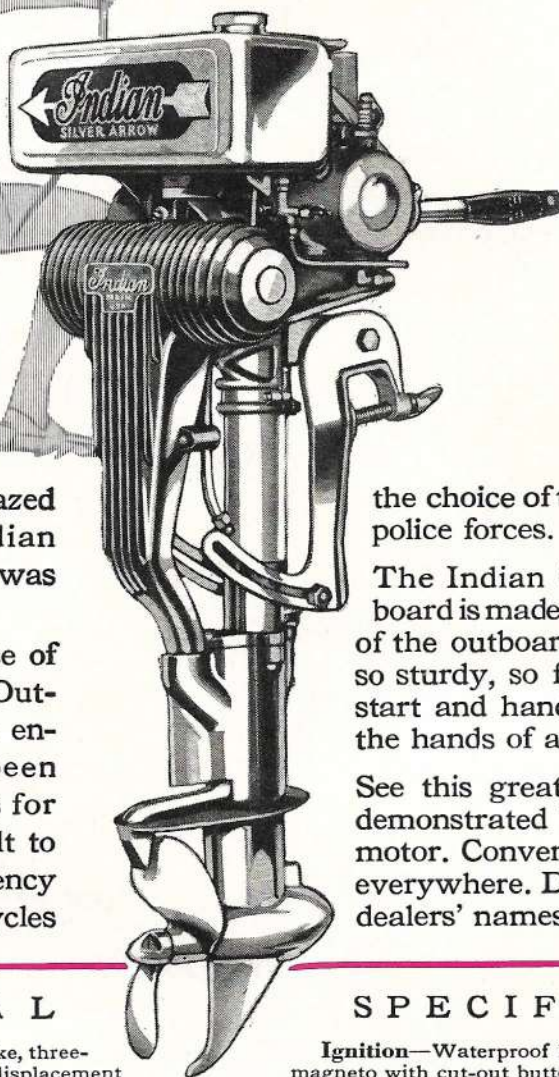
*America's  
Magazine  
for the  
Outdoorsman*

Prize  
Fishing  
Contest



H. G. Purpura

# S P E E D



**T**HE white man was amazed by the speed of the Indian arrow. Its swift, steady flight was a revelation.

So, too, is the swift, steady pace of the new Indian Silver Arrow Outboard. It is designed by the engineering ability that has been building Indian Motorcycles for twenty-seven years. It is built to perform with the same efficiency that has made Indian Motorcycles

the choice of the country's largest police forces.

The Indian Silver Arrow Outboard is made to meet the demands of the outboard enthusiast, yet, is so sturdy, so foolproof, so easy to start and handle that it is safe in the hands of a child.

See this great motor . . . have it demonstrated before you buy any motor. Convenient service stations everywhere. Descriptive folder and dealers' names on request.

## M E C H A N I C A L

**Motor**—High speed twin-cylinder, two-stroke, three-port type. Bore  $2\frac{1}{2}$ " , stroke 2". Piston displacement 19.63 cu. in. Motor speed 4500 R.P.M. Gear reduction to propeller 100 to 60.

**Cylinders**—Exclusive *Indian Silver Arrow* cast iron cylinder sleeves. Cylinder heads and water jackets of heat treated aluminum alloy. Hot Head Motor design.

**Connecting Rods**—Carefully balanced phosphor bronze; extra large bearings on crankshaft and piston wrist pin.

**Pistons**—Special *Indian* aluminum alloy fitted with two piston rings, designed for maximum performance with *Indian Hot Head* cylinder.

**Crankshaft**—Nickel steel forging, balanced. Hardened and ground to mirror finish. Main bearings  $15/16$ " dia.;  $2\frac{1}{2}$ " long. Crankshaft bearings,  $15/16$ " dia.;  $1-3/16$ " long.

## S P E C I F I C A T I O N S

**Ignition**—Waterproof high tension Bosch flywheel magneto with cut-out button.

**Carburetor**—Tillotson automobile type; *Indian* handle grip control.

**Cooling System**—*Indian* pressure type with visible outlets. No pump or valves used with this system.

**Underwater Exhaust**—One-piece silencer, constructed of silicon aluminum alloy. Fitted with heat dissipating fins and cut-out.

**Propeller Shaft**—Stainless steel, heat treated, ground; runs on bronze and ball bearings.

**Gears**—Heat treated alloy steel. Pinions, twelve teeth; gears, twenty teeth.



Price, \$185<sup>00</sup>

F. O. B. Springfield, Mass.

## OUTBOARD MOTOR

**INDIAN MOTORCYCLE CO. DEPT. F SPRINGFIELD, MASS.**

“It’s the Camel blend!”

The mild and fragrant blend  
of choice tobaccos makes  
the smoking of every Camel  
Cigarette a pure delight.



# Camel

the better cigarette