

BATTERIES

TACHOMETERS

FLUSHING ATTACHMENTS

OUTBOARD POWER TRIM KITS

ELECTRIC STARTER MOTOR KITS

HEAVY DUTY WATER PUMP KITS

AND

MISCELLANEOUS ITEMS

OWNER'S GUIDES

MODELS	PART NO.	MODELS	PART NO.
K1, K2 and K3	C-90-26084	Merc 100	C-90-29693
K4 and K5	C-90-26084	Merc 110	C-90-33856 (1962)
KB1, KB2, KB3, KD3 and KE3	C-90-26084		C-90-33856 (1963)
KB4, KB5 and KD4	C-90-26084		C-90-37814 (1964)
KF3	C-90-26084		C-90-37814 (1965)
KE7, KF7, KG7 and KG4	C-90-26084	Merc 110-5	C-90-52247
KF9	C-90-58058	Merc 110-6	C-90-53194
KG9	C-90-58058	Merc 110-7	C-90-53194 (1968)
Mark 5 and KF5	C-90-26084	Merc 110-8	C-90-53194 (1969)
Mark 6	C-90-25801	Merc 110-9	C-90-56376 (1970)
Mark 6A	C-90-28824	Merc 110 (Serial #2798057 and up)	C-90-58849 (1971)
Mark 7 and KE4	C-90-26084	Merc 110 (Serial #3263263 and up)	C-90-61539 (1972)
Mark 10	C-90-27091	Merc 150	C-90-29895
Mark 10A	N. L. A.	Merc 200	C-90-29692
Mark 15, Mark 20 and KH7	C-90-39419	Merc 200	C-90-33856 (1963)
Mark 15A	C-90-28785		C-90-37814 (1964)
Mark 20H	C-90-39419		C-90-37814 (1965)
Mark 30H	C-90-58058	Merc 200-3	C-90-52247
Mark 55H	C-90-58058		C-90-53194
Mark 25	C-90-39419	Merc 200-5	C-90-53194
Mark 28	C-90-28395	Merc 200-6	C-90-53194 (1969)
Mark 28A	C-90-28786	Merc 200-7	C-90-56376 (1970)
Mark 30	C-90-58058	Merc 200 (Serial #2827667 and up)	C-90-58849 (1971)
Mark 30-3	C-90-58058	Merc 200 (Serial #3226958 and up)	C-90-61539 (1972)
Mark 35A	N. L. A.	Merc 250	C-90-31795
Mark 40	C-90-58058	Merc 300	N. L. A.
Mark 50	N. L. A.	Merc 350	C-90-52247
Mark 55-1 and -2	C-90-58058	Merc 350 (2 cyl.)	C-90-33997 (1963)
Mark 55-3 and -4	C-90-58058		C-90-35693 (1964)
Mark 55A	C-90-58058	Merc 350-2 (2 cyl.)	C-90-37815 (1965)
Mark 58 and Mark 58A	N. L. A.	Merc 350-3-4 (2 cyl.)	C-90-39365 (1966)
Mark 75	C-90-26804		C-90-45927 (1967)
Mark 75A	C-90-26804	Merc 350-5 (2 cyl.)	C-90-53202 (1968)
Mark 78	N. L. A.	Merc 350-6 (2 cyl.)	C-90-53202 (1969)
Mark 78A	N. L. A.	Merc 400	C-90-30962 (1960)
			C-90-30962 (1961)
Merc 39	C-90-37814 (1964)	Merc 400 (2 cyl.)	C-90-57012 (1970)
	C-90-37814 (1965)		C-90-58850 (1971)
	C-90-52247	Merc 402	C-90-62850 (1972)
Merc 39-3	C-90-53194	Merc 450	C-90-32210
Merc 39-4	C-90-53194 (1968)	Merc 500 (Serial #1421113 to #1460498)	N. L. A.
Merc 40	C-90-53194 (1969)	Merc 500	N. L. A.
	C-90-56376 (1970)	Merc 500 (Jet-Prop)	C-90-32212 (1962)
	C-90-58849 (1971)		C-90-52247 (1962)
Merc 40 (Serial #3296137 and up)	C-90-61539 (1972)		C-90-52247 (1963)
Merc 60	C-90-33856 (1961)	Merc 500-3	C-90-52247 (1964)
	C-90-33856 (1962)	Merc 500-4	N. L. A.
	C-90-33856 (1963)		N. L. A.
	C-90-37814 (1964)	Merc 500-6	C-90-47857
	C-90-37814 (1965)	Merc 500-7	C-90-47857 (1968)
Merc 60-5	C-90-52247	Merc 500-8	C-90-56347 (1969)
	C-90-53194	Merc 500 (Serial #2858814 and up)	C-90-56347 (1970)
Merc 60-7	C-90-53194 (1968)		C-90-58850 (1971)
Merc 75	C-90-53194 (1969)		C-90-61537 (1972)
	C-90-56376 (1970)	Merc 600	C-90-29993
	C-90-58849 (1971)	Merc 650	C-90-52247 (1963)
Merc 75 (Serial #3274633 and up)	C-90-61539 (1972)		C-90-52247 (1964)

(CONTINUED ON PAGE 2G)

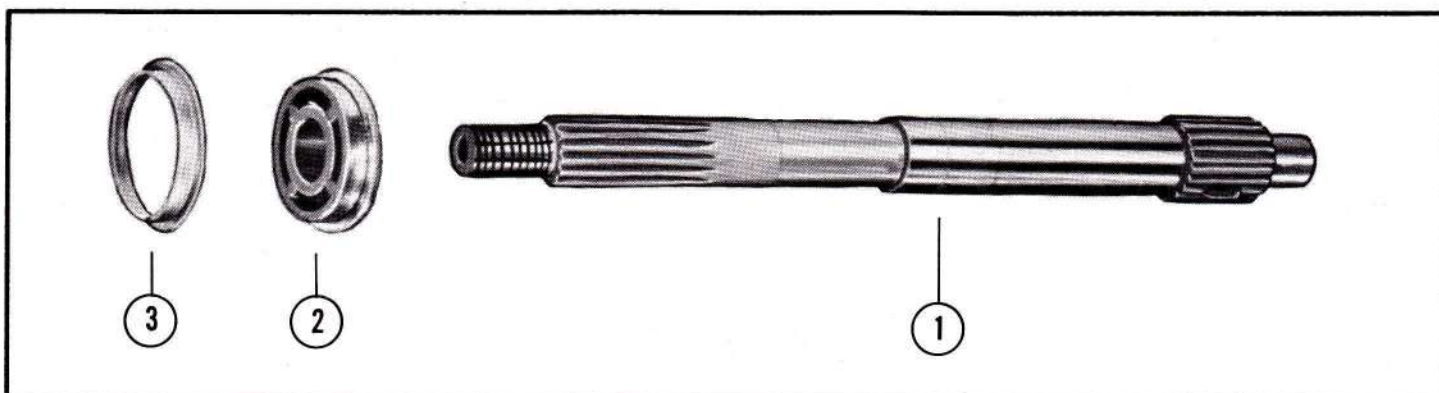
OWNER'S GUIDES

MODELS	PART NO.	MODELS	PART NO.
Merc 650-2	C-90-37993 (1965)	Merc 950-SS	C-90-45203 (1966)
	C-90-39364 (1966)	Merc 950-SS-1	C-90-52247
Merc 650-4	C-90-47857	Merc 1000	C-90-34418 (1962)
Merc 650-5	C-90-47857 (1968)		C-90-34418 (1963)
Merc 650-6	C-90-56347 (1969)		C-90-35844 (1964)
Merc 650 (Serial #2803562 and up)	C-90-56347 (1970)	Merc 1000-2	N. L. A.
	C-90-58850 (1971)	Merc 1000-SS	C-90-53015
Merc 650 (3-Cyl.)	C-90-61611 (1972)	Merc 1000-SS-1	C-90-53015 (1969)
Merc 700	N. L. A.	Merc 1100	C-90-39367 (1966)
Merc 700 (shift)	C-90-31064 (1961)	Merc 1100-SS	C-90-45203 (1966)
	C-90-32360 (1962)	Merc 1100-SS-1	C-90-52247
Merc 800	N. L. A.	Merc 1150	C-90-56363 (1970)
Merc 800 (shift)	C-90-30961 (1961)		C-90-58851 (1971)
Merc 800 (4 cyl.)	C-90-53195 (1969)	Merc 1150-SS	C-90-61610 (1972)
	C-90-56347 (1970)	Merc 1250-SS	C-90-53015
	C-90-58850 (1971)	Merc 1250-SS-1	C-90-53015 (1969)
	C-90-61537 (1972)	Merc 1350	C-90-56363 (1970)
Merc 850	C-90-32122 (1962)		C-90-58851 (1971)
	C-90-34418 (1963)	Merc 1400-SS	C-90-61610 (1972)
	C-90-35844 (1964)	Merc 1000BP (Super)	C-90-53015 (1969)
Merc 900	N. L. A.	Merc 1250BP (Super)	C-90-53015 (1969)
Merc 950	C-90-39367 (1966)		

MISCELLANEOUS

C-90-29048	Outboard Pocket Service Guide (motors prior 1965)
C-90-38929	Outboard Pocket Service Guide (motors for 1965 and 1966)
C-90-52544	Outboard Pocket Service Guide (motors for 1967 and 1968)
C-90-52339	Outboard Pocket Service Guide (motors for 1969)
C-90-59923	Outboard Pocket Service Guide (motors for 1970 and 1971)
C-90-25500	Master Service Manual with Soft Cover
C-90-25569	Hard Cover for Master Service Manual
C-90-24752	Outboard Parts Manual with Hard Cover
C-90-24753	Hard Cover for Outboard Parts Manual
C-90-24754	Insert, Outboard Parts Manual
C-90-39234	Easel
C-90-39866	Outboard Parts Manual Easel

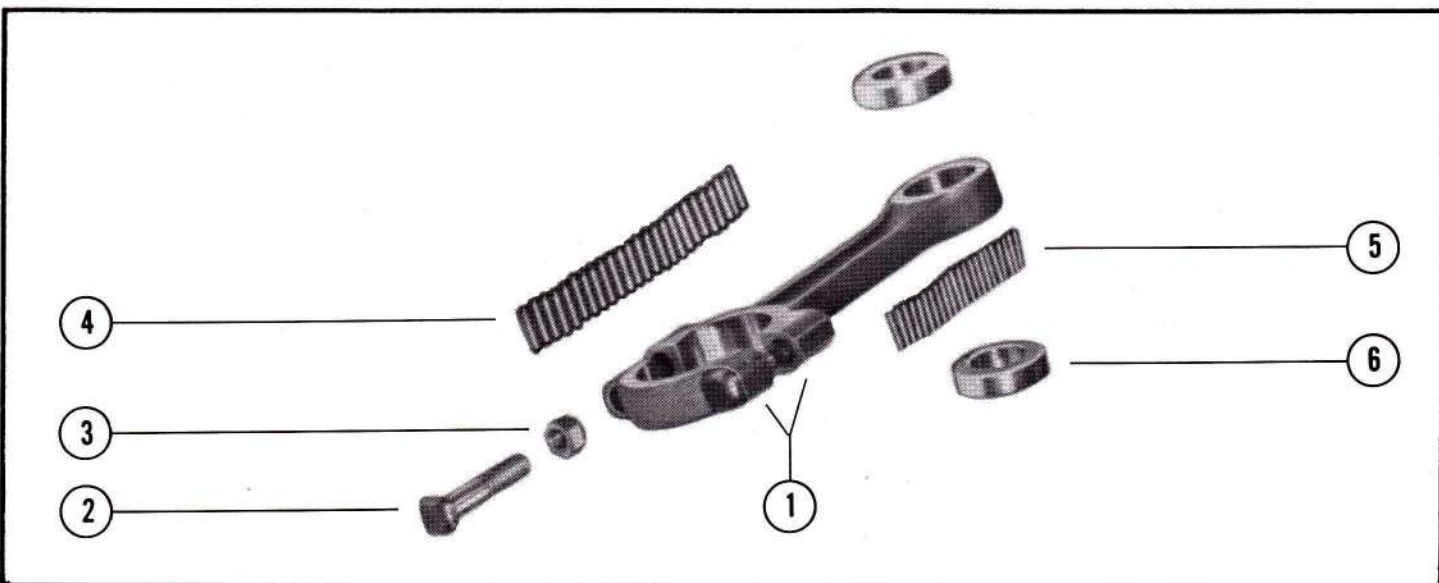
PROPELLER SHAFT ASSEMBLY



PART NO.	REF. NO.	DESCRIPTION	QUAN.
A-44-46966A1	1	Propeller Shaft Assembly <i>(see note below)</i>	1
A-46961A1	2	Thrust Hub Assembly	1
A-12-29590	3	Washer, cupped - thrust hub	1

NOTE: Use with all 6 cylinder gear shift models and Merc 650 which use hi-performance propellers.

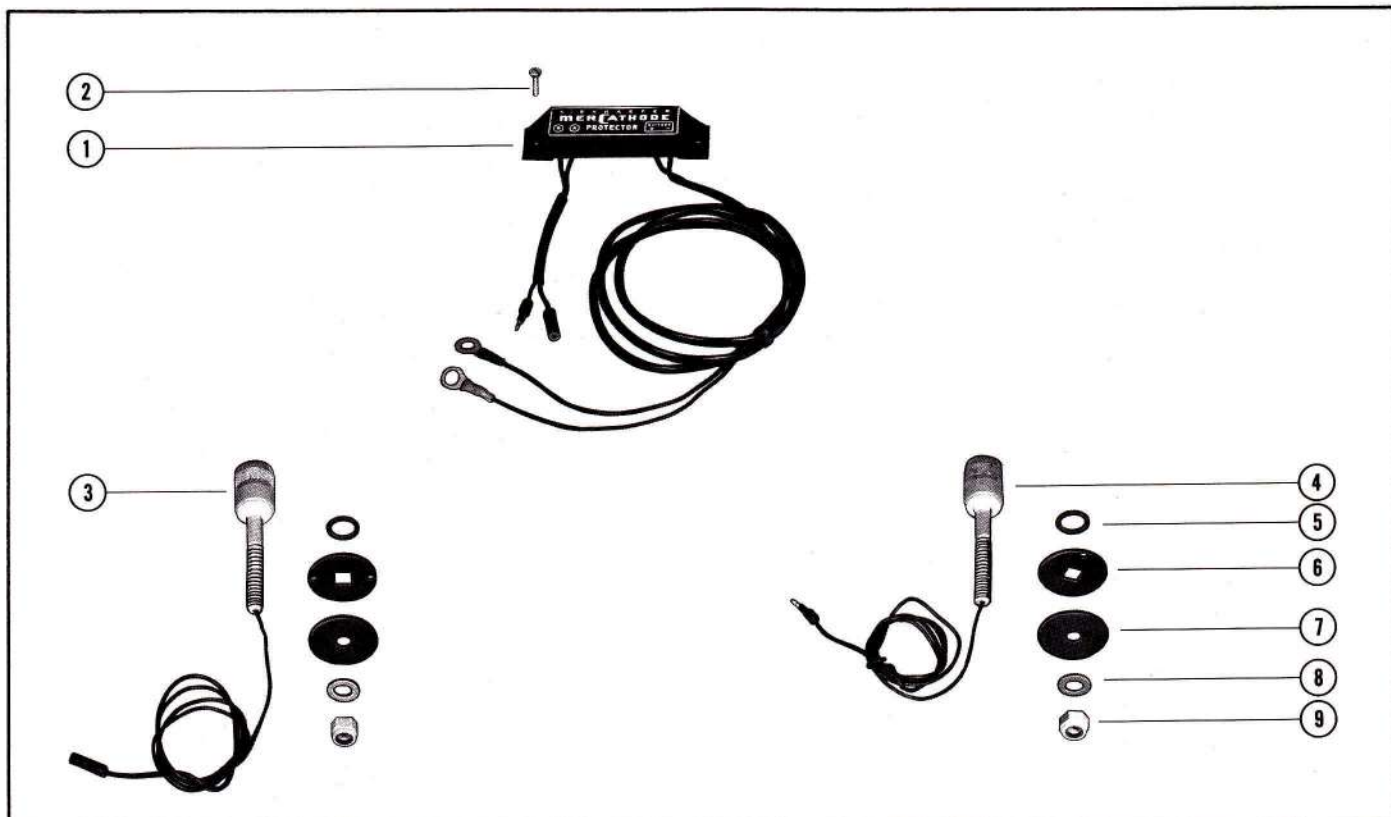
CONNECTING ROD ASSEMBLY



PART NO.	REF. NO.	DESCRIPTION	QUAN.
A-600-3292A1	1	Connecting Rod Assembly <i>(see note below)</i>	1
A-10-48031	2	Screw, connecting rod	2
A-11-20061	3	Nut, connecting	2
A-29-20046	4	Needle Bearing, crankpin	25
A-29-20063	5	Needle Bearing, piston pin	22
A-12-20064	6	Washer, needle	2

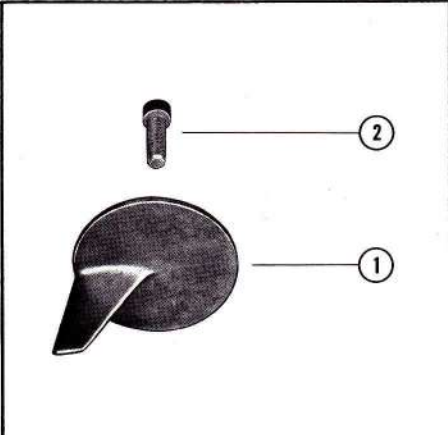
NOTE: Use with all engines which operate at a high R.P.M., which use the 600-7 series connecting rods.

MERCATHODE KIT



PART NO.	REF. NO.	DESCRIPTION	QUAN.
C-46733A1	-	MerCathode Kit	1
C-46195	1	Control, protector	1
C-10-33615	2	Screw, protector control to boat transom (1")	2
C-46194	3	Electrode, female fitting (stamped with letter "R")	1
C-46193	4	Anode, male fitting (stamped with letter "A")	1
C-12-32620	5	Washer, electrode and anode to boat transom	2
C-12-46713	6	Washer, electrode and anode to boat transom	2
C-27-46714	7	Gasket, electrode and anode to boat transom	2
C-12-21900	8	Washer, electrode and anode to boat transom	2
C-11-46719	9	Nut, mounting - electrode and anode to boat transom	2

TRIM TAB ASSEMBLY

	PART NO.	REF. NO.	DESCRIPTION	QUAN.
	A-46399A1	1	1	Trim Tab Assembly
C-10-31718	2	2	Screw, trim tab to gear hsg. (1 1/2")	1

TACHOMETER



4-cylinder engines . . . A-27707



6-cylinder engines . . . A-33550

BATTERY METER



C-58380A1

QUICKSILVER BATTERY



70 Amp. Hour Capacity

- C-52941 (with wing nut terminals)
- C-52942 (with tapered terminals)
- C-60164 (For Merc 200 and Snowmobile 150E)
- C-55316 (For Snowmobile 250E)

C-36-35654A1 Cap, vent

BATTERY BOX

C-32144



EMBLEMS

C-93-62438 Emblem (Cloth - Small)



C-93-62439 Emblem (Cloth - Large)

FLUSHING ATTACHMENTS

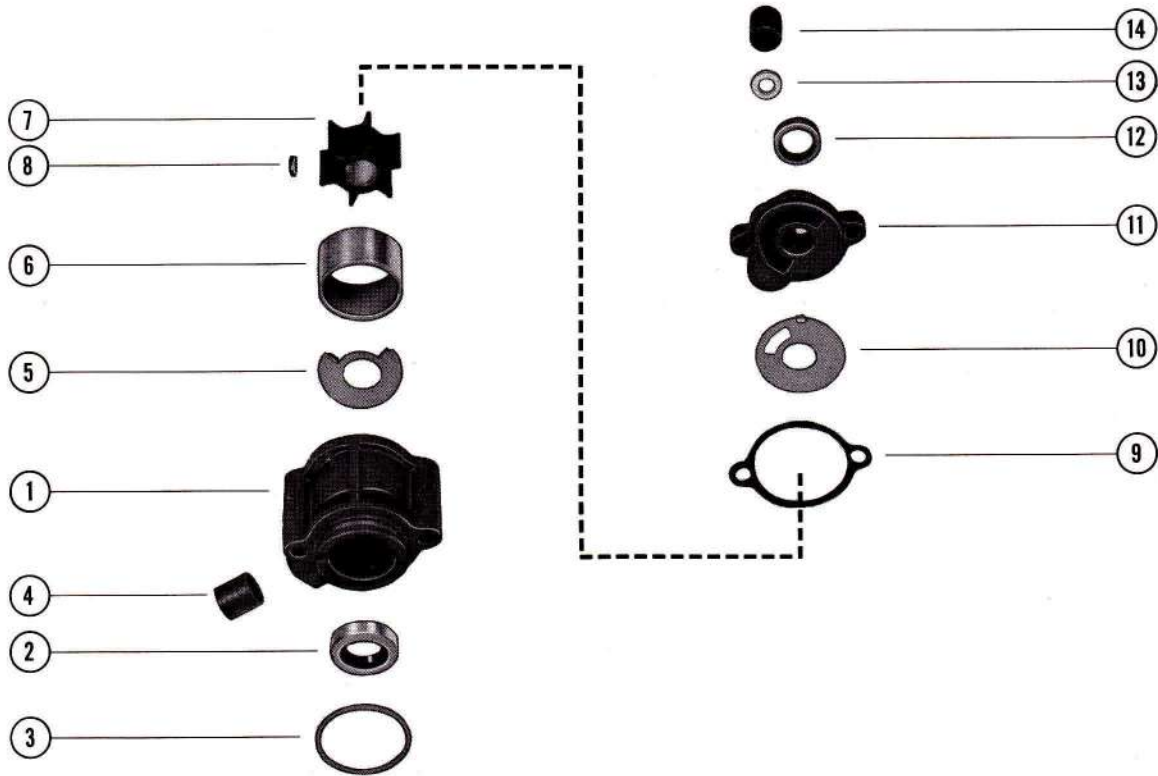


C-24789A1 (aluminum water pump)
C-48755A1 (plastic water pump)



C-55585 (use on Merc 400, 500, 650, 800, 1150 and 1350 "1970 and 1971")

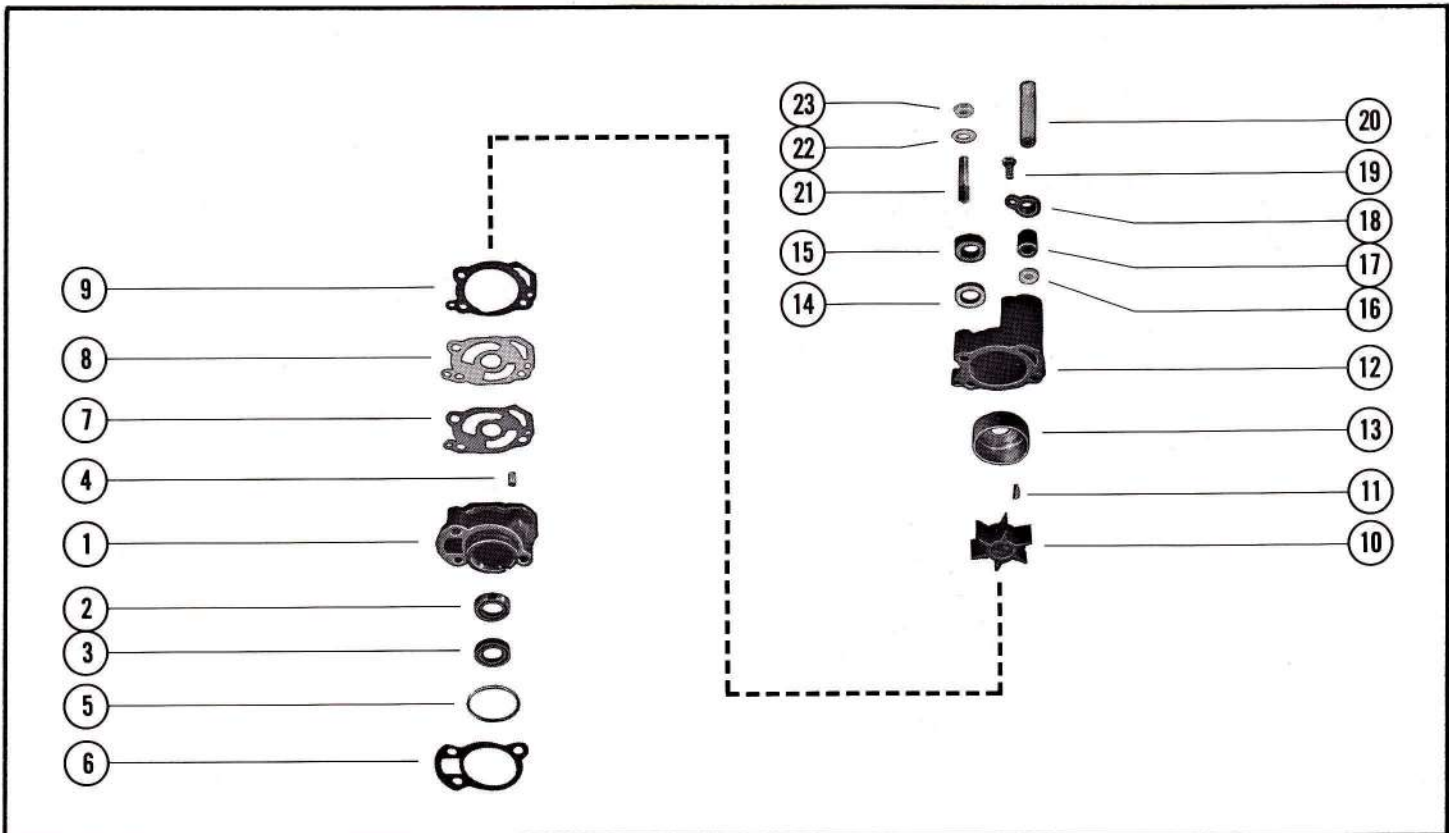
MERC 200 HEAVY DUTY WATER PUMP KIT



PART NO.	REF. NO.	DESCRIPTION	A-46-38971A2		A-46-45344A1	
A-46-38971A2	-	Heavy Duty Water Pump Kit (Serial #1558310 thru Serial #1972826)	1	-	-	-
A-46-45344A1	-	Heavy Duty Water Pump Kit (Serial #1972827 thru Serial #2432535)	-	-	1	-
A-46-38971A1	1	Water Pump Body Assembly	1	-	-	-
A-46-39294A3	1	Water Pump Body Assembly	-	-	-	1
A-26-33467	2	Oil Seal, water pump body	1	-	-	-
A-26-20070	2	Oil Seal, water pump body	-	-	-	1
C-25-33466	3	"O" Ring, water pump body	1	-	-	-
C-26-33613	4	Seal, rubber - water inlet tube	1	-	-	-
A-38969	5	Plate, back - water pump body	1	-	-	-
A-45777	5	Plate, back - water pump body	-	-	-	1
A-32-38967	6	Sleeve, water pump body	1	-	-	-
A-23-45778	6	Sleeve, water pump body	-	-	-	1
A-47-26554	7	Impeller, water pump	1	-	-	-
A-47-39487	7	Impeller, water pump	-	-	-	1
A-28-28784	8	Key, impeller drive	1	-	-	-
A-27-33427	9	Gasket, water pump to cover	1	-	-	-
A-27-39625	9	Gasket, plate to base	-	-	-	1
A-38968	10	Plate, face - water pump	1	-	-	-
A-45779	10	Plate, face - water pump	-	-	-	1
A-27-45780	--	Gasket, plate to body	-	-	-	-
A-38972A1	11	Water Pump Cover Assembly	1	-	-	-
A-26-20070	12	Oil Seal, water pump cover	1	-	-	-
A-12-36555	13	Washer, nylon - water outlet tube	1	-	-	-
C-26-33613	14	Seal, water outlet tube	1	-	-	1
A-12-36555	13	Washer, nylon - water outlet tube	-	-	-	1
A-26-25329	14	Seal, water outlet tube	-	-	-	1
A-33513	--	Retainer, water tube seal	-	-	-	1
C-10-28635	--	Screw, water tube seal retainer	-	-	-	1
C-92-36088-1	--	Loctite (.2cc tube)	1	-	-	1

**See Page 7G for Merc 200
(Serial No. 2432536 and up)**

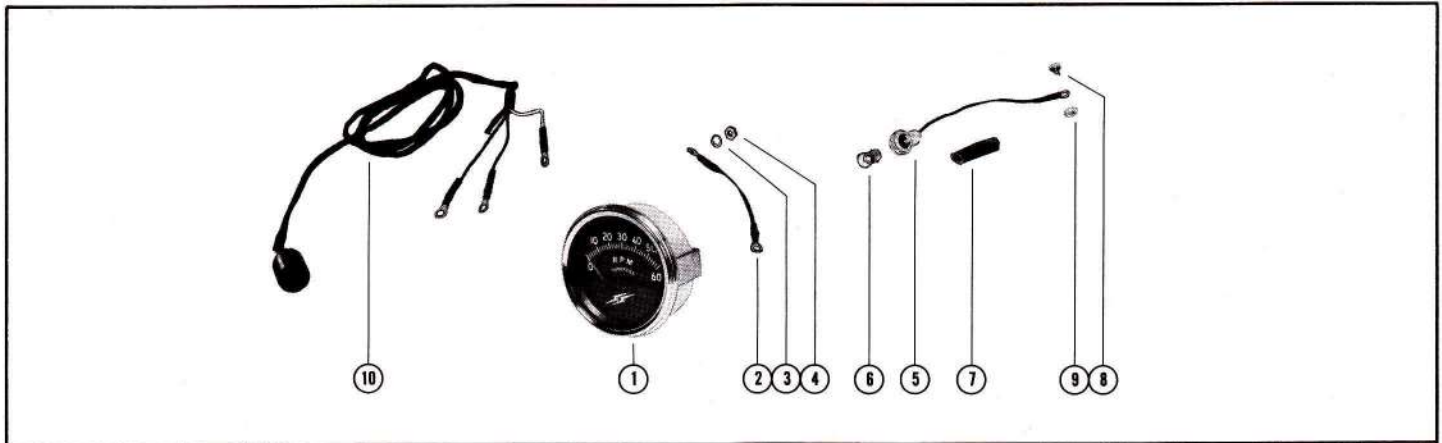
MERC 200 HEAVY DUTY WATER PUMP KIT



PART NO.	REF. NO.	DESCRIPTION	QUAN.
A-46-48749A3	-	Heavy Duty Water Pump Kit <i>(Serial #2432536 and up)</i>	1
A-46-48763A1	1	Water Pump Base Assembly	1
C-26-20070	2	Oil Seal, water pump base	1
C-26-33467	3	Oil Seal, water pump base (spring loaded)	1
C-17-35973	4	Pin, dowel - water pump base to water pump body	2
C-25-33466	5	"O" Ring, water pump base	1
C-27-39626	6	Gasket, water pump base to gear housing	1
C-27-39625	7	Gasket, face plate (lower)	1
A-45779	8	Plate, face - body	1
C-27-45780	9	Gasket, face plate	1
C-47-39487	10	Impeller, water pump	1
C-28-28784	11	Key, impeller drive	1
A-46-48749A4	12	Water Pump Body Ass'y	1
A-54694	13	Insert, water pump	1
C-26-20070	14	Oil Seal, water pump	1
C-12-20684	15	Ring, rubber - centrifugal slinger (drive shaft)	1
C-12-36555	16	Washer, nylon - water pump body	1
C-26-25329	17	Seal, water pump body	1
A-45010	18	Retainer, water pump body seal	1
C-10-45561	19	Screw, seal retainer to water pump body (1 1/8")	1
C-23-45170	20	Sleeve, guide - water inlet tube	1
C-16-49679	21	Stud, water pump to gear housing (3 1/8")	3
C-12-29110	22	Washer, water pump studs	3
C-11-45592	23	Nut, water pump studs	3

**See Page 6G for
Merc 200 (Serial
No. 2432535
and below)**

TACHOMETER ASSEMBLY



PART NO.	REF. NO.	DESCRIPTION	A-4529A4A3	A-45168A4	A-48168A6	A-55398A3	A-55398A4
A-4529A4A3	1	Tachometer Assembly - superseded by A-55398A4	1	-	-	-	-
A-48168A4	1	Tachometer Assembly (round face) - superseded by A-55398A3	-	1	-	-	-
A-48168A6	1	Tachometer Assembly (round face) - superseded by A-55398A4	-	-	1	-	-
A-55398A3	1	Tachometer Assembly (square face) - see note #1 below	-	-	-	1	-
A-55398A4	1	Tachometer Assembly (square face) - see note #2 below	-	-	-	-	1
A-29112	2	Cable, ground lead	1	-	1	1	1
C-12-20878	3	Washer, ground lead to tachometer terminal	4	-	-	-	-
C-11-20645	4	Nut, ground lead to tachometer terminal	4	-	-	-	-
C-32859	5	Socket, tachometer	1	-	-	-	-
C-49917A3	5	Socket and Cable Assembly (not as shown)	-	1	-	1	-
C-32879	6	Light Bulb, tachometer socket	1	1	1	1	1
C-23-32914	7	Sleeve, tachometer socket to wiring harness	1	-	1	-	-
C-10-24231	8	Screw, socket lead to wiring harness	1	-	1	-	-
C-11-20645	9	Nut, socket lead fastening screw	1	-	1	-	-
C-52129A1	10	Harness Assembly, tachometer to remote control	1	-	1	-	1

NOTE #1: A-55398A3 Tachometer Assembly must be used with the following engine serial numbers;

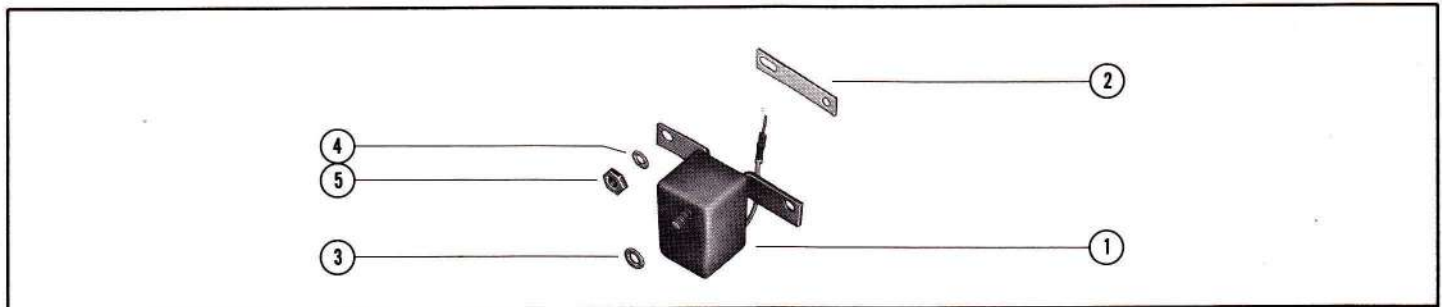
Merc 950"SS" Serial #1968693 thru 2101742
 Merc 1100"SS" Serial #1970668 thru 2103722

NOTE #2: A-55398A4 Tachometer Assembly must be used with the following engine serial numbers:

Merc 400"SS" All Models
 Merc 402"SS" All Models
 Merc 500"SS" Serial #2118093 and up
 Merc 650"SS" Serial #2120434 and up
 Merc 650 (3-Cyl) "SS" All Models
 Merc 800"SS" All Models
 Merc 950"SS" Serial #2111588 and up

Merc 1000"SS" Serial #2318586 and up
 Merc 1100"SS" Serial #2113898 and up
 Merc 1150"SS" All Models
 Merc 1250"SS" Serial #2314956 and up
 Merc 1350"SS" All Models
 Merc 1400"SS" All Models

TACHOMETER MODULE ASSEMBLY, COMPLETE



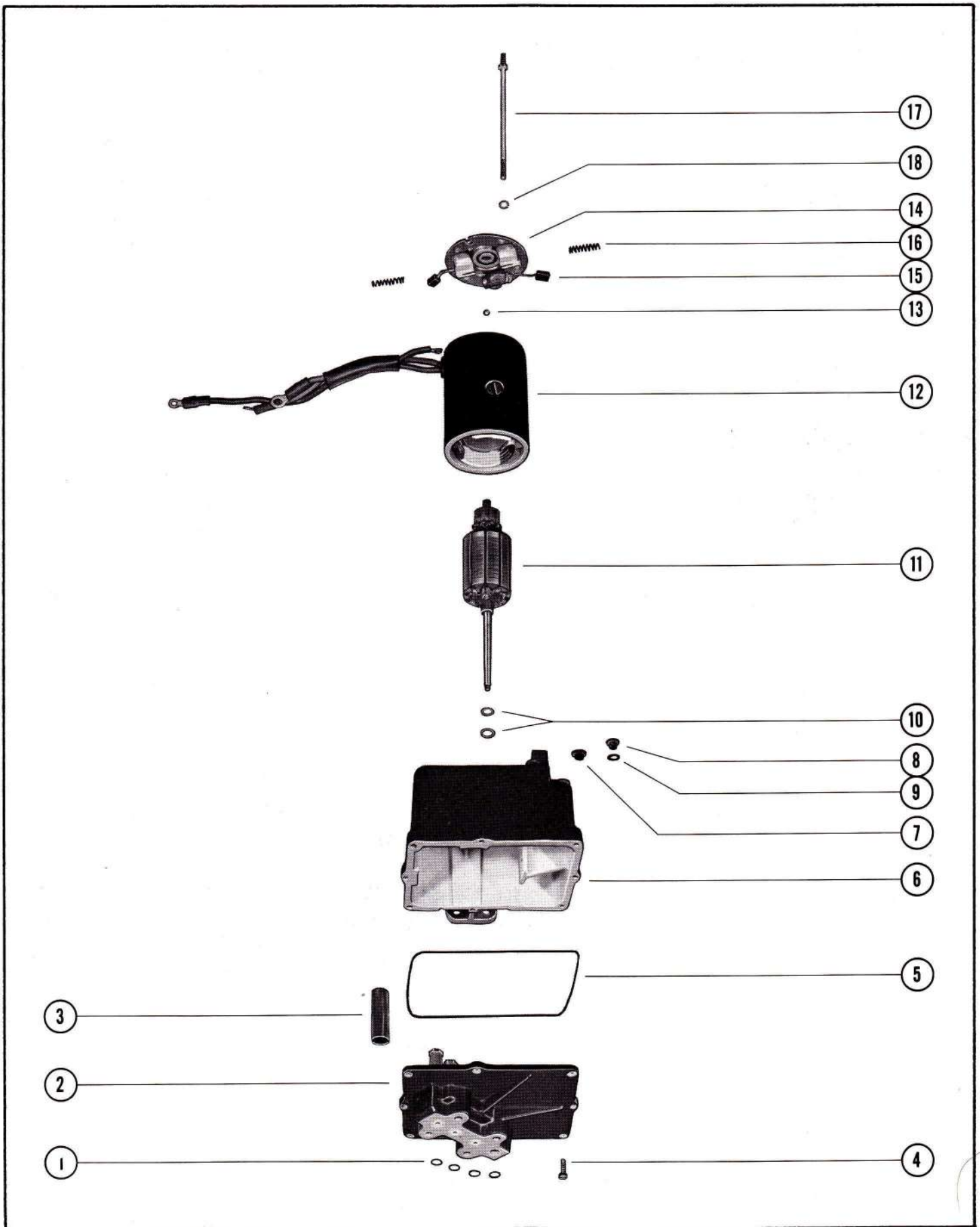
PART NO.	REF. NO.	DESCRIPTION	A-52552A3	A-332-4307A3	A-332-4811A2
A-52552A3	1	Tachometer Module Assembly, Complete (see note below)	1	-	-
A-332-4307A3	1	Tachometer Module Assembly, Complete (Merc 400 - 2 cylinder)	-	1	-
A-332-4811A2	1	Tachometer Module Assembly, Complete (Merc 402)	-	-	1
A-52567	2	Strap, connecting - tachometer module	1	1	1
C-12-20878	3	Washer, tachometer module	1	1	1
C-13-26996	4	Lockwasher, tachometer module	2	2	2
C-11-45076	5	Nut, tachometer module	2	2	2

NOTE: A-52552A3 Tachometer Module Assembly, Complete, must be used on 4-cylinder engines with "Lightning Energizer" Thunderbolt Ignition.

HYDRAULIC PUMP ASSEMBLY

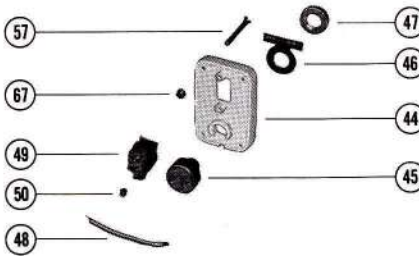
PART NO.	REF. NO.	DESCRIPTION	QUAN.
C-45060A7	-	Hydraulic Pump Assembly, Complete	1
C-25-26834	1	"O" Ring, hydraulic pump	4
C-392-2936	2	Valve Body and Gear Assembly	1
C-392-2618	3	Can, valve body	2
C-10-20411	4	Screw, valve body to reservoir	8
C-392-2937	5	Seal, reservoir to valve body and gear	1
C-392-2939	6	Reservoir Assembly	1
C-10-38257	7	Screw, vent - hydraulic pump	1
C-10-28634	8	Screw, filler - hydraulic pump	1
C-12-20260	9	Washer, sealing - filler screw	1
C-392-2623	10	Washer, thrust - armature	AR
C-392-2943	11	Armature, field and frame	1
C-392-2942	12	Field and Frame Assembly	1
C-392-2944	13	Ball, commutator end plate	1
C-392-2940	14	Plate Assembly, commutator end	1
C-392-2941	15	Brush Set, commutator end plate	1
C-392-2529	16	Spring Set, brush tension	1
C-392-2938	17	Bolt Set, thru - plate and frame to reservoir	1
C-13-26996	18	Lockwasher, thru bolt	2

HYDRAULIC PUMP ASSEMBLY

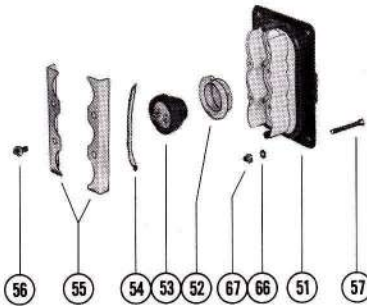


OUTBOARD POWER TRIM KIT, COMPLETE

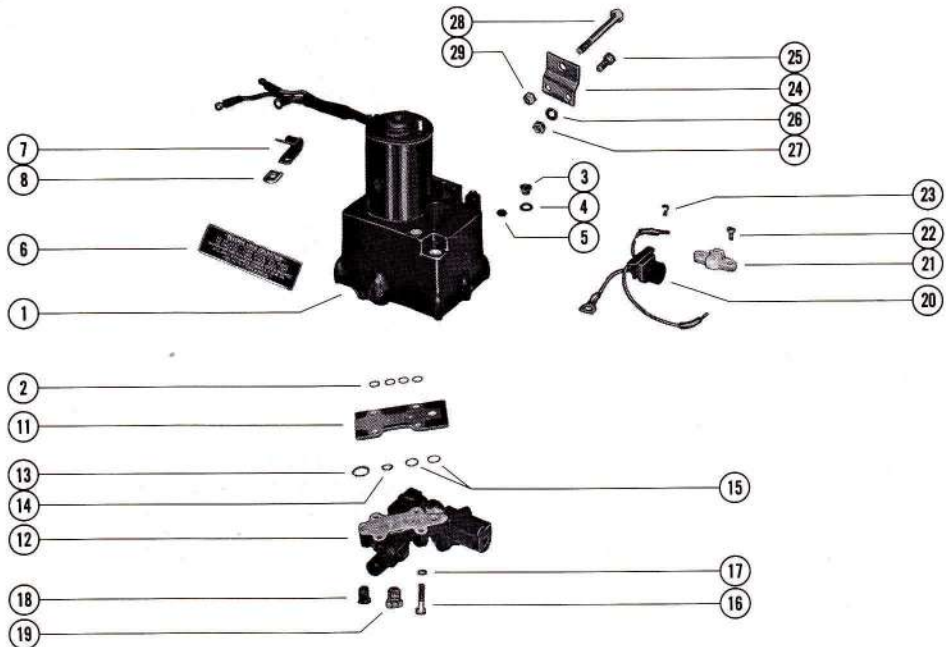
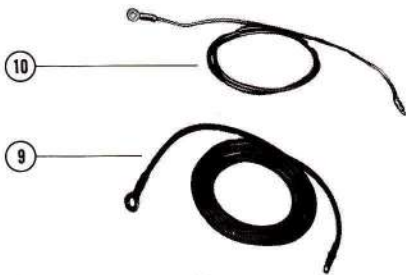
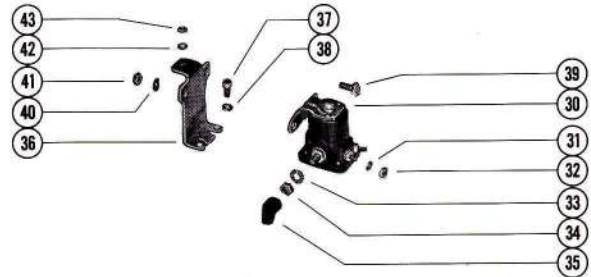
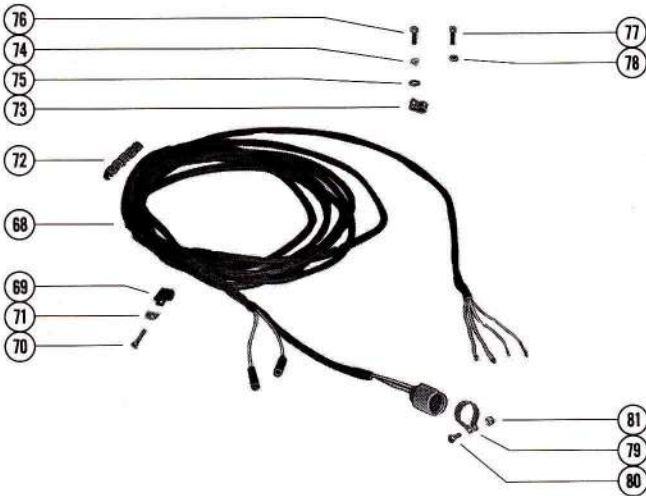
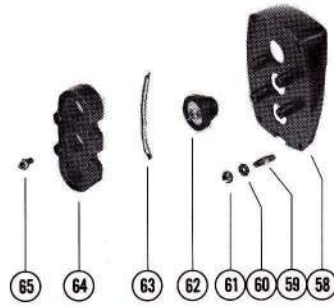
ROCKER SWITCH PANEL



PUSH BUTTON PANEL



BLACK PLASTIC PANEL with MOUNTING STUDS



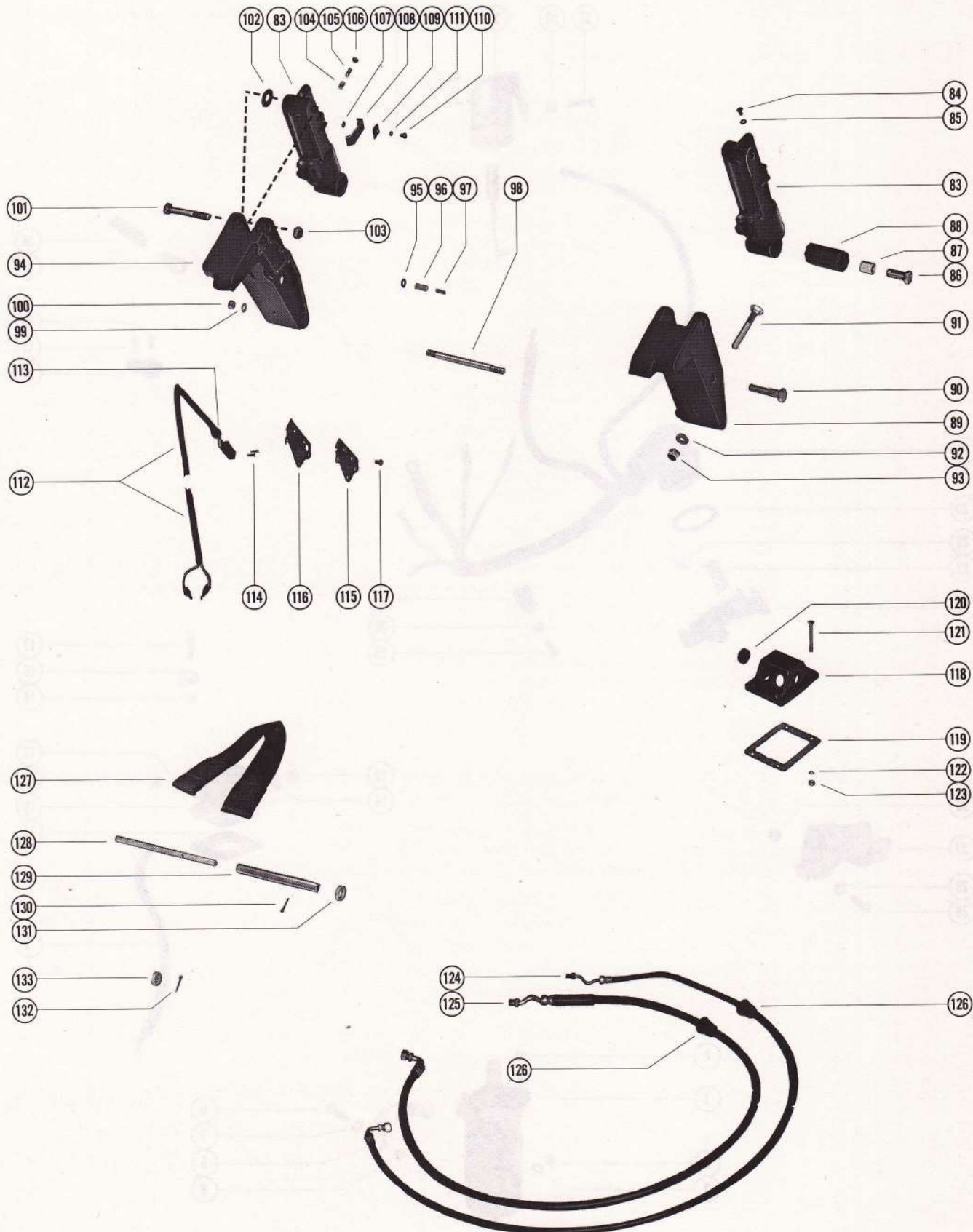
OUTBOARD POWER TRIM KIT, COMPLETE

PART NO.	REF. NO.	DESCRIPTION	A-45194A8	A-45194A10	A-45194A11	A-45194A13
A-45194A8	-	Outboard Power Trim Assembly	1	-	-	-
A-45194A10	-	Outboard Power Trim Assembly	-	1	-	-
A-45194A11	-	Outboard Power Trim Assembly	-	-	1	-
A-45194A13	-	Outboard Power Trim Assembly	-	-	-	1
C-45060A7	1	Hydraulic Pump Assembly (for breakdown, see Page 8G)	1	1	1	1
C-25-26834	2	"O" Ring, hydraulic pump to manifold plate	4	4	4	4
C-10-28634	3	Screw, filler - hydraulic pump	1	1	1	1
C-12-20260	4	Washer, sealing - hydraulic pump filler screw	1	1	1	1
C-10-38257	5	Screw, vent - hydraulic pump	1	1	1	1
A-37-45329	6	Decal, instruction - hydraulic pump	1	1	1	1
C-54-37282	7	Clamp, hydraulic pump harness	1	1	1	1
C-37281	8	"D" Washer, hydraulic pump harness clamp	1	1	1	1
C-32979	9	Battery Lead (positive)	1	1	1	1
C-32988	10	Battery Lead (negative)	1	1	1	1
A-45336	11	Plate, manifold	1	1	1	1
A-45197A2	12	Control Valve Assembly	1	1	1	1
C-25-26834	--	"O" Ring, hydraulic pump to manifold plate (see reference #2)	4	4	4	4
A-25-45254	13	"O" Ring, control valve to manifold plate (3/4" O.D.)	1	1	1	1
C-25-26834	14	"O" Ring, control valve to manifold plate (1/2" O.D.)	1	1	1	1
A-25-45253	15	"O" Ring, control valve to manifold plate (5/8" O.D.)	2	2	2	2
C-10-22421	16	Screw, control valve and manifold plate to hydraulic pump (1 1/4")	4	4	4	4
C-13-26992	17	Lockwasher, control valve and manifold plate screw	4	4	4	4
C-22-38609	18	Plug, control valve (3/8-24")	2	2	2	2
C-22-46008	19	Plug, control valve (1/2-20")	2	2	2	2
C-45325	20	Connector and Harness	1	1	1	1
C-45559	21	Terminal Block, hydraulic pump	1	1	1	1
C-10-28192	22	Screw, terminal block to hydraulic pump (1/2")	2	2	2	2
C-10-30663	23	Screw, harness leads to terminal block (3/8")	2	2	2	2
A-45377	24	Bracket, mounting - hydraulic pump to boat	2	2	2	2
C-10-24234	25	Screw, mounting bracket to hydraulic pump (1")	4	4	4	4
C-13-39107	26	Lockwasher, mounting bracket screw	4	4	4	4
C-11-21908	27	Nut, mounting bracket screw	4	4	4	4
C-10-28009	28	Bolt, hydraulic pump to boat (3 1/4")	2	2	2	2
C-11-35304	29	Nut, hydraulic pump bolt	2	2	2	2
C-25661	30	Starter Solenoid	1	1	1	1
C-13-26996	31	Lockwasher, starter solenoid terminal (#10)	2	2	2	2
C-11-20645	32	Nut, starter solenoid terminal (#10)	2	2	2	2
C-13-26993	33	Lockwasher, starter solenoid terminal (5/16")	2	2	2	2
C-11-20083	34	Nut, starter solenoid terminal (5/16")	2	2	2	2
C-46265	35	Boot, rubber - starter solenoid terminal	2	2	2	2
C-45321	36	Bracket, mounting - starter solenoid	1	1	1	1
C-10-21140	37	Screw, mounting bracket to hydraulic pump (1/2")	2	2	2	2
C-13-26992	38	Lockwasher, mounting bracket screw	2	2	2	2
C-10-34290	39	Screw, starter solenoid to mounting bracket (5/8")	2	2	2	2
C-13-26992	40	Lockwasher, starter solenoid screw	2	2	2	2
C-11-21825	41	Nut, starter solenoid screw	2	2	2	2
C-13-27660	42	Lockwasher, hydraulic pump thru bolt	1	1	1	1
C-11-20645	43	Nut, mounting bracket to hydraulic pump thru bolt	1	1	1	1
A-45341A3	--	Control Panel Assembly, Complete	1	-	-	-
C-48413A2	--	Control Panel Assembly, Complete (GREEN, WHITE AND YELLOW PUSH BUTTONS)	-	1	-	-
C-48413A5	--	Control Panel Assembly, Complete (RED/GREEN, WHITE AND RED PUSH BUTTONS)	-	-	1	-
C-55642A3	--	Control Panel Assembly, Complete	-	-	-	1
C-38705	44	Panel, control	1	-	-	-
C-52337	45	Switch, ignition (with key #30431) ----- when ordering replacement keys also list number stamped on key	1	-	-	-
A-38-45339	46	Insert, ignition switch - control panel	1	-	-	-
C-32861	47	Bezel, ignition switch to control panel	1	-	-	-
C-45340	48	Jumper Wire, ignition switch to rocker switch (red - 4")	1	-	-	-
C-45002	49	Switch, rocker - control panel	1	-	-	-
C-10-38792	50	Screw, rocker switch to control panel (5/16")	2	-	-	-
C-48413	51	Panel, control	-	1	1	-
C-48055	52	Push Button, control panel (OUT - GREEN)	-	1	-	-
C-48056	52	Push Button, control panel (DOWN/IN - WHITE)	-	1	-	-
C-48057	52	Push Button, control panel (UP - YELLOW)	-	1	-	-
C-53108	52	Push Button, control panel (UP/OUT - RED/GREEN)	-	-	1	-
C-53109	52	Push Button, control panel (IN - WHITE)	-	-	1	-
C-53110	52	Push Button, control panel (UP - RED)	-	-	1	-
C-29759	53	Switch, push button	-	3	3	-
C-48078	54	Jumper Wire, push button switch	-	1	1	-
C-53107	54	Jumper Wire, push button switch (purple - 3")	-	-	1	1
C-48438	55	Retainer, switch to control panel	-	2	2	-
C-53517	--	Anchor Strip	-	-	2	-
C-10-32024	56	Screw, switch retainer to control panel	-	4	4	-
C-10-32866	57	Screw, control panel to boat (2")	4	4	4	-
C-55642A1	58	Panel, control	-	-	-	1
C-16-55422	59	Stud, control panel to boat (2")	-	-	-	4
C-12-24676	60	Washer, control panel stud	-	-	-	4
C-11-27164	61	Nut, control panel stud	-	-	-	4
C-55738A1	62	Switch, push button - control panel	-	-	-	3
C-48078	63	Jumper Wire, push button switch (red - 3-1/4")	-	-	-	1
C-55641	64	Retainer, push button switch	-	-	-	1
C-10-30663	65	Screw, switch retainer to control panel (1/2")	-	-	-	4
C-12-24676	66	Washer, control panel screw	-	4	4	-
C-11-20190	67	Nut, control panel screw	4	4	4	-
A-45341-20	68	Harness, control panel (20 feet)	1	1	1	1
C-54-22875	69	Clamp, harness to boat	3	5	-	-
C-10-35401	70	Screw, harness clamp to boat (1")	5	5	-	-
C-22789	71	"D" Washer, harness clamp attaching screw	3	5	-	-
C-33865	72	Binder, nylon - control panel harness	-	1	1	1
C-54-22875	73	Clamp, harness attaching	3	3	3	-
C-54-23567	73	Clamp, harness attaching	-	3	3	-
C-22789	74	"D" Washer, harness clamp screw	3	3	3	-
C-12-20878	75	Washer, harness clamp screw	3	3	3	-
C-10-33615	76	Screw, wood - harness clamp to boat (1")	3	3	3	-
C-10-20644	77	Screw, harness clamp to boat (1")	3	3	3	-
C-11-20645	78	Nut, harness clamp screw	3	3	3	-
C-54-46770	79	Clamp, harness fastening	1	1	1	1
C-10-29227	80	Screw, harness fastening clamp (1/2")	1	1	1	1
C-11-34388	81	Nut, harness fastening screw	1	1	1	1

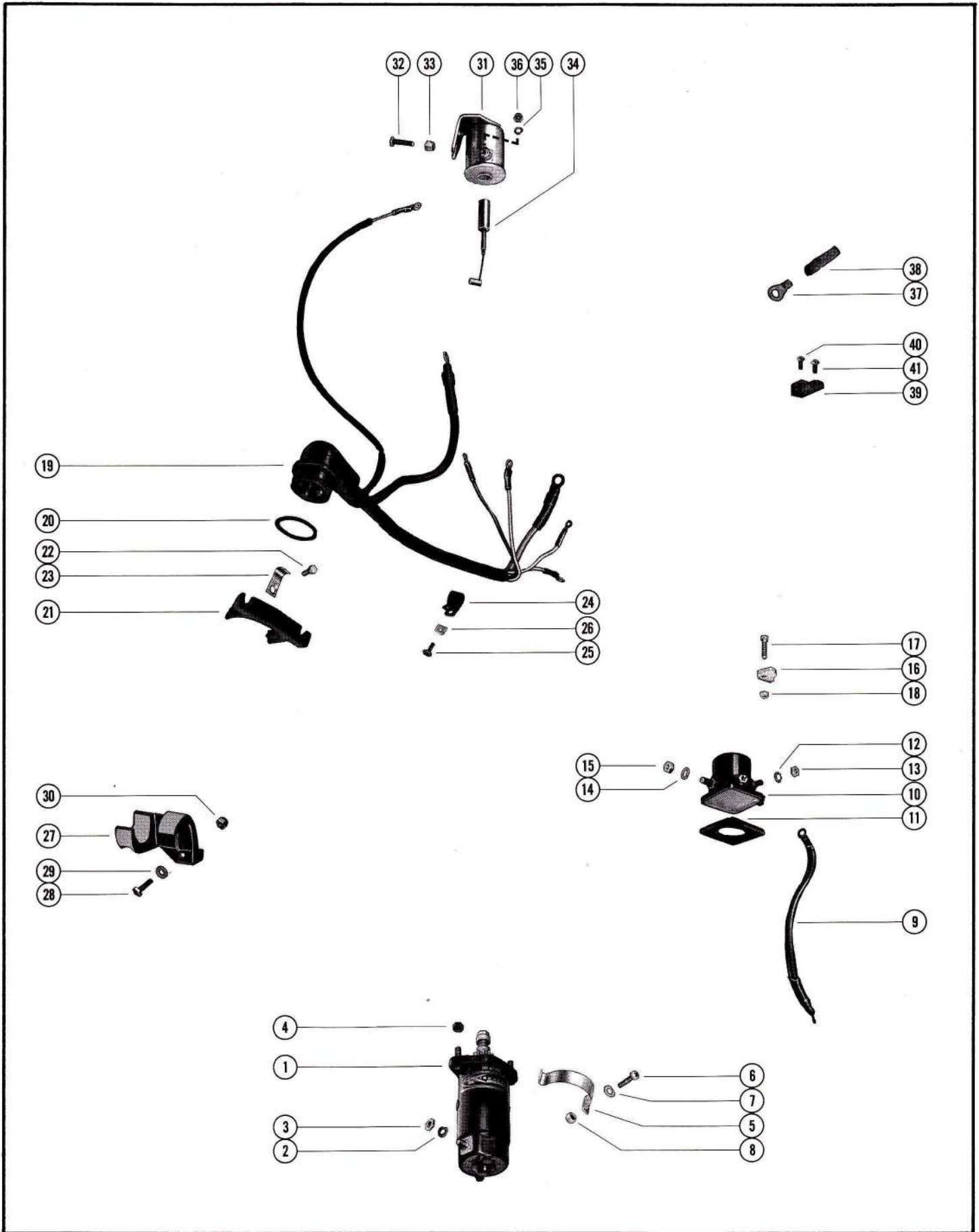
OUTBOARD POWER TRIM KIT, COMPLETE

PART NO.	REF. NO.	DESCRIPTION	A-45194A8	A-45194A10	A-45194A11	A-45194A13
A-45194A8	-	Outboard Power Trim Assembly	1	-	-	-
A-45194A10	-	Outboard Power Trim Assembly	-	1	-	-
A-45194A11	-	Outboard Power Trim Assembly	-	-	1	-
A-45194A13	-	Outboard Power Trim Assembly	-	-	-	1
A-45194A9	83	Shock Cylinder Assembly	2	2	2	2
C-10-45265	84	Screw, bleed - shock cylinder	4	4	4	4
C-25-45016	85	"O" Ring, shock cylinder bleed screw	4	4	4	4
A-10-45264	86	Screw, shock cylinder to lower shock pin (1 9/16")	2	2	2	2
A-23-45280	87	Spacer, shock cylinder - lower	2	2	2	2
A-23-45281	88	Bushing, rubber - shock cylinder	2	2	2	2
A-45195	89	Bracket, mounting - shock cylinder (port)	1	1	1	1
A-10-45263	90	Screw, mounting bracket to upper shock pin (2 1/4")	2	2	2	2
C-10-28009	91	Bolt, mounting bracket to boat transom (3 1/4")	4	4	4	4
C-12-28008	92	Washer, mounting bracket bolt	4	4	4	4
C-11-35304	93	Nut, mounting bracket bolt	4	4	4	4
A-45196A2	94	Bracket Assembly, mounting - shock cylinder (starboard)	1	1	1	1
A-26-24590	95	Oil Seal, starboard mounting bracket	1	1	1	1
A-45286	96	Plunger, limit switch actuating	1	1	1	1
A-24-45272	97	Spring, tension - limit switch plunger	1	1	1	1
A-16-45282	98	Stud, mounting bracket and clamp bracket	1	1	1	1
C-13-26993	99	Lockwasher, mounting bracket to clamp bracket stud	2	2	2	2
C-11-20083	100	Nut, mounting bracket to clamp bracket stud	2	2	2	2
A-10-45328	101	Screw, shock cylinder to mounting bracket (3 9/16")	2	2	2	2
A-12-37807	102	Washer, shock cylinder screw (starboard only)	1	1	1	1
C-11-20696	103	Nut, shock cylinder screw	2	2	2	2
A-24-24390	104	Spring, tension - adjusting stud	1	1	1	1
A-16-21085	105	Stud, adjusting - cut-out limit switch	1	1	1	1
C-11-29488	106	Nut, jam - limit switch adjusting stud	1	1	1	1
C-12-24882	107	Washer, retaining plate and cam screw	AR	-	-	-
A-45508	108	Cam, limit switch adjusting stud	1	1	1	1
A-45509	109	Plate, retaining - limit switch cam	1	1	1	1
C-10-31903	110	Screw, retaining plate and cam to shock cylinder	1	1	1	1
C-13-26996	111	Lockwasher, retaining plate and cam screw	1	1	1	1
A-45326A2	112	Switch Assembly, cut-out limit	1	1	1	1
A-23-45354	113	Bushing, rubber - cut-out limit switch	1	1	1	1
C-10-47255	114	Screw, cut-out limit switch to mounting bracket (9/16")	2	2	2	2
A-45287	115	Cover, limit switch	1	1	1	1
A-27-45275	116	Gasket, limit switch cover	1	1	1	1
C-10-24942	117	Screw, limit switch cover to mounting bracket (7/16")	5	5	5	5
A-45289	118	Cover, inlet - transom	1	1	1	1
A-27-45274	119	Gasket, inlet cover	1	1	1	1
A-25-45507	120	Grommet, rubber - inlet cover	1	1	1	1
C-10-32866	121	Screw, inlet cover to boat (2")	4	4	4	4
C-12-20878	122	Washer, inlet cover screw	4	4	4	4
C-11-29488	123	Nut, inlet cover screw	4	4	4	4
A-32-45327	124	Hose, trim - cylinder to control valve (5') - 13/32" O. D.	2	2	2	2
A-32-45959	125	Hose, lift - cylinder to control valve (5') - 17/32" O. D.	2	2	2	2
C-23-35977	126	Grommet, rubber - lift hose and trim hose	4	4	4	4
A-45491	127	Tilt Stop	1	1	1	1
A-20208	128	Shaft, reverse lock pivot	1	1	1	1
A-45492	129	Tube, mounting - tilt stop	1	1	1	1
C-18-20209	130	Cotter Pin, mounting tube to pivot shaft	1	1	1	1
C-12-24482	131	Washer, tilt stop mounting tube	1	1	1	1
C-18-20209	132	Cotter Pin, tilt pin retaining	1	1	1	1
C-12-39304	133	Washer, tilt pin	1	1	1	1

OUTBOARD POWER TRIM KIT, COMPLETE



ELECTRIC STARTER KIT (MERC 200 - SERIAL #2296267 AND UP)



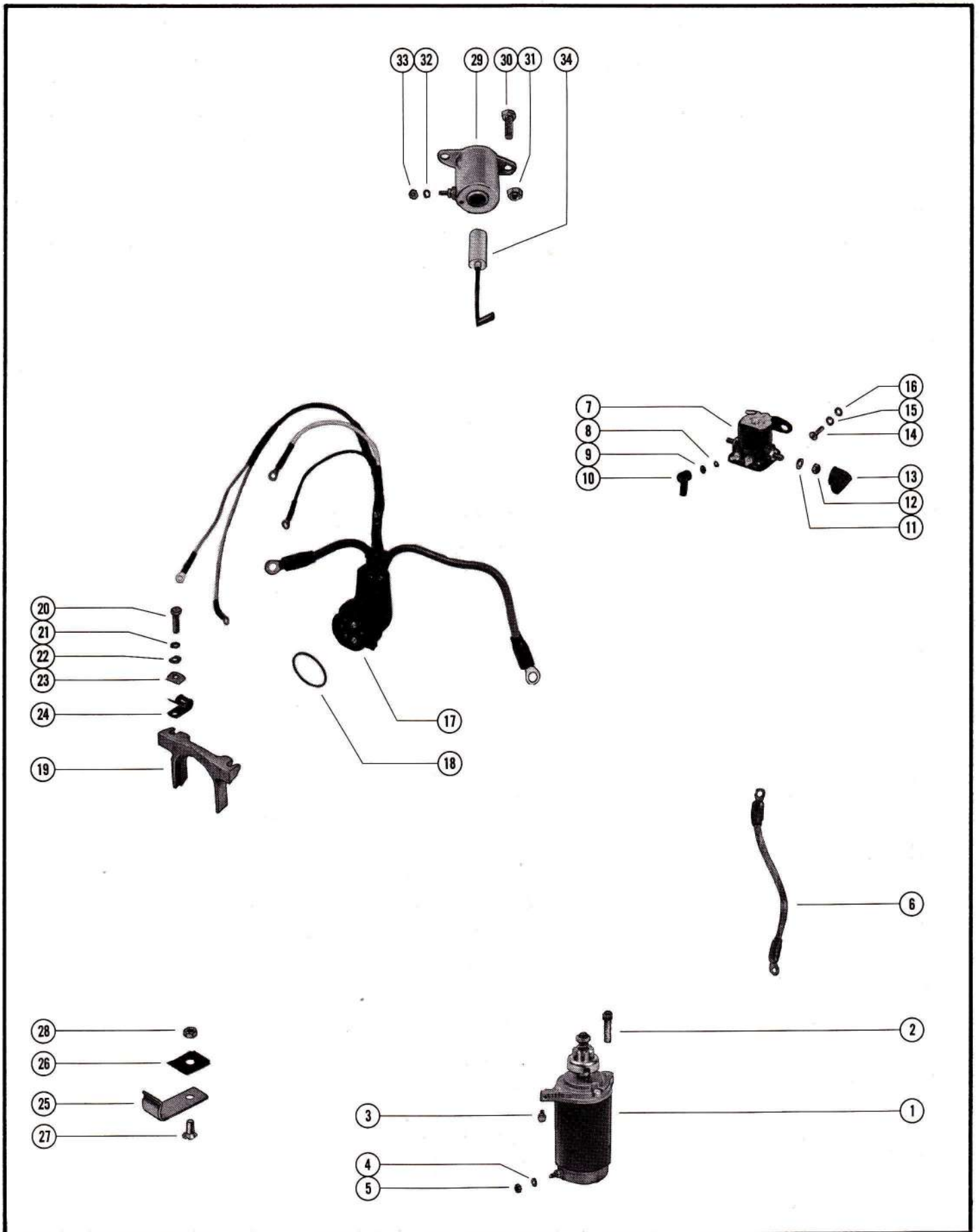
ELECTRIC STARTER KIT (MERC 200 - SERIAL #2296267 AND UP)

PART NO.	REF. NO.	DESCRIPTION	A-50-47216A1	A-50-47216A2
A-50-47216A1	-	Electric Starter Motor Kit (Serial #2296267 thru Serial #2736396)	1	-
A-50-47216A2	-	Electric Starter Motor Kit (Serial #2828611 and up)	-	1
A-50-47216	1	Starter Motor (see Page 22E, Section "E", for breakdown of starter motor)	1	1
C-13-26992	2	Lockwasher, starter motor terminal	1	1
C-11-20088	3	Nut, starter motor terminal (1/4 - 28)	1	1
C-11-20361	4	Nut, starter motor studs (1/4 - 28)	2	2
C-54-47993	5	Clamp, starter motor fastening	1	1
C-10-22483	6	Screw, starter motor clamp to cylinder block (1 1/8")	1	1
C-12-46897	7	Washer, starter motor clamp screw	1	1
C-11-20361	8	Nut, starter motor clamp screw (1/4 - 28)	1	1
A-25596	9	Cable, jumper - starter motor to starter solenoid	1	-
A-54651	9	Cable, jumper - starter motor to starter solenoid	-	1
A-47886	10	Solenoid, starter	1	1
A-27-47829	11	Gasket, starter solenoid	1	1
C-13-26996	12	Lockwasher, starter solenoid terminal (#10)	2	2
C-11-20645	13	Nut, starter solenoid terminal (10-32)	2	2
C-13-20202	14	Lockwasher, starter solenoid terminal (5/16")	2	2
C-11-20083	15	Nut, starter solenoid terminal (5/16 - 24)	2	2
A-54-47830	16	Clamp, nylon - starter solenoid fastening	2	2
C-10-45862	17	Screw, starter solenoid clamp to crankcase (7/8")	2	2
C-11-46438	18	Nut, starter solenoid clamp screw	2	2
A-47929	19	Wiring Harness, internal	1	-
A-57022	19	Wiring Harness, internal	-	1
A-24-28975	20	Spring, garter - internal wiring harness	1	1
A-54-47831	21	Clamp, internal wiring harness to bottom cowl	1	-
A-54-52876	21	Clamp, internal wiring harness to bottom cowl	-	1
C-10-20189	22	Screw, lead wire and harness clamp to bottom cowl (3/4")	2	2
C-54-33361	23	Clamp, lead wire fastening to harness clamp	2	2
C-54-23567	24	Clamp, wiring harness to crankcase flange	1	1
C-10-30663	25	Screw, wiring harness clamp fastening (3/8")	1	1
C-22789	26	"D" Washer, wiring harness clamp	1	1
A-47951	27	Bracket, support - external wiring harness	1	1
C-10-36137	28	Screw, wiring harness support to bottom cowl (1")	1	1
C-12-24664	29	Washer, wiring harness support screw	1	1
C-11-46887	30	Nut, wiring harness support screw	1	1
A-47928	31	Choke Solenoid	1	-
A-54292A4	31	Choke Solenoid	-	1
C-10-22956	32	Screw, choke solenoid to front cowl support bracket (7/8")	1	1
C-11-46887	33	Nut, choke solenoid screw	1	1
A-48315A5	34	Plunger Assembly, choke solenoid	1	-
A-56074A1	34	Plunger Assembly, choke solenoid	-	1
C-13-26996	35	Lockwasher, choke solenoid terminal	1	1
C-11-20645	36	Nut, choke solenoid terminal	1	1
C-22924	37	Terminal, #10 Ring	-	1
C-23-37961	38	Sleeve, terminal	-	1
A-45915	39	Terminal Block	-	1
C-10-31206	40	Screw, terminal block to exhaust manifold cover (7/16")	-	2
C-10-38792	41	Screw, terminal to block (5/16")	-	1

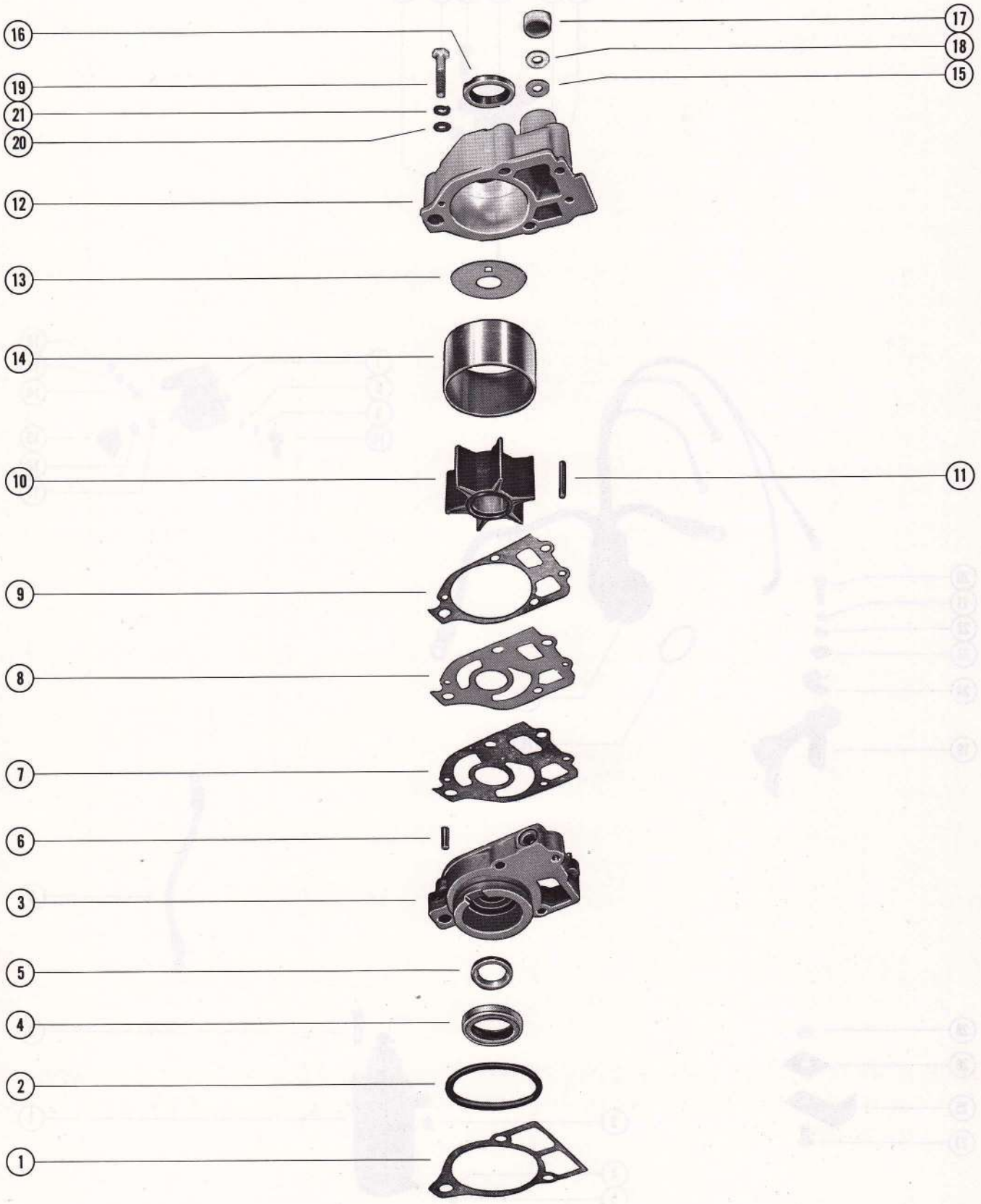
ELECTRIC STARTER KIT (MERC 400 - 2 CYLINDER)

PART NO.	REF. NO.	DESCRIPTION	QUAN.
A-50-55601A1	-	Electric Starter Motor Kit	1
A-50-55601	1	Starter Motor (See Page 22E, Section "E", for breakdown of starter motor)	1
C-10-35213	2	Screw, mounting flange to starter motor	2
C-10-29197	3	Screw, black jumper lead to starter ground (5/8")	1
C-13-26992	4	Lockwasher, yellow jumper lead to starter terminal	1
C-11-20890	5	Nut, starter terminal (1/4-20)	1
A-56466	6	Cable, jumper - starter motor to starter solenoid	1
C-25661	7	Solenoid, starter	1
C-13-26996	8	Lockwasher, starter solenoid terminal (#10)	2
C-11-20645	9	Nut, starter solenoid terminal (10-32)	2
C-46265	10	Boot, large yellow lead	1
C-13-26993	11	Lockwasher, starter solenoid terminal (5/16")	2
C-11-20083	12	Nut, starter solenoid terminal (5/16-24)	2
C-38938	13	Boot, small yellow and black leads	2
C-10-21625	14	Screw, starter solenoid to cowl support bracket (3/4")	2
C-13-26992	15	Lockwasher, starter solenoid support screw (1/4")	2
C-12-29245	16	Washer, starter solenoid support screw (1/4")	2
A-56370	17	Wiring Harness, internal	1
C-24-28975	18	Spring, garter	1
C-54-52876	19	Clamp, internal wiring harness to bottom cowl	1
C-10-45862	20	Screw, lead wire and harness clamp to bottom cowl	2
C-13-26996	21	Lockwasher, lead wire and harness clamp to bottom cowl	2
C-12-20128	22	Washer, lead wire and harness clamp to bottom cowl	2
C-22789	23	"D" Washer, wiring harness leads clamp	1
C-54-26550	24	Clamp, lead wires to cowl harness clamp	1
A-34228	25	Support, external harness	1
A-52907	26	Insulator, wiring harness support to bottom cowl	1
C-10-31163	27	Screw, wiring harness support to bottom cowl (5/8")	1
C-11-46887	28	Nut, wiring harness support screw	1
A-54293A5	29	Solenoid, choke	1
C-10-26065	30	Screw, cowl support bracket to choke solenoid (1")	2
C-11-46793	31	Nut, choke solenoid screw (5/16-24)	2
C-13-26996	32	Lockwasher, gray lead to choke solenoid (#10)	1
C-11-20645	33	Nut, choke solenoid terminal (10-32)	1
A-56074A2	34	Plunger Assembly, choke solenoid	1

ELECTRIC STARTER KIT (MERC 400 - 2 CYLINDER)



HEAVY DUTY WATER PUMP KIT



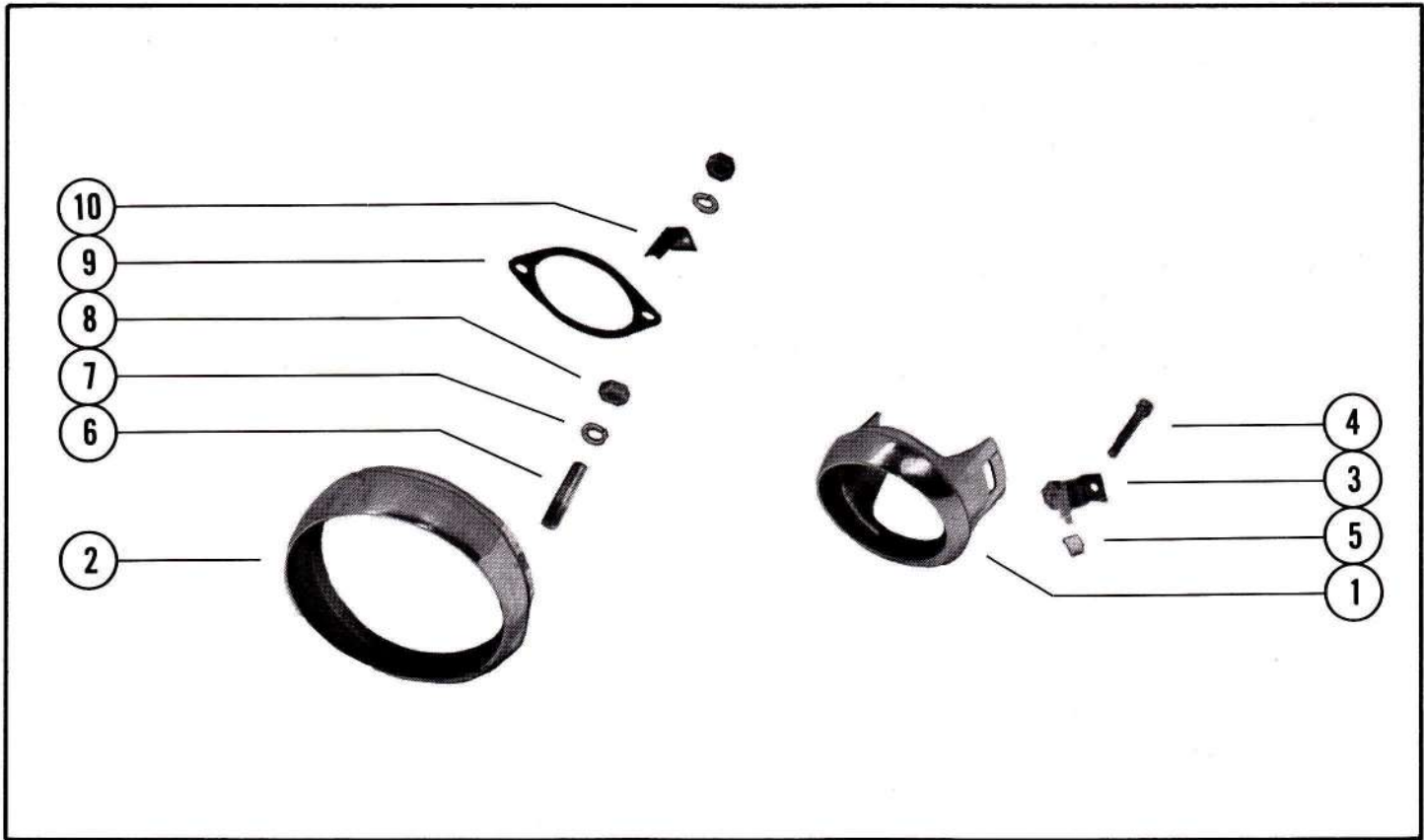
HEAVY DUTY WATER PUMP KIT

PART NO.	REF. NO.	DESCRIPTION	C-46-36087A2	C-46-38505A2	A-46-37313A2	C-46-37433A4	C-46-48743A3
C-46-36087A2	-	Heavy Duty Water Pump Kit	1	-	-	-	-
C-46-38505A2	-	Heavy Duty Water Pump Kit <i>(see note #1 below)</i>	-	1	-	-	-
A-46-37313A2	-	Heavy Duty Water Pump Kit <i>(Merc 350 and 500)</i>	-	-	1	-	-
C-46-37433A4	-	Heavy Duty Water Pump Kit <i>(superseded by C-46-48743A3)</i>	-	-	-	1	-
C-46-48743A3	-	Heavy Duty Water Pump Kit (PLASTIC) - Merc 650, 950, 1000, 1100 and 1250	-	-	-	-	1
C-27-32438	1	Gasket, water pump base to gear housing	1	-	-	-	*1
A-27-32771	1	Gasket, water pump base to gear housing	-	-	1	-	-
C-25-30224	2	"O" Ring, water pump base	1	-	-	-	1
C-25-26855	2	"O" Ring, water pump base	-	-	1	-	-
C-46-38931A1	3	Water Pump Base Assembly	1	-	-	-	-
C-46-48758A1	3	Water Pump Base Assembly (PLASTIC)	-	-	-	-	1
C-26-31489	4	Oil Seal, water pump base - lower	1	-	-	-	1
C-26-31507	5	Oil Seal, water pump base - upper	1	-	-	-	1
C-17-35973	6	Pin, dowel - water pump base to water pump body	2	2	2	2	2
C-27-32433	7	Gasket, lower - water pump base to face plate	1	1	-	1	*1
A-27-32769	7	Gasket, lower - water pump base to face plate	-	-	1	-	-
C-35961	8	Plate, face - water pump base to water pump body	1	1	-	-	-
A-37319	8	Plate, face - water pump base to water pump body	-	-	1	-	-
C-45048	8	Plate, face - water pump base to water pump body	-	-	-	-	*1
C-27-35975	9	Gasket, upper - face plate to water pump body	1	1	-	-	-
A-27-37321	9	Gasket, upper - face plate to water pump body	-	-	1	-	-
C-27-45049	9	Gasket, upper - face plate to water pump body	-	-	-	1	-
C-27-32434	9	Gasket, upper - face plate to water pump body	-	-	-	-	*1
C-47-30221	10	Impeller, water pump	1	1	-	1	*1
C-47-20268	10	Impeller, water pump	-	-	1	-	-
C-28-56654	11	Key, impeller drive	1	1	-	1	*1
C-17-23733	11	Pin, impeller drive	-	-	1	-	-
C-46-35962A1	12	Water Pump Body Assembly	1	-	-	-	-
C-46-38505A1	12	Water Pump Body Assembly	-	1	-	-	-
A-46-37313A1	12	Water Pump Body Assembly	-	-	1	-	-
C-46-37433A3	12	Water Pump Body Assembly	-	-	-	1	-
C-46-48743A2	12	Water Pump Body Assembly (PLASTIC)	-	-	-	-	*1
C-35960	13	Plate, back - water pump body	1	1	-	-	-
A-37315	13	Plate, back - water pump body	-	-	1	-	-
C-45046	13	Plate, back - water pump body	-	-	-	1	-
C-35959	14	Insert, water pump body	1	1	-	-	-
A-37317	14	Insert, water pump body	-	-	1	-	-
C-23-45047	14	Sleeve, water pump body	-	-	-	1	-
C-53168	14	Insert, water pump body	-	-	-	-	*1
C-12-36446	15	Washer, water pump body	1	1	-	1	1
C-26-31507	16	Oil Seal, water pump body	1	1	-	1	*1
A-26-32121	16	Oil Seal, water pump body	-	-	1	-	-
C-26-36557	17	Seal, rubber - water inlet tube	1	1	-	1	-
A-26-38452	17	Seal, rubber - water inlet tube	-	-	1	-	-
C-26-38970	17	Seal, rubber - water inlet tube	-	-	-	-	*1
A-12-38453	18	Washer, nylon - water inlet tube	-	-	1	-	-
C-10-53155	19	Screw, water pump housing to base	-	-	-	-	1
C-12-38753	20	Washer, water pump housing studs	-	-	-	-	3
C-13-26992	21	Lockwasher, water pump housing to base screw	-	-	-	-	1
C-92-36088-1	--	Loctite (.2cc tube)	1	1	1	1	*1

NOTE: C-46-36087A2 Heavy Duty Water Pump Kit has to be used on all Merc 650, 850 and 1000 engines with a single seal in the water pump base. C-46-38505A2 Heavy Duty Water Pump Kit must be used with all Merc 650, 850, 900 and 1000 engines with a double seal in the water pump base and on older units with water pick-up in gear case strut.

NOTE: C-46-48743A5 Heavy Duty Water Pump Kit, used on Merc 650, 800, 1150 and 1350 (1970 and 1971), includes all parts designated by a (*) in the quantity column.

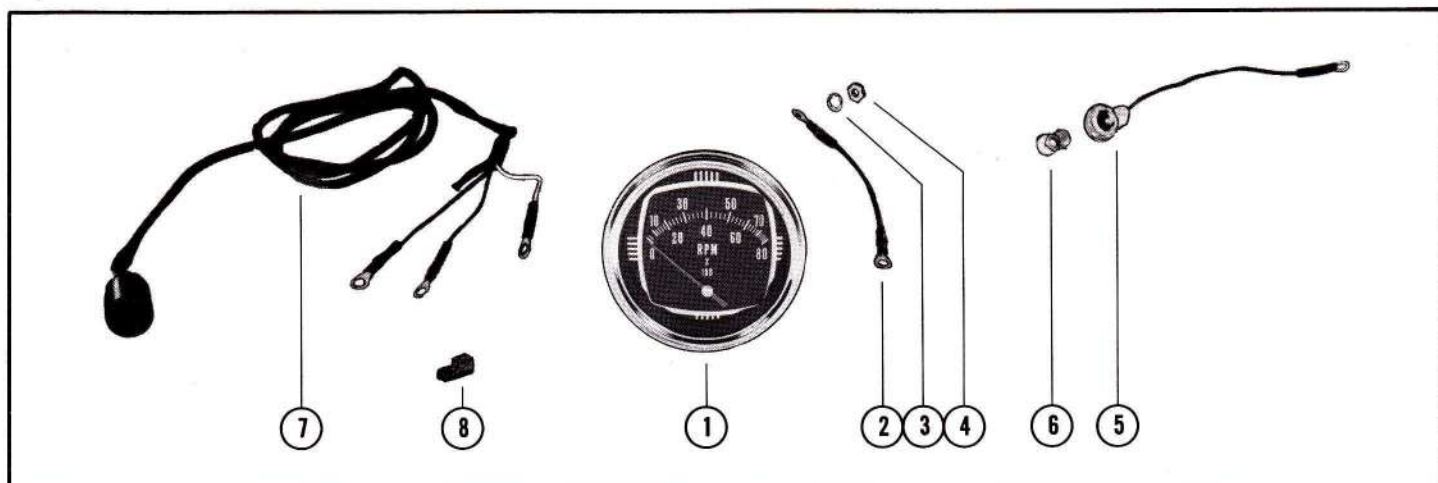
BEZEL KITS



BEZEL KITS

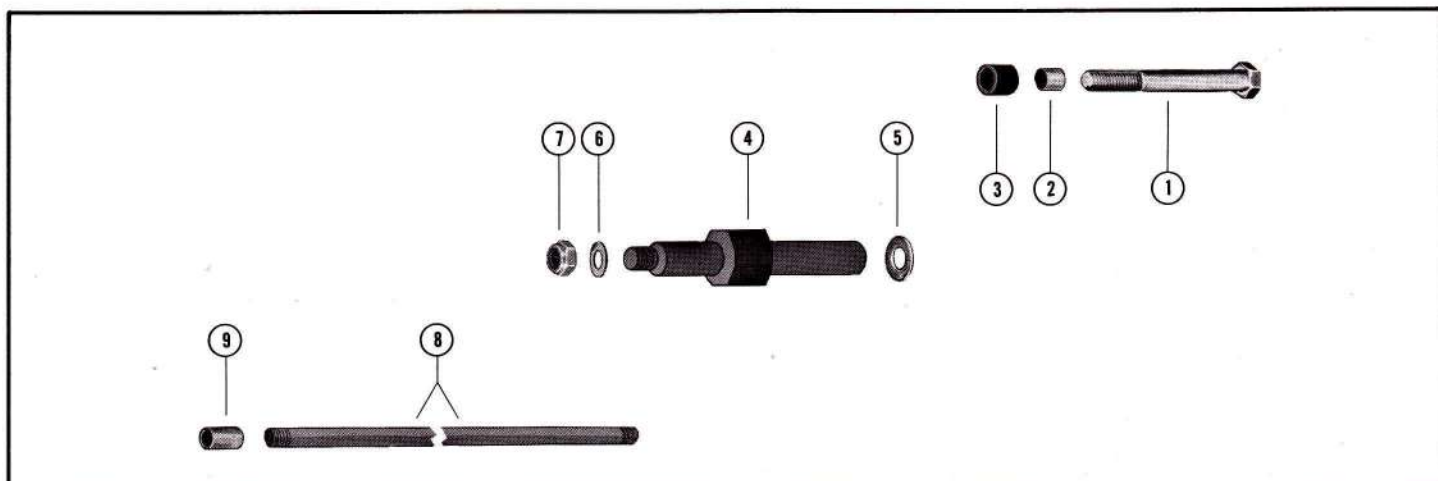
PART NO.	REF. NO.	DESCRIPTION	C-53322A1	C-53321A1	C-55315A1	C-55193A1
C-53322A1	1	Bezel Kit (round - small gauges)	1	-	-	-
C-53321A1	2	Bezel Kit (round - large gauges)	-	1	-	-
C-55315A1	1	Bezel Kit (square - small gauges)	-	-	1	-
C-55193A1	2	Bezel Kit (square - large gauges)	-	-	-	1
C-54-53323A1	3	Clip Assembly, bezel mounting	2	2	-	-
C-10-54467	4	Screw, bezel clip to dashboard (1 1/4")	2	2	-	-
C-53490	5	Shoe, bezel clip screw	2	2	-	-
C-16-55422	6	Stud, bezel to dashboard (2")	-	-	2	2
C-13-22238	7	Lockwasher, bezel stud	-	-	4	4
C-11-20645	8	Nut, bezel stud	-	-	4	4
C-55340	9	Retainer, gauge to dashboard	-	-	1	-
C-55423	9	Retainer, gauge to dashboard	-	-	-	1
C-54-55341	10	Clip, bezel stud	-	-	2	2

TACHOMETER ASSEMBLY (Heavy Duty)



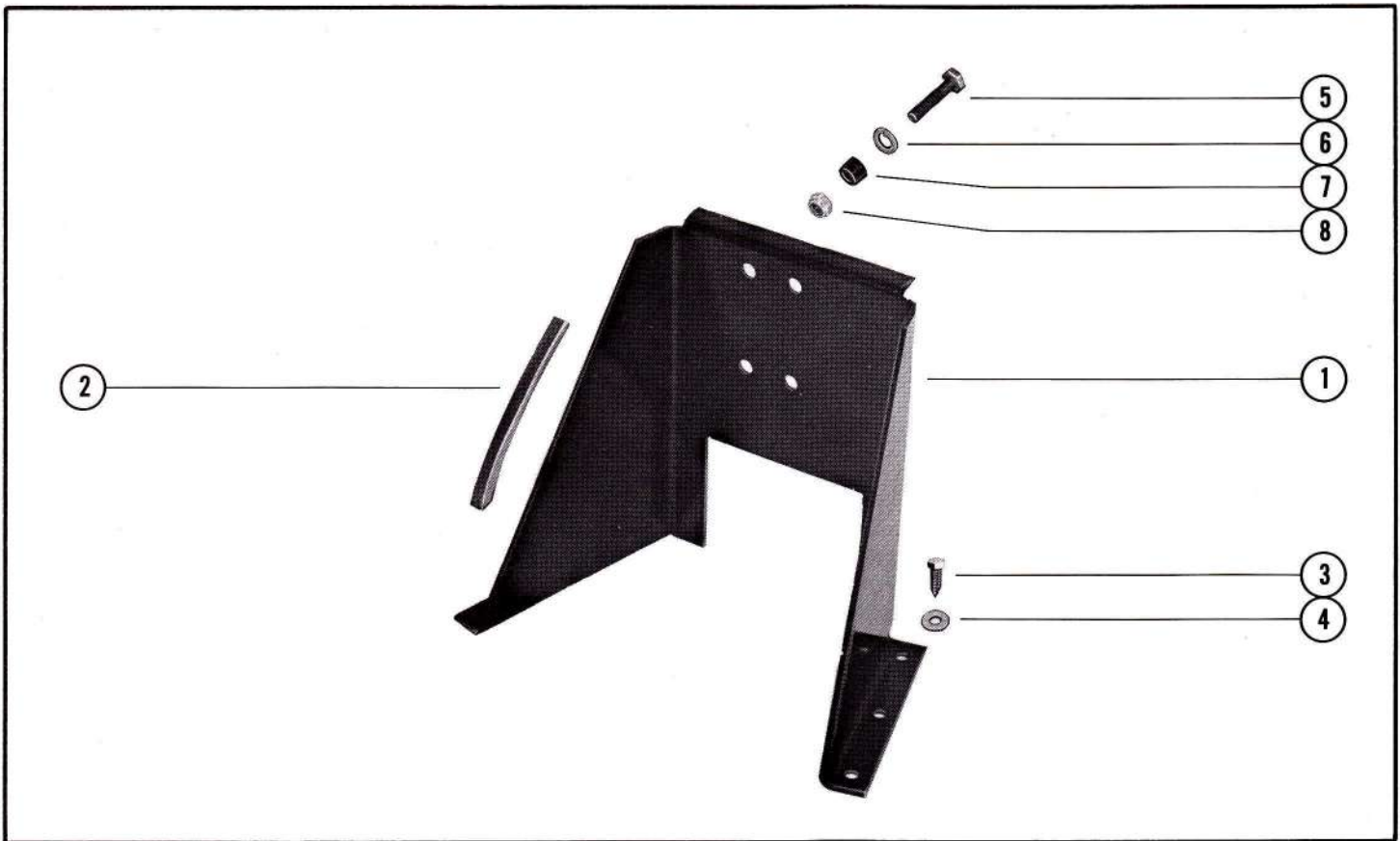
PART NO.	REF. NO.	DESCRIPTION	QUAN.
A-59777A1	1	Tachometer Assembly, Complete (heavy duty)	1
A-46054	2	Cable, jumper lead	1
C-12-20878	3	Washer, tachometer terminals	2
C-11-45076	4	Nut, clamp and lead fastening terminals	6
C-49917A3	5	Socket and Cable Assembly (not as shown)	1
C-32879	6	Light Bulb, tachometer socket	1
C-46239	7	Harness, tachometer to remote control	1
A-45915	8	Terminal Block, switch box	1

ADAPTOR ASSEMBLY (Power Trim)



PART NO.	REF. NO.	DESCRIPTION	QUAN.
A-62538A1	-	Adaptor Assembly, power trim	1
C-10-62882	1	Screw, power trim bracket to shock mounting pin (3 1/4")	2
C-23-62885	2	Spacer, mounting bracket screw (1/2" I. D.)	2
C-23-62884	3	Spacer, mounting bracket screw (3/4" I. D.)	2
C-17-62887	4	Pin, trim cylinders to swivel bracket	2
C-12-63099	5	Washer, trim cylinder pin (3/4" I. D.)	2
C-12-54012	6	Washer, trim cylinder pin (1/2" I. D.)	2
C-11-35778	7	Nut, trim cylinder pin	2
C-16-62888	8	Stud, power trim bracket to clamp bracket (18 7/8")	1
C-23-62886	9	Spacer, power trim bracket stud (11/32" I. D.)	2

HYDRAULIC PUMP MOUNTING KIT



HYDRAULIC PUMP MOUNTING KIT

PART NO.	REF. NO.	DESCRIPTION	QUAN.
C-58397A3	1	Bracket Ass'y, mounting - hydraulic pump (floor mounting)	1
C-58491	2	Bumper, rubber - pump mounting bracket	2
C-10-59784	3	Screw, pump mounting bracket attaching (1")	6
C-12-29245	4	Washer, pump mounting bracket	6
C-10-20362	5	Screw, hydraulic pump to mounting bracket (1 1/2")	4
C-13-39107	6	Lockwasher, hydraulic pump screw	4
C-23-36534	7	Spacer, hydraulic pump screw	4
C-11-21908	8	Nut, hydraulic pump screw	4