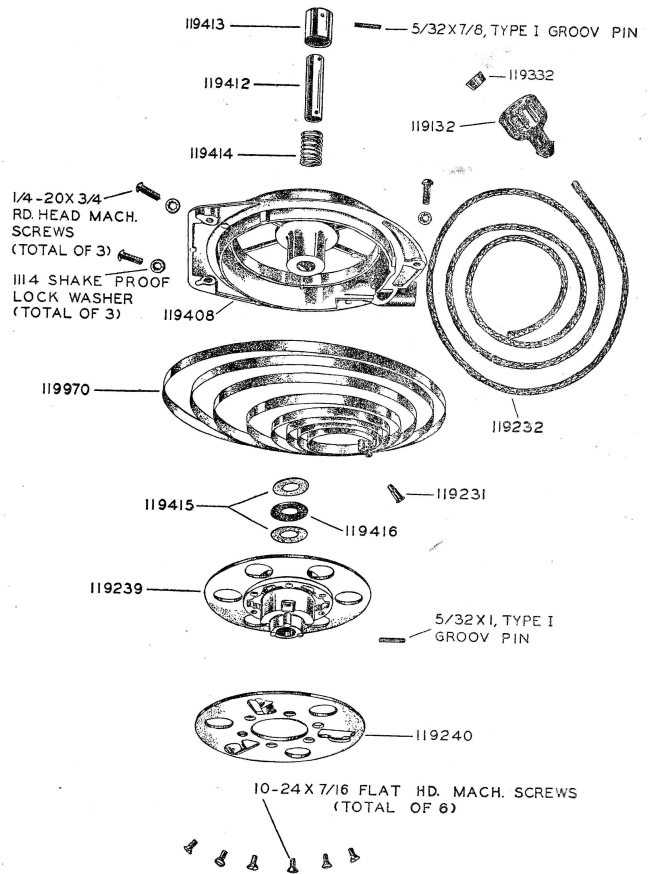


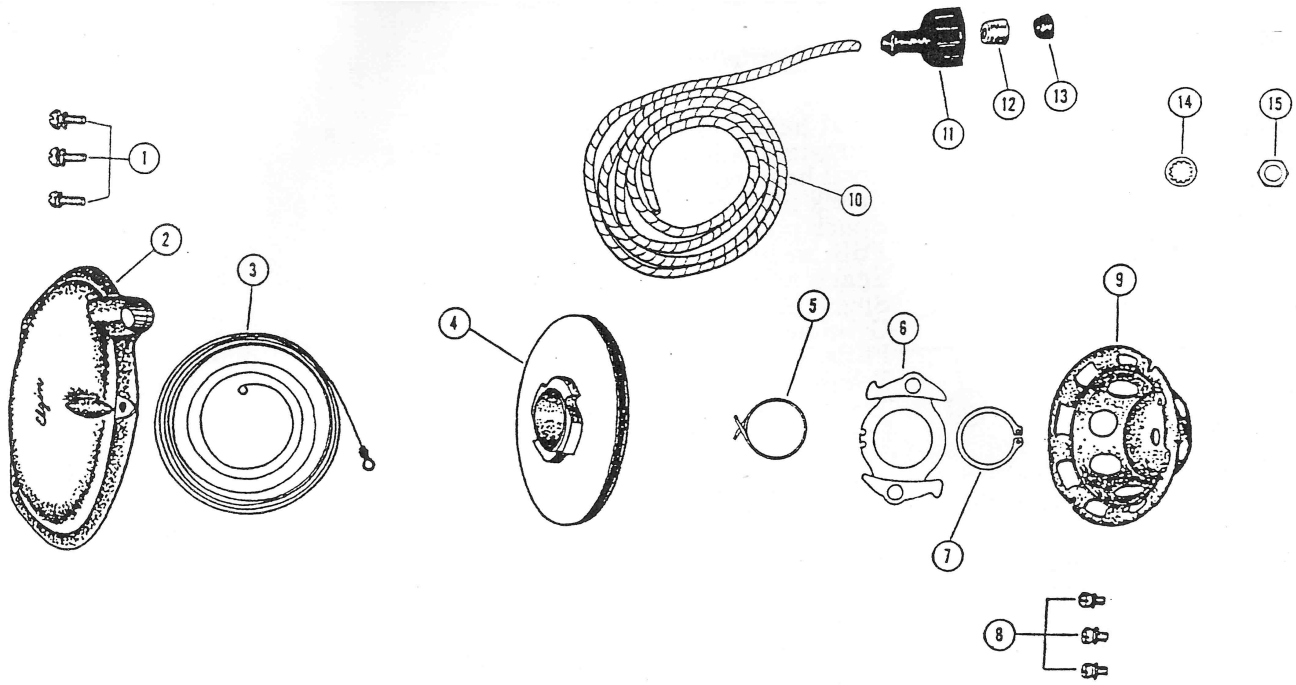
# Pushbutton Recoil

## Rewind Starter

Part No.	Description
119413	Push button 5/32 x 7-8 Type I, groove pin
119412	Starter pulley stem
119414	Push button spring
119332	Starter rope handle plug
119132	Starter rope handle (without plug)
119232	Starter rope
119408	Starter cover (3) 1/4-20 x 3/4 Round head machine screw (3) No. 1114 Shakeproof lock washer
119970	Recoil spring
119231	Recoil spring bolt
119415	Fiber thrust washer
119416	Rubber thrust washer
119239	Upper loose pulley 5/32 x 1, Type I, groove pin
119240	Lower loose pulley (6) 10-24 x 7/16 Flat head machine screws
A119408	Rewind starter assembly (includes all parts listed above)



# Automatic Recoil



# 2 hp Recoil

