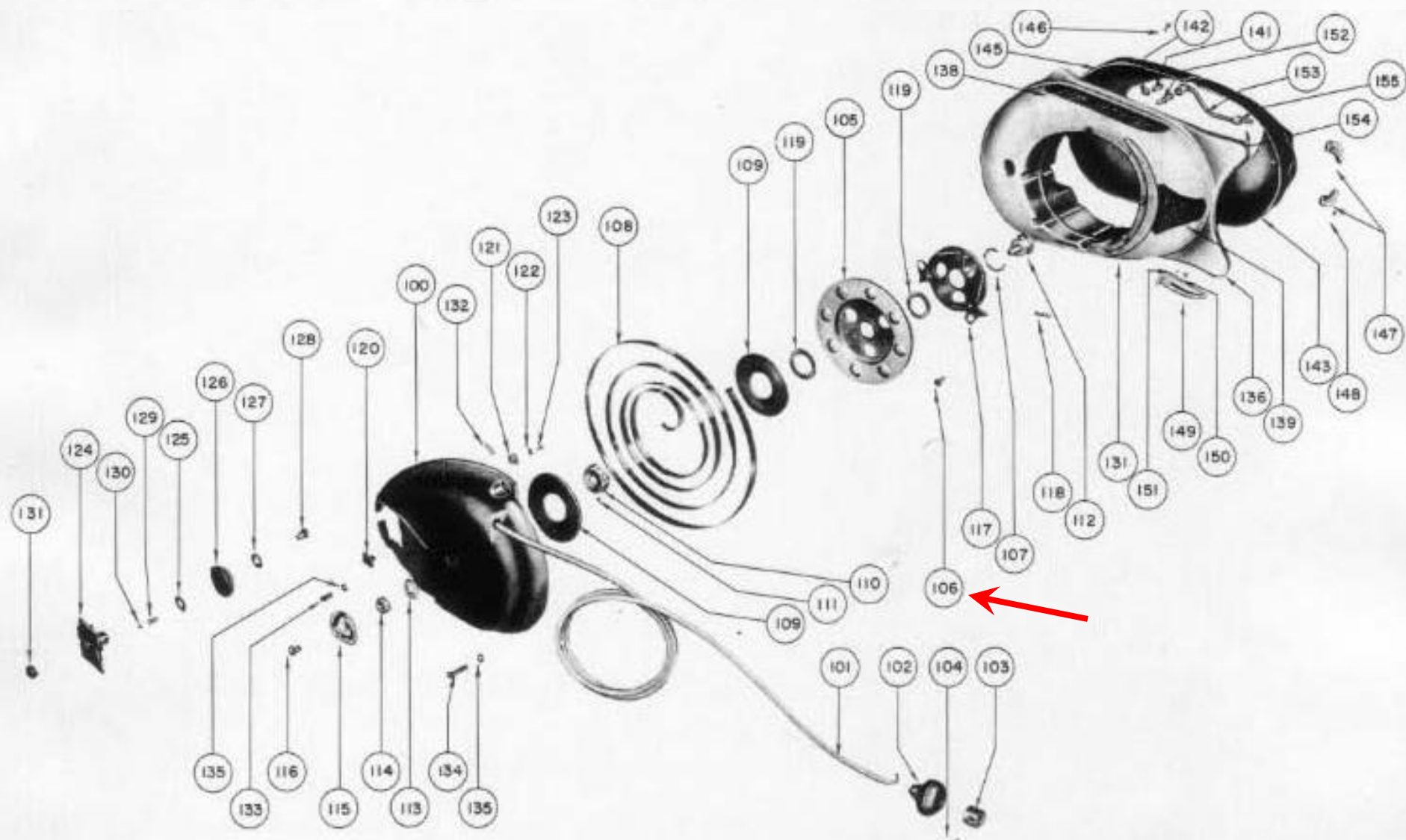


Martin Motors

STARTER and COVER ASSEMBLY



REPAIR PARTS LIST
Martin **"40"-SERIES B3**
STARTER AND COVER ASSEMBLY

Ref. No.	Part No.	Description
	25619	Starter and cover assembly—complete (black) includes items 100 to and including item 132
100	25650	Starter housing (black)
101	25251	Starter cord and handle assembly includes items 102 to and including 104
102	25125	Starter handle
103	25206	Starter handle plug assembly includes item 104
104	4-S-2	Screw—starter handle plug (oval head)
105	25127	Starter pulley assembly
106	72-S-1	Rivet—starter cord retaining
107	25107	Spring—starter friction
108	25103	Rewind spring
109	25338	Washer—rewind spring
110	25109	Anchor—rewind spring
111	8-S-5	Screw—rewind spring anchor
112	25096	Starter pivot bolt
113	25269	Washer—starter pivot bolt
114	24-S-1	Nut—pivot bolt
115	25173	Cover—pivot bolt
116	4-S-5	Screw—pivot bolt cover
117	25121	Pawl retainer assembly
118	25244	Starter bias spring
119	25273	Spring washer
120	25652	Filler cap latch (black)
121	25609	Tension spring—filler cap latch
122	35-S-4	Washer—filler cap latch
123	17-S-1	Screw—filler cap latch
	25604	Filler cap assembly—complete (black) includes items 114 to and including item 121
124	25624	Filler cap (black)
125	35-S-14	Spacer—tank seal
126	25188	Tank seal