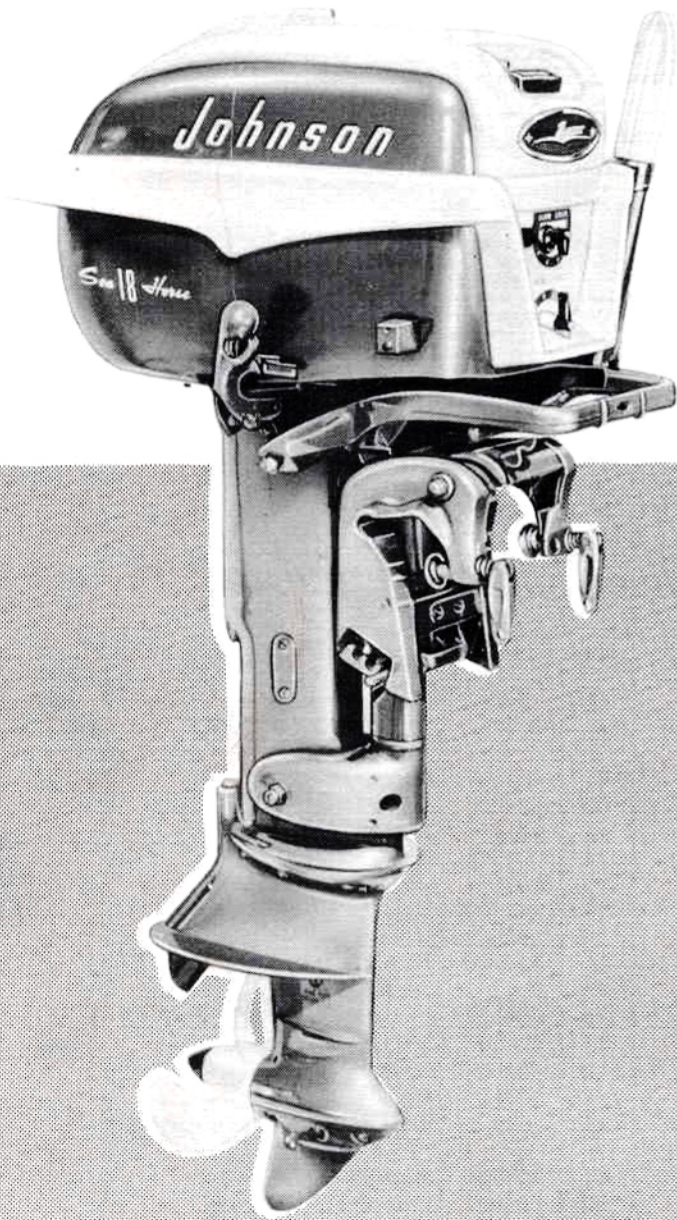


Johnson **MOTORS**

PARTS CATALOGUE



MODELS
FD-FDL-II
18 HP

1

9

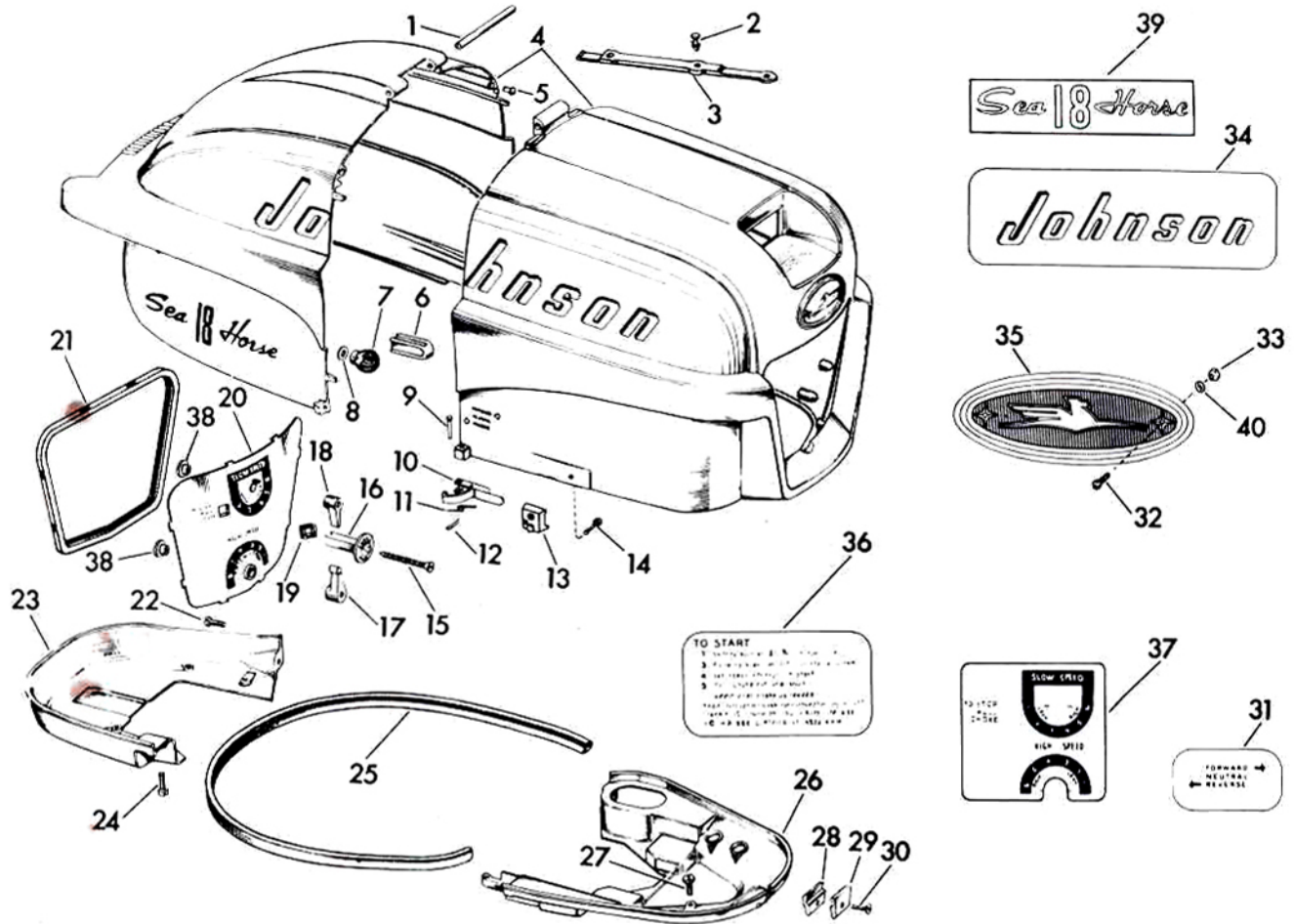
5

7

Distributors for British Columbia
HOFFARS LIMITED
1645 First Ave. West
VANCOUVER 9, - B. C.



PETERBOROUGH - CANADA



ITEM NO.	PART NO.	NAME OF PART	QTY. PER MOTOR
1	303536	Hinge Pin	1
2	304485	Pin	1
3	376627	Strap & Pin Assembly	1
4	376964	Shroud, Transfer & Bumper Assembly	1
5	203290	Bumper	2
6	303922	Bumper	2
7	304461	Bumper	2
8	304928	Washer	2
9	303522	Pin	2
10	376129	Clamp & Lever Assembly	2
11	303519	Spring	2
12	303590	Cotter Pin	2
13	304665	Boss	1
14	19-189	Screw	1
15	302761	Screw	1
16	303718	Choke Knob	1
17	304360	Adjusting Lever - High Speed	1
18	303847	Adjusting Lever - Slow Speed	1
19	303796	Grommet	1
20	376914	Control Panel & Transfer	1

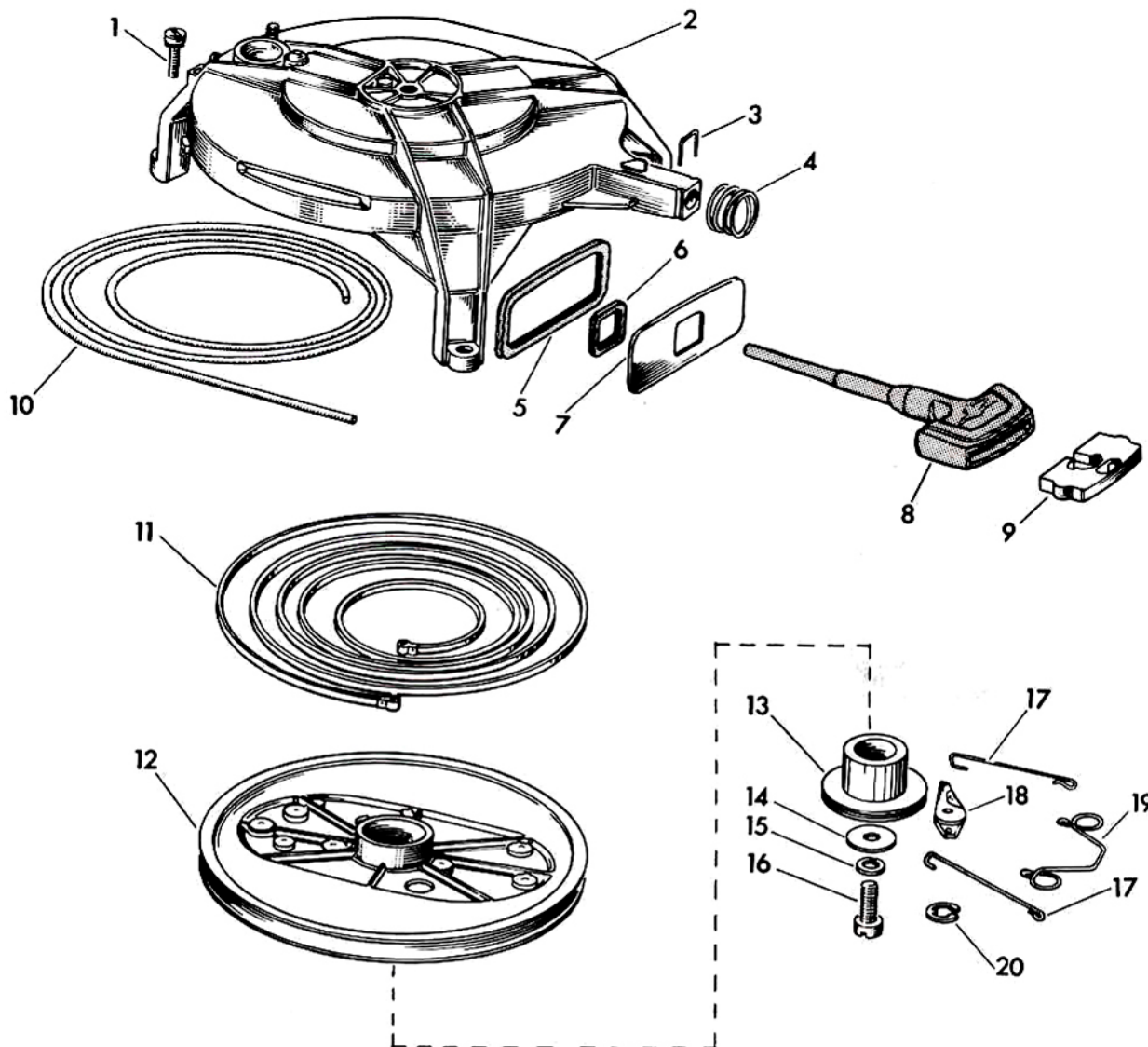
ITEM NO.	PART NO.	NAME OF PART	QTY. PER MOTOR
21	303537	Grommet	1
22	304013	Screw	1
23	304915	Cover - Lower Rear	1
24	304012	Screw	4
25	303014	Seal	1
26	304799	Cover - Lower Front	1
27	304015	Screw	1
28	304020	Clamp - Inner	1
29	304021	Clamp - Outer	1
30	304022	Screw	1
31	304349	Transfer - Gearshift	1
32	304997	Screw	2
33	304999	Nut	2
34	304336	Transfer - Johnson - Port & Starboard	2
35	304866	Medallion	1
36	304823	Transfer - Starting Instructions	1
37	304835	Transfer - Control Panel	1
38	303535	Grommet	2
39	304845	Transfer - Seahorse Port & Starboard	2
40	304998	Washer	2

NOTE: DECAL SET ASSEMBLY PART NO. 377054

SPECIFY MODEL AND SERIAL NUMBER OF MOTOR WHEN ORDERING PARTS

**MODEL
FD-FDL-11**

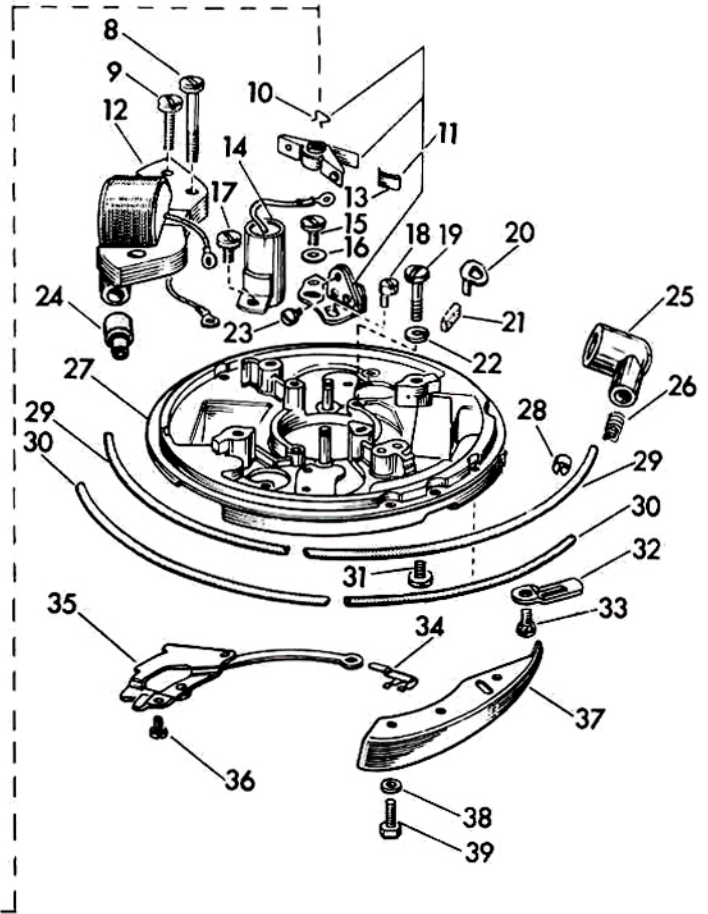
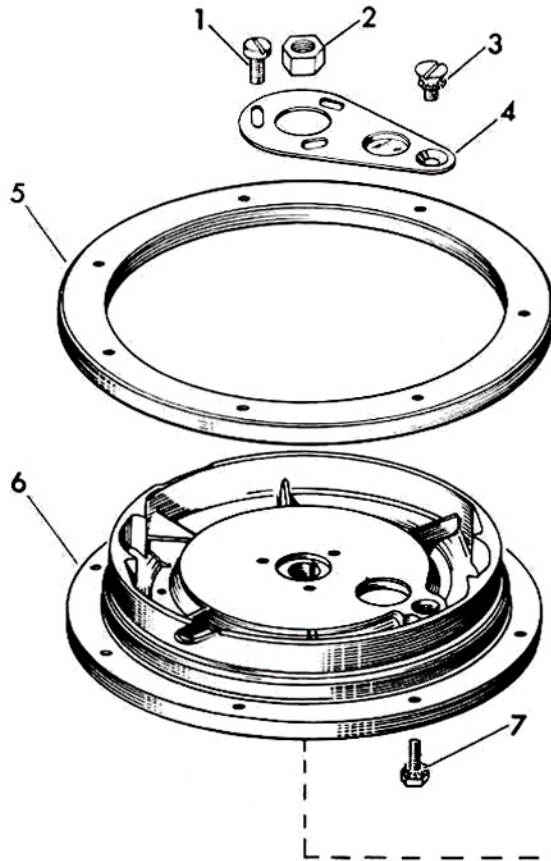
**STARTER
GROUP**



ITEM NO.	PART NO.	NAME OF PART	QTY. PER MOTOR
1	303288	Screw	3
2	376665	Starter Housing & Pin Assembly	1
	376667		
3	304237	Spring Clip - Starter Housing	1
4	304235	Spring - Cover to Starter Housing	1
5	303529	Grommet	1
6	304236	Grommet	1
7	304238	Cover	1
8	304502	Handle - Starter	1
9	304325	Anchor - Rope to Handle	1

ITEM NO.	PART NO.	NAME OF PART	QTY. PER MOTOR
10	203822	Rope - Starter	1
11	41-197	Starter Spring	1
12	376666	Starter Pulley & Pin Assembly	1
13	203699	Spindle - Starter	1
14	202356	Washer	1
15	13-51	Lockwasher - Starter Retaining Screw	1
16	13-588	Screw - Starter Retainer	1
17	203725	Link - Friction Spring to Pawl	2
18	203698	Pawl - Starter	1
19	203697	Friction Spring	1
20	203470	Retaining Ring - Starter Pawl	1

ORDER ALL PARTS FROM YOUR JOHNSON SEA-HORSE DEALER



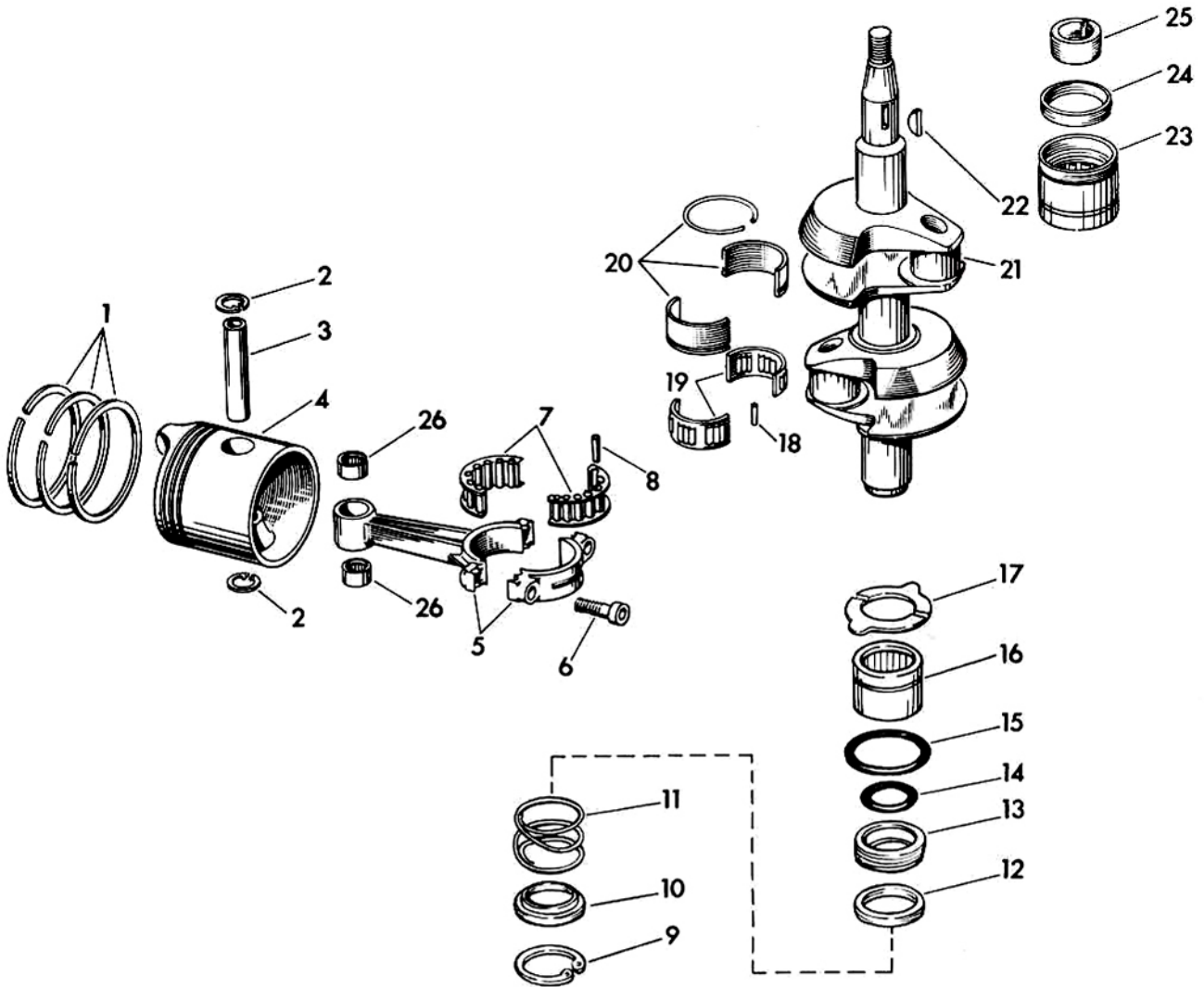
ITEM NO.	PART NO.	NAME OF PART	QTY. PER MOTOR
1	203751	Screw	3
2	301988	Nut	1
3	510293	Screw	1
4	510292	Cover	1
5	304737	Ring	1
6	580228	Flywheel & Cover Assembly	1
	580227	Flywheel, Ring & Cover Assembly	
7	303698	Screw	8
8	510286	Screw	2
9	510195	Screw	4
10	71-1052	Spring Clip	2
11	580148	Breaker Assembly	2
12	580197	Coil & Lamination Assembly	2
13	510204	Clip	2
14	510173	Condenser	2
15	510278	Screw	4
16	510208	Bow Washer	2
17	510193	Screw	8
18	510185	Eccentric Screw	2
19	510192	Screw	2
20	510188	Oiler Clip	1
21	510189	Oiler Wick	1
22	3-28	Lockwasher	2

ITEM NO.	PART NO.	NAME OF PART	QTY. PER MOTOR
23	510194	Screw	2
24	510289	Grommet	2
25	510232	Rubber Cover	2
26	510231	Spring Terminal	2
	580210	Armature Plate, Sleeve & Post Assembly	
27	580230	Armature Plate Assembly Complete	1
	71-1239	Marker - High Tension Lead - Upper	
28	510239	High Tension Lead - Upper	1
29	510210	High Tension Lead - Lower	1
30	510278	Screw	4
31	510218	Clamp	1
32	510193	Screw	8
33	303146	Spring Clip	1
34	376313	Link & Stop Assembly	1
35	510193	Screw	8
36	203277	Cam	1
37	300154	Washer	2
38	304441	Screw	2

SPECIFY MODEL AND SERIAL NUMBER OF MOTOR WHEN ORDERING PARTS

**MODEL
FD-FDL-11**

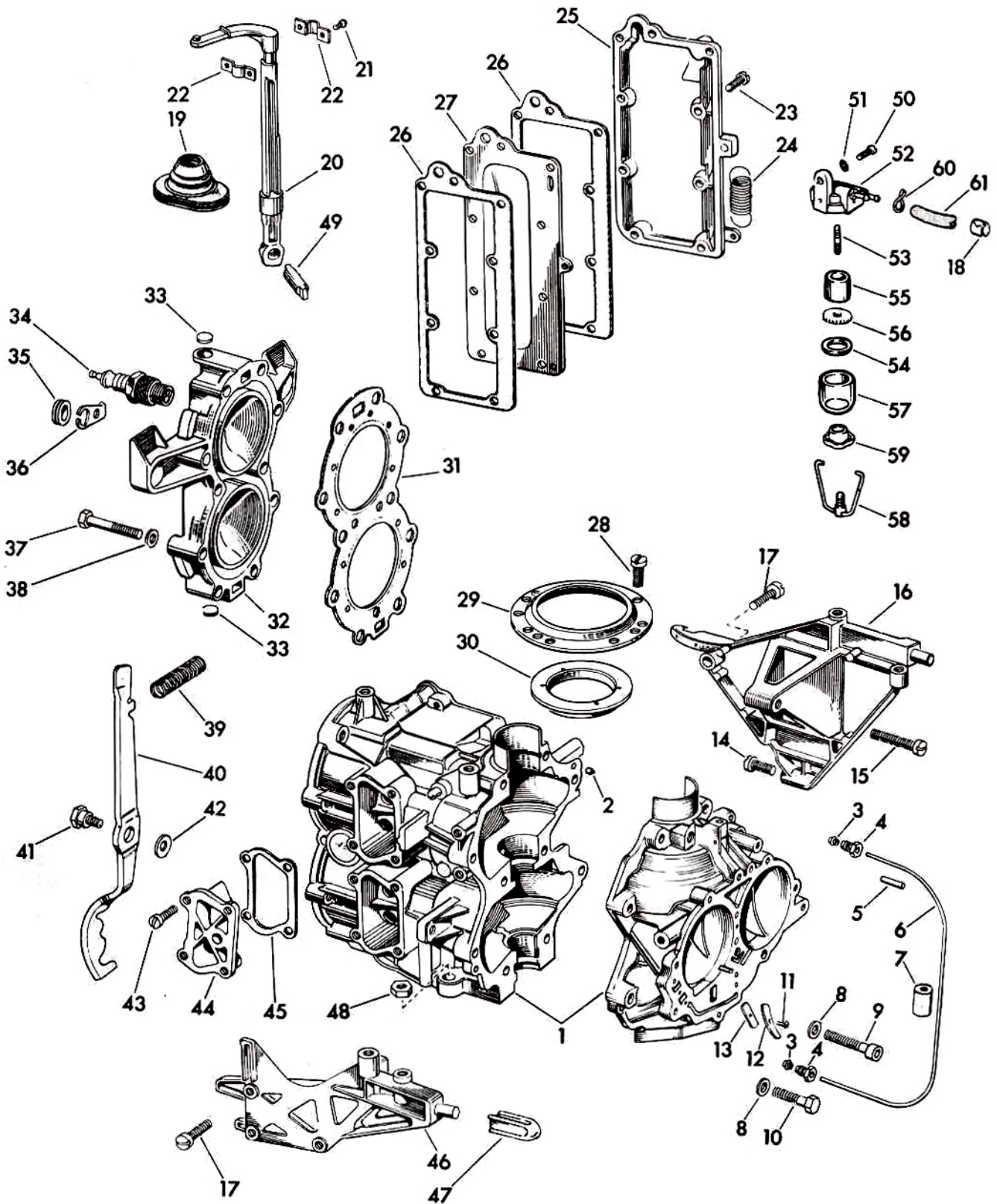
**CRANKSHAFT
GROUP**



ITEM NO.	PART NO.	NAME OF PART	QTY. PER MOTOR
1	486406	Piston Ring Set	1
2	302577	Retaining Ring	4
3	304691	Piston Pin	2
4	376992	Piston, Dowel Pin & Retaining Ring Assy.	2
5	376981	Connecting Rod & Wrist Pin Brg. Assembly	2
6	202967	Screw	4
7	203244	Retainer - Connecting Rod Bearing	2
8	302529	Needle Bearing	30
9	302536	Retaining Ring	1
10	303801	Retaining Washer	1
11	302539	Spring	1
12	302594	Retaining Washer	1
13	302538	Seal	1

ITEM NO.	PART NO.	NAME OF PART	QTY. PER MOTOR
14	302540	O-Ring	1
15	302537	O-Ring - Lower Bearing	1
16	375763	Roller Bearing Assembly - Lower	1
17	304732	Thrust Washer	1
18	302584	Roller - Center Bearing	18
19	302755	Bearing - Cage - Center	2
20	302585	Split Sleeve - Center Bearing	1
21	304794	Crankshaft	1
22	120395	Key	1
23	376433	Roller Bearing & Seal Assembly	1
24	303804	Seal - Upper Bearing	1
25	510168	Cam	1
26	304692	Needle Bearing - Connecting Rod	4

ORDER ALL PARTS FROM YOUR JOHNSON SEA-HORSE DEALER



SPECIFY MODEL AND SERIAL NUMBER OF MOTOR WHEN ORDERING PARTS



ITEM NO.	PART NO.	NAME OF PART	QTY. PER MOTOR
1	376814	Cylinder and Crankcase	1
2	302037	Dowel - Upper, Lower and Center	3
3	11-61	Gland	2
4	41-105	Packing Nut	2
5	300402	Taper Pin	2
6	376742	Oil Line	1
7	302811	Spacer	1
8	15-212	Washer	6
9	203249	Screw	2
10	25-242	Screw	8
11	19-191	Screw	3
12	203248	Plate	1
13	203235	Leaf Valve	1
14	21-167	Screw	11
15	130618	Screw	8
16	304348	Bracket - Port	1
17	21-124	Screw	4
18	301822	Clamp	2
19	304019	Grommet	1
20	203805	Lever	1
21	303737	Screw	2
22	303109	Bearing Clamp	2
23	21-167	Screw	11
24	302827	Spring	1
25	304714	Exhaust Cover - Outer	1
26	304716	Gasket	2
27	304715	Exhaust Cover - Inner	1
28	304442	Screw	3
29	303278	Support	1
30	303277	Retaining Ring	1
31	304688	Gasket	1
32	376813	Cylinder Head	1

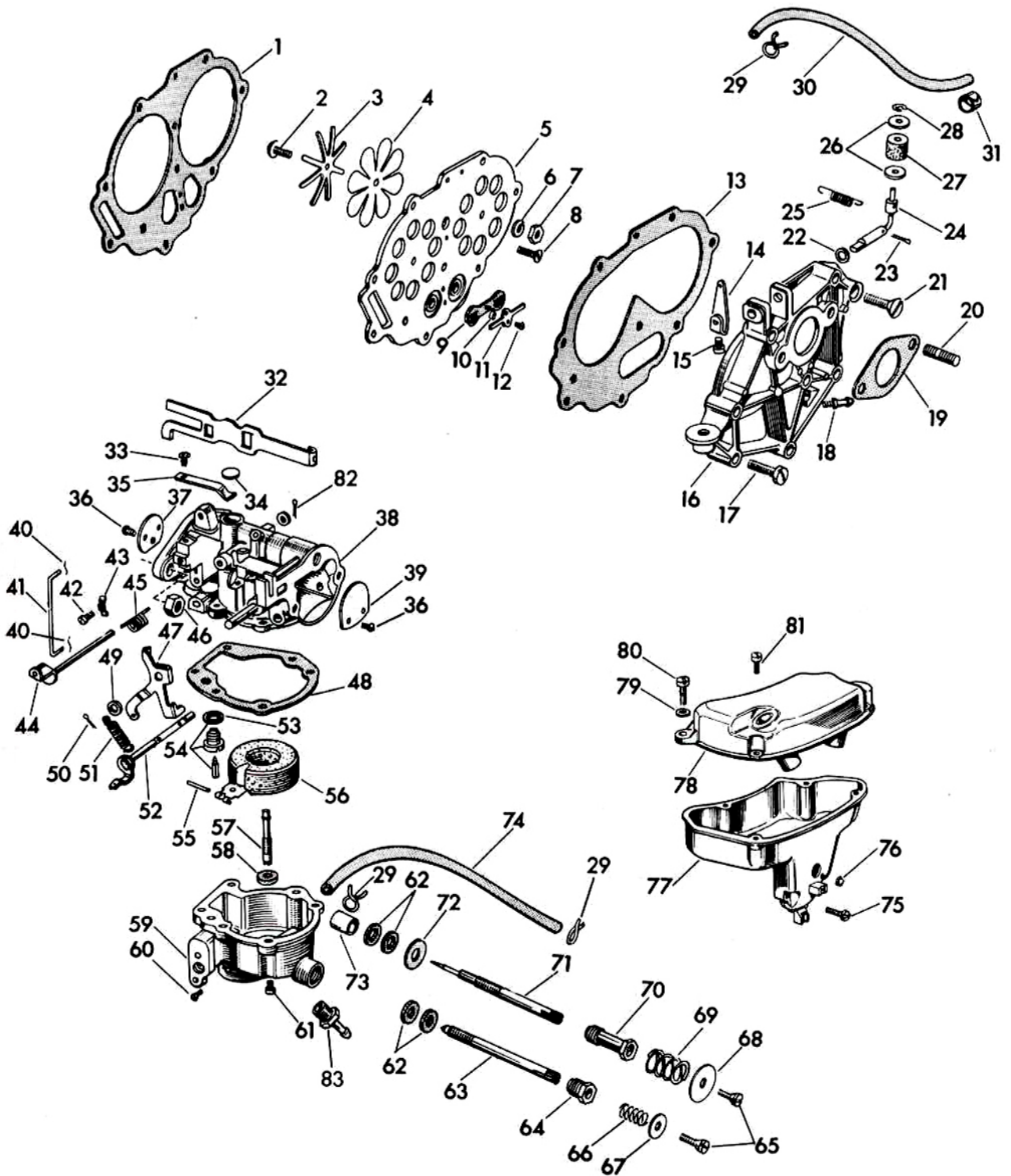
ITEM NO.	PART NO.	NAME OF PART	QTY. PER MOTOR
33	202310	Core Plug	2
34	*200322	Spark Plug - Champion J6J	2
34	*376290	Spark Plug - Auto Lite A3X	2
35	300454	Grommet	1
36	300455	Anchor	1
37	21-487	Screw	10
38	37-154	Washer	9
39	302587	Spring	1
40	303596	Shifter Lock	1
41	302592	Screw	1
42	304051	Washer	1
43	51-47	Screw	8
44	304781	Cover	2
45	304782	Gasket	2
46	304264	Bracket - Starboard	1
47	303922	Bumper	2
48	7-46	Nut	5
49	304155	Pin	1
50	21-167	Screw	3
51	303480	Lockwasher	1
52	{376836	Body & Nipple	1
52	{376835	Fuel Filter Assy.	1
53	304522	Stud	1
54	302675	Gasket	1
55	302062	Filter	1
56	304523	Nut	1
57	303967	Bowl	1
58	376327	Yoke & Screw	1
59	375989	Thumb Nut & Swivel Cup	1
60	302647	Clamp	4
61	203730	Hose - Filter to Carburetor	2

*We recommend either Champion or Auto-Lite Spark Plugs

NOTE

Gasket Set Part No. 277710

ORDER ALL PARTS FROM YOUR JOHNSON SEA-HORSE DEALER



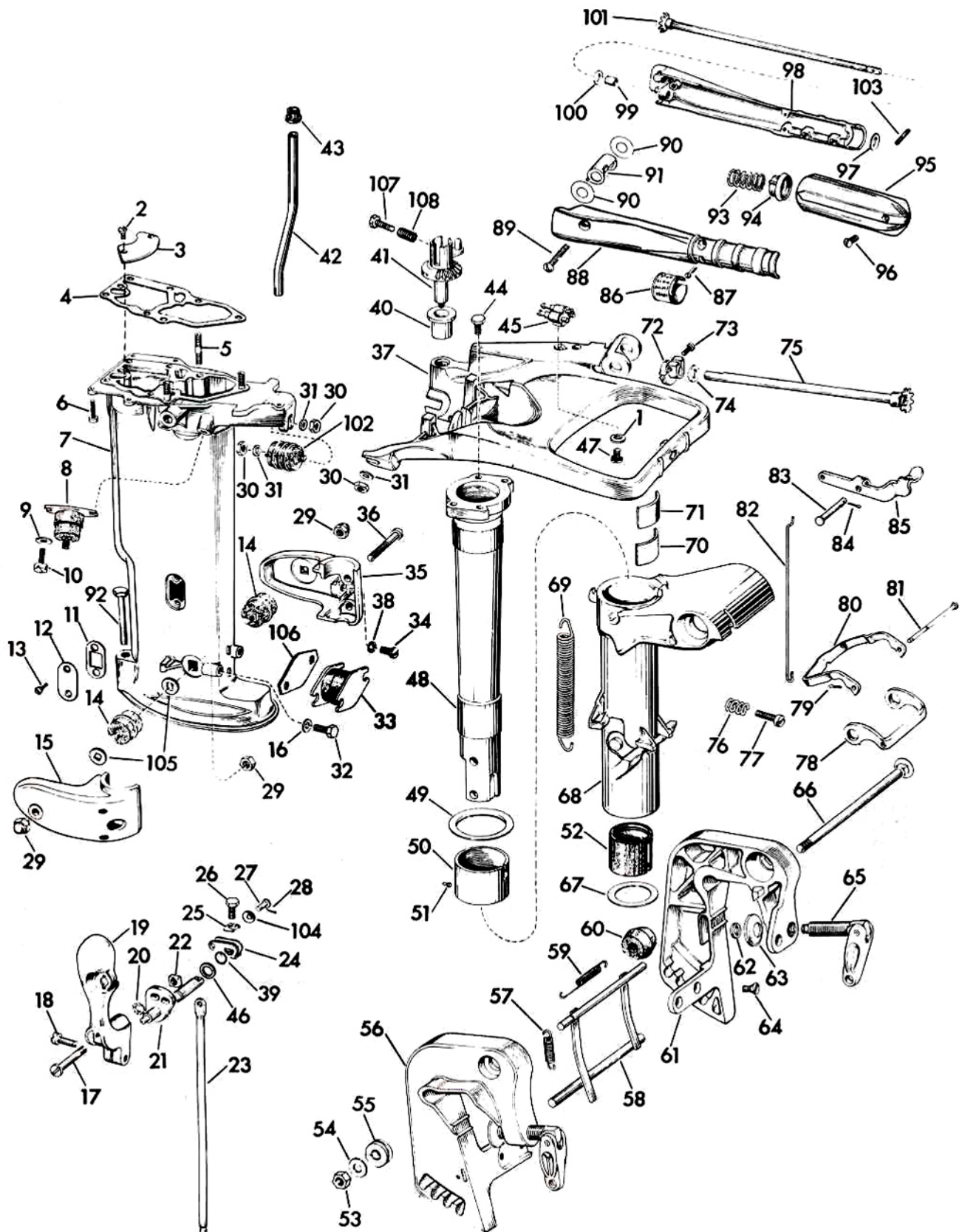
SPECIFY MODEL AND SERIAL NUMBER OF MOTOR WHEN ORDERING PARTS



ITEM NO.	PART NO.	NAME OF PART	QTY. PER MOTOR
1	304780	Gasket	1
2	301858	Screw	2
3	203234	Leaf Stop	2
4	203246	Leaf	2
5	203267	Leaf Plate	1
	277206	Leaf Plate Assembly	1
6	71-1487	Lockwasher	2
7	85-64	Nut	4
8	302104	Screw	1
9	302042	Check Valve	1
10	302046	Spacer	2
11	302048	Spring	1
12	19-191	Screw	3
13	304779	Gasket	1
14	376729	Arm & Screw Assembly	1
15	304572	Screw	1
16	277563	Manifold & Stud Assembly	1
17	130618	Screw	8
18	303172	Nipple	1
19	203237	Gasket	1
20	302822	Stud	2
21	304294	Screw	1
22	303048	Washer	1
23	41-163	Cotter Pin	3
24	304919	Cam Follower	1
25	203276	Spring	1
26	303279	Bushing	2
27	203362	Roller	1
28	203363	Retainer	1
29	302647	Clamp	4
30	203287	Hose - Air - Manifold to Connector	1
31	301822	Clamp	2
32	303143	Choke Rod	1
33	302430	Screw	1
34	202310	Expansion Plug	1
35	303132	Spring	1
36	303760	Screw	4
37	304937	Throttle Valve	1
38	376982	Carburetor Body, Valve & Bellcrank Shaft Assembly	1
	376855	Carburetor Assembly Complete	1
39	303126	Choke Valve	1
40	41-110	Pin	2
41	203727	Link	1

ITEM NO.	PART NO.	NAME OF PART	QTY. PER MOTOR
42	131249	Screw	1
43	303117	Bracket	1
44	376954	Throttle Shaft & Lever Assembly	1
45	303119	Spring	1
46	7-46	Nut	5
47	303144	Bellcrank	1
48	302994	Gasket	1
49	85-54	Washer	1
50	41-163	Cotter Pin	3
51	303316	Spring	1
52	375993	Choke Shaft & Lever Assembly	1
53	301996	Gasket	1
54	375985	Float Valve, Seat and Gasket Assembly	1
55	300096	Hinge Pin	1
56	375919	Float & Float Arm Assembly	1
57	304938	Nozzle	1
58	304940	Gasket	1
59	376965	Float Chamber & Nipple Assembly	1
60	303041	Screw	1
61	71-1589	Screw	5
62	43-123	Packing	4
63	304082	Needle Valve - High Speed	1
64	300179	Nut	1
65	551517	Screw	2
66	302993	Spring	1
67	202065	Washer	1
68	25-304	Washer	1
69	303548	Spring	1
70	303479	Nut	1
71	303945	Needle Valve - Slow Speed	1
72	203355	Washer	1
73	303947	Bushing	1
74	203730	Hose - Fuel Carb. to Filter	2
75	304889	Screw	2
76	203652	Button Plug	1
77	203728	Air Silencer - Lower	1
78	277437	Air Silencer - Upper	1
79	13-585	Washer	2
80	21-167	Screw	3
81	25-74	Screw	4
82	303049	Cotter Pin	2
83	303172	Nipple	1

ORDER ALL PARTS FROM YOUR JOHNSON SEA-HORSE DEALER



SPECIFY MODEL AND SERIAL NUMBER OF MOTOR WHEN ORDERING PARTS

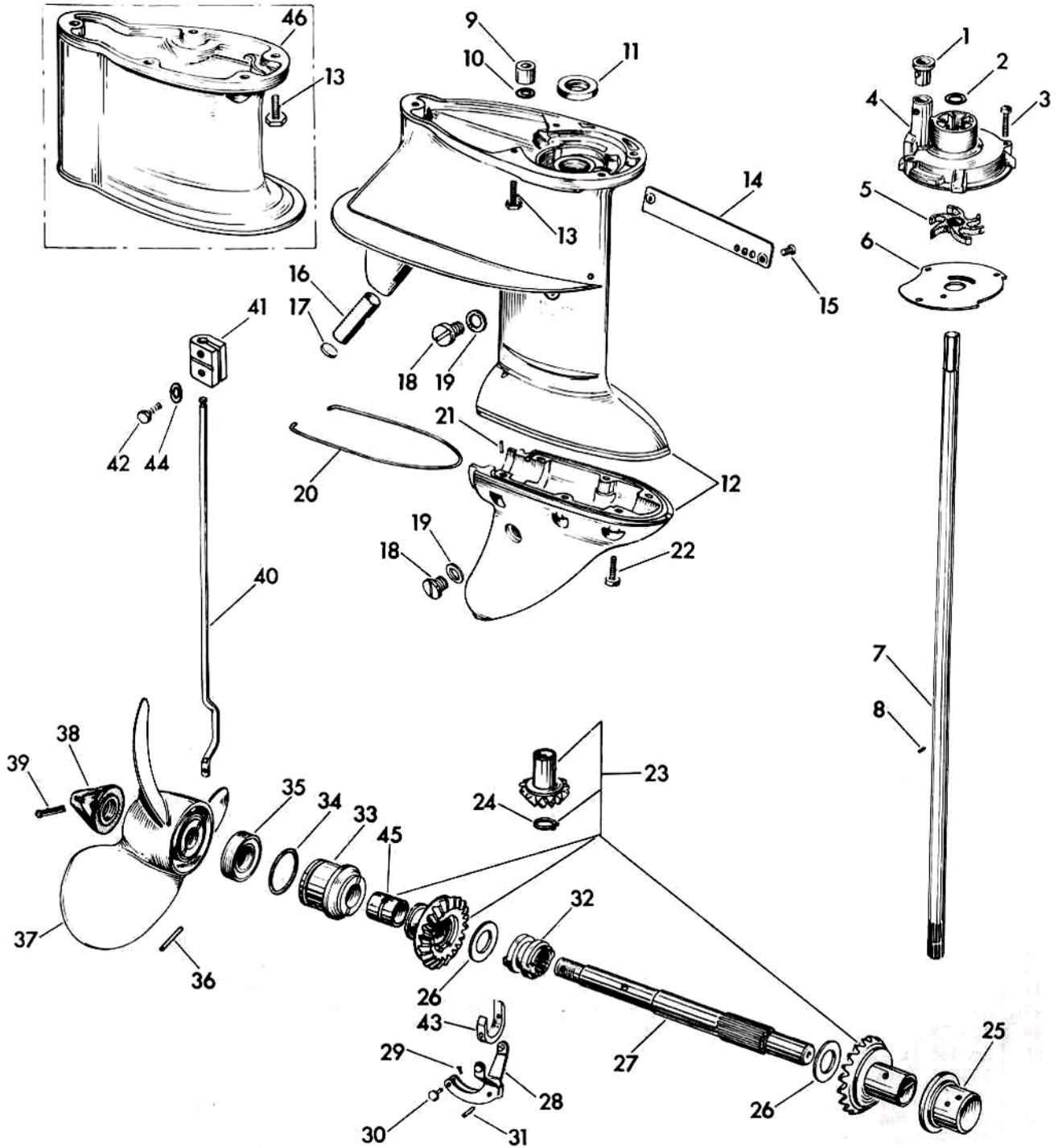


ITEM NO.	PART NO.	NAME OF PART	QTY. PER MOTOR
1	51-137	Lockwasher	1
2	25-74	Screw	6
3	304880	Plate	1
4	303892	Gasket	1
5	304517	Stud	3
6	25-238	Screw	5
7	376879	Exhaust Tube Assembly	1
8	303879	Rubber Mount - Upper Side	2
9	303887	Washer	4
10	39-176	Screw	4
11	304023	Gasket	1
12	303862	Cover Plate	1
13	302509	Screw	4
14	303880	Rubber Mount	2
15	303897	Housing - Starboard	1
16	303886	Washer	4
17	304817	Screw	1
18	300258	Screw	1
19	376520	Shift Lever and Pin Assy.	1
20	303480	Lockwasher	1
21	376921	Adjusting Lever Assy.	1
22	303189	Nut	1
23	304859	Shift Rod - Upper	1
24	304378	Lever	1
25	303721	Clip	1
26	303722	Screw	1
27	304377	Pin	1
28	15-268	Cotter Pin	3
29	303890	Acorn Nut	4
30	303889	Nut	4
31	303884	Washer	4
32	303888	Screw	2
33	303881	Rubber Mount	1
34	303883	Screw	2
35	303896	Housing - Port	1
36	303898	Screw	2
37	376837	Steering Bracket Assy.	1
38	303886	Washer	4
39	303191	O-Ring	1
40	303854	Bushing	1
41	304931	Gear	1
42	303917	Water Tube	1
43	302497	Grommet	2
44	21-171	Screw	4
45	375788	Fuel Connector Assy.	1
46	303775	Washer	1
47	21-359	Screw	1
48	303853	Pilot Shaft	1
49	303842	Thrust Washer	1
50	303846	Upper Liner	1
51	303696	Pin	1
52	303841	Shock Absorber	1
53	17-182	Nut	1
54	25-196	Washer	1
55	302051	Spring	1
56	376283	Stern Bracket Assembly - Starboard	1
57	202021	Spring	1
58	376312	Tilting Lever Assy.	1

ITEM NO.	PART NO.	NAME OF PART	QTY. PER MOTOR
59	304095	Spring	1
60	301983	Conical Washer	2
61	376284	Stern Bracket Assy. - Port	1
62	302420	Retainer	2
63	41-48	Swivel Plate	2
64	303396	Screw	2
65	375742	Clampscrew Assembly	2
66	301984	Bolt	1
67	303865	Thrust Washer	1
68	303840	Swivel Bracket	1
69	303979	Spring	1
70	303843	Spacer	1
71	303844	Plate	1
72	303142	Pinion	1
73	71-1352	Screw	1
74	303107	Washer	1
75	376692	Gear & Shaft Assy. - Short	1
76	551113	Spring	1
77	132679	Screw	1
78	303950	Link	1
79	15-268	Cotter Pin	3
80	303948	Locking Lever	1
81	303949	Rod	1
82	303978	Link	1
83	303930	Pivot Shaft	1
84	303049	Cotter Pin	2
85	303980	Arm	1
86	203260	Plate	1
87	133452	Screw	2
88	303093	Handle - Inner Half	1
89	303078	Screw	1
90	303079	Washer	2
91	303096	Cover	1
92	302871	Screw	1
93	301656	Spring	1
94	303282	Friction Block	1
95	304778	Grip	1
96	305001	Screw	1
97	303252	Washer	1
98	376042	Steering Handle Assy - Outer	1
99	302717	Bushing	1
100	302712	Washer	1
101	376691	Gear & Shaft Assy. - Long	1
102	304800	Rubber Mount - Upper - Front	1
103	300346	Groove Pin	1
104	304380	Bow Washer	1
105	304168	Gasket	4
106	304169	Gasket	1
107	304573	Screw	1
108	552368	Spring	1
MODEL FDL-11 PARTS THAT DIFFER FROM MODEL FD-11			
42	304037	Water Tube (FDL)	1
92	304135	Screw (FDL)	1
102	304801	Rubber Mount - Upper Front (FDL)	1

See Page 13 for additional Model FDL-11 parts

ORDER ALL PARTS FROM YOUR JOHNSON SEA-HORSE DEALER



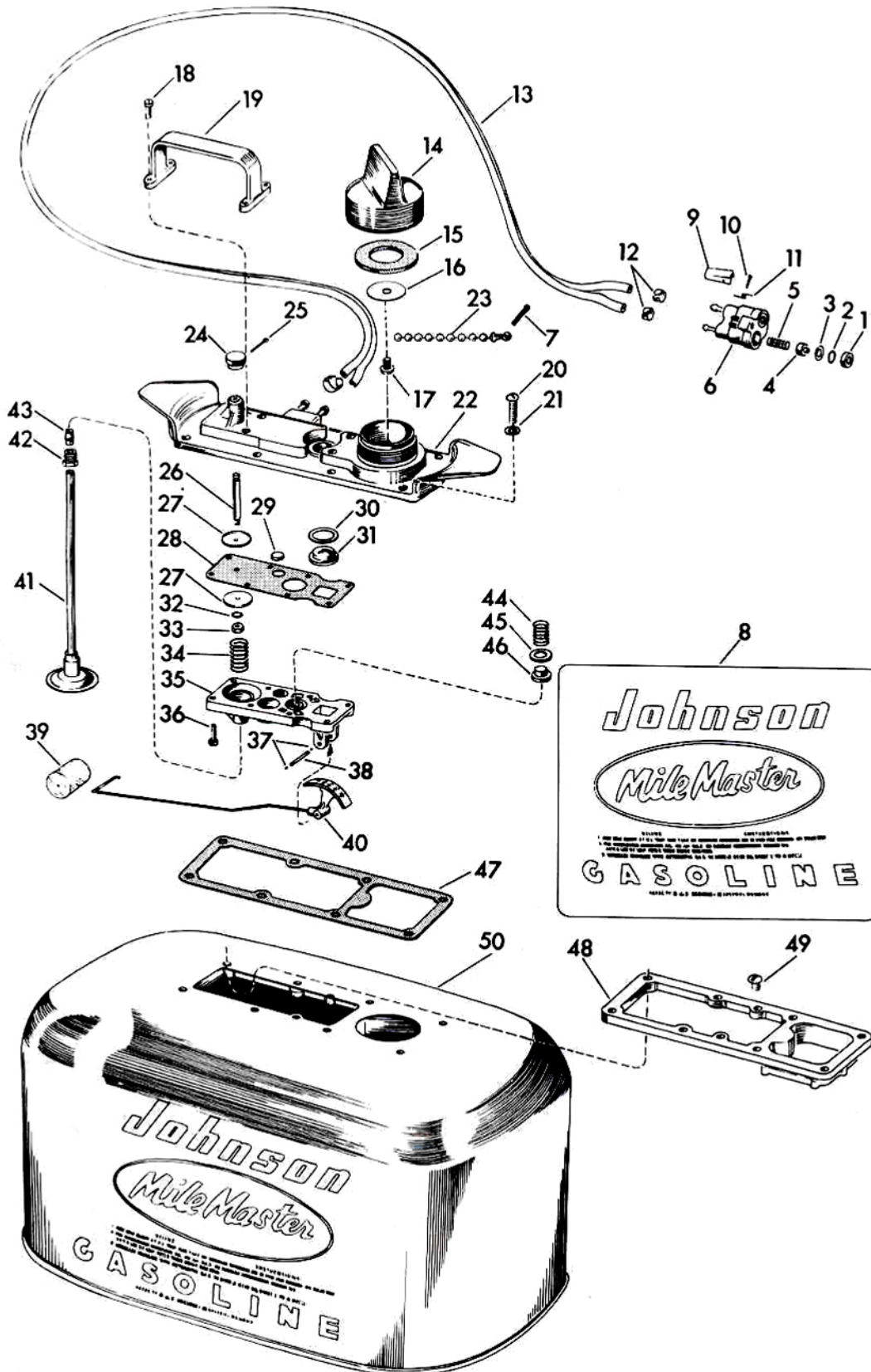
SPECIFY MODEL AND SERIAL NUMBER OF MOTOR WHEN ORDERING PARTS



ITEM NO.	PART NO.	NAME OF PART	QTY. PER MOTOR
1	302497	Grommet	2
2	303067	O-Ring	1
3	302508	Screw	3
4	303070	Impeller Housing	1
5	375638	Impeller Assembly	1
6	303069	Plate	1
7	303860	Driveshaft	1
8	300771	Pin	1
9	301878	Bushing	1
10	301877	O-Ring	1
11	41-62	Seal	1
12	376844	Gearcase and Bearing Assembly	1
13	302510	Screw	4
14	302505	Cover	1
15	302509	Screw	4
16	302757	Screen	1
17	300314	Plug	1
18	27-283	Screw	2
19	27-284	Gasket	2
20	302513	Seal	1
21	300611	Dowel	2
22	304070	Screw	6
23	376485	Pinion, Gears and Bushing Assembly	1
24	301883	Retaining Ring	1
25	302496	Bearing	1
26	301884	Thrust Washer	2
27	304265	Propeller Shaft	1
28	375755	Shifter Lever and Pin Assembly	1
29	15-268	Cotter Pin	3
30	302504	Pin	1
31	302501	Pivot Pin	1
32	375711	Shifter Assembly	1
33	376754	Gearcase Head Bearing and Seal Assembly	1
34	302493	O-Ring	1
35	302495	Seal	1
36	203663	Drive Pin	1
37	376805	Propeller and Bushing Assembly	1
38	376501	Propeller Nut	1
39	19-84	Cotter Pin	3
40	303098	Shift Rod - Lower	1
41	303794	Connector	1
42	304024	Screw	2
43	302500	Cradle	1
44	301551	Lockwasher	2
45	303997	Bushing	1
MODEL FDL-11 PARTS THAT DIFFER FROM MODEL FD-11			
7	304036	Driveshaft (FDL)	1
13	302510	Screw (FDL)	4
40	303257	Shift Rod (FDL)	1
46	304136	Gearcase Extension (FDL)	1

See Page 10 for additional Model FDL-11 parts

ORDER ALL PARTS FROM YOUR JOHNSON SEA-HORSE DEALER



SPECIFY MODEL AND SERIAL NUMBER OF MOTOR WHEN ORDERING PARTS



ITEM NO.	PART NO.	NAME OF PART	QTY. PER MOTOR
1	301828	Retainer	2
2	301824	O-Ring	2
3	301827	Washer	2
4	301826	Valve	2
5	301825	Spring	2
6	375587	Fuel Connector Assembly	1
7	15-213	Cotter Pin	1
8	304498	Transfer - Fuel Tank	1
9	301830	Lock	1
10	301832	Rivet	1
11	301829	Spring	1
12	301822	Hose Clamp	6
13	301821	Hose	1
14	375817	Filler Cap Assembly	1
15	301835	Gasket	1
16	302560	Plate	1
17	301837	Screw	1
18	13-558	Screw	14
19	302570	Handle	1
20	304137	Screw	8
21	301814	Gasket	8
22	376276	Housing	1
23	301838	Chain	1
24	301815	Push Button	1
25	17-186	Cotter Pin	1
26	302561	Push Rod	1
27	301800	Support	2
28	302563	Diaphragm	1
29	301802	Disc Valve	1
30	302571	Seal	1
31	302568	Glass	1
32	301736	Lockwasher	1
33	21-195	Nut	1
34	301803	Spring	1
35	302555	Housing	1
36	13-558	Screw	14
37	302654	Snap Ring	2
38	302653	Pin	1
39	302559	Float	1
40	375778	Indicator Assembly	1
41	375846	Foot Valve Assembly	1
42	132691	Nut	1
43	13-304	Gland	1
44	302135	Spring	1
45	302137	Washer	1
46	302136	Valve	1
47	302557	Gasket	1
48	302556	Support	1
49	53-85	Screw	2
50	{ 375774	Fuel Tank (Only)	1
	{ 375777	Fuel Tank Assembly Complete	1

NOTE
Mile Master Fuel Tank Gasket Set
Part No. 376455

WARRANTY

We warrant each new outboard motor of our manufacture to be free from defects in material and workmanship under normal use and service, our obligation under this warranty being limited to making good at the factory any part or parts thereof which shall, within three months after initial use, or within one year from date of original purchase, whichever first occurs, be returned to us with transportation charges prepaid, and which our examination shall disclose to our satisfaction to have been thus defective; this warranty being expressly in lieu of all other warranties and representations expressed or implied and of all other liabilities in connection with the sale or use of any motors.

This warranty shall not apply to any motor which shall have been repaired or altered outside the factory in any way so as to affect its stability, nor which has been subject to misuse, negligence or accident, or operated for racing purposes or operated in any other way than in accordance with our operating instructions. Nor does the warranty extend to repairs made necessary by the use of accessories not recommended by Johnson Motors.

We make no warranty in respect to trade accessories not of our manufacture, inasmuch as they are usually warranted separately by their respective manufacturers.

To make a claim under this warranty, contact the dealer from whom motor was originally purchased or the nearest authorized Johnson dealer. Motors or parts thereof shipped to the factory for our inspection must show model and serial numbers, and must be shipped transportation charges prepaid.

Outboard Marine *Corporation of Canada Ltd.*
PETERBOROUGH — CANADA