

PARTS CATALOG

FOR

Model TN-28

5.0

1952 to 1953



JOHNSON MOTORS

Waukegan, Illinois, U. S. A.

Warranty

We warrant each new outboard motor of our manufacturer to be free from defects in material and workmanship under normal use and service, our obligation under this warranty being limited to making good at the factory any part or parts thereof which shall, within three (3) months after delivery of such motor to original purchasers, be returned to us with transportation charges prepaid, and which our examination shall disclose to our satisfaction to have been thus defective; this warranty being expressly in lieu of all other warranties and representations expressed or implied and of all other liabilities in connection with the sale or use of any motors.

This warranty shall not apply to any motor which shall have been repaired or altered outside the factory in any way so as to affect its stability, nor which has been subject to misuse, negligence or accident. Warranty is void if motor is used for racing purpose.

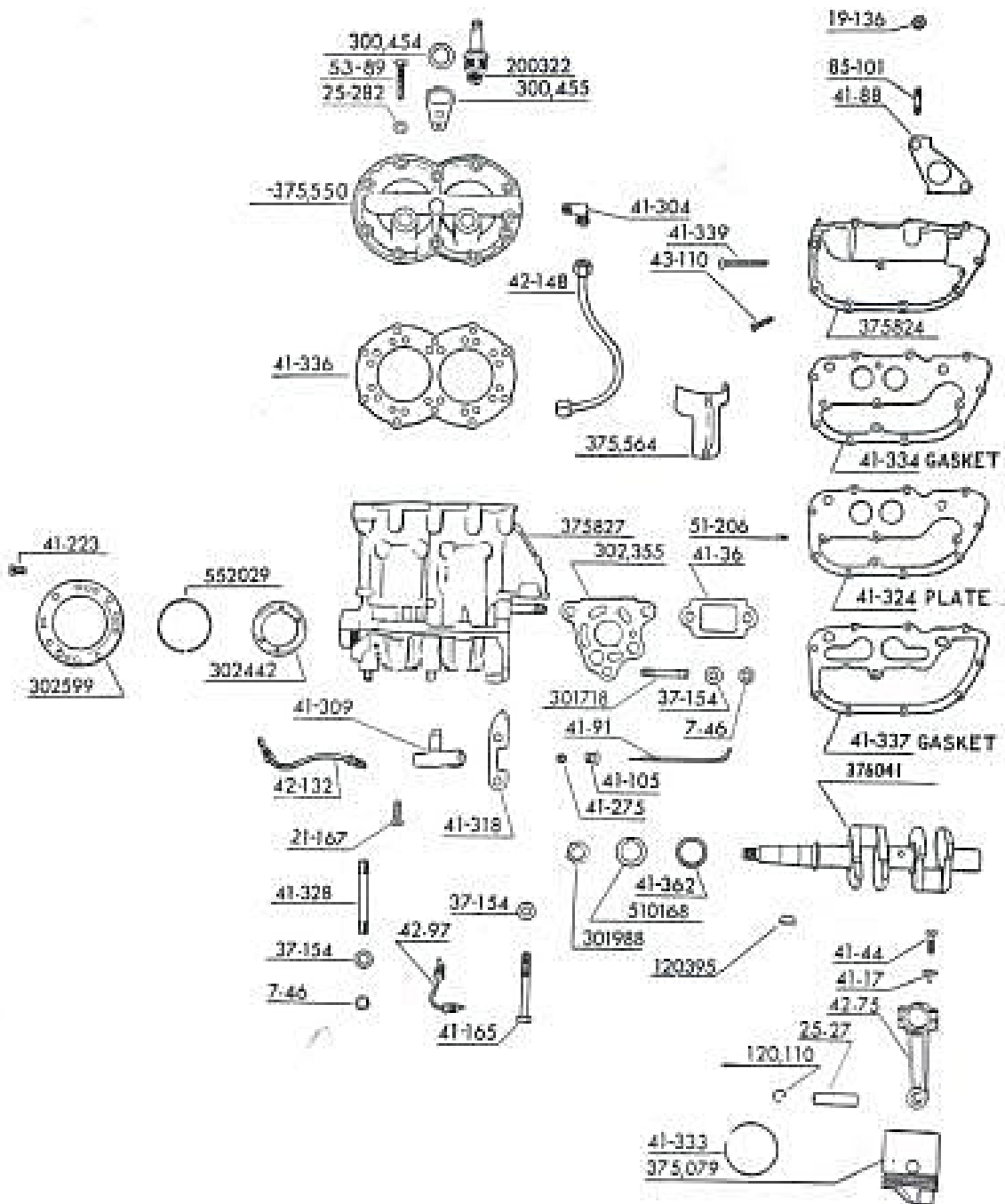
We make no warranty in respect to trade accessories not of our manufacture; inasmuch as they are usually warranted separately by their respective manufacturers.

Because of the usual strains and accidents to which such products may be subjected, we make no warranty of either material or workmanship in racing outboard motors or any of our products when used for racing.

Claims must be entered on motors or motor parts returned to the factory for inspection, repair or replacement. Request form No. SE-16 from local Johnson Dealer or Service Station. This form should be filled in, signed by the motor owner and dealer or service station representatives and mailed to the factory with returned material, **TRANSPORTATION CHARGES PREPAID.**

Always Give Part Number and Motor Number

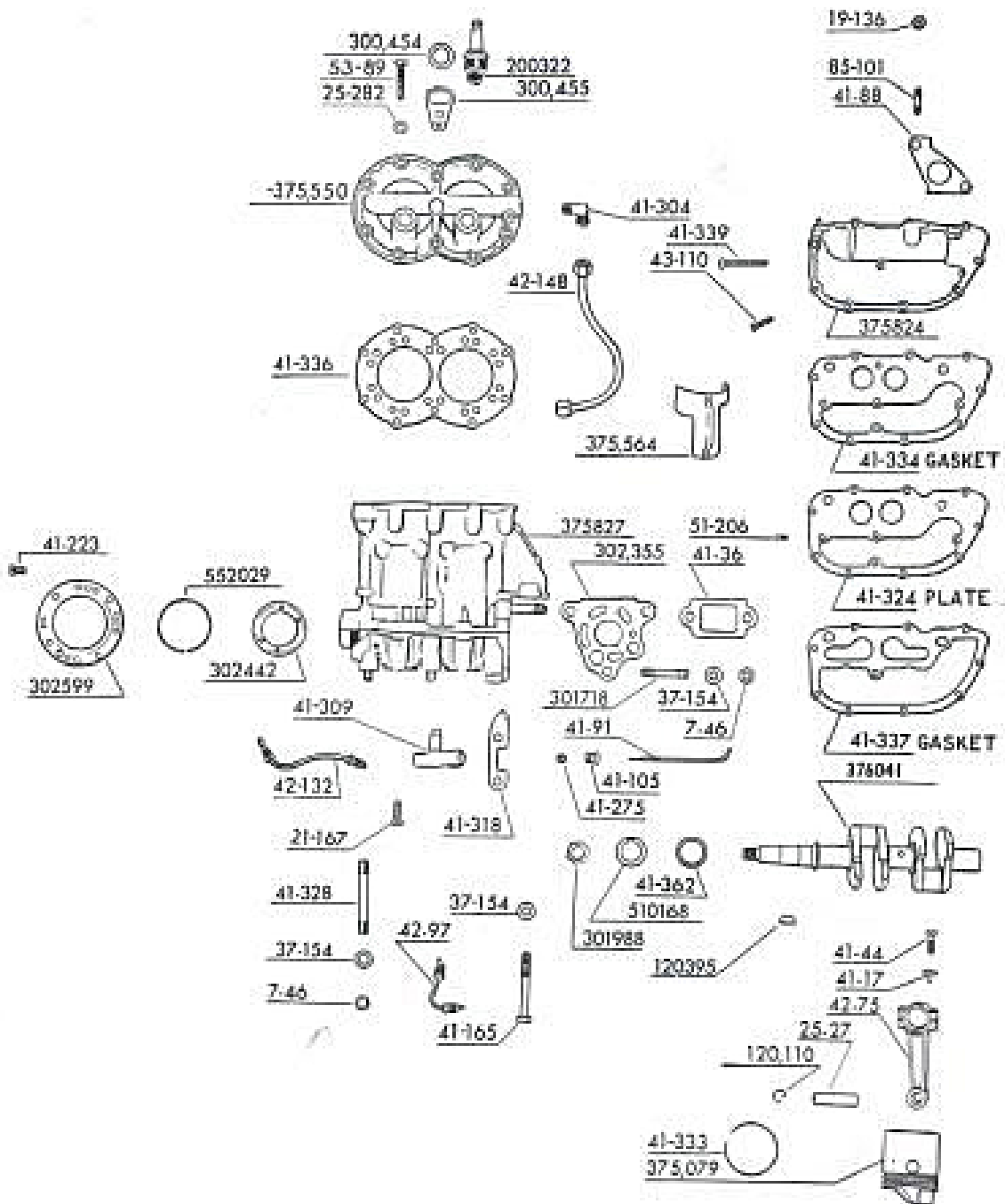
POWER HEAD PARTS



Order All Parts from Nearest Service Station or Dealer

Always Give Part Number and Motor Number

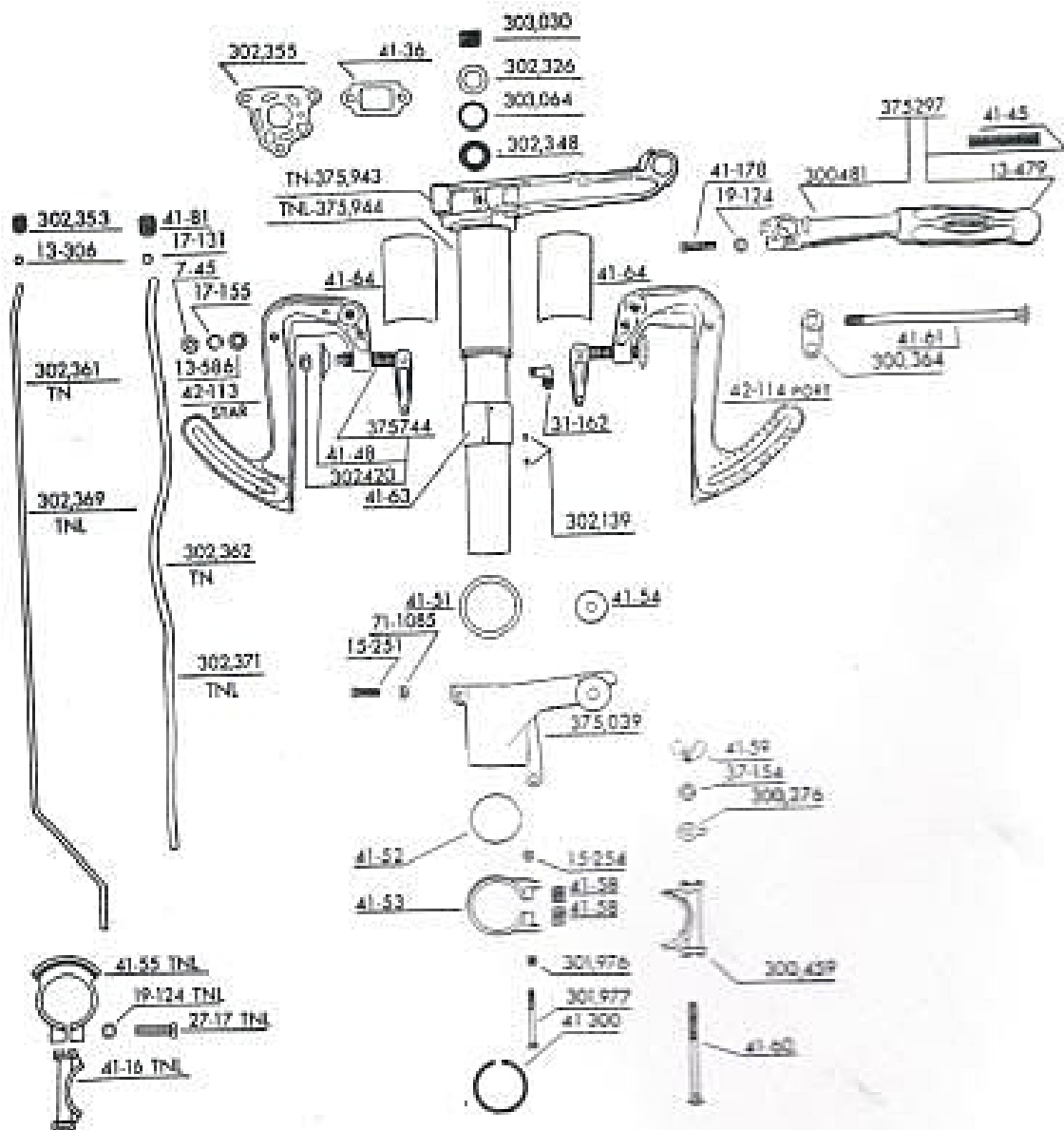
POWER HEAD PARTS



Order All Parts from Nearest Service Station or Dealer

Always Give Part Number and Motor Number

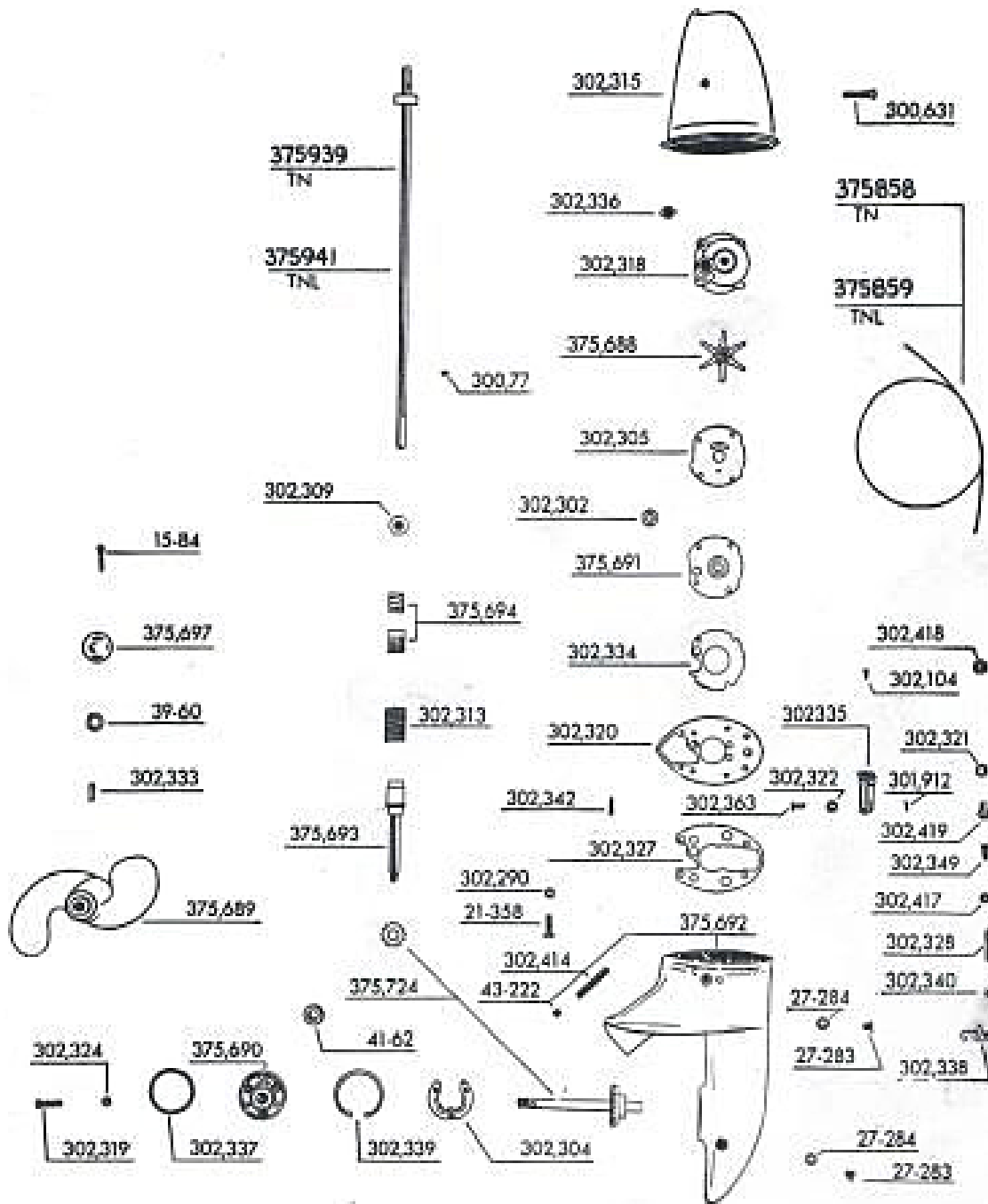
LOWER UNIT PARTS



Order All Parts from Nearest Service Station or Dealer

Always Give Part Number and Motor Number

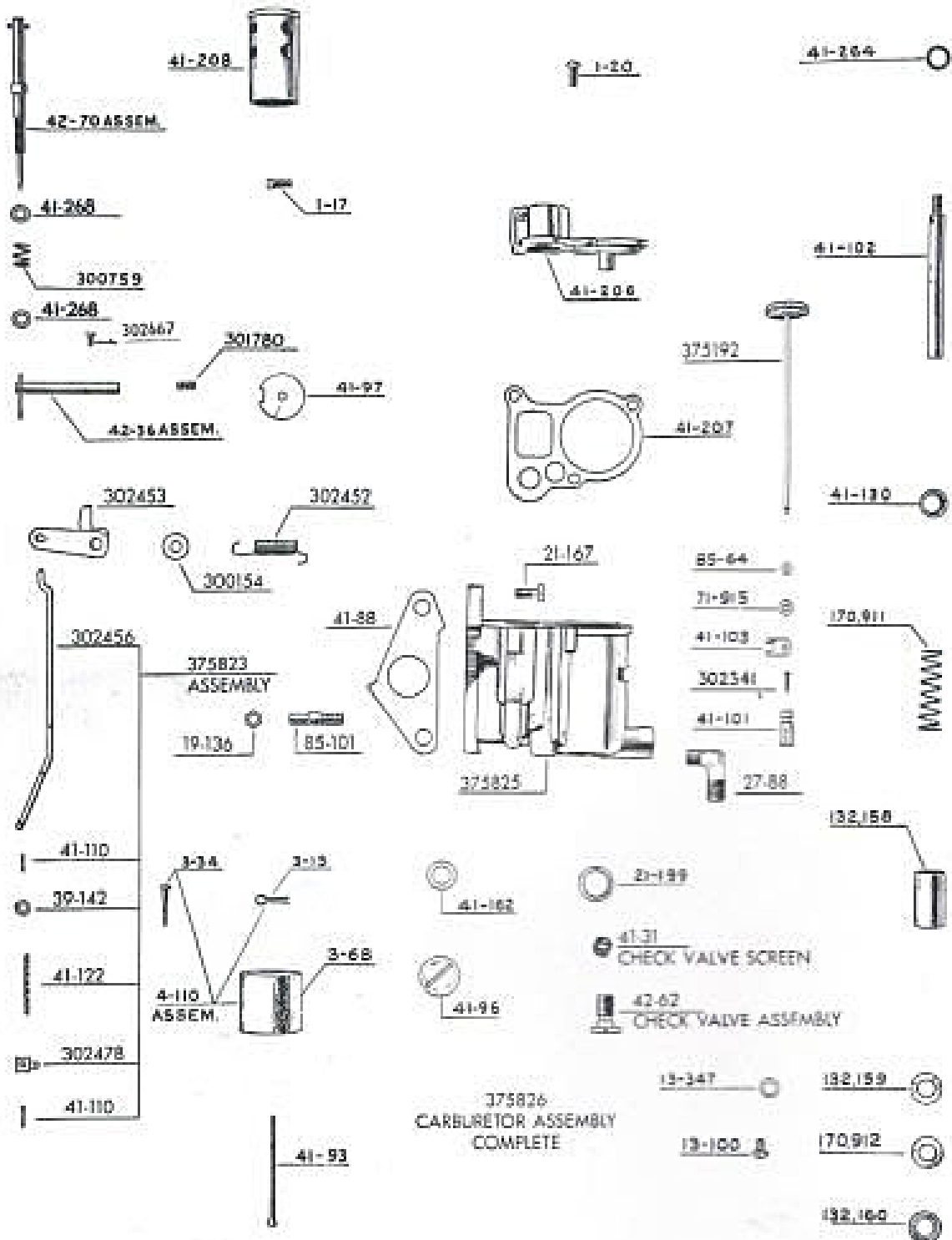
LOWER UNIT PARTS



Order All Parts from Nearest Service Station or Dealer

Always Give Part Number and Motor Number

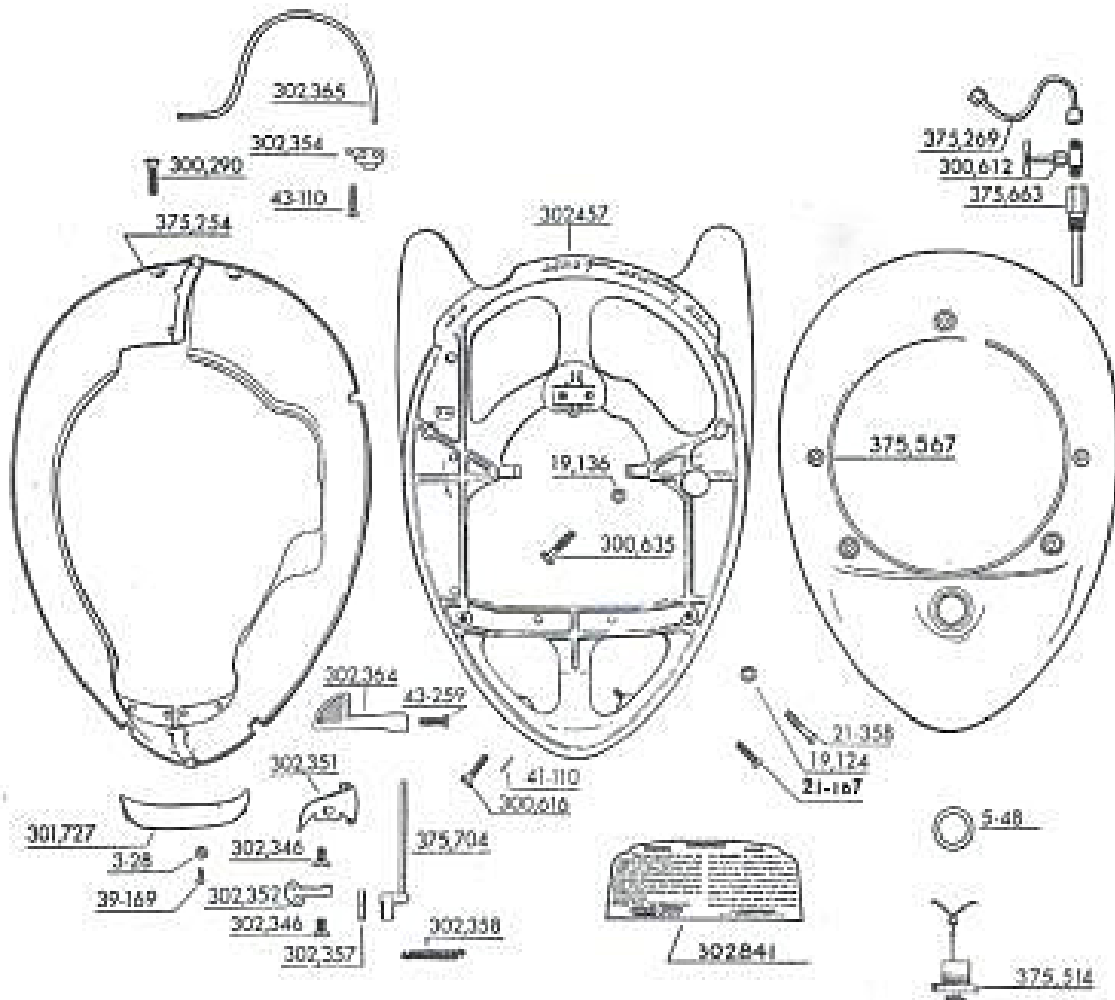
CARBURETOR PARTS



Order All Parts from Nearest Service Station or Dealer

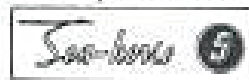
Always Give Part Number and Motor Number

GAS TANK, SHROUD, MOUNTING PLATE AND TRANSFERS



302849
PORT

303186
PORT & STAR

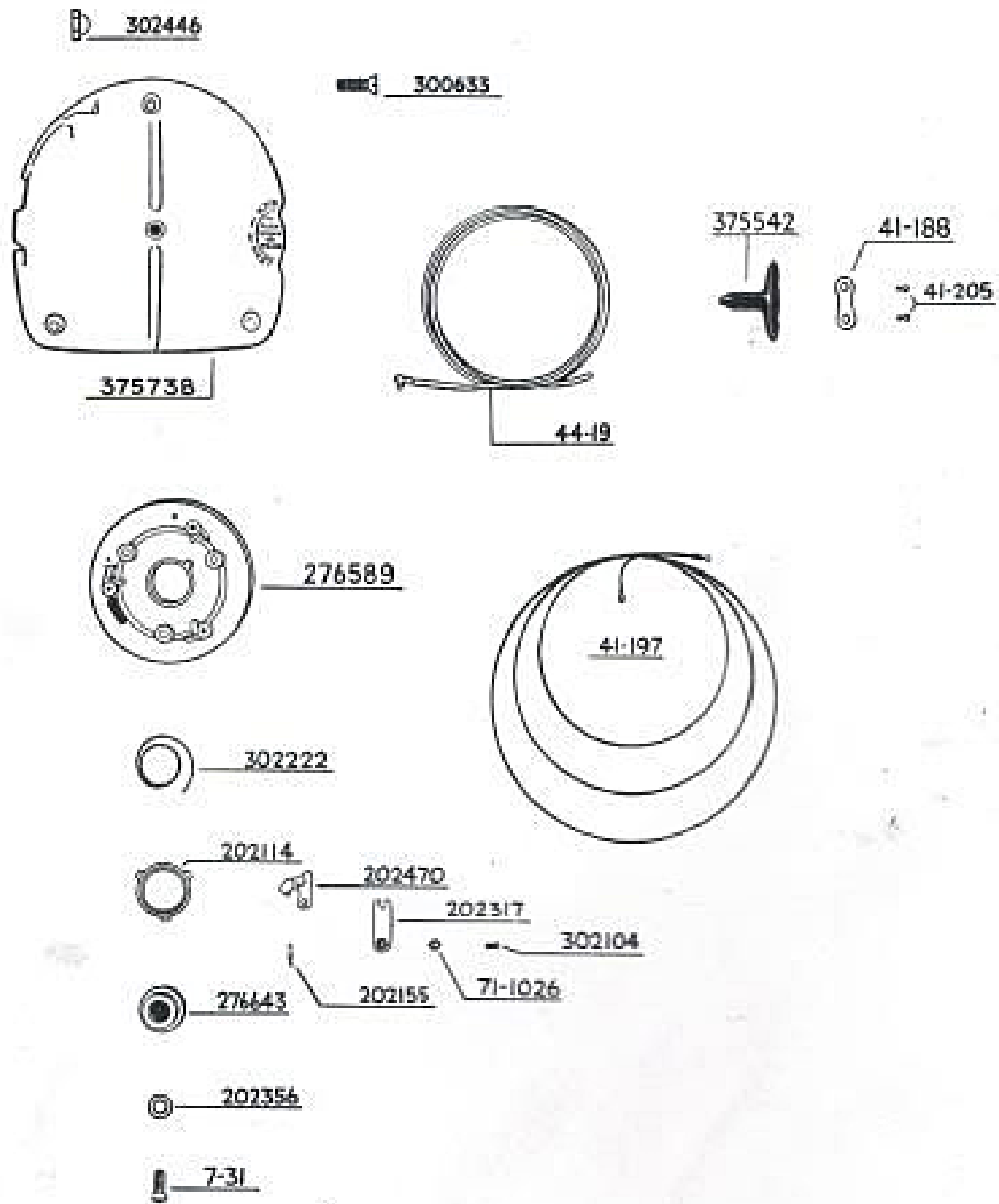


302852
STAR

Order All Parts from Nearest Service Station or Dealer

Always Give Part Number and Motor Number

STARTER PARTS

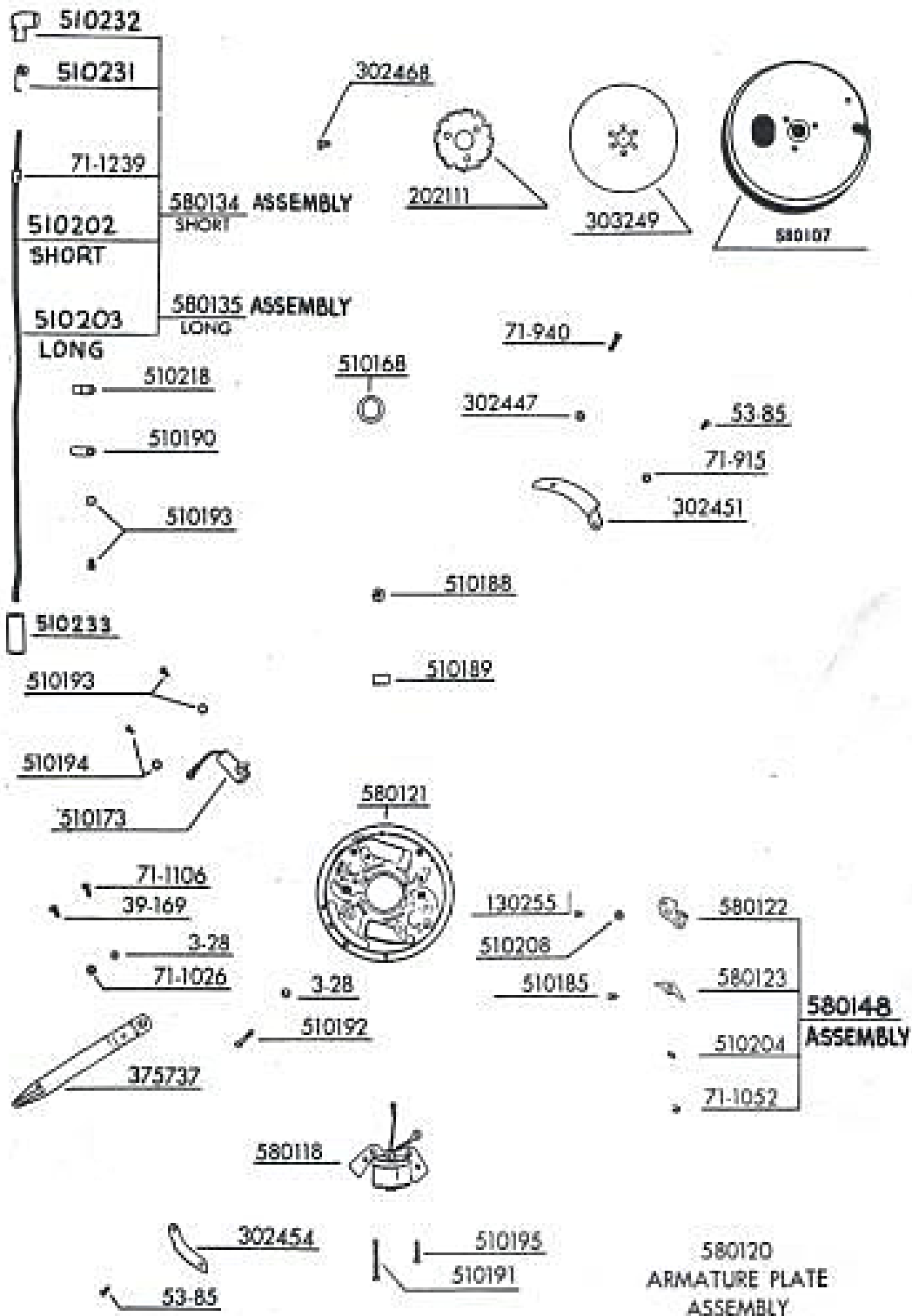


STARTER ASSEMBLY COMPLETE - 375828

Order All Parts from Nearest Service Station or Dealer

Always Give Part Number and Motor Number

MAGNETO PARTS



Order All Parts from Nearest Service Station or Dealer

Always Give Part Number and Motor Number

PART NO. 1-17 TO 41-51 INC.

Part No.	No. Required per Motor	NAME OF PART
1-17	1	Set Screw - Air Silencer.....
1-20	3	Screw - Carburetor Cover.....
3-15	1	Cotter Pin - Float.....
3-28	7	Lockwasher - Timing Lever Screw - Retaining Ring Mounting - Carrying Handle to Side Cover Screw.....
3-34	1	Wood Screw - Float.....
3-68	1	Float - Carburetor.....
4-110	1	Float Assembly - Carburetor.....
5-48	1	Gasket - Filler Cap.....
7-31	1	Screw - Spindle to Starter Housing.....
7-45	1	Nut - Tilting Shaft.....
7-46	9	Nut - Crankcase to Flange and Steering Bracket - Cylinder to Crankcase.....
11-61	2	Gland - Oil Line.....
13-100	2	Screw - Carburetor Drain.....
13-306	5	Gland - Slow Speed and High Speed Gasoline Line - Control Cable Tube to Flange.....
13-307	2	Nut - High Speed Gas Line.....
13-347	3	Washer - Jet and Drain Screw.....
13-479	1	Grip - Steering Handle.....
13-586	1	Washer - Tilting Shaft Nut.....
15-84	1	Cotter Pin - Propeller Nut.....
15-251	1	Screw - Swivel Bracket.....
15-254	1	Nut - Pilot Screw.....
17-131	3	Gland - Water Pipe.....
17-132	2	Nut - Water Pipe.....
17-155	1	Lockwasher - Tilting Shaft Nut.....
19-124	6	Lockwasher - Steering Handle Screw, Gas Tank Mounting (Reverse Lock Screw TNL).....
19-126	3	Nut - Carburetor Stud and Mounting Plate to Crankcase.....
21-167	7	Screw - Carburetor Flange to Muffler and Cylinder to Crankcase and Mounting Plate to Cylinder.....
21-199	1	Gasket - Check Valve.....
21-358	8	Screw - Gas Tank to Mounting Plate - Upper to Lower Gearcase.....
25-37	2	Wrist Pin.....
25-282	10	Washer - Cylinder Head Screws.....
27-17	1	Screw - Reverse Lock (TNL).....
27-88	1	Elbow - Carburetor Gas Line.....
27-288	2	Screw - Oil Plug - Fill and Drain.....
27-284	2	Washer - Oil Plug - Fill and Drain.....
27-308	2	Nut - Slow Speed Gas Line.....
31-142	1	Elbow - Water Pipe.....
37-154	12	Washer - Cylinder to Crankcase Studs - Thrust Socket Bolt Nut End and Flange to Crankcase.....
39-60	1	Lockwasher - Propeller Nut.....
39-142	1	Washer - Control Rod.....
39-169	5	Screw - Carrying Handle to Side Covers - Timing Lever.....
41-16	1	Thrust Socket (TNL).....
41-17	4	Lockplate - Connecting Rod Screws.....
41-31	1	Screw - Check Valve.....
41-36	1	Gasket - Cylinder to Flange.....
41-44	4	Screw - Connecting Rod.....
41-45	1	Spring - Steering Handle.....
41-48	2	Swivel Plate.....
41-51	1	Thrust Washer - Swivel Bracket.....

Order All Parts from Nearest Service Station or Dealer

Always Give Part Number and Motor Number

PART NO. 41-52 TO 43-128 INC.

Part No.	No. Required per Motor	NAME OF PART
41-52	1	Lining - Pilot Band.....
41-53	1	Pilot Band.....
41-54	2	Thrust Washer.....
41-55	1	Reverse Lock (TNL).....
41-58	2	Spring - Pilot Band.....
41-59	1	Wing Nut - Thrust Socket Bolt.....
41-60	1	Thrust Socket Bolt.....
41-61	1	Bolt - Tilting Shaft.....
41-62	1	Grease Retainer - Gearcase Head.....
41-63	1	Lining - Thrust Socket.....
41-64	2	Lining - Swivel Bracket.....
41-81	1	Nut - Water Pipe - Upper.....
41-88	1	Gasket - Carburetor Flange.....
41-91	1	Needle Valve - Slow Speed.....
41-93	1	Float Pin.....
41-96	1	Screw - Plug for Float Valve.....
41-97	1	Throttle Valve.....
41-101	1	Sleeve - Needle Valve.....
41-102	1	Plunger.....
41-103	1	Fork - Plunger.....
41-105	3	Nut - Oil Line - Slow Speed Needle Valve.....
41-110	5	Pin - Side Cover Screw - Swivel Control - Control Rod.....
41-122	1	Spring - Control Rod.....
41-130	1	Cup - Plunger.....
41-162	1	Washer - Plug for Float Valve.....
41-165	2	Screw - Flange to Cylinder.....
41-166	3	Groove Pin - High Speed Needle Valve - Plunger.....
41-178	1	Screw - Steering Handle.....
41-188	1	Plate - Rope Handle.....
41-197	1	Main Starter Spring.....
41-205	2	Screw - Clamp Plate to Handle.....
41-206	1	Cover - Carburetor.....
41-207	1	Gasket - Carburetor Cover.....
41-208	1	Air Silencer - Carburetor.....
41-219	1	Wrench.....
41-223	4	Screw - Armature Plate Support.....
41-264	1	Washer - Pump Plunger.....
41-268	2	Washer - Needle Valve Spring.....
41-275	3	Packing - Slow Speed Needle Valve.....
41-300	1	Snap Ring - Flange and Steering Bracket.....
41-304	1	Elbow - Water Tube.....
41-309	1	Slow Speed Intake.....
41-318	1	Support - Slow Speed Needle.....
41-324	1	Plate - Muffler to Cylinder.....
41-328	6	Stud - Cylinder to Crankcase.....
41-333	6	Piston Rings.....
41-334	1	Gasket - Plate to Muffler.....
41-336	1	Gasket - Cylinder Head.....
41-337	1	Gasket - Plate to Cylinder.....
41-339	1	Screw - Muffler - Long.....
41-340	1	Socket Wrench.....
41-362	1	Oil Slinger.....
42-36	1	Throttle Arm and Shaft Assembly.....
42-62	1	Check Valve Assembly.....
42-70	1	Needle Valve - High Speed.....
42-75	2	Connecting Rod and Lockplate Assembly.....
42-97	1	Oil Line Assembly.....
42-113	1	Stern Bracket and Clamp Screw Assembly - Star.....
42-114	1	Stern Bracket and Clamp Screw Assembly - Port.....
42-132	1	Gasoline Line Assembly - Slow Speed.....
42-147	2	Piston, Connecting Rod and Ring Assembly.....
43-148	1	Water Line Assembly - Outlet.....
43-110	11	Screw - Muffler - Short - Cap to Mounting Plate.....
43-128	1	Feeler Gauge.....

Order All Parts from Nearest Service Station or Dealer

Always Give Part Number and Motor Number

PART NO. 43-222 TO 302222 INC.

Part No.	No. Required per Motor	NAME OF PART
43-222	1	Plug - Gearcase - Lower.....
43-252	1	Handle - Socket Wrench.....
43-259	1	Screw - Control Handle to Shaft.....
44-19	1	Starter Cord and Anchor Assembly.....
51-206	4	Screw - Muffler to Plate.....
53-85	3	Screw - Stop to Armature Plate and Throttle Cam.....
53-89	10	Screw - Cylinder Head to Cylinder.....
71-015	2	Lockwasher - Plunger Nut - Throttle Cam Screw.....
71-940	1	Screw - Throttle Cam.....
71-1026	4	Lockwasher - Retainer Screw - Timing Lever Screw.....
71-1052	2	Spring Clip - Breaker Post.....
71-1085	1	Spring - Swivel Bracket.....
71-1106	1	Screw - Timing Lever.....
71-1239	1	Marker - High Tension Lead Assembly - Upper.....
85-44	1	Nut - Plunger to Fork.....
85-101	1	Stud - Carburetor to Cylinder.....
120119	4	Lockring - Wrist Pin.....
120595	1	Key - Crankshaft.....
120255	2	Screw - Breaker Mounting.....
122158	1	Sleeve - Plunger.....
122159	1	Packing Washer - Top.....
122160	1	Packing Washer - Bottom.....
170911	1	Spring - Plunger.....
170912	2	Packing Washer - Leather.....
200222	2	Spark Plug.....
202111	1	Ratchet - Starter.....
202114	1	Equalizer Cup - Starter.....
202155	3	Spring - Equalizer Cup - Starter.....
202317	3	Retainer - Starter Pawl.....
202356	1	Washer - Starter Spindle.....
202470	3	Starter Pawl.....
276589	1	Starter Pulley.....
276643	1	Spindle and Pin Assembly.....
300154	1	Washer - Cam Lever Pin.....
300276	1	Lockplate - Port - Stern Bracket.....
300290	2	Screw - Side Cover to Mounting Plate - Front.....
300364	1	Link - Safety Chain.....
300454	1	Grommet - Ignition Lead.....
300455	1	Anchor - Ignition Lead.....
300459	1	Thrust Socket.....
300481	1	Steering Handle.....
300612	1	Shut-off Valve.....
300616	2	Screw - Side Cover to Mounting Plate.....
300631	1	Clamp Screw - Gearcase.....
300633	3	Screw - Starter Housing to Gas Tank.....
300635	2	Screw - Mounting Plate to Crankcase.....
300759	1	Spring - High Speed Needle.....
300771	1	Pin - Impeller to Driveshaft.....
301718	3	Stud - Crankcase to Flange and Steering Bracket.....
301727	1	Carrying Handle.....
301780	1	Spring - Throttle Arm.....
301912	1	Cotter Pin - Pivot Pin.....
301967	1	O Ring - Crankshaft Seal - Lower.....
301976	1	Spring - Pilot Band.....
301977	1	Screw - Pilot Band.....
301988	1	Nut - Crankshaft.....
302104	5	Screw - Retainer to Starter Pulley - Plate to Clutch Lever Bracket.....
302139	2	Rivet - Lining Thrust Socket.....
302222	1	Friction Spring - Starter.....

Order All Parts from Nearest Service Station or Dealer

Always Give Part Number and Motor Number

PART NO. 302290 TO 302849 INC.

Part No.	No. Required per Motor	NAME OF PART
302290	4	Lockwasher - Upper to Lower Gearcase Screw.....
302302	1	Seal - Bearing Housing.....
302304	1	Nut Plate - Gearcase Head.....
302305	1	Plate - Impeller Housing.....
302309	1	Retainer - Clutch.....
302313	1	Spring - Clutch.....
302315	1	Gearcase - Upper.....
302318	1	Impeller Housing.....
302319	3	Screw - Gearcase Head.....
302320	1	Plate - Lower to Upper Gearcase.....
302321	1	Gasket - Plat to Seal Housing.....
302322	1	Bow Washer - Pivot Pin - Clutch Lever.....
302324	3	Washer - Gearcase Head Screw.....
302324	1	Washer - Crankshaft Seal - Lower.....
302327	1	Gasket - Lower Gearcase to Plate.....
302328	1	Spring - Clutch Lever.....
302333	1	Drive Pin.....
302334	1	Gasket - Bearing Housing to Plate.....
302335	1	Bracket - Clutch Lever.....
302336	1	Grommet - Water Tube to Impeller Housing.....
302337	1	O Ring - Gearcase Head.....
302338	1	Lever - Clutch.....
302339	1	Retainer Ring - Gearcase Lower.....
302340	1	Washer - Spring to Clutch Lever.....
302341	1	Screw - Sleeve to Adjustment Rod.....
302343	4	Screw - Plate to Impeller Housing.....
302346	3	Screw - Control Cable Clamp and Lock to Control Shaft.....
302348	1	Seal - Crankshaft - Lower.....
302349	1	Grommet - Lower Gearcase.....
302351	1	Lock - Control Shaft.....
302352	1	Clamp - Control Cable.....
302353	1	Nut - Control Cable Tube to Flange.....
302354	1	Cap - Upper Control Tube to Mounting Plate.....
302355	1	Gasket - Power Head to Lower Unit.....
302357	1	Pin - Lever to Cable Clamp.....
302358	1	Spring - Cable Clamp Pin to Cap.....
302361	1	Tube - Control Cable - Lower.....
302362	1	Water Tube - Inlet.....
302363	1	Pivot Pin - Clutch Lever.....
302364	1	Control Handle.....
302365	1	Tube - Control Cable - Upper.....
302369	1	Tube - Control Cable - Lower (TNL).....
302371	1	Water Tube - Inlet (TNL).....
302414	1	Screen - Water Intake.....
302417	1	Washer - Grommet to Clutch Lever Spring.....
302418	1	Nut - Guide Screw.....
302419	1	Guide Screw - Control Cable Tube.....
302420	2	Retainer - Swivel Plate.....
302442	1	Retaining Ring - Armature Plate.....
302446	1	Nut - Starter - Acorn.....
302447	1	Spacer - Cam Mounting.....
302451	1	Throttle Cam - Armature Plate.....
302452	1	Spring - Cam Lever.....
302453	1	Cam Lever - Carburetor.....
302454	1	Stop - Control Lever Lock - Armature Plate.....
302456	1	Control Rod - Cam Lever to Throttle Arm.....
302457	1	Mounting Plate.....
302468	3	Screw - Ratchet to Dome.....
302478	1	Swivel - Control Rod to Throttle Arm.....
302599	1	Support - Armature Plate.....
302667	1	Screw - Stem to Throttle.....
302841	1	Transfer - Oiling and Starting Instructions.....
302849	1	Transfer - Port.....

Order All Parts from Nearest Service Station or Dealer

Always Give Part Number and Motor Number

PART NO. 302852 TO 510232 INC.

Part No.	No. Required per Motor	NAME OF PART
302852	1	Transfer - Star.....
303030	1	Spring - Crankshaft Seal - Lower.....
303064	1	O-Ring - Crankshaft Seal - Lower.....
303186	2	Transfer - Sea Horse 5 Port and Star.....
303249	1	Cover - Inspection Hole - Flywheel.....
375039	1	Swivel Bracket and Screw Assembly.....
375079	2	Piston and Lockring Assembly.....
375192	1	Adjusting Rod and Knob Assembly.....
375254	1	Shroud, Carrying Handle and Strip Assembly.....
375267	1	Stern Bracket and Thrust Socket Assembly.....
375269	1	Gasoline Line - High Speed.....
375296	2	Terminal Assembly - Ignition Leads.....
375297	1	Steering Handle and Grip Assembly.....
375514	1	Filler Cap Assembly - Gas Tank.....
375542	1	Handle Assembly - Starter.....
375550	1	Cylinder Head Assembly.....
375564	1	Deflector Assembly.....
375567	1	Gasoline Tank and Filler Cap Assembly.....
375668	1	Connector and Filter Assembly.....
375688	1	Impeller and Insert Assembly.....
375689	1	Propeller and Bushing Assembly.....
375690	1	Gearcase Head and Bearing Assembly.....
375691	1	Bearing Housing and Bearing Assembly.....
375692	1	Gearcase - Lower - Plug Assembly.....
375693	1	Pinion Shaft and Clutch Pilot Assembly.....
375694	1	Spring and Sleeve Assembly - Shock Absorber.....
375697	1	Propeller Nut Assembly.....
375704	1	Control Shaft and Lever Assembly.....
375717	1	Tool Kit Assembly.....
375724	1	Propeller Shaft, Gear and Pinion Assembly.....
375737	1	Timing Lever Assembly.....
375738	1	Starter Housing.....
375744	2	Clampscrew Assembly with Plate and Retainer.....
375823	1	Control Rod Assembly - Cam Lever to Throttle Arm.....
375824	1	Manifold - Plate and Gasket Assembly.....
375825	1	Carburetor Body and Plug Assembly.....
375826	1	Carburetor Assembly Complete.....
375827	1	Cylinder and Crankcase Assembly.....
375828	1	Starter Assembly Complete.....
375838	1	Control Cable and Sleeve Assembly.....
375859	1	Control Cable and Sleeve Assembly (TNL).....
375939	1	Driveshaft and Collar Assembly.....
375941	1	Driveshaft and Collar Assembly (TNL).....
375943	1	Driveshaft Casing - Water Tube and Control Tube Assembly.....
375944	1	Driveshaft Casing - Water Tube and Control Tube Assembly TNL.....
376041	1	Crankshaft.....
510168	1	Cam - Magneto.....
510173	2	Condenser.....
510185	2	Eccentric Screw - Breaker Base Assembly.....
510188	1	Oiler Clip.....
510189	1	Oiler Wick.....
510190	1	Clamp - High Tension Leads.....
510191	2	Screw - Coil and Lamination Assembly - Armature Plate Mounting.....
510192	2	Screw - Armature Plate Mounting.....
510198	4	Screw - Condenser Mounting - Clamps.....
510194	2	Screw - Lead to Breaker.....
510195	4	Screw - Coil and Lamination Mounting.....
510202	1	H.T. Lead Only - Short.....
510203	1	H.T. Lead Only - Long.....
510204	2	Spring Clip - Breaker Spring.....
510208	2	Bow Washer - Breaker Base Mounting.....
510218	1	Clamp - High Tension Leads.....
510231	2	Spring Terminal - H.T. Leads.....
510232	2	Rubber Cover - Spark Plug and Leads.....

Order All Parts from Nearest Service Station or Dealer

Always Give Part Number and Motor Number

PART NO. 510233 TO 580148 INC.

Part No.	No. Required per Motor	NAME OF PART
510233	2	Insulating Sleeve - H.T. Lead.....
552029	1	Wave Washer - Armature Plate.....
580107	1	Flywheel Assembly
580118	2	Coil and Lamination Assembly.....
580120	1	Armature Plate Assembly.....
580121	1	Armature Plate and Post Assembly.....
580122	2	Breaker Base Assembly.....
580123	2	Breaker Arm Assembly.....
580134	1	High Tension Lead Assembly - Short.....
580135	1	High Tension Lead Assembly - Long.....
580148	2	Breaker Assembly Complete.....

Order All Parts from Nearest Service Station or Dealer