

# *Majestic*

## OUTBOARD MOTOR



### 15 H. P.

### MODEL M-6N-GS

### FORWARD-NEUTRAL-REVERSE

**OPERATING INSTRUCTIONS**  
**and REPLACEMENT PARTS**

# Majestic

## MODEL M-6N-GS

### SPECIFICATIONS

|  |   |
|--|---|
| Model  | M-6N-GS Feather-lite "15"                                   |
| Gearshift  | Forward - Neutral - Reverse                                 |
| Horsepower   | 15 H.P. O.B.C. certified                                    |
| Two Cylinder   | Bore 2 1/2"; Stroke 2 1/32"                                 |
| Piston Displacement  | 19.94 cu. in.   |
| Valves   | Dual rotary valve, 2 port                                   |
| Carburetor   | Carter concentric bowl type                                 |
| Ignition   | Phelon Waterproof Hot Spark Magneto                         |
| Starter  | Automatic Rewind  |
| Steering   | Automatic co-skipper  |
| Water Pump   | Positive Rotary   |
| Controls   | Twist Grip Controls   |
| Spark Plugs  | Champion J8J - 14 mm.                                       |
| Connecting Rods  | Forged steel with Torrington needle bearings                |
| Lubrication  | Pressure lubricated main, crankshaft and wrist pin bearings |
| Propeller  | 8x11, 3 blade   |
| Drive Gears  | Zerol cut for quiet operation                               |
| Gear reduction   | 14 to 24  |
| Gas Tank, Separate Cruising  | 6 gal. capacity   |
| Die-cast aluminum parts, Alrok treated to prevent salt water corrosion |   |
| Speed Range  | 0 to 30 miles per hour                                      |
| Weight   | 54 lbs.   |

### PLEASE NOTE!

We reserve the right to change motor specifications contained herein without notice. Any parts contained in your motor that are different from those listed in this parts book were changed either to improve your Motor or were necessary due to material substitutions.

# Outboard Motor Brands, Inc.

1325 N. E. Quincy

Minneapolis 13, Minnesota

# **INSTRUCTION MANUAL**

## **Read Before Operating Your Outboard Motor**

**For satisfying and trouble free service, let's get acquainted with your new Outboard Motor.**

### **OPERATING PROCEDURE**

Your new Outboard Motor is a two cycle engine and the lubrication of the Pistons, Cylinders, Connecting Rods and Crankshaft Bearings is supplied by oil mixed with gasoline. The proportions of this mixture and the grades of gasoline and oil used are very important.

We recommend the use of any high grade Outboard Motor Oil which will mix readily with gasoline. Mix oil with any regular grade of gasoline (72 Octane rating or better), using  $\frac{1}{2}$  pint of oil to one gallon of gasoline for normal operation after break-in period.

### **TO START COLD MOTOR**

For the first 5 hours of operation this motor should not be run faster than  $\frac{3}{4}$  throttle. We recommend the use of  $\frac{3}{4}$  pint of outboard motor oil to each gallon of gasoline during the break-in period.

1. Open Gas Cap Vent in the separate Cruising Tank.
2. Connect Gas Line Coupler by depressing knurled section, placing coupler in position on Gas Line Nipple on motor, and releasing.

3. Open high speed adjustment valve approximately  $1\frac{1}{2}$  turns when motor is cold.
4. Prime motor by repeated squeezing of primer section of Fuel Line until this section becomes firm. (Priming will vary with completely dry to semi-full system.)
5. Turn twist grip control to START position.
6. Shift Lever should be in the Forward or Neutral position. However, a cold motor may start better with controls set at medium Forward Throttle.
7. Pull out choke knob to choke. Pull Starter Handle until starter engages, then pull forcibly using a quick motion. Don't pull more than three or four times in choked position. Push knob in to release choke after motor starts.
8. Should motor slow down after starting, choke quickly once or twice and squeeze primer section to see that fuel line is full.
9. Re-starting may usually be done by just re-setting controls and pulling Automatic Rewind Starter a time or two.
10. Usually a motor that is still warm from running requires no more than one or two pulls of the starter cord. Try this before using choke.

## RUNNING

1. When motor is warm, set High Speed Adjustment Knob at best running position.
2. Throttle and spark are synchronized and regulated by twist grip control. Its range is indicated on the upper engine cover.
3. WARNING—Shift in indicated range only.

## AUTOMATIC REWIND STARTER

When starting motor pull starter cord knob straight out approximately 24 inches, using a quick motion. It is not advisable or necessary to pull the cable a greater distance.

Should Automatic Rewind Starter fail to operate, remove the starter housing by removing the three screws that hold housing to upper engine cover. This will give access to the emergency starter plate.

## PROPELLER SHEAR PIN

This soft "safety pin" shears when you strike an obstruction at full speed, thus protecting the gears, shafts and other mechanism of your motor from damage. When this happens shut your motor off immediately. To replace shear pin, set shift lever in reverse, remove the cotter pin in the propeller nut and remove nut. Slip off the propeller and replace the broken pin. Replace propeller, nut and cotter pin. The nut should be drawn up until the propeller fits snug against the shear pin.

## GEAR SHIFT INSTRUCTIONS

1. The Gear Shift Lever should be kept in neutral position when the motor is not in use.
2. When starting motor in neutral, twist grip control may be set so that indicator is in start position. However, before shifting, set twist grip control so that indicator is in shift range as noted on upper engine cover.
3. When shifting into reverse, slow motor down to Shift Range position to allow locking of the Reverse Lock. (If the motor should tilt up while shifting, slow motor down.)
4. In shifting from reverse into forward, turn twist grip control so that indicator is in shift range position, shift to forward and then turn twist grip control to desired speed.

## SPARK PLUG ADJUSTMENTS:

The spark plugs should be kept clean and the point gap set at .030 inch. If the points are too badly corroded or burned away from long use, the plug should be replaced.

## CARBURETOR ADJUSTMENTS

1. Close idle adjustment screw until it is snug (do not force needle against seat). Then open idle screw approximately  $\frac{3}{4}$  turn.
2. Turn high speed adjustment knob until Closed. Then open approximately  $1\frac{1}{2}$  turns.
3. After starting motor, turn twist grip control until indicator is in a position slightly beyond "Start." Turn the High Speed Adjustment Knob clockwise until the motor begins to slow down from lack of gas. Then re-open high speed adjustment until motor picks up speed and runs smoothly.
4. Move twist grip control to position marked "Slow on upper engine cover. The motor should now idle slowly. However, atmospheric changes and fuel mixtures may require opening or closing the idle adjustment screw slightly.

## MAGNETO ADJUSTMENTS:

Ordinarily these magnetos will operate over extremely long periods of time without the need for adjustment or repair. However if engine operating difficulties are experienced which appear to be caused by the ignition system, the magneto output can be checked to determine whether this unit is functioning properly.

Disengage the high - tension cable from each spark plug. Remove spark plugs. Hold the cable by its insulation in such a position that the metal terminal is about 3/16-inch from some grounded part of the engine. While holding the wire in this position, spin the engine over at normal cranking speed. If the magneto sparks this gap the trouble is not in the magneto. Now inspect the contact breakers. If the contact points are dirty they can be cleaned with a little clear gasoline. Make sure no particles of lint are left between the point surfaces if a brush or cloth is used. If the points are severely burned install a complete new contact breaker assembly. See that the contacts are properly adjusted. When fully open, there should be eighteen thousandths of an inch (.018") between the point surfaces. If there still is no spark the coil or condenser may be defective. Any service station with proper equipment can correct the situation.

## TILT PIN ADJUSTMENT FOR BEST PERFORMANCE

1. Best performance will be realized by having the propeller shaft on a horizontal plane with regard to the bottom of the boat. Set tilt pin so that anti-cavitation plate (large plate immediately above propeller) is on a horizontal plane approximately one inch below the bottom of the boat or keel. To tilt motor too far under will tend to push the bow down. To tilt too far out will tend to push the stern down, consequently eliminating top performance.

## SHIFT ROD ADJUSTMENTS

1. Move Gear Shift Lever to neutral position.
2. If propeller turns clockwise and counter-clockwise freely, no adjustment is required.
3. If propeller is engaged, loosen Control Rod Lock Nuts and set screw on Control Rod Adjustment Guide Nut. Turn Guide Nut clockwise or counter-clockwise until propeller is free.
4. Tighten Control Rod Lock Nuts and set screw to complete the adjustment. Maintain a minimum of 1/64 of an inch clearance.

5. Favor forward adjustment. Unit should shift into forward with minimum movement from neutral position.

## CO-SKIPPER ADJUSTMENT

Co-skipper adjustment is regulated by 3LGS58, Co-skipper Tension Adjustment Nut. Remove cotter pin 6LL1198, tighten nut to proper tension—replace cotter pin.

## SYNCHRONOUS CONTROL

### Magneto Control Adjustment

Turn twist grip control handle counter-clockwise to full throttle position. Stator plate should now be in full advance position. (The Stator Plate Control Pitman (56Q500) at bottom of Stator Plate Control Arm (3M511) groove). If not, loosen Control Shaft Arm Pivot Screw (6LL2213) and make proper adjustment. A small allowance should be made for slack in linkage.

# MAINTENANCE

## COOLING SYSTEM

1. Water for Cooling is provided by a "Positive Rotary Impeller" pump.
2. Always be sure engine is cooling properly by watching for the tell-tale stream of water from outlet on bottom of Cylinder Head.
3. Should water fail to discharge:
  - a. Stop engine immediately.
  - b. Check intake holes on front of Lower Unit Body (6MM990-1) and outlet on Cylinder Head for obstructions.

4. Use care if running motor in small test tank, re-using water continuously may cause overheating. Be sure water level is above intake openings.

## SALT WATER INSTRUCTIONS

You will extend the life and performance of your motor, if using in salt water, by flushing fresh water through the motor after use. This may be done by running the motor in a barrel of fresh water.

## INSTRUCTIONS FOR COLD WEATHER USE

1. Cold weather will not affect the running of your motor. However, to prevent freezing, when idle even for a few hours, drain water from motor by placing it in an upright position and pulling Starter Rope a few times.
2. For long period storage see section "Instructions for Storing Motor."

## INSTRUCTIONS FOR STORING MOTOR

1. Drain fuel system by running motor with Fuel Line Coupler disconnected from motor.
2. Drain water from motor by placing it in an upright position and pulling Starter Rope a few times.
3. Drain and refill Lower Unit (See section on "Lubrication.")
4. Remove Spark Plugs and pour about two ounces of oil in each cylinder.
5. Squirt similar amount into Carburetor Intake.
6. Turn motor over slowly several times. This will spread oil over all parts in the power head.
7. Important. With shift lever in forward position, turn motor over by turning the propeller in a clockwise direction. This will reverse the position of the water pump impeller blades so that they won't acquire a permanent set in one position.
8. Replace spark plugs.
9. Store upright in clean dry place. We suggest that the specially designed shipping carton be used.

## SPRING CHECK-UP SUGGESTIONS

1. Remove plugs and clean or replace.
2. Pull motor over several times with Starter Rope.
  - a. Wipe excess oil from around Spark Plug holes and replace Spark Plugs.
3. Wipe entire motor clean and inspect for parts broken or out of adjustment.
4. Put drop of light motor oil on all working parts and friction points.

## LUBRICATION

The most important factor in the operation of any internal combustion engine is proper lubrication. Properly lubricate your motor and you will enjoy many years of highly satisfactory service. Improper lubrication will cause unnecessary wear and expense.

When draining the lower unit, the Filler Plug and Vent Screw should be removed and the motor placed in a vertical position to allow the oil to drain out.

When filling the unit with new oil, the motor should be placed in a horizontal position and the unit filled with Champion lower unit oil to the level of the Filler Plug. An oil can, preferably the pump type, should be used for filling the unit. For extreme cold weather operation only GX-80 oil may be used.

## FUEL SYSTEM

1. This system includes gas lines, fuel pump, primer and coupling, and gas tank.
2. For better operating results:
  1. Thoroughly mix and strain fuel.
  2. Keep tank, lines and coupling clean.
  3. Watch for and correct leaks in fuel system.
    - a. Excessive air bubbles in 6MM421 Gas Line (other than during priming) indicate a leak in fuel system.
3. To drain pump and carburetor, remove Coupler (6MM480) and run engine until dry.

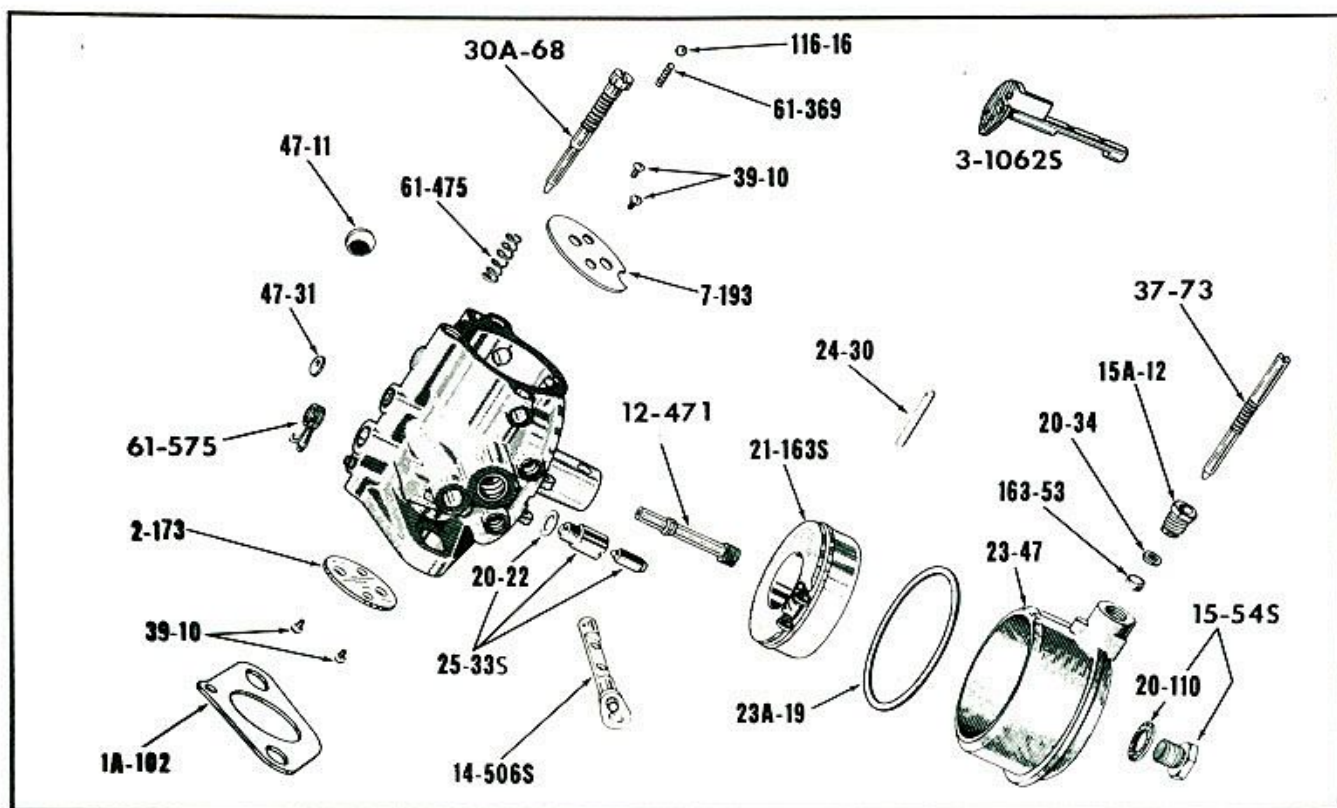
## WARNING!

Never raise lower unit above level of power head without first allowing water to drain from underwater exhaust housing. **Always store motor in an upright position.** Do not use so-called outboard motor gasoline or stove gas. Best results are obtained with regular gasoline.

## WARRANTY REPAIR

You have received with this motor a warranty covering workmanship and materials. We will not be responsible for work performed and labor time spent by other than the manufacturer, unless such repairs are first authorized by us in writing.

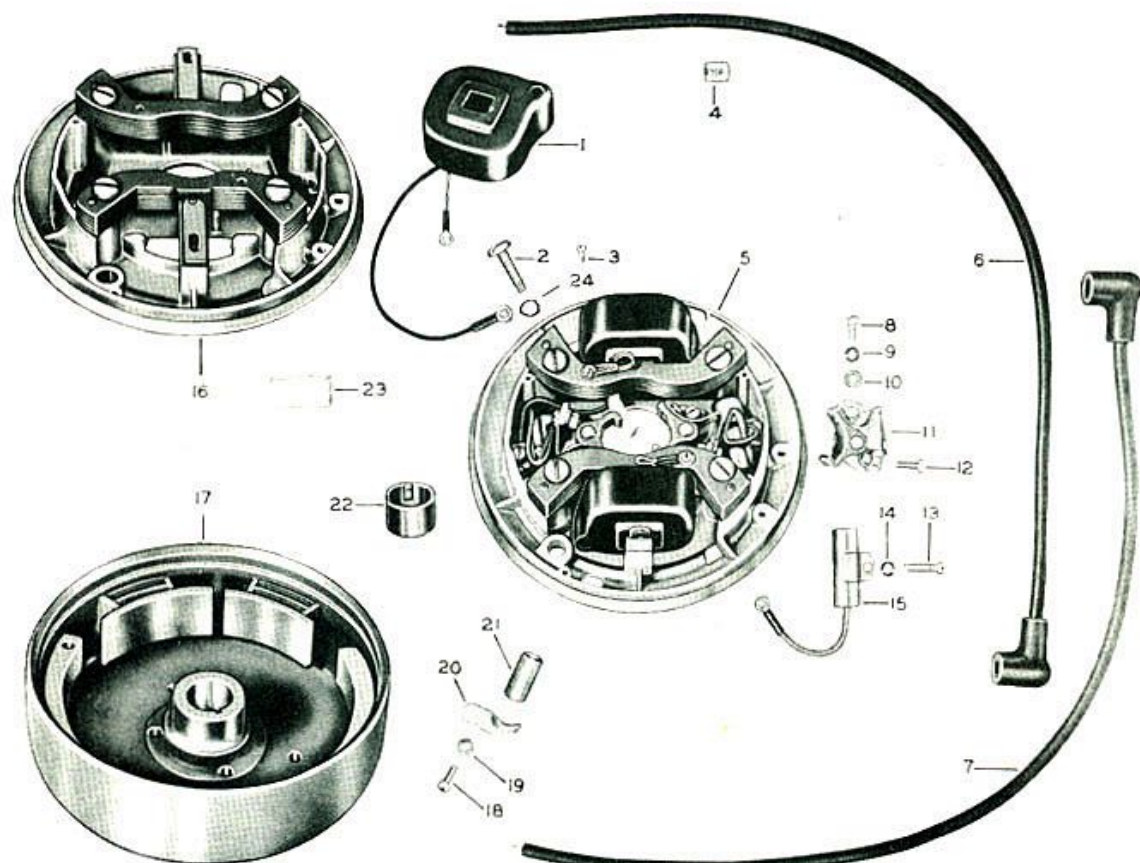
# CARTER CARBURETOR MODEL N 2440S



| Part No. | Part Name                         |
|----------|-----------------------------------|
| 1A-102   | Flange gasket                     |
| 2-173    | Throttle valve                    |
| 3-1062S  | Throttle shaft and lever assembly |
| 7-193    | Choke valve                       |
| 12-471   | Nozzle                            |
| 14-506S  | Choke lever and shaft assembly    |
| 15-54S   | Bowl nut assembly                 |
| 15A-12   | Packing nut                       |
| 20-22    | Needle seat gasket                |
| 20-34    | Packing nut gasket                |
| 20-110   | Bowl nut gasket                   |
| 21-163S  | Float and lever assembly          |
| 23-47    | Bowl                              |

| Part No. | Description                                  |
|----------|--|
| 23A-19   | Bowl ring gasket                             |
| 24-30    | Float lever pin                              |
| 25-33S   | Needle and seat assembly                     |
| 30A-68   | Idle adjustment screw                        |
| 37-73    | High speed adjusting needle                  |
| 39-10    | Choke and throttle valve attaching screw (4) |
| 47-11    | Idle port welsh plug                         |
| 47-31    | Idle passage welsh plug                      |
| 61-369   | Choke shaft spring                           |
| 61-475   | Idle adjustment screw spring                 |
| 61-575   | Throttle return spring                       |
| 116-16   | Choke spring ball                            |
| 163-53   | Main metering screw packing                  |

# PHELON MAGNETO SPECIFICATION NO. OF-514V

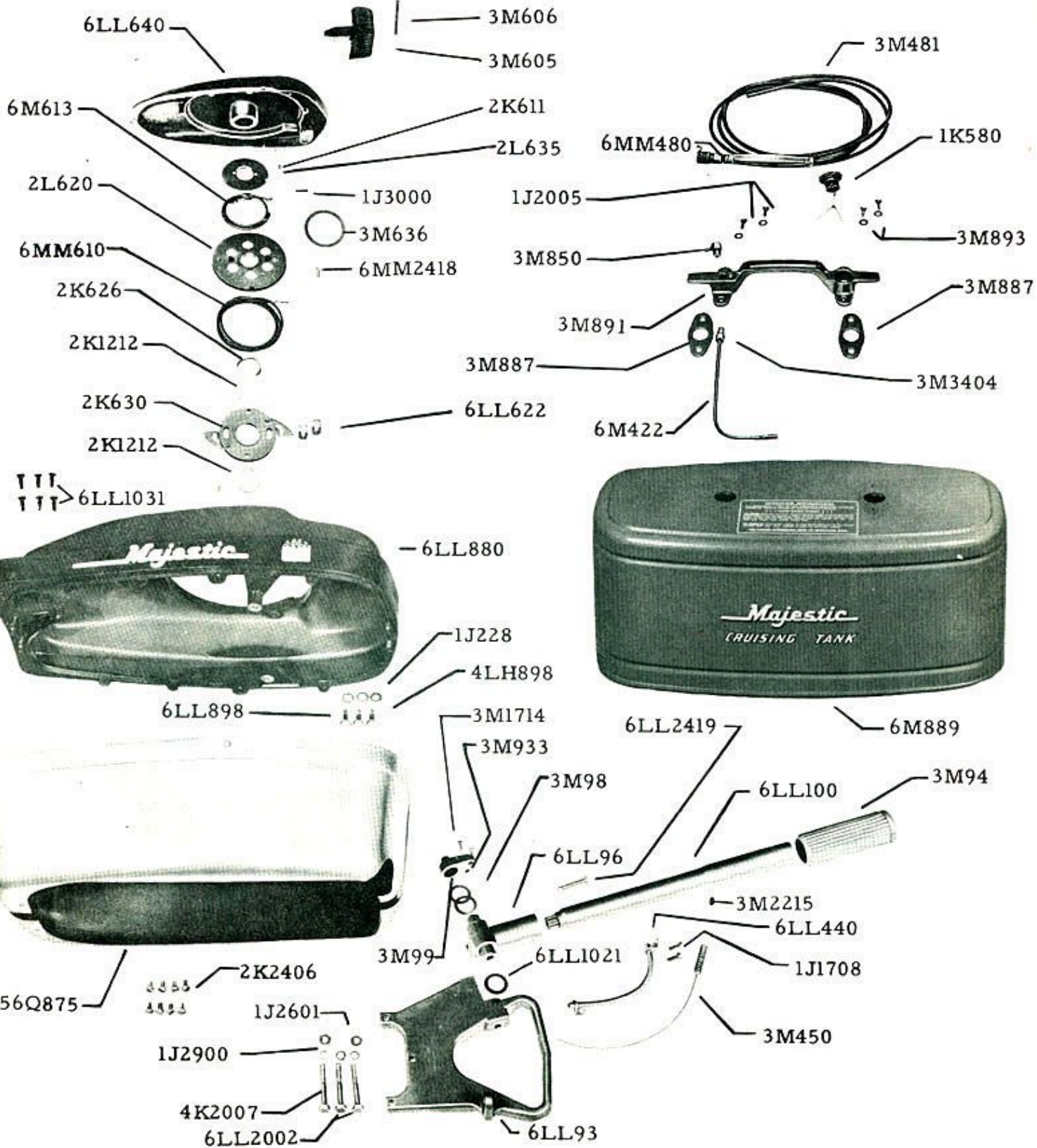


| Ref. No. | Part No.  | Description                      |
|----------|-----------|----------------------------------|
| 1        | F-1835    | Coil                             |
| 2        | F-2052    | Core Screw                       |
| 3        | F-422     | Ground Terminal Screw            |
| 4        | F-564     | Lead Wire Marker                 |
| 5        | FG-2086   | Stator Assembly Complete         |
| 6        | FG-2061-J | Lead Wire                        |
| 7        | FG-2061-P | Lead Wire                        |
| 8        | F-204     | Fixed Contact Screw              |
| 9        | F-147-C   | Fixed Contact Screw Lockwasher   |
| 10       | F-247     | Fixed Contact Screw Plain Washer |
| 11       | FG-626    | Breaker Assembly                 |
| 12       | F-601     | Breaker Connection Screw         |

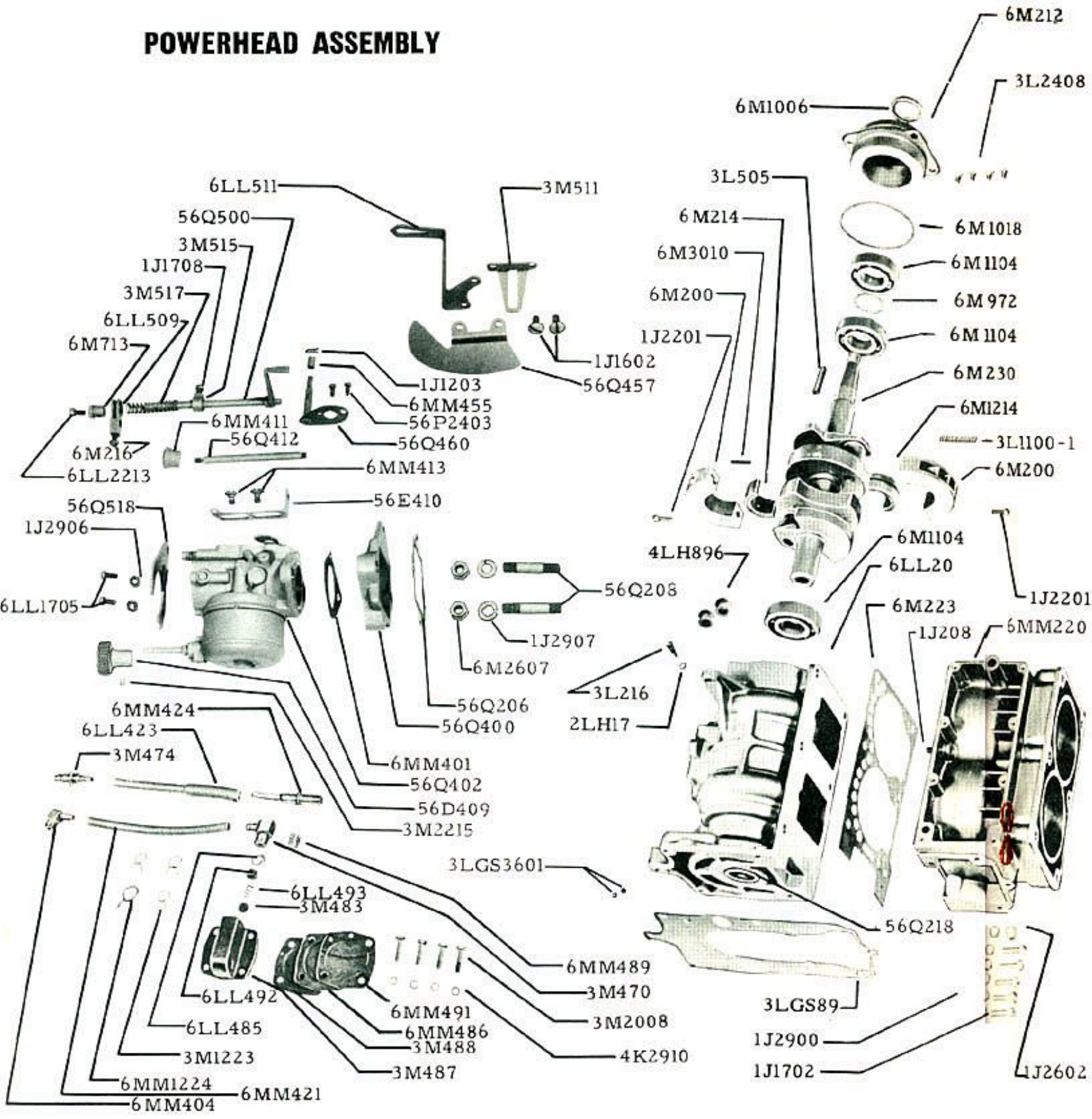
| Ref. No. | Part No.  | Part No. | Description                           |
|----------|-----------|----------|---------------------------------------|
| 13       | F-1356    |          | Condenser Screw                       |
| 14       | F-147-C   |          | Condenser Screw Lockwasher            |
| 15       | FG-1770   |          | Condenser Group                       |
| 16       | FG-1793-A |          | Stator & Core Assembly                |
| 17       | FG-2087   |          | Flywheel                              |
| 18       | F-132     |          | Lead Wire Tube Clamp Screw            |
| 19       | F-147-C   |          | Lead Wire Tube Clamp Screw Lockwasher |
| 20       | F-1775    |          | Lead Wire Tube Clamp                  |
| 21       | F-603     |          | Lead Wire Tube                        |
| 22       | F-539-E   |          | Breaker Cam                           |
| 23       | F-906     |          | Cam Wiper Felt                        |
| 24       | F-600     |          | Core Screw Lockwasher                 |

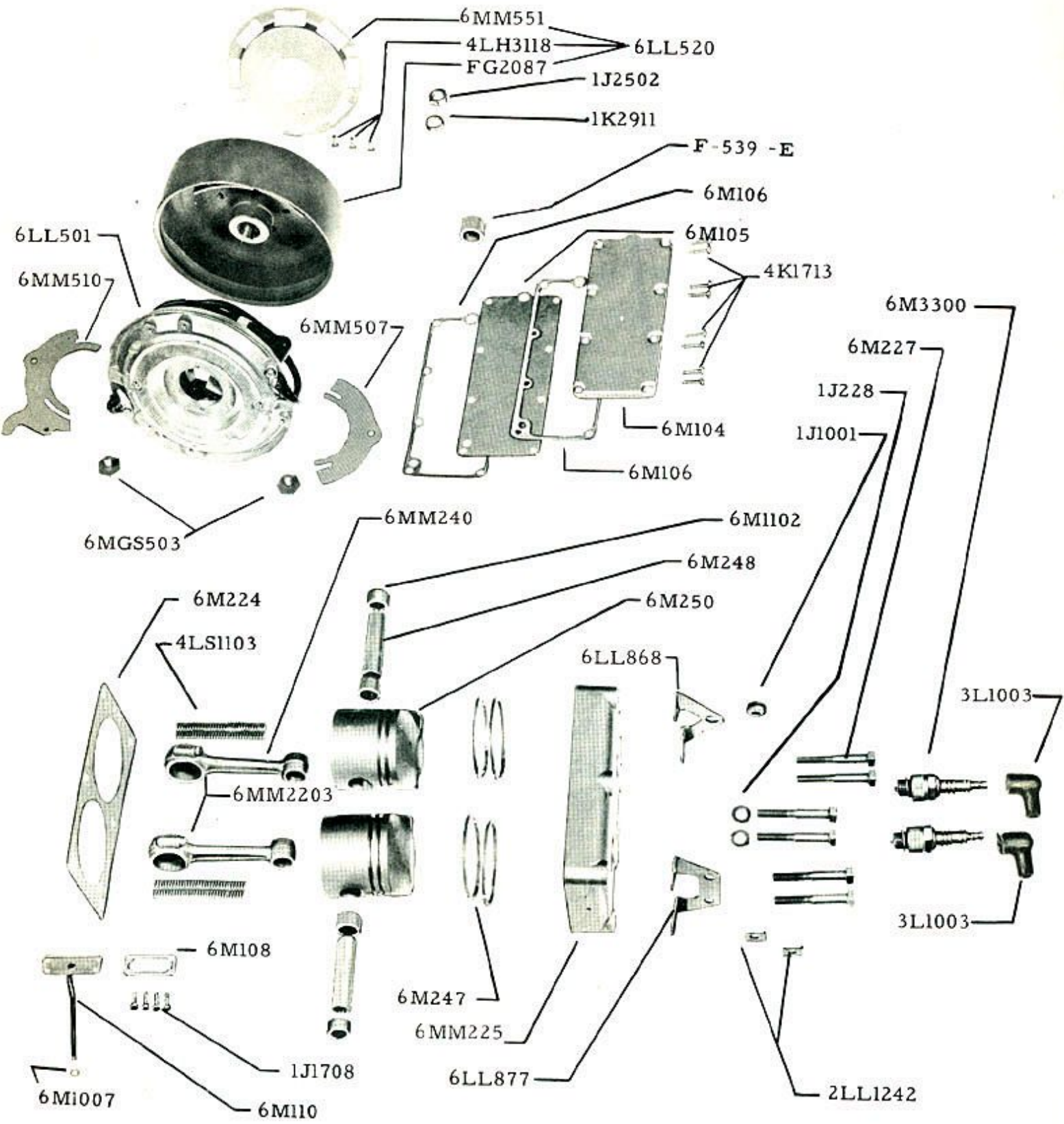


# STARTER HOUSING AND ENGINE COVER, GAS TANK ASSEMBLIES

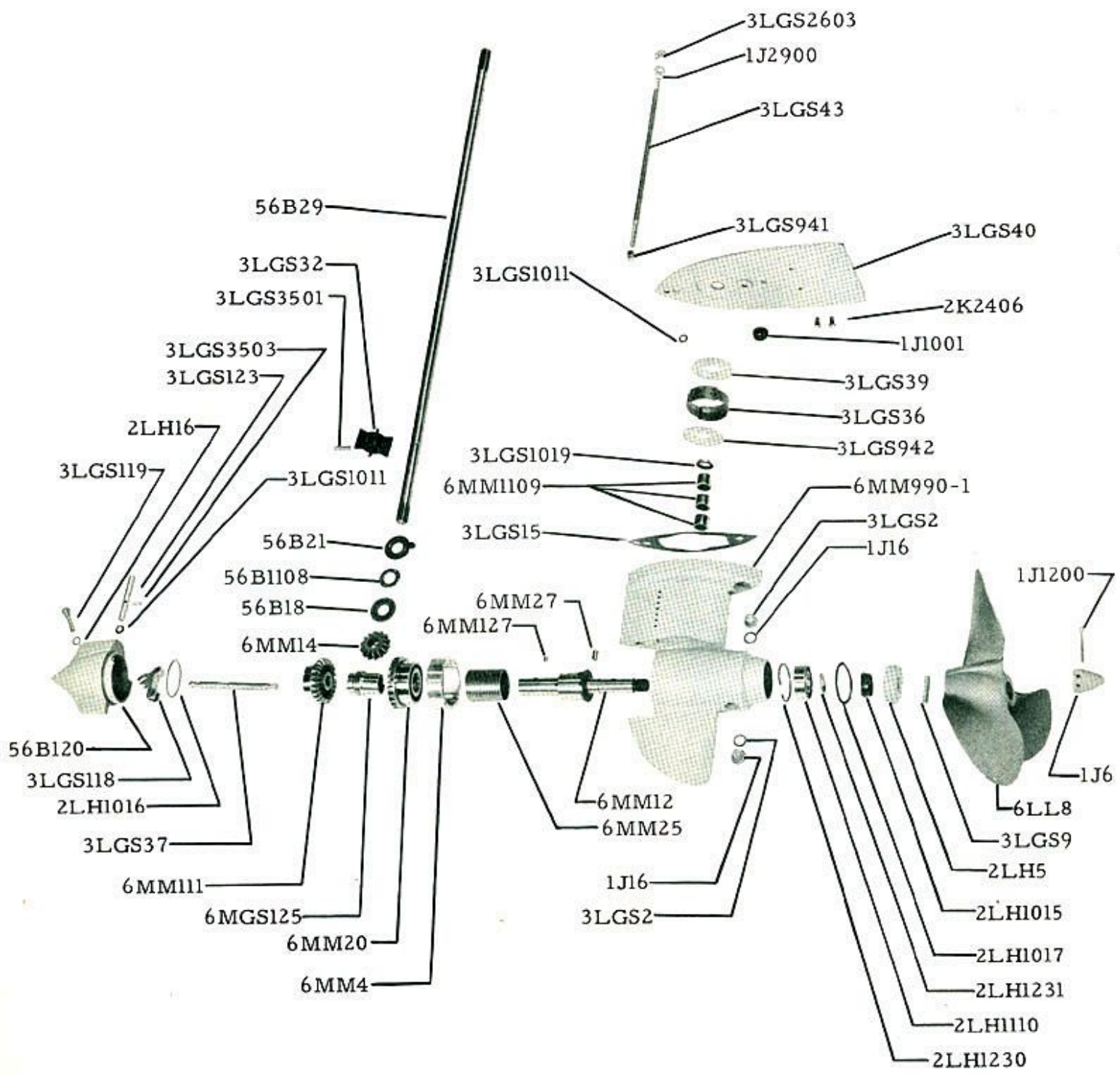


# POWERHEAD ASSEMBLY

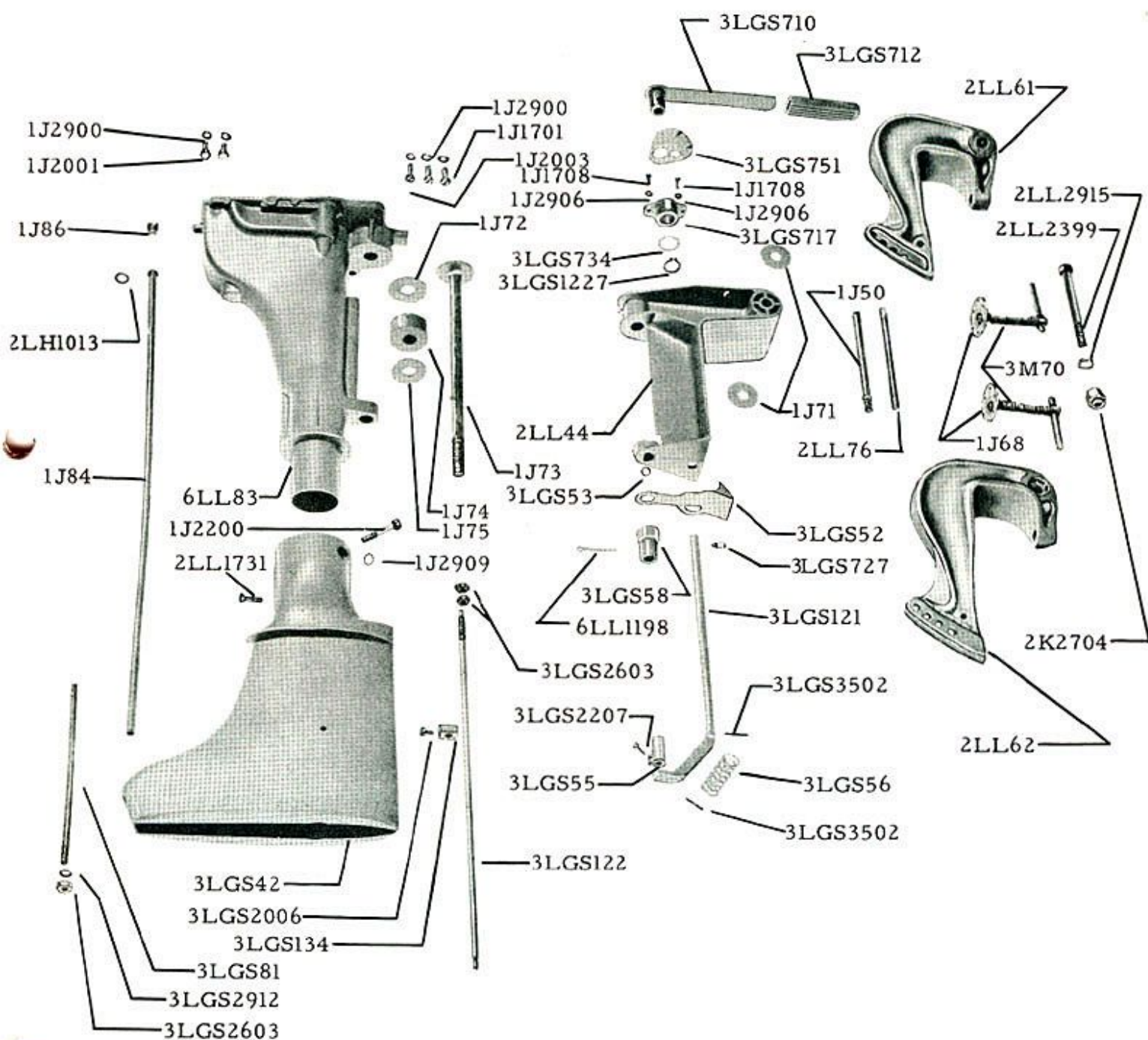




# LOWER UNIT ASSEMBLY



## PIVOT BASE AND BOAT BRACKET ASSEMBLIES



# PARTS LIST

| Part No. | Part Name                      | No. Req'd | Part No. | Part Name                          | No. Req'd |
|----------|--------------------------------|-----------|----------|------------------------------------|-----------|
| 3LGS2    | Lower Unit Filler & Drain Plug | 2         | 3M94     | Steering Handle Grip               | 1         |
| 6MM4     | Drive Gear Bearing             | 1         | 6LL96    | Steering Handle Pivot              | 1         |
| 2LH5     | Ball Bearing Lock Ring         | 1         | 3M98     | Steering Handle Friction Washer    | 2         |
| 1J6      | Propeller Nut                  | 1         | 3M99     | Steering Handle Support Cap        | 1         |
| 6LL8     | Propeller                      | 1         | 6LL100   | Steering Handle Assembly           | 1         |
| 2LH9     | Shear Pin                      | 1         | 6M104    | Exhaust Manifold                   | 1         |
| 6MM12    | Propeller Shaft                | 1         | 6M105    | Exhaust Manifold Plate             | 1         |
| 6MM14    | Pinion Gear                    | 1         | 6M106    | Exhaust Manifold Gasket            | 2         |
| 3LGS15   | Lower Unit Gasket              | 1         | 6M108    | Water Passage Cover Plate Gasket   | 1         |
| 1J16     | Grease Plug Gasket             | 2         | 6M110    | Water Passage Cover Plate Assembly | 1         |
| 2LH16    | Rocker Arm Hinge Pin Gasket    | 1         | 6MM111   | Reverse Gear                       | 1         |
| 2LH17    | Gasket (Lock Screw)            | 1         | 3LGS118  | Rocker Arm                         | 1         |
| 56B18    | Thrust Washer, Lower           | 1         | 3LGS119  | Rocker Arm Hinge Pin               | 1         |
| 6MM20    | Drive Gear Assembly            | 1         | 56B120   | Lower Unit Cap Assembly            | 1         |
| 56B21    | Thrust Washer, Upper           | 1         | 3LGS121  | Upper Shift Rod                    | 1         |
| 6MM25    | Drive Spring                   | 1         | 3LGS122  | Lower Shift Rod                    | 1         |
| 6MM27    | Drive Spring Friction Pin      | 1         | 3LGS123  | Rocker Arm Guide                   | 1         |
| 56B29    | Driveshaft                     | 1         | 6MGS125  | Reverse Spring                     | 1         |
| 3LGS32   | Water Pump Rotor               | 1         |          |                                    |           |
| 3LGS36   | Water Pump Housing             | 1         |          |                                    |           |
| 3LGS37   | Lower Unit Control Rod         | 1         |          |                                    |           |
| 3LGS39   | Water Pump End Plate (Top)     | 1         |          |                                    |           |

## BE SURE TO GIVE MODEL AND SERIAL NUMBER OF MOTOR WHEN ORDERING PARTS

|        |  |   |         |                                 |   |
|--------|--|---|---------|---------------------------------|---|
| 3LGS40 | Anti-Cavitation Plate Assembly                 | 1 | 6MM127  | Reverse Spring Friction Pin     | 1 |
| 3LGS42 | Driveshaft Housing                             | 1 | 3LGS134 | Lower Shift Rod Lock            | 1 |
| 3LGS43 | Lower Unit and Driveshaft Housing Stud (Front) | 1 | 6M200   | Center Main Bearing Assembly    | 1 |
| 2LL44  | Motor Tilting Bracket                          | 1 | 56Q206  | Carburetor Adaptor Plate Gasket | 1 |
| 1J50   | Boat Bracket Tilting Pin Ass'y                 | 1 | 1J208   | Cylinder Block Stud             | 1 |
| 3LGS52 | Reverse Lock Catch                             | 1 | 56Q208  | Carburetor Stud                 | 2 |
| 3LGS53 | Reverse Lock Catch Washer                      | 1 | 6LL209  | Crankcase                       | 1 |
| 3LGS55 | Control Rod Adjustment Nut and Guide           | 1 | 6M212   | Magneto Mounting                | 1 |
| 3LGS56 | Reverse Lock Catch Spring                      | 1 | 6M214   | Center Main Bearing Race        | 1 |
| 3LGS58 | Co-Pilot Tension Adj. Nut                      | 1 | 3L216   | Screw, Center Main Bearing Lock | 1 |
| 2LL61  | Boat Bracket, R.H.                             | 1 | 6M216   | Screw, Stator Shaft Arm         | 1 |
| 2LL62  | Boat Bracket, L.H.                             | 1 | 56Q218  | Bottom Main Bearing Seal        | 1 |
| 1J68   | Boat Bracket Clamp Screw Pad                   | 2 | 6MM220  | Cylinder Block Assembly         | 1 |
| 3M70   | Boat Bracket Clamp Screw Assembly              | 2 | 6M223   | Cylinder Base Gasket            | 1 |
| 1J71   | Tilting Bracket Friction Washer                | 2 | 6M224   | Head Gasket                     | 1 |
| 1J72   | Pivot Bolt Friction Washer                     | 1 | 6MM225  | Cylinder Head                   | 1 |
| 1J73   | Pivot Bolt                                     | 1 | 6M227   | Screw, Cylinder Head            | 6 |
| 1J74   | Co-Pilot Cushion                               | 1 | 1J228   | Washer, Shoulder Screw          | 3 |
| 1J75   | Pivot Base Washer                              | 1 |         | Washer, Cylinder Head           | 2 |
| 2LL76  | Boat Bracket Spacer Pin                        | 1 | 6M230   | Crankshaft                      | 1 |
| 3LGS81 | Lower Unit and Driveshaft Housing Stud (Rear)  | 1 | 6MM240  | Connecting Rod                  | 2 |
| 6LL83  | Motor Pivot Base and Tube                      | 1 | 6M247   | Piston Ring                     | 4 |
| 1J84   | Intake Water Line                              | 1 | 6M248   | Wrist Pin                       | 2 |
| 1J86   | Water Line Fitting                             | 1 | 6M250   | Piston                          | 2 |
| 3LGS89 | Motor Base Gasket                              | 1 | 56Q400  | Carburetor Adaptor Plate Assy.  | 1 |
| 6LL93  | Carrying Handle                                | 1 | 6MM401  | Carburetor Gasket               | 1 |
|        |  |   | 56Q402  | Carburetor                      | 1 |
|        |  |   | 6MM404  | Carburetor Inlet Elbow          | 1 |

| Part No. | Part Name                              | No. Req'd | Part No. | Part Name               | No. Req'd |
|----------|--|-----------|----------|-------------------------|-----------|
| 56D409   | High Speed Adjustment Knob             | 1         | 2K626    | Spring Washer           | 1         |
| 56E410   | Choke Slide Assembly                   | 1         | 2K630    | Ratchet Assembly        | 1         |
| 6MM411   | Choke Knob                             | 1         | 2L635    | Spring Cover            | 1         |
| 56Q412   | Choke Rod                              | 1         | 3M636    | Starter Spool Shim      | As Req'd  |
| 6MM413   | Shoulder Screw, Choke Slide            | 2         | 6LL640   | Starter Housing         | 1         |
| 6MM421   | Gas Line, Long                         | 1         | 3LGS710  | Shift Lever Assembly    | 1         |
| 6M422    | Gas Tank Outlet and Screen             | 1         | 3LGS712  | Shift Lever Handle      | 1         |
| 6LL423   | Gas Line, Fuel Pump Inlet              | 1         | 6M713    | Control Shaft Arm Pivot | 1         |
| 6MM424   | Fuel Pump Inlet and Screen             | 1         | 3LGS717  | Shift Bracket           | 1         |
| 6LL440   | Control Guide Assembly                 | 1         | 3LGS727  | Shift Lever Pin         | 1         |
| 3M450    | Steering Handle Rack and Wire Assembly | 1         | 3LGS734  | Shift Lever Cam Washer  | 1         |
| 6MM455   | Synchronous Control Arm Roller         | 1         | 3LGS751  | Shift Lever Catch       | 1         |
| 56Q457   | Synchronous Control Cam                | 1         | 3M850    | Gas Tank Fuel Outlet    | 1         |
| 56Q460   | Synchronous Control Arm                | 1         | 6LL868   | Shroud Bracket, Upper   | 1         |
| 3M470    | Fuel Pump Outlet                       | 1         | 56Q875   | Lower Shroud            | 1         |
| 3M474    | Gas Line Nipple                        | 1         | 6LL877   | Shroud Support - Lower  | 1         |
| 6MM480   | Auxiliary Primer Assembly              | 1         | 6LL880   | Upper Engine Cover      | 1         |
| 3M481    | Auxiliary Gas Line                     | 1         | 3M887    | Gas Tank Handle Gasket  | 2         |
| 3M483    | Valve, Fuel Pump                       | 1         | 6M889    | Gas Tank                | 1         |
| 6LL485   | Fuel Pump Lock Ring                    | 1         | 3M891    | Gas Tank Handle         | 1         |
| 6MM486   | Fuel Pump Mounting Plate               | 1         | 3M892    | Gas Tank Relief Spring  | 1         |
|          |  |           | 3M893    | Washer, Gas Tank Handle | 4         |

### BE SURE TO GIVE MODEL AND SERIAL NUMBER OF MOTOR WHEN ORDERING PARTS

|         |                                   |   |          |                                      |     |
|---------|-----------------------------------|---|----------|--------------------------------------|-----|
| 3M487   | Fuel Pump Body                    | 1 | 4LH896   | Grommet, Shroud Mounting Ring        | 2   |
| 3M488   | Fuel Pump Diaphragm               | 1 | 4LH898   | Shoulder Screw, Shroud Mounting Ring | 2   |
| 6MM489  | Diaphragm Actuating Spring        | 1 | 6LL898   | Shoulder Screw, Shroud Mounting Ring | 1   |
| 6MM491  | Fuel Pump Gasket                  | 1 | 3M933    | Steering Handle Spring Washer        | 1   |
| 6LL492  | Fuel Pump Spring Guide            | 1 | 3LGS941  | Anti-Cavitation Plate Nut            | 1   |
| 6LL493  | Fuel Pump Spring                  | 1 | 3LGS942  | Water Pump End Plate (Bottom)        | 1   |
| 56Q500  | Control Pitman Assembly           | 1 | 6M972    | Spacer, Top Main Bearing             | 1   |
| 6LL501  | Magneto                           | 1 | 1J1001   | Grommet, Choke Rod                   | 1   |
| 6MGS503 | Magneto Clamp Screw               | 2 |          | Grommet, Shroud Mounting             | 1   |
| 3L505   | Flywheel Key                      | 1 |          | Grommet, Water Line                  | 1   |
| 6MM507  | Magneto Clamp, Right Side         | 1 | 3L1003   | Spark Plug Connector                 | 2   |
| 6LL509  | Stator Shaft Arm                  | 1 | 6M1006   | Top Main Bearing Seal                | 1   |
| 6MM510  | Magneto Clamp Assembly            | 1 | 6M1007   | Water Passage Tube "O" Ring          | 1   |
| 3M511   | Stator Plate Control Arm          | 1 | 3LGS1011 | Anti-Cavitation Plate "O" Ring       | 1   |
| 6LL511  | Stator Plate Indicator            | 1 |          | Rocker Arm Guide "O" Ring            | 1   |
| 3M515   | Control Shaft Collar              | 1 | 2LH1013  | Water Line "O" Ring                  | 1   |
| 3M517   | Stator Plate Control Shaft Spring | 1 | 2LH1015  | Propeller Shaft Seal                 | 1   |
| 56Q518  | Control Shaft Bracket             | 1 | 2LH1016  | Lower Unit Cap Seal                  | 1   |
| 6LL520  | Flywheel Assembly                 | 1 | 2LH1017  | Ball Bearing Lock Ring Seal          | 1   |
| 6MM551  | Starter Plate                     | 1 | 6M1018   | Bearing Adaptor "O" Ring             | 1   |
| 1J574   | Washer, Gas Cap Vent Screw        | 1 | 3LGS1019 | Driveshaft Seal                      | 1   |
| 1J579   | Gasket, Gas Cap                   | 1 | 6LL1021  | "O" Ring Steering Handle             | 1   |
| 1K580   | Gas Tank Cap Assembly             | 1 | 6LL1031  | Bumper, Shroud                       | 6   |
| 3M605   | Ready Pull Handle                 | 1 | 3L1100-1 | Center Main Needle Bearing           | 36  |
| 3M606   | Handle Cable Lock                 | 1 | 6M1102   | Wrist Pin Bearing                    | 4   |
| 6MM610  | Starter Cable Assembly            | 1 | 4LS1103  | Connecting Rod Needle Bearing        | 128 |
| 2K611   | Starter Spring Anchor Screw       | 1 |          |                                      |     |
| 6M613   | Starter Recoil Spring             | 1 |          |                                      |     |
| 2L620   | Starter Spool Assembly            | 1 |          |                                      |     |
| 6LL622  | Starter Ratchet Spring            | 2 |          |                                      |     |

| Part No. | Part Name   | No. Req'd | Part No. | Part Name                                    | No. Req'd |
|----------|---|-----------|----------|--|-----------|
| 6M1104   | Main Bearing  | 3         | 2K2406   | Screw, Lower Shroud                          | 8         |
| 56B1108  | Pinion Gear Thrust Bearing                                  | 1         |          | Screw, Starter Housing                       | 3         |
| 6MM1109  | Driveshaft Bearing  | 3         |          | Screw, Cavitation Plate                      | 2         |
| 2LH1110  | Propeller Shaft Ball Bearing                                | 1         | 3L2408   | Magneto Mounting Screw                       | 4         |
| 6LL1198  | Co-Pilot Nut, Cotter Pin                                    | 1         | 2LH2414  | Magneto Clamp Screw                          | 1         |
| 1J1200   | Propeller Nut Cotter Pin                                    | 1         | 6MM2418  | Starter Cable Anchor Screw                   | 1         |
| 1J1203   | Synchronous Control Arm<br>Spring Cotter                    | 1         | 6LL2419  | Screw, Steering Handle                       | 1         |
| 2K1212   | Starter Spool Lock Ring                                     | 2         | 1J2502   | Flywheel Nut                                 | 1         |
| 3M1223   | Clamp, Gas Line   | 4         | 1J2601   | Pivot Base and Carrying<br>Handle Nut        | 2         |
| 6MM1224  | Clamp, Gas Line   | 1         | 1J2602   | Crankcase and Cylinder Block<br>Nut          | 1         |
| 3LGS1227 | Shift Lever Cam Snap Ring                                   | 1         | 3LGS2603 | Lower Unit and Driveshaft<br>Housing Nut     | 2         |
| 2LH1230  | Lower Unit Ball Bearing Snap<br>Ring                        | 1         |          | Lower Shift Rod Adjustment<br>Nut            | 2         |
| 2LH1231  | Propeller Shaft Snap Ring                                   | 1         | 6M2607   | Carburetor Nut                               | 2         |
| 2LL1242  | Shroud Clip, Rear   | 2         | 2K2704   | Tilting Bracket Bolt Nut                     | 1         |
| 1J1602   | Stator Plate Control Screw                                  | 2         | 1J2900   | Lock Washer, Pivot Base Screw                | 3         |
| 1J1701   | Pivot Base Screw, Rear                                      | 1         |          | Lock Washer, Cylinder Block<br>and Crankcase | 3         |
| 1J1702   | Pivot Base Screw<br>Cylinder Block and Crank-<br>case Screw | 3         |          | Lock Washer, Lower Unit and                  |           |
| 1J1703   | Cylinder Block and Crankcase<br>Screw - Long                | 2         |          |  |           |

**BE SURE TO GIVE MODEL AND SERIAL NUMBER OF MOTOR WHEN ORDERING PARTS**

|          |  |   |          |   |   |
|----------|--|---|----------|---|---|
| 6LL1705  | Screw, Control Shaft Bracket               | 2 |          | Driveshaft Housing Stud                             | 1 |
| 1J1708   | Screw, Shift Bracket                       | 2 |          | Lock Washer, Pivot Base and<br>Carrying Handle Bolt | 3 |
|          | Screw, Control Shaft Collar                | 1 |          | Lock Washer, Motor Base<br>Screw                    | 2 |
|          | Screw, Control Guide                       | 2 | 1J2906   | Lock Washer, Control Guide                          | 2 |
|          | Screw, Water Passage Cover<br>Plate        | 4 |          | Lock Washer, Control Shaft<br>Bracket               | 2 |
| 4K1713   | Exhaust Manifold Screw                     | 8 |          | Shift Bracket Screw Lock<br>Washer                  | 2 |
| 3M1714   | Screw, Steering Handle Cap                 | 2 | 1J2907   | Carburetor Nut Lock Washer                          | 2 |
| 2LL1731  | Lock Screw, Driveshaft Housing             | 1 | 1J2909   | Driveshaft Housing Clamp<br>Screw Lock Washer       | 1 |
| 6LL2002  | Screw, Carrying Handle<br>(Short)          | 1 | 4K2910   | Lock Washer, Fuel Pump Screw                        | 4 |
| 1J2001   | Motor Base Screw                           | 2 |          | Lock Washer, Steering Handle<br>Cap                 | 2 |
| 1J2005   | Screw, Gas Tank Handle                     | 4 | 1K2911   | Flywheel Nut Lock Washer                            | 1 |
| 3LGS2006 | Screw, Lower Shift Rod Lock                | 1 | 3LGS2912 | Lower Unit Body Stud Lock<br>Washer                 | 1 |
| 4K2007   | Carrying Handle Bolt                       | 2 | 2LL2915  | Washer, Tilting Bracket Bolt                        | 1 |
| 3M2008   | Screw, Fuel Pump                           | 4 | 1J3000   | Starter Spring Dowel Pin                            | 1 |
| 1J2200   | Driveshaft Housing Clamp<br>Screw          | 1 | 6M3010   | Center Main Bearing Dowel                           | 1 |
| 1J2201   | Screw, Center Main Bearing                 | 2 | 4LH3118  | Starter Plate Rivet                                 | 3 |
| 6MM2203  | Screw, Connecting Rod                      | 2 | 6M3300   | Spark Plug  | 2 |
| 3LGS2207 | Control Rod Adjustment Nut<br>Screw        | 1 | 3M3404   | Connector, Gas Tank                                 | 1 |
| 6LL2213  | Screw, Control Shaft Arm Pivot             | 1 | 3LGS3501 | Water Pump Rotor Pin                                | 1 |
| 3M2215   | Set Screw, High Speed Adjust-<br>ment Knob | 1 | 3LGS3502 | Reverse Lock Pin                                    | 2 |
|          | Set Screw, Steering Handle<br>Screw        | 1 | 3LGS3503 | Rocker Arm Guide Pin                                | 1 |
| 2LL2399  | Tilting Bracket Friction Bolt              | 1 | 3LGS3601 | Crankcase Plug                                      | 2 |
| 56P2403  | Synchronous Control Arm<br>Screw           | 2 |          |   |   |



## DECALS

|     |  |   |     |  |   |
|-----|--|---|-----|--|---|
| 210 | "Majestic" Side Decal.....                     | 2 | 223 | "Majestic" Cruising Tank Decal             | 2 |
| 211 | "Majestic" Side Decal.....                     | 2 | 225 | Forward - Neutral - Reverse<br>Decal ..... | 1 |
| 215 | "Majestic" Front Emblem 15<br>H.P. Decal ..... | 1 | 227 | Choke Decal (Pull).....                    | 1 |
| 222 | Instruction Decal - Tank .....                 | 1 | 230 | Tilting Decal .....                        | 1 |
|     |  |   | 231 | Manufacturer's Decal .....                 | 1 |
|     |  |   | 250 | Shift Range Decal .....                    | 1 |

## ASSEMBLIES

**BE SURE TO GIVE MODEL AND SERIAL NUMBER OF MOTOR WHEN ORDERING PARTS**

| Part No. | Part Name  | No. Req'd | Part No.  | Part Name   | No. Req'd |
|----------|--|-----------|-----------|---|-----------|
| 6MM890   | Complete Gas Tank Assembly<br>(Includes 6M422, 6MM480,<br>3M481, 3M483, 1K580, 3M850,<br>3MM887 (2), 6M889, 3M891,<br>3M892, 3M893 (4), 3M1223,<br>1J2005 (4), 3M3205, 3M3404)   | 1         | 6MM990-18 | Connecting Rod and Piston As-<br>sembly (Includes 6MM240,<br>6M247 (2), 6M248, 6M250,<br>6M1102 (2), 4LS1103 (64))  | 2         |
| 6MM990-1 | Lower Unit Body Sub-Assembly<br>(Includes 6MM1, 6MM4,<br>3LGS36, 3LGS942, 3LGS1019,<br>6MM1109 (3))  | 1         | 56Q990-28 | Complete Set of Gaskets<br>(Includes 3LGS15, 1J16 (2),<br>2LH16, 2LH17, 3LGS89, 6M106<br>(2), 6M108, 56Q206, 6M223,<br>6M224, 6MM401, 6MM491,<br>1J574, 1J579, 3M887 (2),<br>3LGS1011 (2), 2LH1015,<br>2LH1016, 2LH1017, 6M1018,<br>3LGS1019) | 1         |
| 56B990-6 | Lower Unit Assembly<br>(Includes 3LGS2 (2), 2LH5,<br>6MM12, 6MM14, 3LGS15, 1J16<br>(2), 2LH16, 56B18, 6MM20,<br>56B21, 6MM25, 6MM27, 56B29,<br>3LGS32, 3LGS37, 3LGS40,<br>3LGS43, 6MM111, 3LGS118,<br>3LGS119, 56B120, 3LGS122,<br>3LGS123, 6MGS125, 6MM127,<br>3LGS134, 3LGS941, 3LGS1011,<br>2LH1015, 2LH1016, 2LH1017,<br>56B1108, 2LH1110, 2LH1230,<br>2LH1231, 3LGS2006, 3LGS3501,<br>3LGS3503, 6MM990-1) | 1         | 6LL990-31 | Starter Housing Assembly<br>(Includes 3M605, 3M606,<br>6MM610, 2K611, 6M613, 2L620,<br>6LL622 (2), 2K626, 2K630,<br>2L635, 3M636 (as req'd),<br>6LL640, 2K1212 (2), 6MM2418,<br>1J3000)   | 1         |

**Your Majestic dealer is always ready and anxious to be of service. See him should there be some questions about your motor which you do not understand.**

# Ten Golden Rules of Outboard Boating

- 1** Respect the rules and regulations of waterway travel. Accidents can be eliminated if everyone possesses a thorough knowledge of outboard boating rules and ethics and then lives up to them.
- 2** Never cause undue disturbance by running your motor with open exhaust. Be considerate of those who may be seeking the peace and quietness they had hoped their lake place would give them.
- 3** Assist your fellow outboard enthusiasts should they be in trouble and need help. Perhaps your knowledge of boat and motor operation will help him to solve his problem and likewise add to his hours of pleasure.
- 4** Avoid running too close to boats containing fishermen so as not to spoil their favorite phase of outdoor recreation. This is one of the many rules of good sportsmanship.
- 5** Never overload your boat. Make sure that it is of proper size, construction and in good condition then carry only the number of passengers it can transport safely. When renting a boat, inspect it carefully and follow the above suggestions.
- 6** Avoid stormy weather. If you are caught out in a heavy storm, proceed at moderate speed, seat all passengers on the floor, head into the wind at a slight angle and remain calm.
- 7** Give the right-of-way to larger craft. Your small outboard is more easily maneuvered than larger boats. Practice good seamanship; give all boats a wide berth when passing.
- 8** It is good sportsmanship to give the swimmer a fair break. Never run your boat near a swimming beach. Should it be necessary to do so, slow down and observe the rules of good seamanship.
- 9** Don't stand up. Standing up in any small boat can be dangerous. Sit down! It's safer.
- 10** Always wipe surplus gasoline and oil that may accumulate on the stern seat of your boat. While the fire hazard is very remote, it is well to practice precaution at all times.

Practice good sportsmanship and regard for others when traveling the waterways. Outboard boating is a pleasant, healthful form of recreation. Help others enjoy it!

*Outboard Boating Club of America*

## Outboard Motor Brands, Inc.

1325 N. E. Quincy

Minneapolis 13, Minnesota